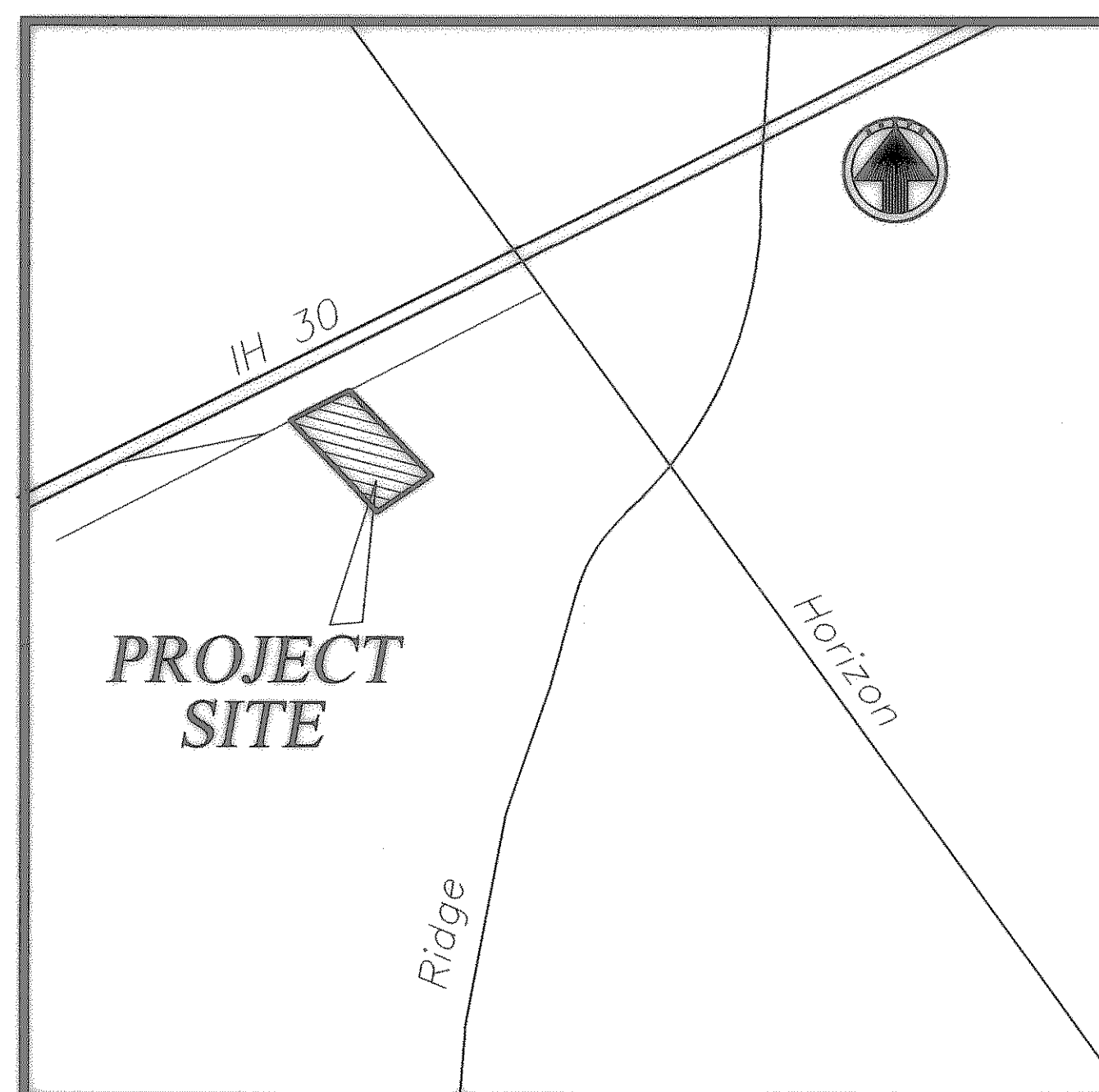


CONSTRUCTION PLANS

CULPEPPER'S PARKING

CITY OF ROCKWALL, TEXAS

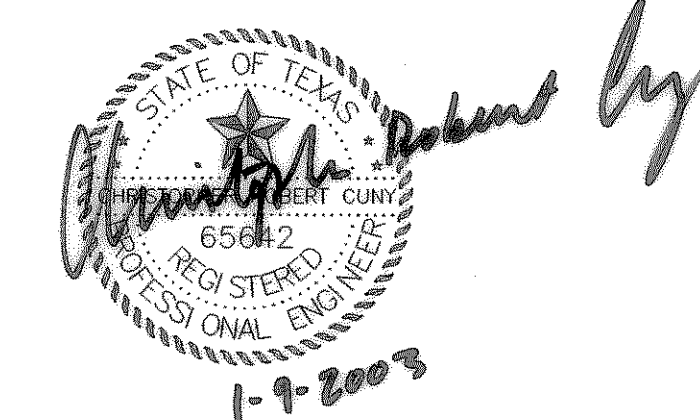


LOCATION MAP

INDEX of SHEETS

Sheet No.	Title
1	Cover Sheet
2	Dimension Control Plan
3	Grading Plan

THE SEAL APPEARING ON THIS
DOCUMENT WAS AUTHORIZED BY
CHRISTOPHER R. CUNY, P.E. 65642



Owner ~ Developer:
ROSS RAMSAY
 329 Valiant Drive
 Rockwall, Texas 75087

Engineer ~ Surveyor:
F.C. CUNY CORPORATION
 4222 Rosehill Rd, Suite 7 • Garland, Texas 75043 • (972) 240-7700

July, 2002

C:\Documents and Settings\USER\Desktop\Projects\Culpeppers\cul-cov.dwg Fri, Jan 03 10:13:42 2003