

X=2,591,543.01
Y=7,037,482.06
(BASED ON CITY OF ROCKWALL CONTROL)

STEPHEN BRADISH, SR.
VOL. 940, PG. 265

X=2,592,343.87
Y=7,037,672.12
(BASED ON CITY OF ROCKWALL CONTROL)

X=2,591,225.85
Y=7,037,253.35
(BASED ON CITY OF ROCKWALL CONTROL)

X=2,592,125.76
Y=7,037,191.51
(BASED ON CITY OF ROCKWALL CONTROL)

R=1074.53'
L=64.25'
T=32.13'
D=03°25'33"
CB=N44°11'09"W
CD=64.24'

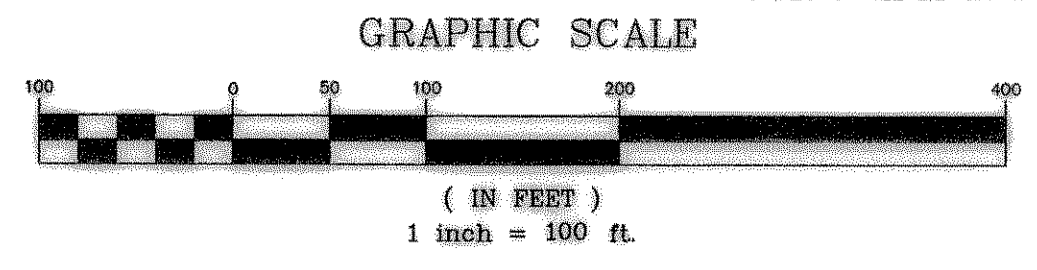
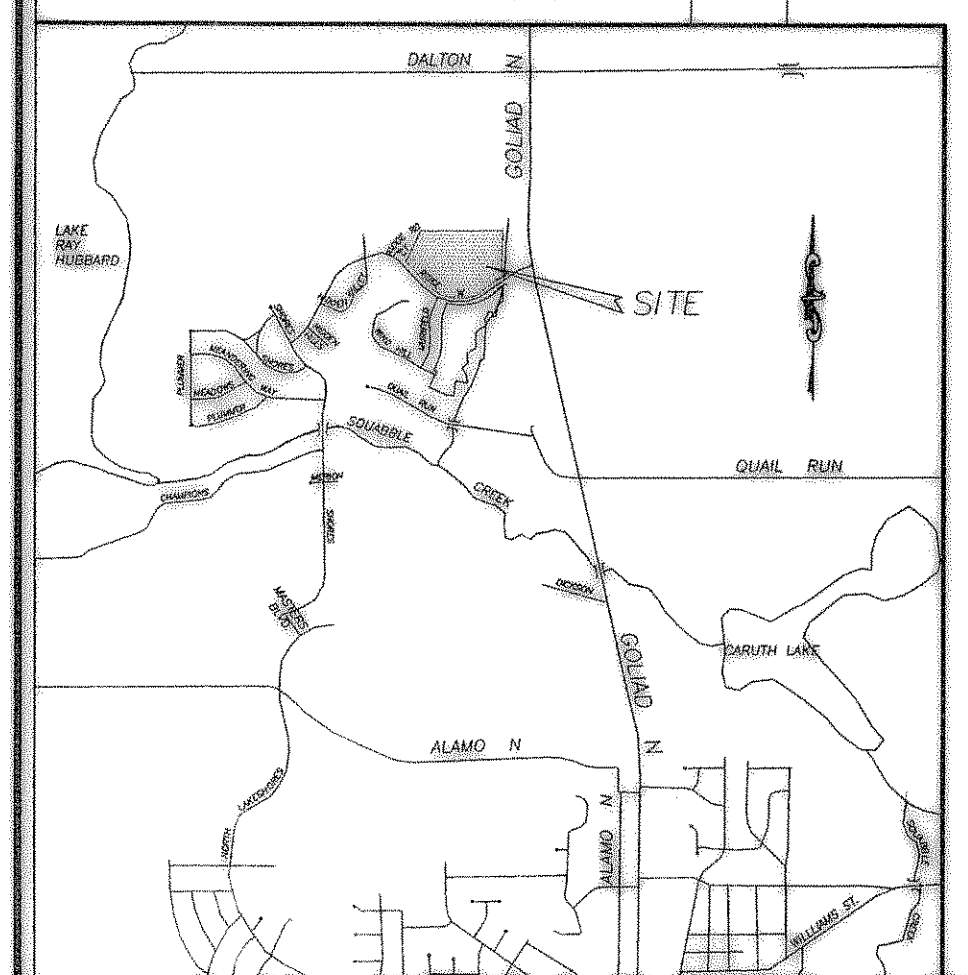
R=559.45'
L=711.75'
T=413.16'
D=73°53'35"
CB=N78°55'11"W
CD=664.71'

R=304.70'
L=164.10'
T=84.09'
D=30°51'24"
CB=S49°12'20"W
CD=162.12'

R=539.45'
L=11.93'
T=5.96'
D=01°16'01"
CB=S47°09'30"W
CD=11.93'

LINE TABLE

LINE	LENGTH	BEARING
L1	60.79	S00°22'55"E
L2	13.19	S09°29'10"E
L3	112.24	N66°40'18"W



CURVE TABLE

CURVE	LENGTH	RADIUS	TANGENT	CH BRG	CH DIST	DELTA
C1	45.29	285.00	22.69	S04°56'03"E	45.24	09°06'15"
C2	58.02	45.00	33.83	N27°27'08"E	54.09	73°52'36"
C3	479.53	429.45	268.23	S83°37'16"E	455.00	63°58'37"
C4	119.77	150.00	63.28	S20°36'03"E	116.61	45°44'57"
C5	107.61	410.00	54.12	N59°09'08"W	107.31	15°02'19"
C6	55.80	150.00	28.23	N33°59'08"E	55.48	21°18'52"

- NOTE:
1. DEVELOPER WILL SUBMIT BOND GUARANTEEING TREE REPLACEMENT EITHER BY FINANCIAL MEANS (ESCORROW) OR REPLACEMENT IN OTHER CITY AREAS.
 2. OPEN SPACE AND DETENTION POND LOTS TO BE MAINTAINED BY H.O.A.
 3. NO FENCES TO BE CONSTRUCTED WITH IN DRAINAGE EASEMENTS
 4. FENCES SHALL BE ON THE HOUSE SIDE OF DRAINAGE EASEMENT

FINAL PLAT
CREEKSIDE VILLAGE--PHASE TWO
SAMUEL KING SURVEY, ABSTRACT NO. 131
CITY OF ROCKWALL
ROCKWALL COUNTY, TEXAS

17.249 AC. - 63 LOTS

PROJECT: 088925.L
DATE: MARCH 00
SCALE: 1"=100'
DRAWN: O.L.B.
CHKD: W.L.D.

DOUPHRAE & ASSOCIATES, INC.
2826 RIDGE RD., ST. 200 ROCKWALL, TEXAS 75087
PHONE: (972)771-9004 FAX: (972)771-9000