

CAUTION!!!

UNDERGROUND UTILITIES

EXISTING UTILITIES AND UNDERGROUND FACILITIES INDICATED ON THESE PLANS HAVE BEEN LOCATED FROM REFERENCE INFORMATION SUPPLIED BY VARIOUS OWNERS OF THE FACILITIES. THE ENGINEER DOES NOT ACCEPT THE RESPONSIBILITY FOR THE UTILITY LOCATIONS SHOWN. IT SHALL BE THE RESPONSIBILITY OF THE CONTRACTOR TO VERIFY BOTH HORIZONTALLY AND VERTICALLY THE LOCATION OF ALL EXISTING UTILITIES AND UNDERGROUND FACILITIES PRIOR TO CONSTRUCTION. TO TAKE NECESSARY PRECAUTIONS IN ORDER TO PROTECT ALL FACILITIES ENCOUNTERED, AND TO NOTIFY THE ENGINEER PROMPTLY OF ALL CONFLICTS OF THE WORK WITH EXISTING FACILITIES. THE CONTRACTOR SHALL PRESERVE AND PROTECT ALL EXISTING UTILITIES FROM DAMAGE DURING CONSTRUCTION. ANY DAMAGE BY THE CONTRACTOR TO EXISTING UTILITIES SHALL BE REPAIRED BY THE CONTRACTOR AT HIS EXPENSE. CONTACT ALL POSSIBLE UTILITY AND UNDERGROUND FACILITY OWNERS.

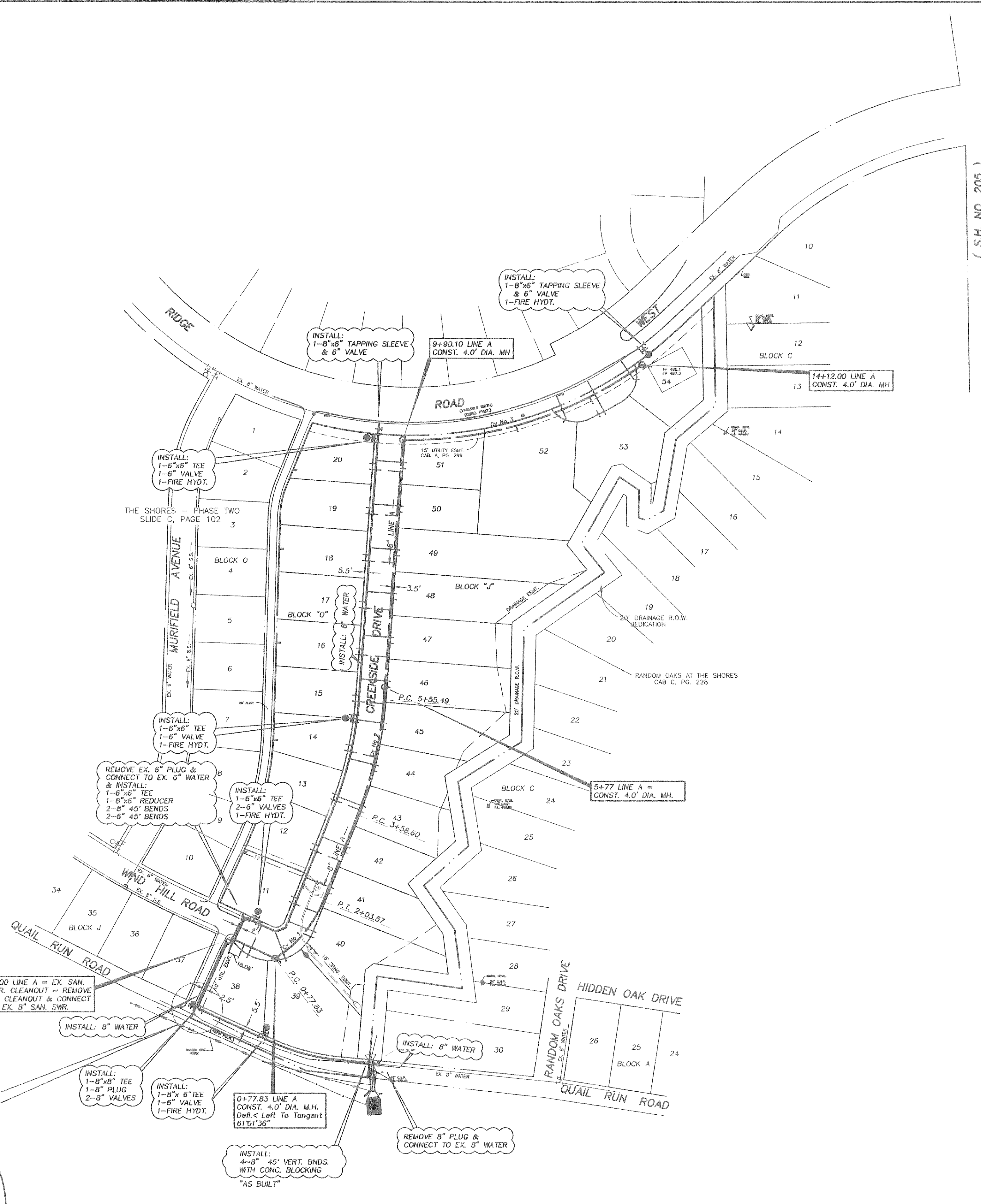
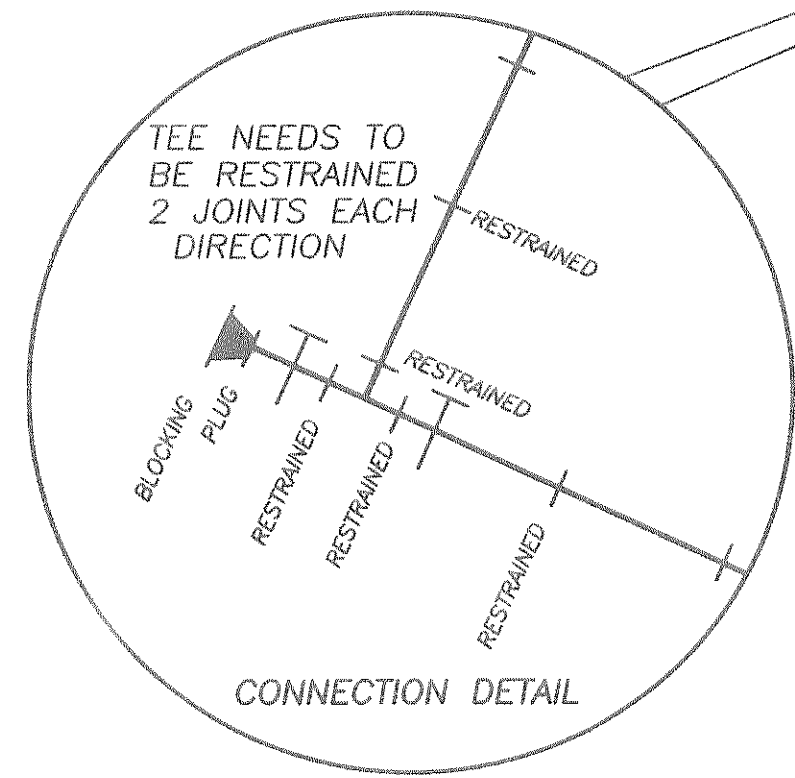
WATER LINE GENERAL NOTES

- UNLESS OTHERWISE NOTED, ALL MATERIAL AND CONSTRUCTION SHALL CONFORM TO THE CURRENT CITY OF ROCKWALL "STANDARDS OF DESIGN, STANDARD SPECIFICATIONS FOR CONSTRUCTION, STANDARD DETAILS FOR THE CITY OF ROCKWALL" MANUAL. (WATER LINES TO BE C-900 CLASS 200 WATER PIPE, SERVICES TO BE MINIMUM 1 INCH POLYETHYLENE)
- ALL DUCTILE IRON FITTINGS SHALL BE OF THE MECHANICAL JOINT TYPE OR SLIP JOINT, EXCEPT AS NOTED, AND SHALL BE CLASS "D" OR CLASS 250 ON SIZES 12" AND SMALLER IN ACCORDANCE WITH AWWA SPECIFICATION C-111-64.
- WATER MAINS SHALL HAVE A MINIMUM COVER OF 36".
- FIRE HYDRANTS SHALL BE EITHER MUELLER, AMERICAN DARLING OR AN APPROVED EQUIVALENT CONFORMING TO THE REQUIREMENTS SET FORTH IN THE CITY OF ROCKWALL "STANDARD SPECIFICATIONS FOR CONSTRUCTION". ALL FIRE HYDRANTS SHALL BE INSTALLED WITH A 6-INCH GATE VALVE ON THE HYDRANT LEAD AND WILL BE PLACED 2-4 FEET FROM BACK OF CURB UNLESS OTHERWISE INDICATED ON THE PLANS OR AS REQUIRED TO CLEAR SIDEWALK. DO NOT PLACE FIRE HYDRANTS IN STREET CURB RETURNS.
- FIRE HYDRANT BONNETS AND CAPS WILL BE PAINTED TO CONFORM WITH CITY SPECIFICATIONS FOR COLOR CODE AS SET FORTH IN THE "STANDARD SPECIFICATIONS FOR CONSTRUCTION".
- GATE VALVES SHALL BE MANUFACTURED BY MUELLER OR KENNEDY, OR AN APPROVED EQUIVALENT AND SHALL CONFORM TO AND SHALL BE INSTALLED ACCORDING TO THE CITY OF ROCKWALL "STANDARD SPECIFICATIONS FOR CONSTRUCTION".
- FLUSH VALVES OR AN APPROVED EQUIVALENT SHALL BE INSTALLED ON ALL DEAD-END WATER LINES AND SHALL COMPLY WITH THE CITY OF ROCKWALL STANDARD DETAILS.
- WHENEVER SANITARY SEWER MAINS ARE LOCATED IN THE STREET, IT SHALL BE PLACED 7 FEET BACK OF CURB, UNLESS OTHERWISE SHOWN ON PLANS. ALL WATER AND SANITARY SEWER MAINS SHALL HAVE A 10.0 FEET MINIMUM LATERAL SEPARATION.
- IN THE EVENT AN ITEM IS NOT COVERED IN THE CITY OF ROCKWALL "STANDARD SPECIFICATIONS FOR CONSTRUCTION", THE CITY ENGINEER'S DECISION SHALL APPLY.

SANITARY SEWER GENERAL NOTES

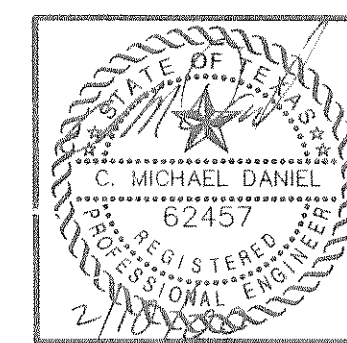
- UNLESS OTHERWISE NOTED, ALL MATERIAL AND CONSTRUCTION SHALL CONFORM TO THE CURRENT CITY OF ROCKWALL "STANDARD OF DESIGN, STANDARD SPECIFICATIONS FOR CONSTRUCTION, STANDARD DETAILS FOR THE CITY OF ROCKWALL" MANUAL.
- WHENEVER SANITARY SEWER MAINS ARE LOCATED IN THE STREET, IT SHALL BE PLACED 7 FEET BACK OF CURB, UNLESS OTHERWISE SHOWN ON PLANS. ALL WATER AND SANITARY SEWER MAINS SHALL HAVE A 10.0 FEET MINIMUM LATERAL SEPARATION.
- SEWER PIPE AND SERVICES SHALL BE SDR35 P.V.C. GRAVITY PIPE UNLESS SHOWN OTHERWISE ON THESE PLANS.
- IN THE EVENT AN ITEM IS NOT COVERED IN THE CITY OF ROCKWALL "STANDARD SPECIFICATIONS FOR CONSTRUCTION", THE CITY ENGINEER'S DECISION SHALL APPLY.
- AT WATER AND SEWER MAIN CROSSINGS, SEWER PIPE JOINTS SHALL NOT BE LOCATED CLOSER THAN TEN HORIZONTAL FEET FROM THE WATER MAIN. IF THIS CONVENTION CANNOT BE ADHERED TO, THE SEWER PIPE JOINTS SHALL BE PRESSURE TYPE. (150 P.S.I. MINIMUM)
- THE GENERAL CROSSING LOCATIONS FOR STORM DRAIN PIPES ARE SHOWN AND DENOTED HEREON. THE CONTRACTOR SHALL BE RESPONSIBLE FOR LOCATING THE STORM DRAIN CROSSING FROM THE PLAN INFORMATION PROVIDED HEREON AND ELSEWHERE IN THESE PLANS. THE VERTICAL CLEARANCES BETWEEN WATER, SANITARY SEWER, AND STORM DRAIN PIPE LINES SHOWN ON THESE PLANS SHALL BE ADHERED TO.
- ALL SANITARY SEWER SERVICE LATERALS SHALL INCLUDE 4" WYE, BEND, PIPE, AND STOPPER INSTALLED 10.0 FEET DOWNSTREAM OF THE CENTERLINE OF LOTS, UNLESS OTHERWISE SHOWN ON PLANS.
- TRENCH WALLS SHALL BE CONSTRUCTED IN STRICT ACCORDANCE WITH THE LATEST OCCUPATIONAL SAFETY AND HEALTH ADMINISTRATION STANDARDS AND MAY BE SLOPED OR VERTICAL ABOVE THE PIPE EMBEDMENT AT THE CONTRACTOR'S OPTION. IN SOME LOCATIONS, THE AVAILABLE WORKING AREA MAY BE INADEQUATE TO ALLOW FOR FULLY SLOPED TRENCH WALLS. IN THESE AREAS, THE CONTRACTOR SHALL PROVIDE TEMPORARY SHEETING, SHORING OR BRACING OF TRENCH WALLS, AS NECESSARY, IN STRICT ACCORDANCE WITH O.S.H.A. STANDARDS, TO PREVENT SLIDES, CAVE-INS, SETTLEMENT OR MOVEMENT OF THE BANKS AND TO PROVIDE SAFE WORKING CONDITIONS FOR WORKMEN. PAYMENT FOR SLOPED OR SHEETED, SHORED OR BRACED TRENCH WALLS CONSTRUCTED IN ACCORDANCE WITH O.S.H.A. STANDARDS SHALL BE LIMITED TO THE BID ITEMS IN THE PROPOSAL FOR TRENCH SAFETY SYSTEMS. TRENCH CONSTRUCTION SHALL BE LIMITED TO THE STREET RIGHT-OF-WAY. PERMANENT EASEMENTS AND AREAS DELINEATED AS LIMITS OF CONSTRUCTION AS SHOWN ON THE PLANS.
- CAUTION: SANITARY SEWER LINE IS IN CLOSE PROXIMITY OF STORM DRAIN BOTH HORIZONTALLY AND VERTICALLY.

NOTE: GREEN EMS LOCATOR PADS FOR SEWER AND BLUE FOR WATER.



Curve No.	Inlet	Interior
1	36.0716°	200.00'
2	65.02°	125.74'
3	172.56°	646.50'
4	99.21°	196.80'
5	172.53°	646.95'
6	218.78°	121.90'

BENCHMARKS:
 BRASS DISK IN CONC. MONUMENT, 50'± NORTH OF BACK OF CURB ON THE NORTH SIDE OF RIDGE ROAD WEST 500'± EAST OF MURFIELD DRIVE (CITY OF ROCKWALL MONUMENT #9)
 ELEV. 502.67
 BRASS DISK IN CONC. MONUMENT, IN MEDIUM OF NORTH LAKESHORE DRIVE 150'± NORTH OF ALAMO DRIVE (CITY OF ROCKWALL MONUMENT #10)
 ELEV. 524.62



revisions	date
REVISED PER CITY REVIEW	3-20-97
REVISED	8-21-97
REVISED PER CITY REVIEW	NOV. 1997
REVISED PER CITY REVIEW	APRIL, 1999
REVISED TO SHOW AS BUILT CONDITIONS	FEB. 2000

NDM
 NATHAN D. MAIER
 CONSULTING ENGINEERS, INC.
 Three Northpark / 8800 N. Central Expy. / Suite 300
 Dallas, Texas 75231 / (214) 739-4741

RECORD DRAWING
 DATE: 2/10/06
 THIS RECORD DRAWING HEREIN RELIES TO THE BEST OF THE DESIGN ENGINEER'S KNOWLEDGE ON THE APPROXIMATE LOCATION OF THE CONSTRUCTED WORK. THE INFORMATION AS PROVIDED BY THE CONTRACTOR.

WATER & SANITARY SEWER PLAN
 CREEKSIDE
 THE SHORES
 CITY OF ROCKWALL, TEXAS

Sheet No. 8 of 17
 Job Number: 95-05-036.L