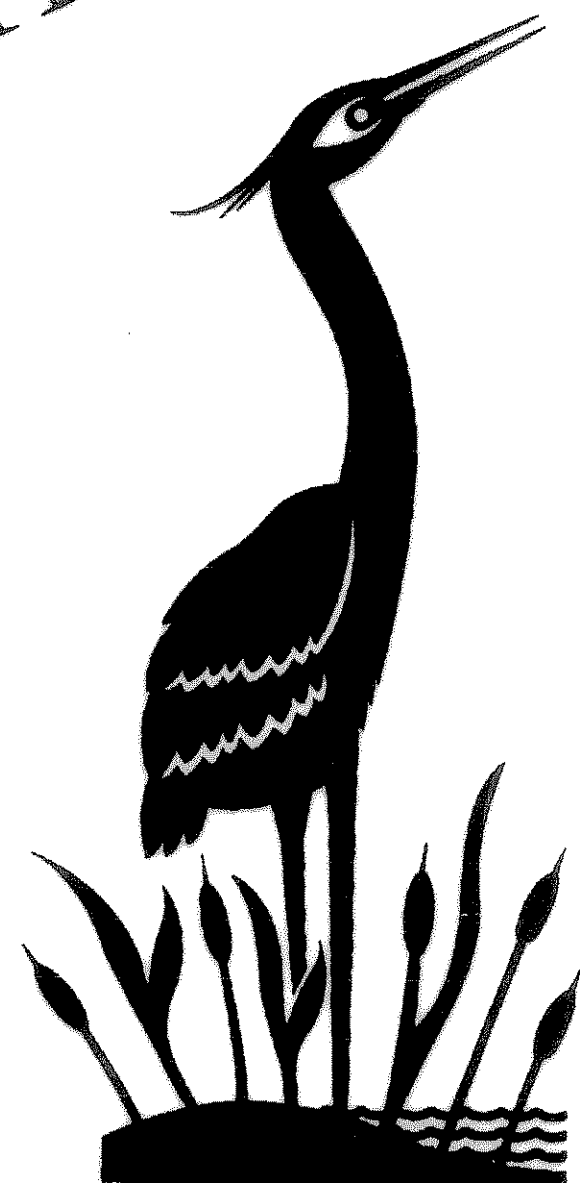


# CONSTRUCTION PLANS

FOR

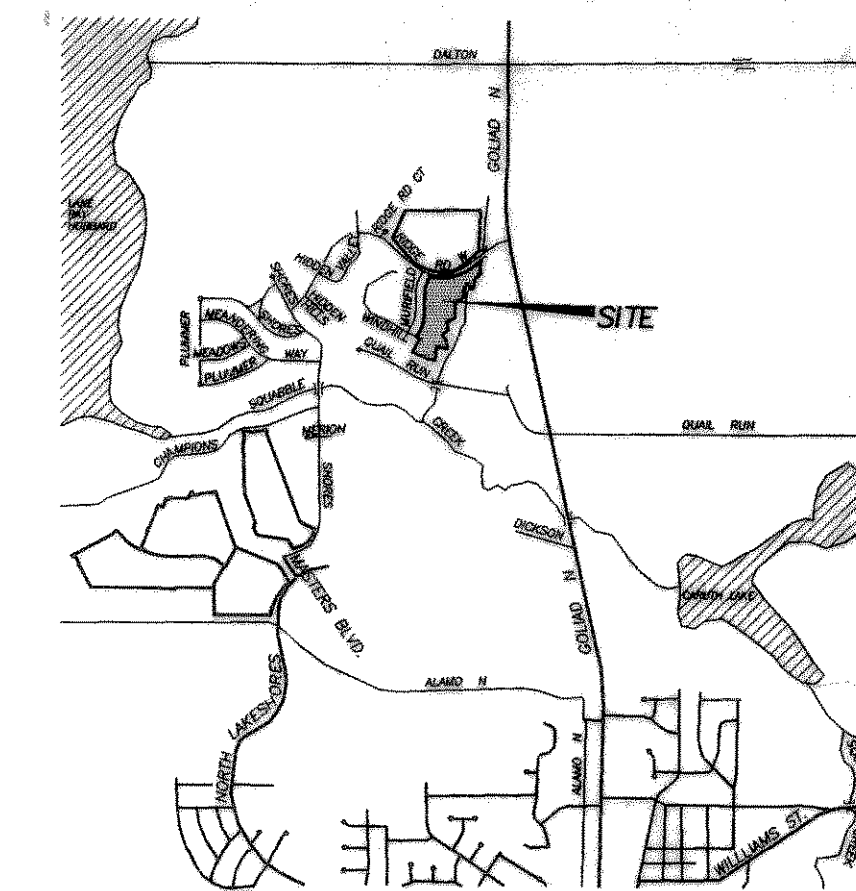
## CREEKSIDE THE SHORES

THE SHORES



CITY OF ROCKWALL, TEXAS

### Project Location :



### Sheet Index :

DESCRIPTION	SHEET NO.
COVER SHEET	1
FINAL PLAT	2
OWNER'S CERTIFICATE	3
PAVING PLAN & PROFILE	4
PAVING PLAN	5
DRAINAGE AREA MAP	6
STORM SEWER PLAN & PROFILE	7
WATER & SANITARY SEWER PLAN	8
SANITARY SEWER PROFILES	9
GRADING PLAN	10
GRADING PLAN	11
EROSION CONTROL PLAN	12
TREE SURVEY	13
TREESCAPE PLAN	14
STORM WATER POLLUTION PREVENTION PLAN	15-17



NATHAN D. MAIER  
CONSULTING ENGINEERS, INC.

RECORD DRAWING

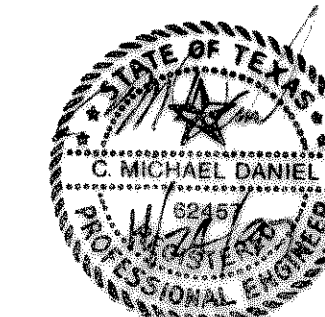
DATE: \_\_\_\_\_  
THIS RECORD DRAWING HEREIN REFLECTS TO THE BEST OF THE DESIGN ENGINEER'S KNOWLEDGE THE APPROXIMATE LOCATION OF THE CONSTRUCTED WORK USING INFORMATION AS PROVIDED BY THE CONTRACTOR(S).

Developer:

THE SHORES INVESTORS, LP  
600 N. PEARL STREET #650  
DALLAS, TEXAS 75201

Three North Park 8800 N. Central Expwy. Suite 300

Dallas, Texas 75231 (214) 739-4741



Job Number :

95-05-036.L