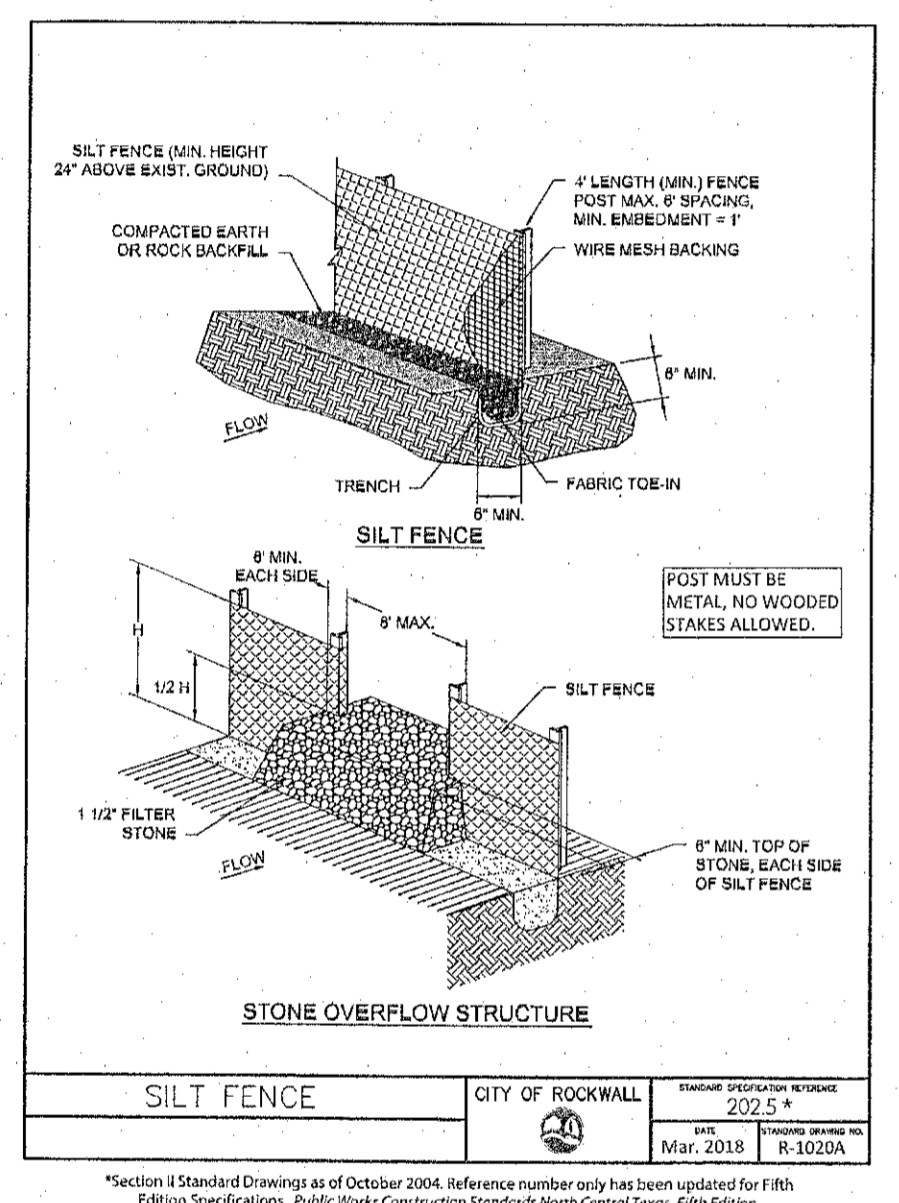
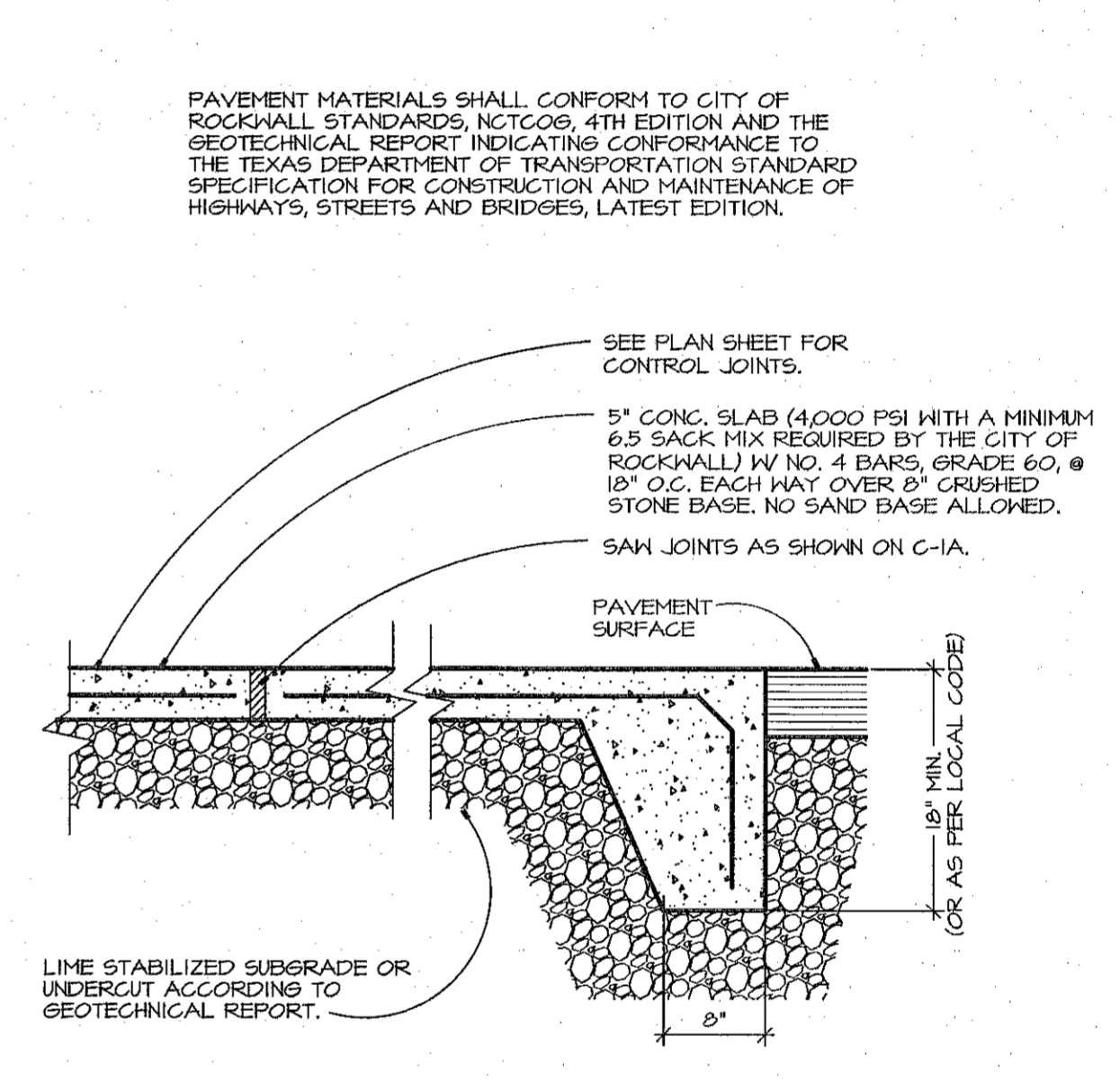
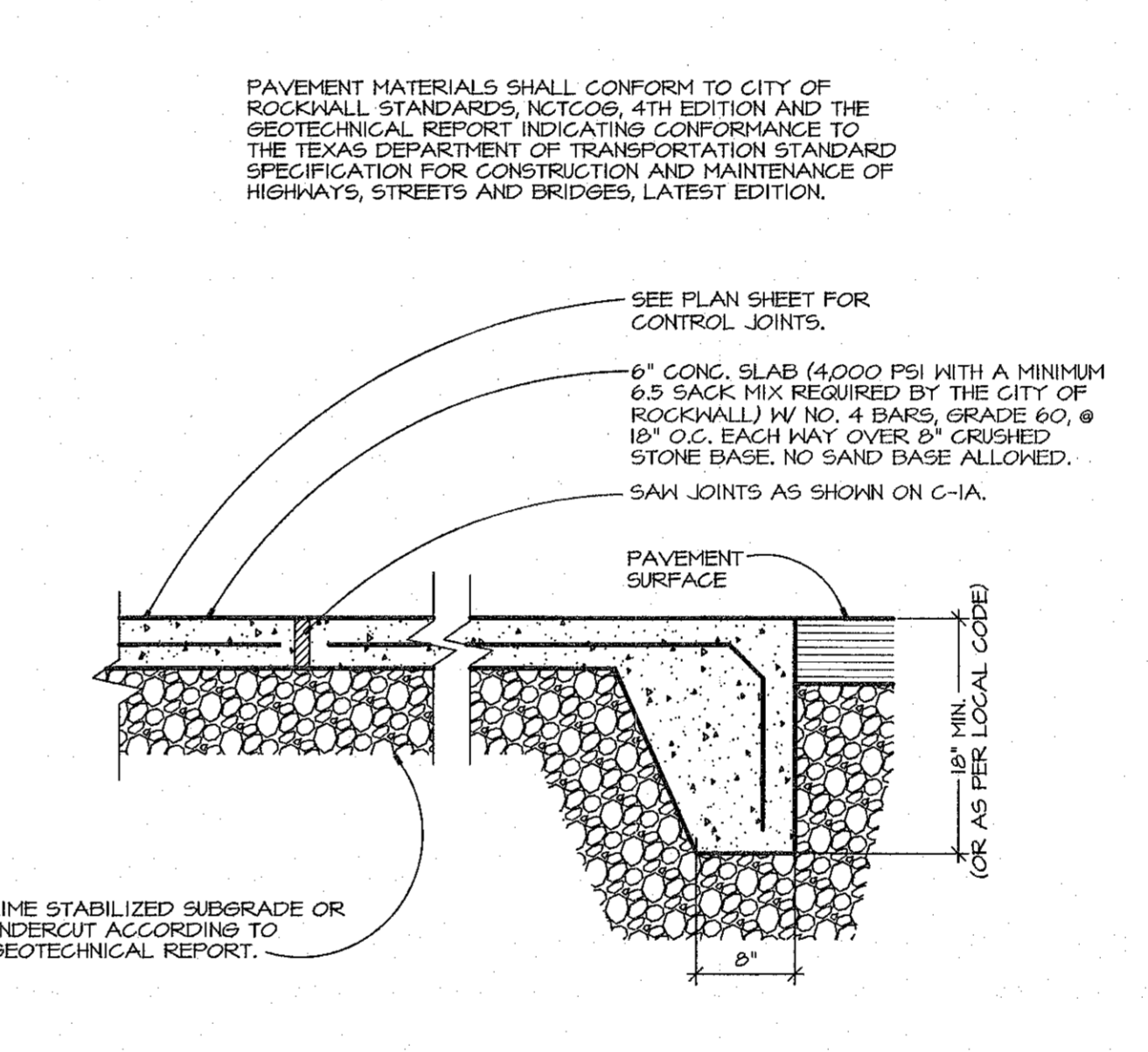
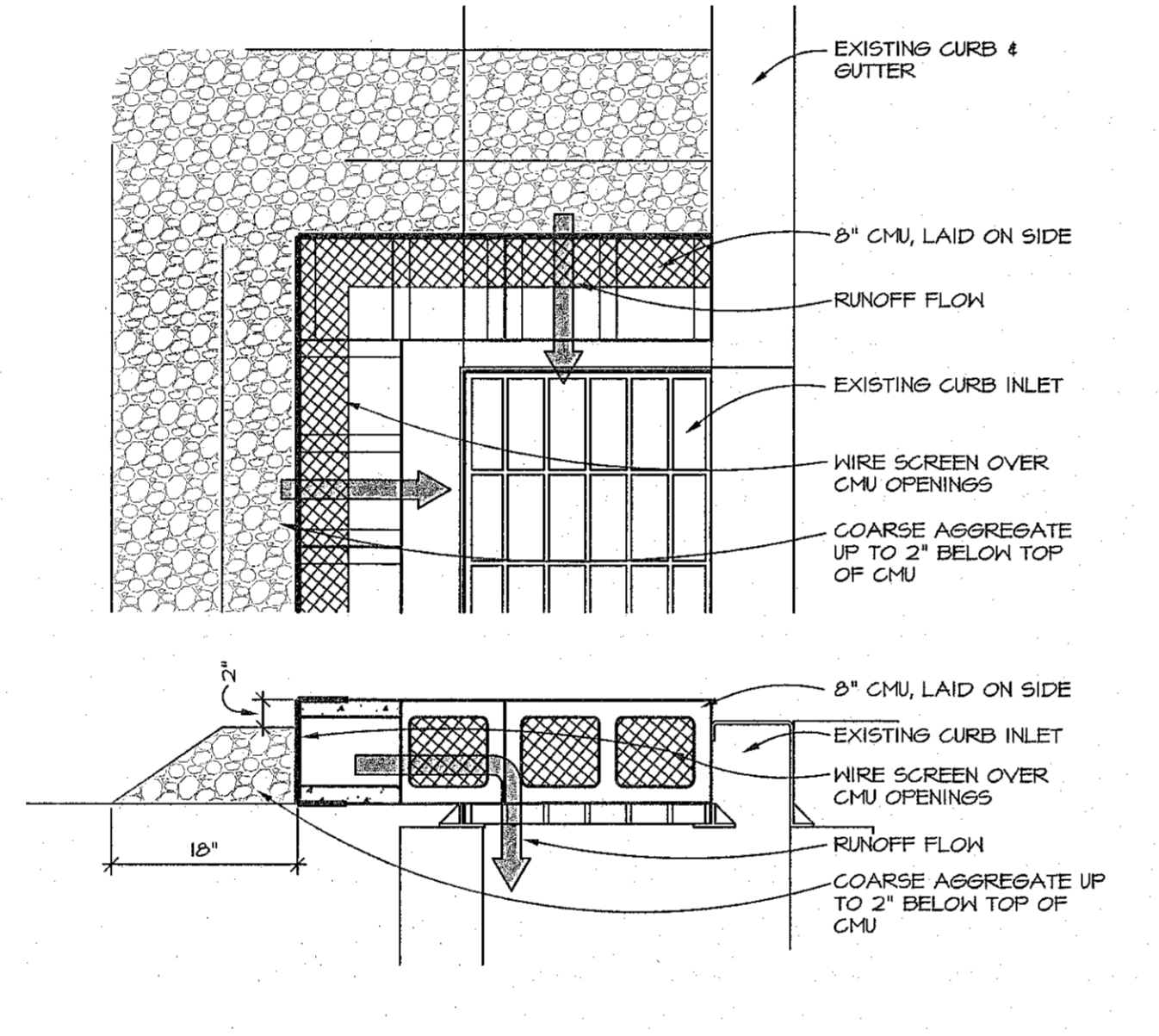


- STABILIZED CONSTRUCTION ENTRANCE GENERAL NOTES:
1. STONE SHALL BE 4 TO 8 INCH DIAMETER COARSE AGGREGATE.
 2. MINIMUM LENGTH SHALL BE 50 FEET AND WIDTH SHALL BE 20 FEET.
 3. THE THICKNESS SHALL NOT BE LESS THAN 12 INCHES.
 4. THE WIDTH SHALL BE NO LESS THAN THE FULL WIDTH OF ALL POINTS OF INGRESS OR EGRESS.
 5. WHEN NECESSARY, VEHICLES SHALL BE CLEANED TO REMOVE SEDIMENT PRIOR TO ENTRANCE ONTO A PUBLIC ROADWAY. WHEN WASHING IS REQUIRED, IT SHALL BE DONE ON AN AREA STABILIZED WITH CRUSHED STONE WITH DRAINAGE FLOWING AWAY FROM BOTH THE STREET AND THE STABILIZED ENTRANCE. ALL SEDIMENT SHALL BE PREVENTED FROM ENTERING ANY STORM DRAIN, DITCH OR WATERCOURSE USING APPROVED METHODS.
 6. THE ENTRANCE SHALL BE MAINTAINED IN A CONDITION WHICH WILL PREVENT TRACKING OR FLOWING OF SEDIMENT ONTO PAVED SURFACES. THIS MAY REQUIRE PERIODIC TOP DRESSING WITH ADDITIONAL STONE AS CONDITIONS DEMAND. ALL SEDIMENT SPILLED, DROPPED, WASHED, OR TRACKED ONTO PAVED SURFACES MUST BE REMOVED IMMEDIATELY.
 7. THE ENTRANCE MUST BE PROPERLY GRADED OR INCORPORATE A DRAINAGE SWALE TO PREVENT RUNOFF FROM LEAVING THE CONSTRUCTION SITE.
 8. PREVENT SHORTCUTTING OF THE FULL LENGTH OF THE CONSTRUCTION ENTRANCE BY INSTALLING BARRIERS AS NECESSARY.
 9. INSPECTION SHALL BE AS SPECIFIED IN THE SWPPP.
 10. NO CRUSHED CONCRETE ALLOWED.
- STABILIZED CONSTRUCTION ENTRANCE CITY OF ROCKWALL 2022.11 2022.11 2022.11 2022.11

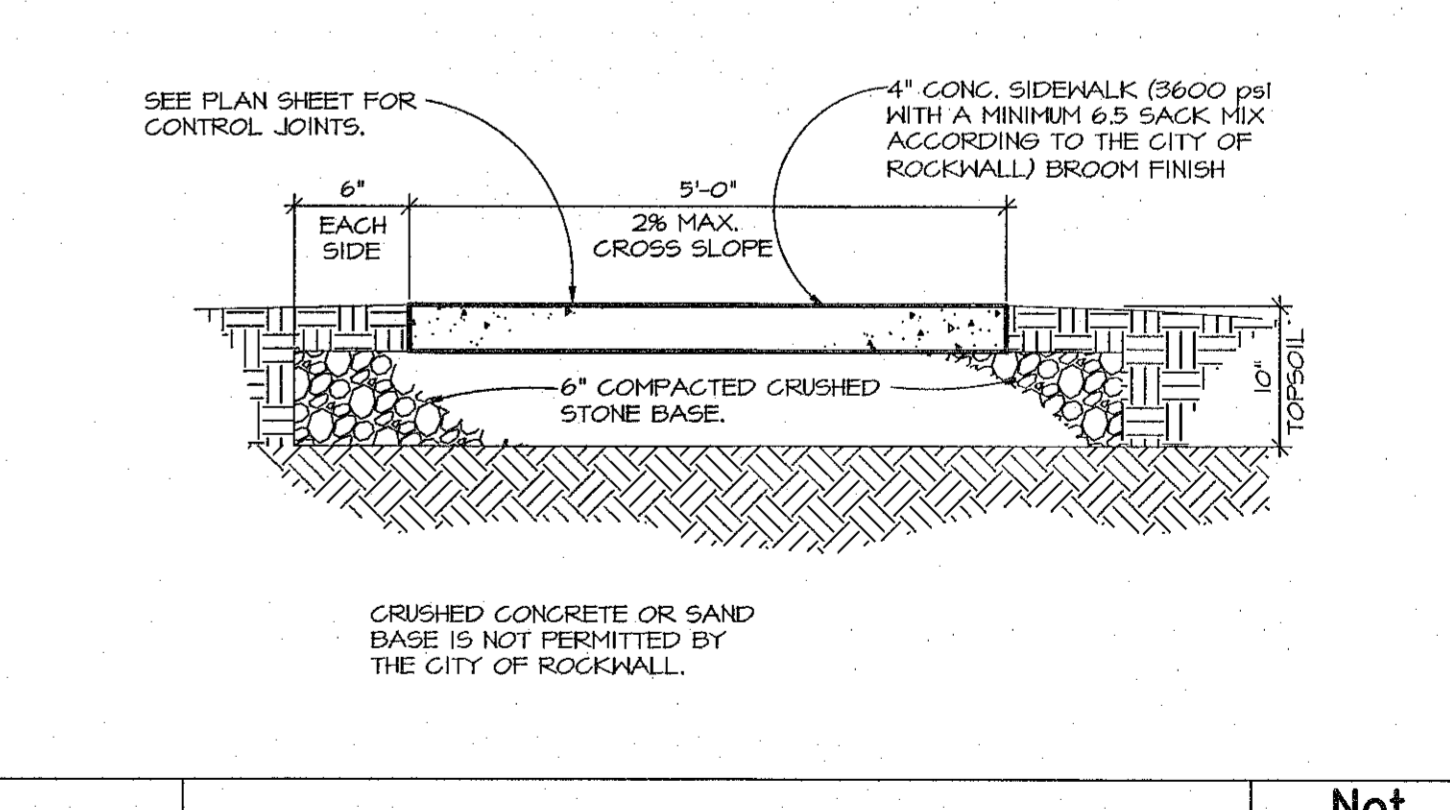
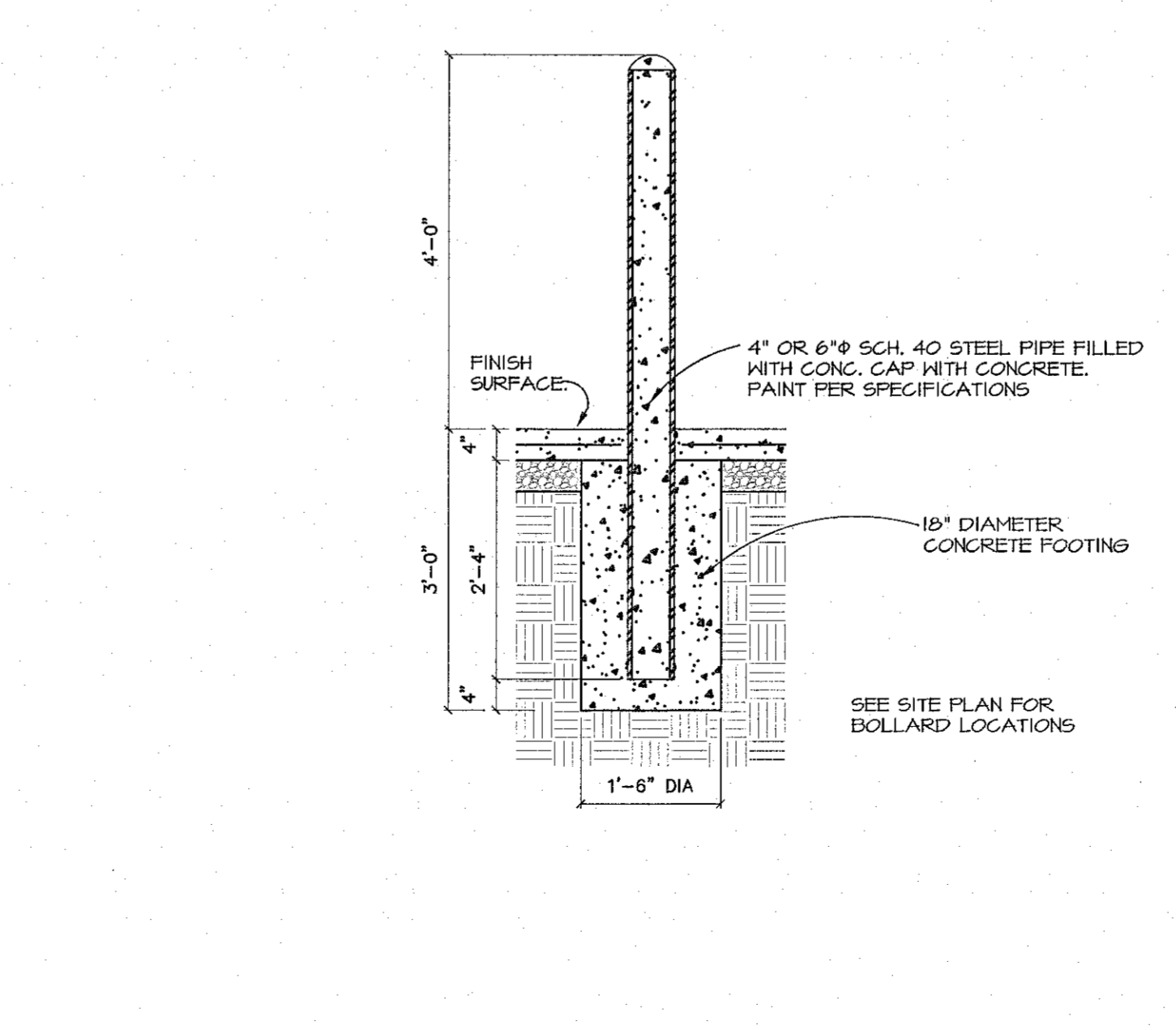
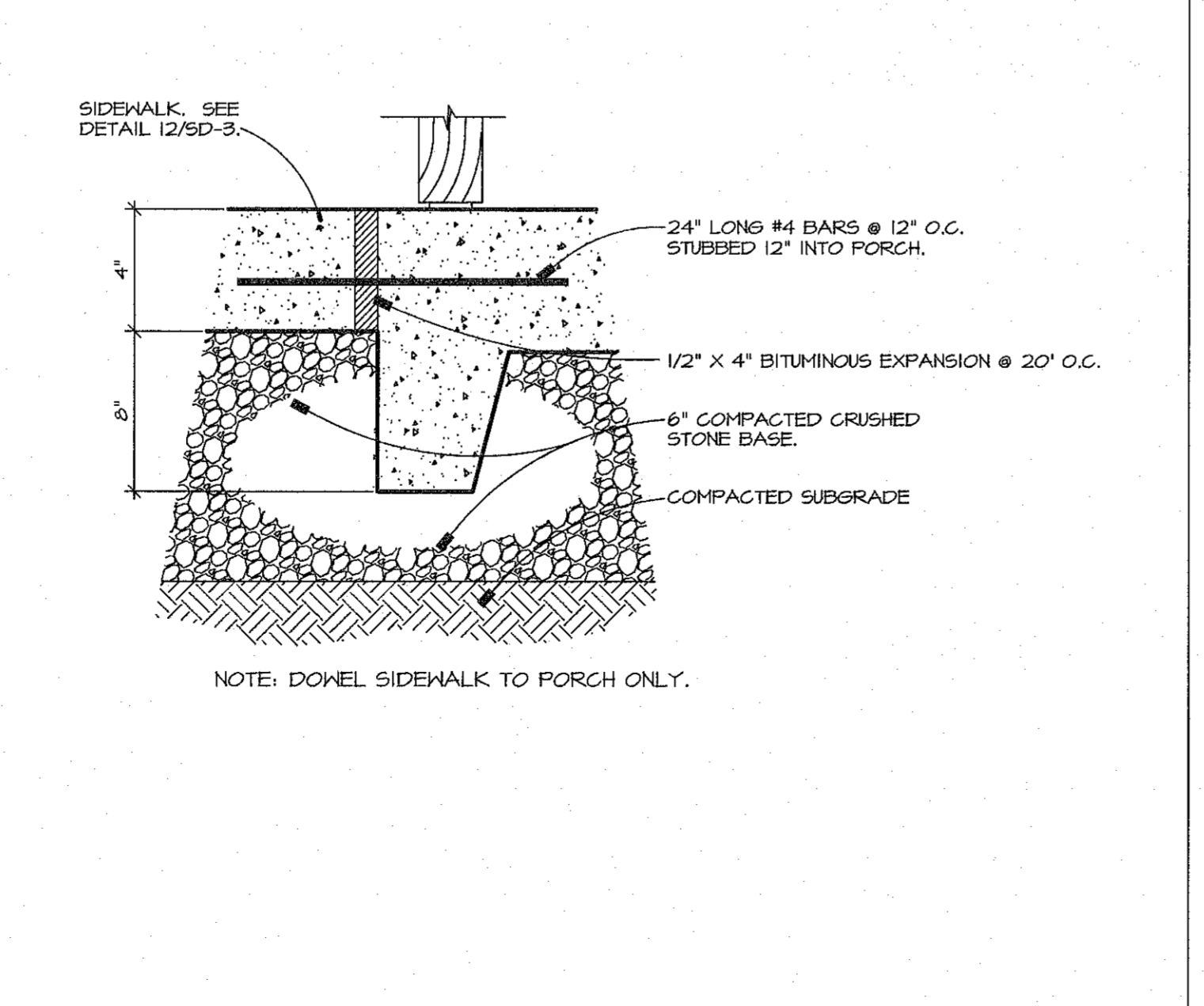
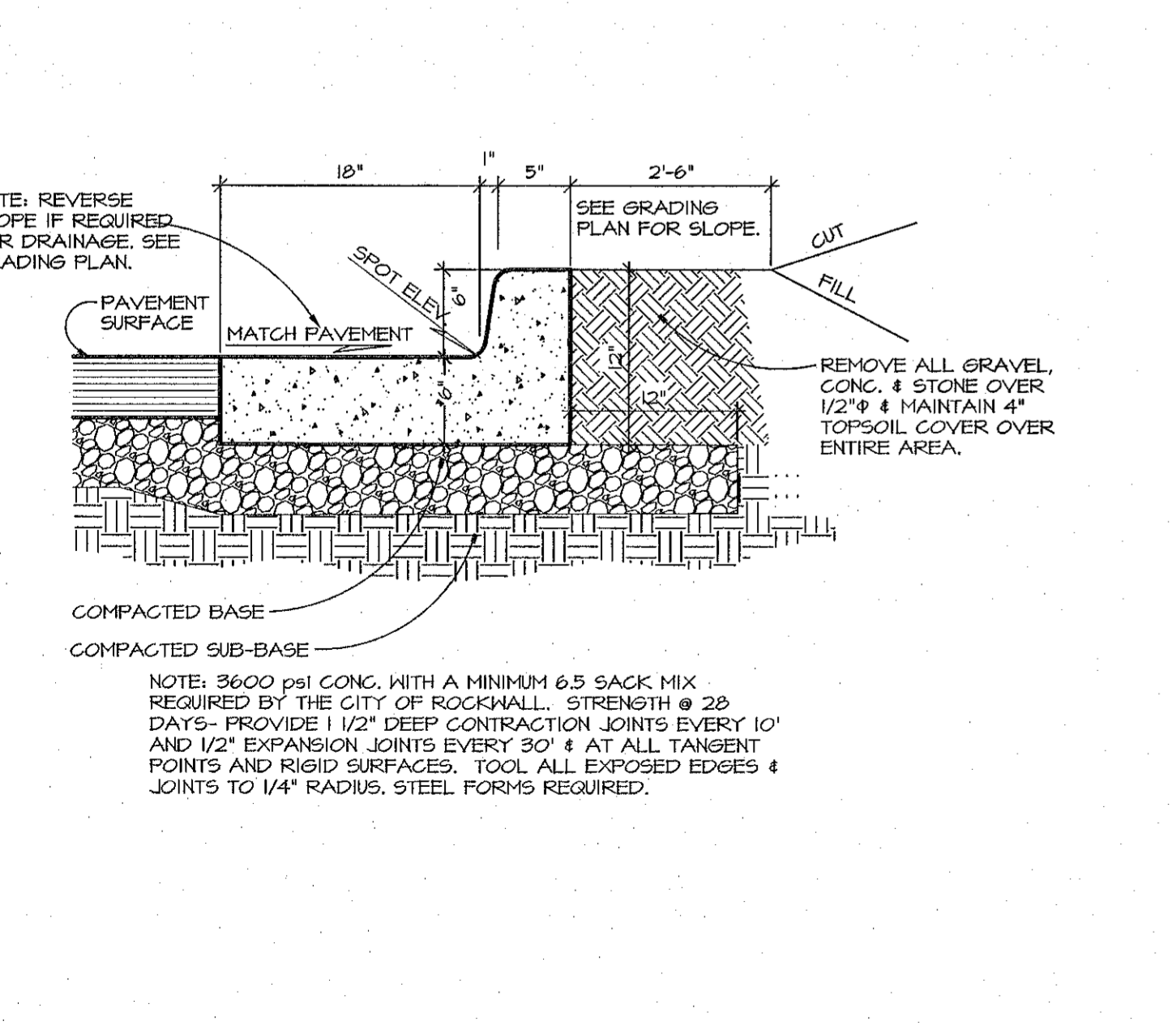
1	PLANTER ISLAND DETAIL	Not to Scale	2	GROUND MOUNT LIGHT DETAIL	Not to Scale	3	ACCESSIBLE RAMP DETAIL	Not to Scale	4	CITY OF ROCKWALL TEMPORARY CONSTRUCTION EXIT DETAIL	Not to Scale
---	-----------------------	--------------	---	---------------------------	--------------	---	------------------------	--------------	---	---	--------------



- SILT FENCE GENERAL NOTES:
1. POSTS WHICH SUPPORT THE SILT FENCE SHALL BE INSTALLED ON A SLIGHT ANGLE TOWARD THE ANTICIPATED RUNOFF SOURCE. POST MUST BE EMBEDDED A MINIMUM OF ONE FOOT.
 2. THE TOP OF THE SILT FENCE SHALL BE TRENCHED IN WITH A SPADE OR MECHANICAL TRENCHER, SO THAT THE DOWNSLOPE FACE OF THE TRENCH IS FLAT AND PERPENDICULAR TO THE LINE OF FLOW. WHERE FENCE CANNOT BE TRENCHED IN (e.g. PAVEMENT), WEIGHT FABRIC FLAP WITH ROCK ON UPHILL SIDE TO PREVENT FLOW FROM SEEPING UNDER FENCE.
 3. THE TRENCH MUST BE A MINIMUM OF 6 INCHES DEEP AND 6 INCHES WIDE TO ALLOW FOR THE SILT FENCE FABRIC TO BE LAID IN THE GROUND AND BACKFILLED WITH COMPACTED MATERIAL.
 4. SILT FENCE SHOULD BE SECURELY FASTENED TO EACH SUPPORT POST OR TO WIRE BACKING, WHICH IN TURN IS ATTACHED TO THE FENCE POST. THERE SHALL BE A 3 FOOT OVERLAP, SECURELY FASTENED WHERE ENDS OF FABRIC MEET.
 5. INSPECTION SHALL BE AS SPECIFIED IN THE SWPPP. REPAIR OR REPLACEMENT SHALL BE MADE PROMPTLY AS NEEDED.
 6. SILT FENCE SHALL BE REMOVED WHEN FINAL STABILIZATION IS ACHIEVED OR ANOTHER EROSION OR SEDIMENT CONTROL DEVICE IS EMPLOYED.
 7. ACCUMULATED SILT SHALL BE REMOVED WHEN IT REACHES A DEPTH OF HALF THE HEIGHT OF THE FENCE. THE SILT SHALL BE DISPOSED OF AT AN APPROVED SITE AND IN SUCH A MANNER AS TO NOT CONTRIBUTE TO ADDITIONAL SILTATION.
 8. FILTER STONE SHALL BE WRAPPED IN FILTER FABRIC AND BURIED SIX (6) INCHES MINIMUM.
- SILT FENCE CITY OF ROCKWALL 2022.5 2022.5 2022.5 2022.5



5	SILT FENCE DETAIL	Not to Scale	6	INLET PROTECTION DETAIL	Not to Scale	7	CONCRETE PAVEMENT FOR DRIVE AISLES DETAIL	Not to Scale	8	CONCRETE PAVEMENT FOR PARKING BAYS DETAIL	Not to Scale
---	-------------------	--------------	---	-------------------------	--------------	---	---	--------------	---	---	--------------



9	CURB & GUTTER DETAIL	Not to Scale	10	SIDEWALK/PORCH TIE-IN CONSTRUCTION JOINT DETAIL	Not to Scale	11	BOLLARD DETAIL	Not to Scale	12	SIDEWALK DETAIL	Not to Scale
---	----------------------	--------------	----	---	--------------	----	----------------	--------------	----	-----------------	--------------

PROPERTY OWNER: KOHL'S ILLINOIS, INC. 1561000 RIDGECROOK DRIVE MEMPHIS FALLS, WISCONSIN 53051 ERIC BORKEN-ANDSEN (262) 703-7000

OWNER: CBOCS TEXAS LIMITED PARTNERSHIP P.O. BOX 787 LEBANON, TENNESSEE 37088-0787 TELEPHONE: (615) 444-5533

PLANS PREPARED BY: JAMES A. CRAIG, P.E. DESIGN AND ENGINEERING, INC. 1645 WESTGATE CIRCLE BRENTWOOD, TENNESSEE 37027 (615) 370-1714

CRACKER BARREL OLD COUNTRY STORE, INC. 845 E. INTERSTATE 30 FRONTAGE RD. ROCKWALL, TEXAS 75087 BLOCK A, LOT 1 CASE NUMBER: SP2018-028

CRACKER BARREL PROJECT NUMBER: CB 764 ROCKWALL, TX -03

CRACKER BARREL OLD COUNTRY STORE, INC. 845 EAST INTERSTATE 30 ROCKWALL, TEXAS 75087

These construction documents are the exclusive property of Cracker Barrel Old Country Store, Inc. The information shown herein is for the use of Cracker Barrel Old Country Store, Inc. only.

Cracker Barrel

P.O. Box 787 Hartmann Drive, Lebanon, TN. 37087

DESIGN AND ENGINEERING, INC. TEXAS COA #F-4774

1645 Westgate Circle Brentwood, TN 37027 615-370-1779 fax: 370-9108 www.dandenginc.us

DESIGN and ENGINEERING INC. STRUCTURAL AND CIVIL ENGINEERS

DATE: 12-18-14

PROJECT NO: 11-1645

REVISIONS

CRACKER BARREL Old Country Store

RECORD STANDARD DETAILS

RSD-3

PROT 028-13F