



COLONIAL BANK

ROCKWALL
BRANCH

1-30 W & LAGUNA DR.
ROCKWALL, TX 75087

3500L_WESTERN



REVISIONS

NO.	DESCRIPTION	DATE
	BID/PERMIT ISSUE	7-16-07
	CITY COMMENTS	9-20-07
	DIMENSION CONTROL	01-02-08
	AS-BUILT	07-02-08

DATE ISSUED: 04-13-07
REVIEWED BY: RR
DRAWN BY: MH
DESIGNED BY: RR/MH

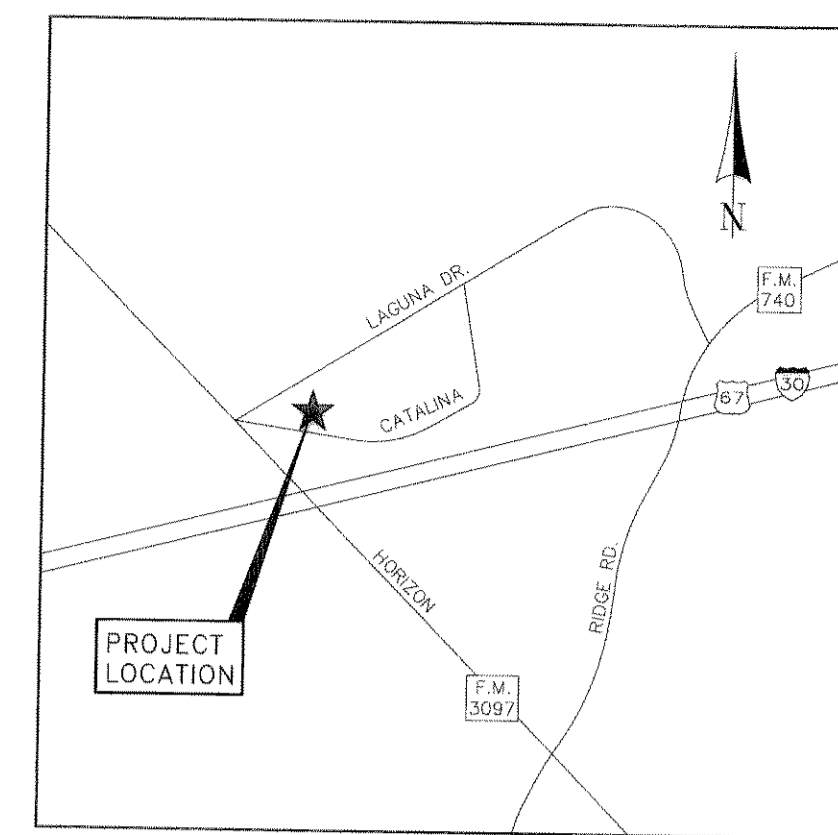
AEP PROJECT NUMBER
512-6041-021

© 2006 REYNOLDS, SMITH AND HILLS, INC.

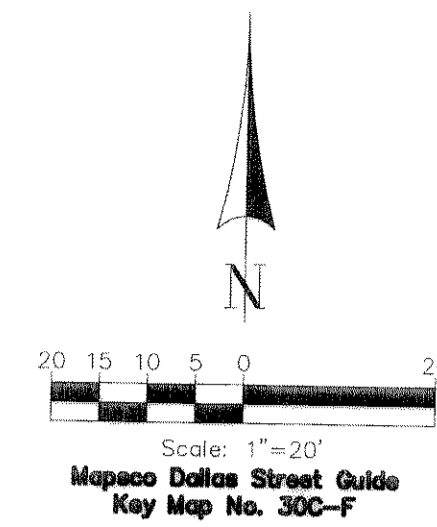
PAVING & JOINT LAYOUT PLAN

SHEET NUMBER

C3



VICINITY MAP
NOT TO SCALE



LEGEND	
—●—	Anchor
---●---	Telephone Cable Marker
+	Fire Hydrant
○	Guard Post
⊙	Gas-Tank Marker
⊙	Light Standard
□	Pull Box
⊙	Telephone/Electric Pole
⊙	Sign
⊙	Sprinkler Valve
⊙	Water Valve

REFERENCE BENCHMARK
CITY OF ROCKWALL MONUMENTATION SYSTEM, MONUMENT NO. 6-1, 3 INCH BRASS DISK SET IN CONCRETE STAMPED "CITY OF ROCKWALL SURVEY MONUMENT", LOCATED AT THE SOUTHWEST CORNER OF VILLAGE ROAD AND A ROAD TO THE MARINA.
ELEVATION = 506.0486 (FEET) NAD 1983 ADJUSTMENT

SITE BENCHMARK
TBM "A", "X" CUT IN THE MOST NORTHERLY BOLT OF TRAFFIC SIGNAL POLE, LOCATED AT THE NORTHEAST CORNER OF VILLAGE DRIVE AND INTERSTATE HIGHWAY NO. 30.
ELEVATION = 542.57 (FEET)

EXIST. LEGEND	
—●—	CONTROL JOINT WITH CONTINUOUS REINFORCING (SEE DETAIL SHT C5)
---●---	DOWEL TYPE EXPANSION JOINT (SEE DETAIL SHT C5)
---●---	TYPICAL ISOLATION JOINT (SEE DETAIL SHT C5)
---	SAW CUT LINE (SEE NOTE "A")
[Pattern]	EXIST. 5" CONCRETE PAVEMENT (SEE DETAIL, SHT C5) (SEE NOTE BELOW)
[Pattern]	EXIST. 6" CONCRETE PAVEMENT (SEE DETAIL, SHT C5) (SEE NOTE BELOW)
[Pattern]	EXIST. 8" CONCRETE PAVEMENT (SEE DETAIL, SHT C5) (SEE NOTE BELOW)
[Pattern]	EXIST. 4-1/2" CONCRETE SIDEWALK (SEE DETAIL, SHT C5) (SEE NOTE BELOW)

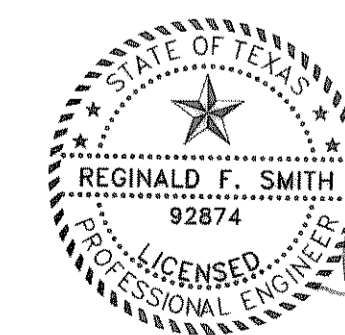
- NOTE:**
- 3000 PSI MIN. CONCRETE PAVEMENT STRENGTH WITH 5 SACK CEMENT MIN. PER CUBIC YARD OF CONCRETE MIX.
 - ALL CONSTRUCTION TO BE IN ACCORDANCE WITH NCTCOG 3RD EDITION AND CITY OF ROCKWALL STANDARDS OF DESIGN.

GRADING NOTES:

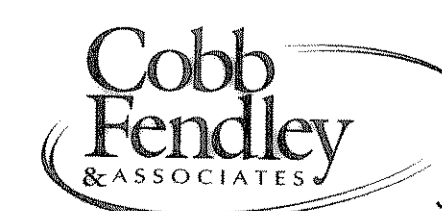
- CONTRACTOR SHALL ENSURE THAT CONSTRUCTED SLOPES AND ELEVATIONS COMPLY WITH TEXAS DEPARTMENT OF LICENSING AND REGULATION REQUIREMENTS FOR ACCESSIBILITY. GRADES SHOWN HEREON HAVE BEEN CAREFULLY SELECTED TO COMPLY WITH ACCESSIBILITY REQUIREMENTS. THE FOLLOWING SHALL BE CONSIDERED DURING CONSTRUCTION:
- CHANGES IN LEVEL AT BUILDING EXITS SHALL BE 1/4" MAXIMUM FROM FINISHED FLOOR ELEVATION.
 - ACCESSIBLE ROUTE CROSS SLOPE SHALL BE 2% MAXIMUM.
 - WHERE AN ACCESSIBLE ROUTE CHANGES DIRECTION, A 5'x5' LANDING SHALL BE PROVIDED WITH MAXIMUM 2% SLOPE IN ANY DIRECTION.
 - NO PORTION OF THE ACCESSIBLE PARKING AREA SHALL EXCEED 2% SLOPE.
 - ACCESSIBLE ROUTES MAY HAVE SLOPES UP TO 5% (SEE NOTE 6 FOR SLOPES GREATER THAN 5%).
 - ALL RAMPS SHALL BE MAXIMUM 1 VERTICAL UNIT FOR EVERY 12 HORIZONTAL UNITS (8.33%). ALL RAMPS MUST HAVE 5'x5' LANDING WITH MAXIMUM 2% SLOPE AT THE TOP AND BOTTOM. RAMP RUNS RISING MORE THAN 6 INCHES VERTICAL REQUIRE HANDRAILS.
 - THE FINISHED GRADES SHOWN ON THIS PLAN REPRESENT FINAL ELEVATIONS. CARE SHOULD BE TAKEN BY THE CONTRACTOR NOT TO INCREASE THESE FINISHED GRADES WITH LANDSCAPING OR OTHER ALTERATIONS. THE THICKNESS OF SOD, GRASS AND LANDSCAPING MATERIALS SHOULD BE DEDUCTED FROM THE FINISHED GRADE ELEVATIONS IN THESE PLANS IN ORDER TO DETERMINE THE GROUND ELEVATIONS DURING CONSTRUCTION.
 - NO SAND UNDER PAVING

NOTE "A"
EXPOSE 18" OF REINFORCING STEEL @ PROPOSED SAWED JOINT. IF NO REINFORCING STEEL EXISTS, USE HORIZONTAL DOWELS. HORIZONTAL DOWELS SHALL BE #4 BARS 24" LONG 24" C-C, DRILLED AND EMBEDDED 12" INTO THE CENTER OF EXISTING SLAB WITH "PO-ROC" OR EQUAL.

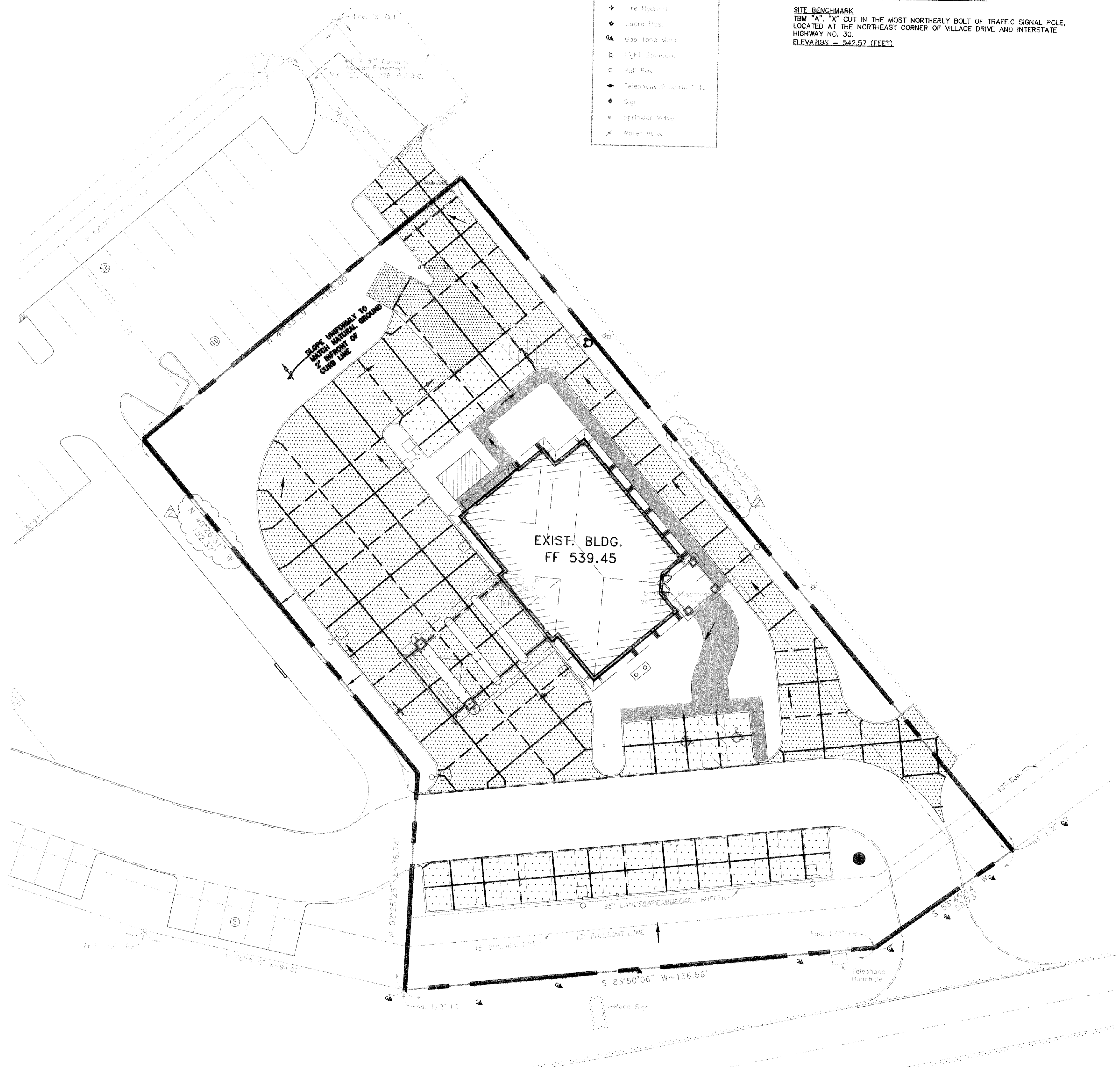
RECORD DRAWINGS



REGINALD F. SMITH
92874
LICENSED PROFESSIONAL ENGINEER



PLANS PREPARED BY
COBB, FENDLEY & ASSOC. INC.
10845 ESTATE LANE, SUITE 308
DALLAS, TEXAS 75238 (214) 349-4300
JOB NO. 0607118 CFA DWG. NO. 060711800C3



CFA, Inc. D:\CFA\2006\07118\coba\paving\records\CA0711800C3.dwg 2006-07-20 09:11:2007 15.41 494618