

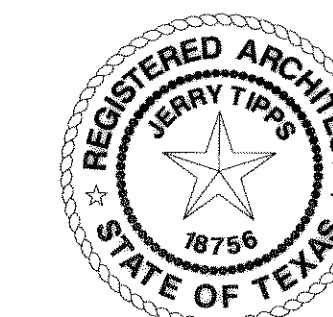


COLONIAL BANK

ROCKWALL
BRANCH

1-30 W & LAGUNA DR.
ROCKWALL, TX 75087

3500L_WESTERN



REVISIONS

NO.	DESCRIPTION	DATE
	BID/PERMIT ISSUE	7-16-07
	CITY COMMENTS	9-20-07
	CITY COMMENTS	12-20-07
	DIMENSION CONTROL	01-02-08
	AS-BUILT	07-02-08

DATE ISSUED: 04-13-07

REVIEWED BY: RR

DRAWN BY: MH

DESIGNED BY: RR/MH

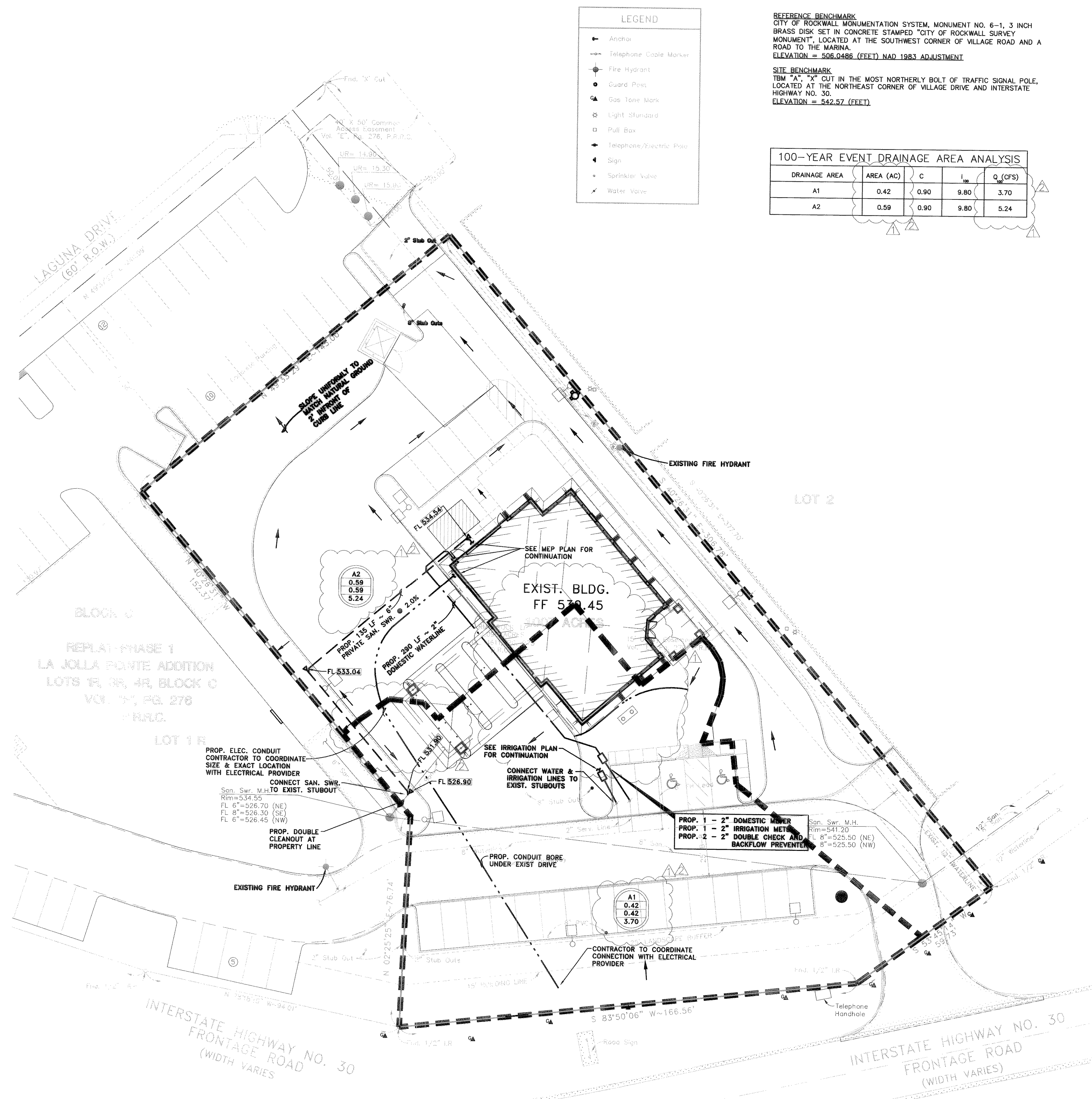
AEP PROJECT NUMBER
512-6041-021

© 2006 REYNOLDS, SMITH AND HILLS INC.

UNDERGROUND
PLAN

SHEET NUMBER

C2



LEGEND

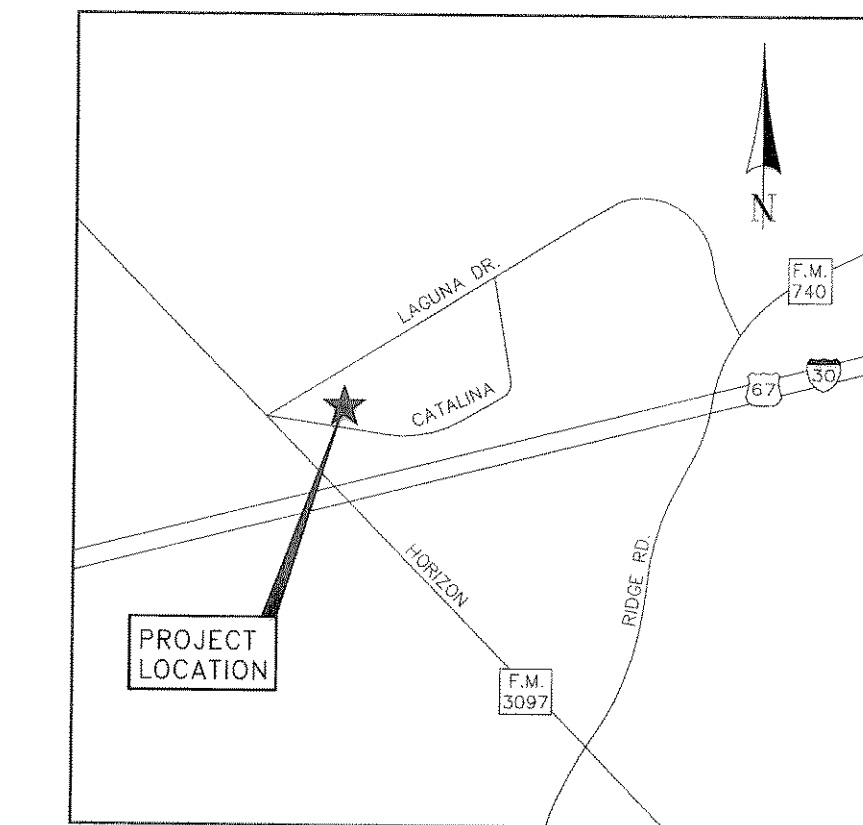
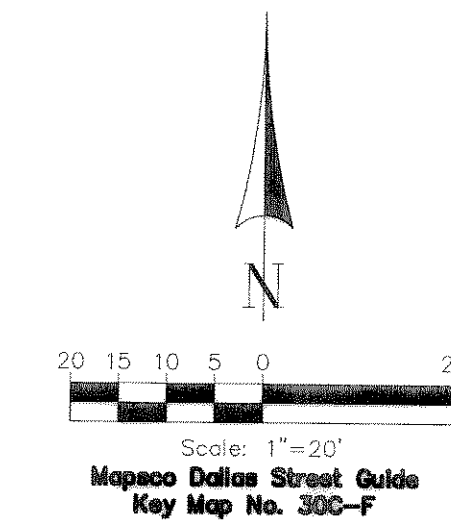
- Anchor
- Telephone Cable Marker
- Fire Hydrant
- Guard Post
- ⊙ Gas Tone Mark
- ⊙ Light Standard
- Pull Box
- ⊙ Telephone/Electric Pole
- ⊙ Sign
- ⊙ Sprinkler Valve
- ⊙ Water Valve

REFERENCE BENCHMARK
CITY OF ROCKWALL MONUMENTATION SYSTEM, MONUMENT NO. 6-1, 3 INCH BRASS DISK SET IN CONCRETE STAMPED "CITY OF ROCKWALL SURVEY MONUMENT", LOCATED AT THE SOUTHWEST CORNER OF VILLAGE ROAD AND A ROAD TO THE MARINA.
ELEVATION = 506.0486 (FEET) NAD 1983 ADJUSTMENT

SITE BENCHMARK
TBM "A", "X" CUT IN THE MOST NORTHERLY BOLT OF TRAFFIC SIGNAL POLE, LOCATED AT THE NORTHEAST CORNER OF VILLAGE DRIVE AND INTERSTATE HIGHWAY NO. 30.
ELEVATION = 542.57 (FEET)

100-YEAR EVENT DRAINAGE AREA ANALYSIS

DRAINAGE AREA	AREA (AC)	C	I ₁₀₀	Q (CFS)
A1	0.42	0.90	9.80	3.70
A2	0.59	0.90	9.80	5.24



EXIST. LEGEND

- EXIST. SANITARY SEWER LINE
- EXIST. WATER LINE
- ⊙ EXIST. 24" INLET (UNLESS NOTED)
- TG 100.00 EXIST. TOP OF GRATE INLET
- FF 100.00 EXIST. FINISHED FLOOR ELEVATION
- FL 100.00 EXIST. FLOW LINE ELEVATION
- TR 100.00 EXIST. TOP OF RIM ELEVATION
- TO 00.00 EXIST. TOP OF JUNCT. BOX ELEVATION
- ▷ EXIST. CLEAN OUT
- dr EXIST. DRAINAGE AREA NUMBER
- ac+ ACREAGE IN DRAINAGE AREA
- cfs+ CUMULATIVE DRAINAGE AREA
- 100 YEAR FLOW RATE

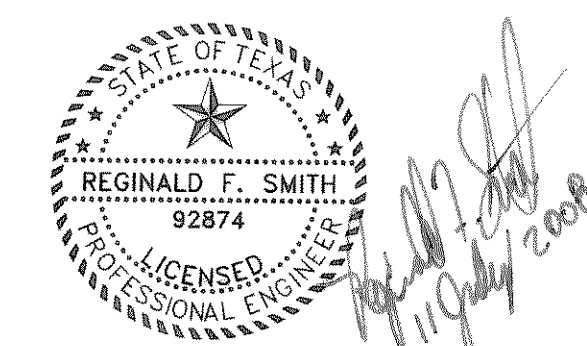
PIPING MATERIAL SCHEDULE

WATER LINES	
DIAMETER SIZE	MATERIALS
3/4" TO 1-1/4"	TYPE "K" COPPER
1-1/2" TO 3-1/2"	PVC SCHEDULE 40
4" OR GREATER	AWWA C-900 PVC - CLASS 200

SANITARY SEWER LINES	
DIAMETER SIZE	MATERIAL
ALL	PVC SDR 26

- ### NOTES:
- MATERIALS SHALL BE IN ACCORDANCE WITH APPLICABLE TESTING PROCEDURES. SEE UTILITY NOTES THIS SET.
 - MATERIAL TYPE SHALL BE PER TABLE UNLESS SPECIFIED OTHERWISE IN PLANS.
 - ALL CONSTRUCTION TO BE IN ACCORDANCE WITH NCTCOG 3RD EDITION AND CITY OF ROCKWALL STANDARDS OF DESIGN.
 - ALL WATERLINE BEDDING & BACKFILL SHALL FOLLOW CLASS B-4 EMBEDMENT FROM NCTCOG & CITY OF ROCKWALL STANDARDS.
 - ALL SANITARY SEWER BEDDING & BACKFILL SHALL FOLLOW CLASS B-1 EMBEDMENT FROM NCTCOG & CITY OF ROCKWALL STANDARDS.

RECORD DRAWINGS



PLANS PREPARED BY
Cobb Fendley & ASSOCIATES
COBB, FENDLEY & ASSOC. INC.
10845 ESTATE LANE, SUITE 308
DALLAS, TEXAS 75238 (214) 349-4300
JOB NO. 0607118 CFA DWG. NO. 060711800C2