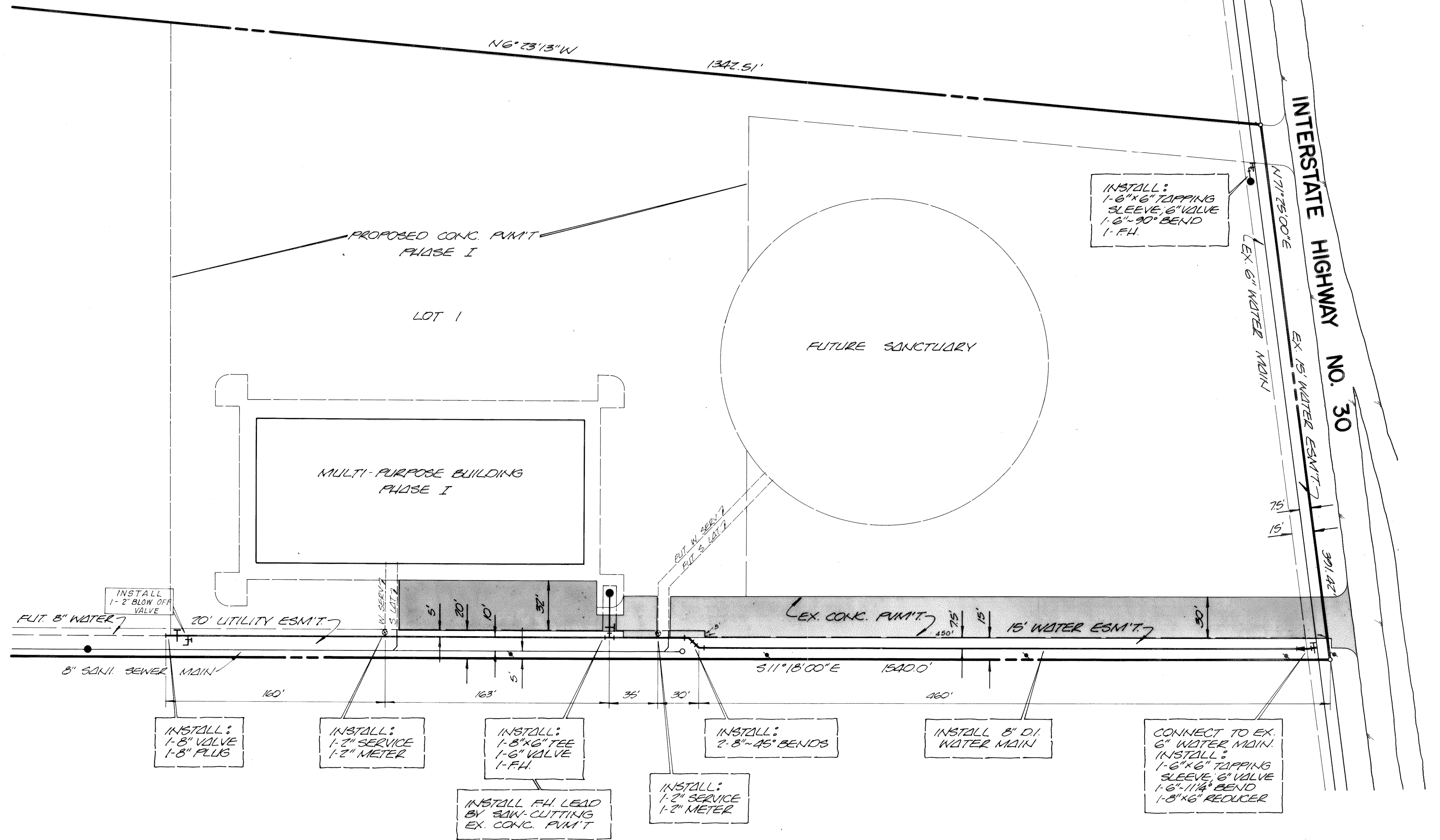


F.P. HUGHES



INSTALL:
1-2" BLOW OFF
VALVE

INSTALL:
1-8" VALVE
1-8" PLUS

INSTALL:
1-2" SERVICE
1-2" METER

INSTALL:
1-8" X 6" TEE
1-6" VALVE
1" F.H.

INSTALL F.H. LEAD
BY BANK-CUTTING
EX. CONC. PUM'T.

INSTALL:
1-2" SERVICE
1-2" METER

INSTALL:
2-8"-45° BENDS

INSTALL 8" O.I.
WATER MAIN

CONNECT TO EX.
6" WATER MAIN.
INSTALL:
1-6" X 6" TAPPING
SLEEVE, 6" VALVE
1-6"-1 1/4" BEND
1-8" X 6" REDUCER

INSTALL:
1-6" X 6" TAPPING
SLEEVE, 6" VALVE
1-6"-90° BEND
1" F.H.

BENCH MARK:
TOP RIM OF MANHOLE
@ 0100 ON SURVEY LINE
ELEV. = 534.50

JULIAN V. JONES, TRUSTEE
RAYMOND CAMERON

WATER SYSTEM						
ROCKWALL CHURCH ON THE ROCK INC.						
WATER UTILITY DEPART.						
CITY OF ROCKWALL, TEXAS						
DESIGN	DRAWN	DATE	SCALE	NOTES	FILE	NO.
D.A.T. INC.		4-82	1" = 40'	AP		2/4