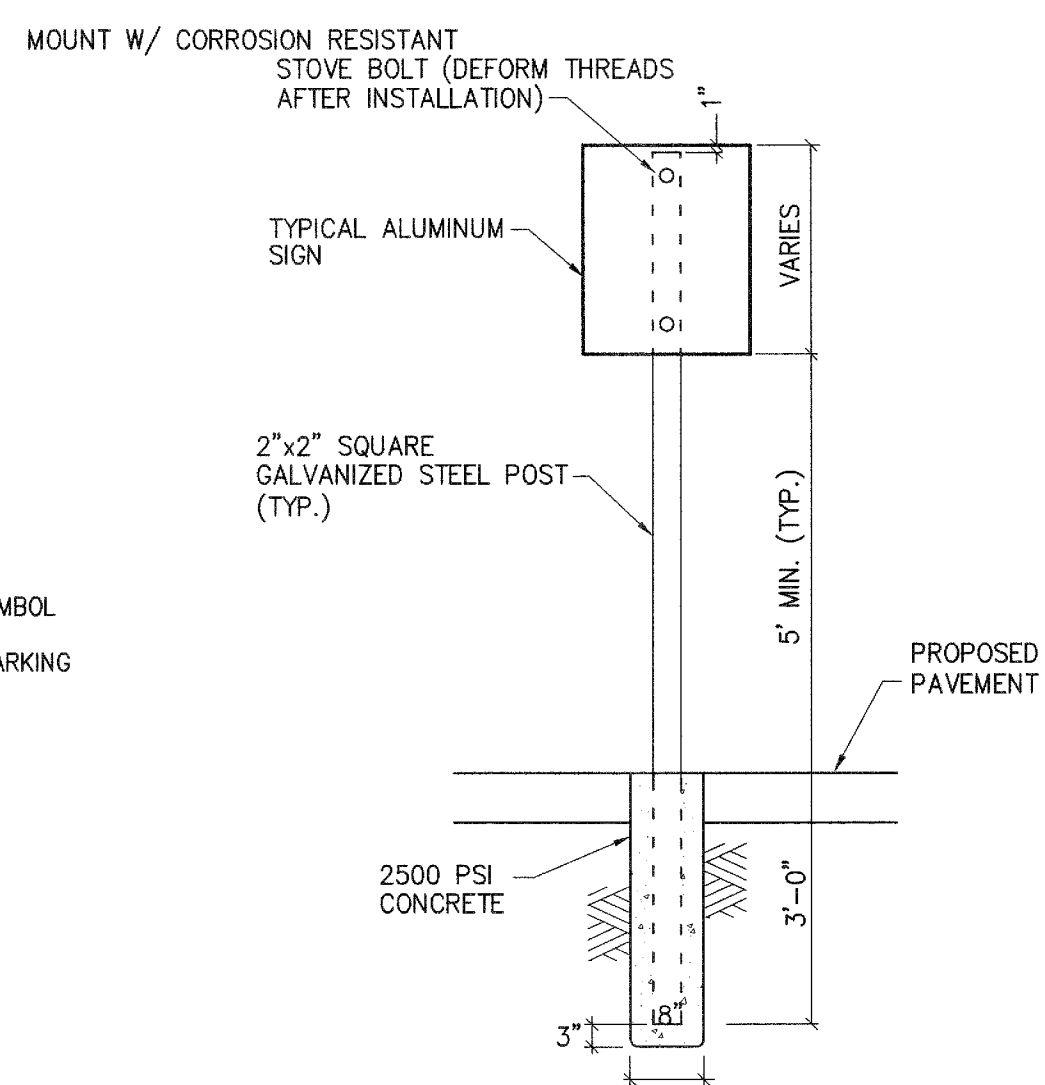


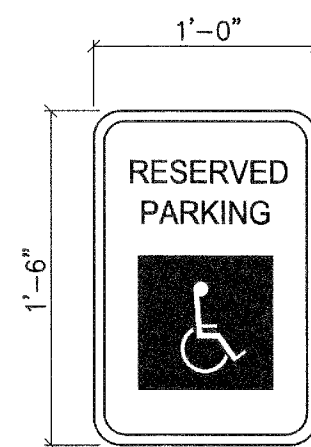
HANDICAP STRIPING DETAIL

N.T.S.



TYPICAL SIGNAGE MOUNTING DETAIL

N.T.S.



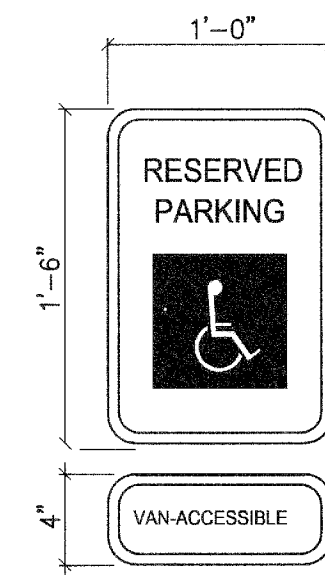
COLORS:
LETTERS AND BORDER- GREEN
SYMBOL ON BLUE BACKGROUND
SIGN BACKGROUND-WHITE

NOTES:

1. SPACING BETWEEN LETTERS, COLORS, AND PROCESSES SHALL CONFORM STANDARD HIGHWAY AND SIGN DESIGNS FOR TEXAS.
2. INSTALL 2' BACK OF CURB OR WHEEL STOPS, UNLESS OTHERWISE INDICATED.
3. VAN-ACCESSIBLE SIGNAGE ON VAN SPACES ONLY.

TYPICAL SIGNAGE DETAIL TYPE I

N.T.S.



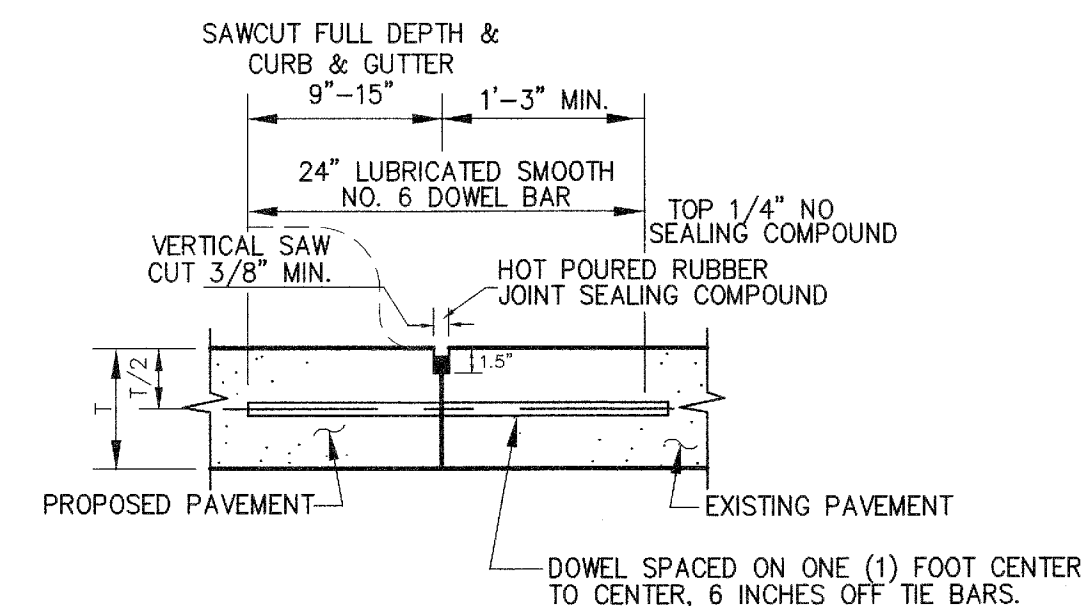
COLORS:
LETTERS AND BORDER- GREEN
SYMBOL ON BLUE BACKGROUND
SIGN BACKGROUND-WHITE

NOTES:

1. SPACING BETWEEN LETTERS, COLORS, AND PROCESSES SHALL CONFORM STANDARD HIGHWAY AND SIGN DESIGNS FOR TEXAS.
2. INSTALL 2' BACK OF CURB OR WHEEL STOPS, UNLESS OTHERWISE INDICATED.
3. VAN-ACCESSIBLE SIGNAGE ON VAN SPACES ONLY.

TYPICAL SIGNAGE DETAIL TYPE II

N.T.S.

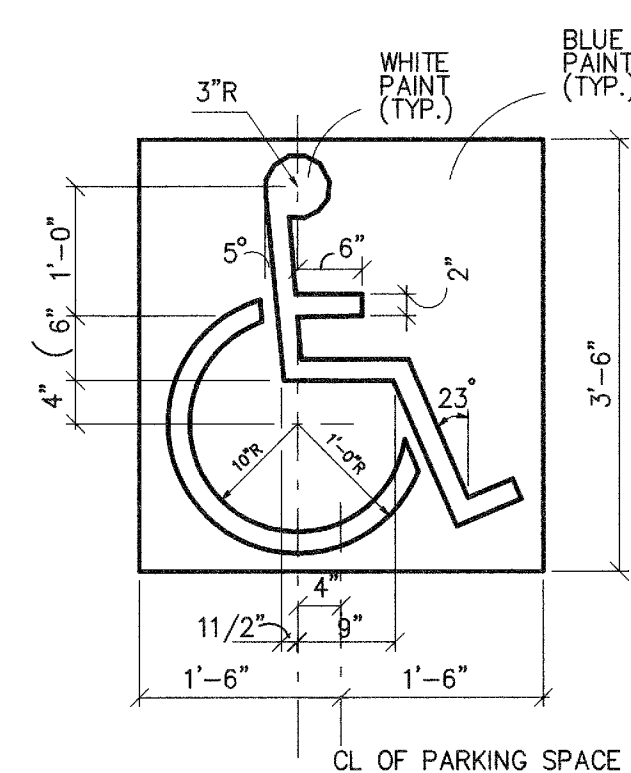


NOTE:
DOWELS AND REINFORCING BARS SHALL BE SUPPORTED BY AN APPROVED DEVICE.

LONGITUDINAL BUTT JOINT

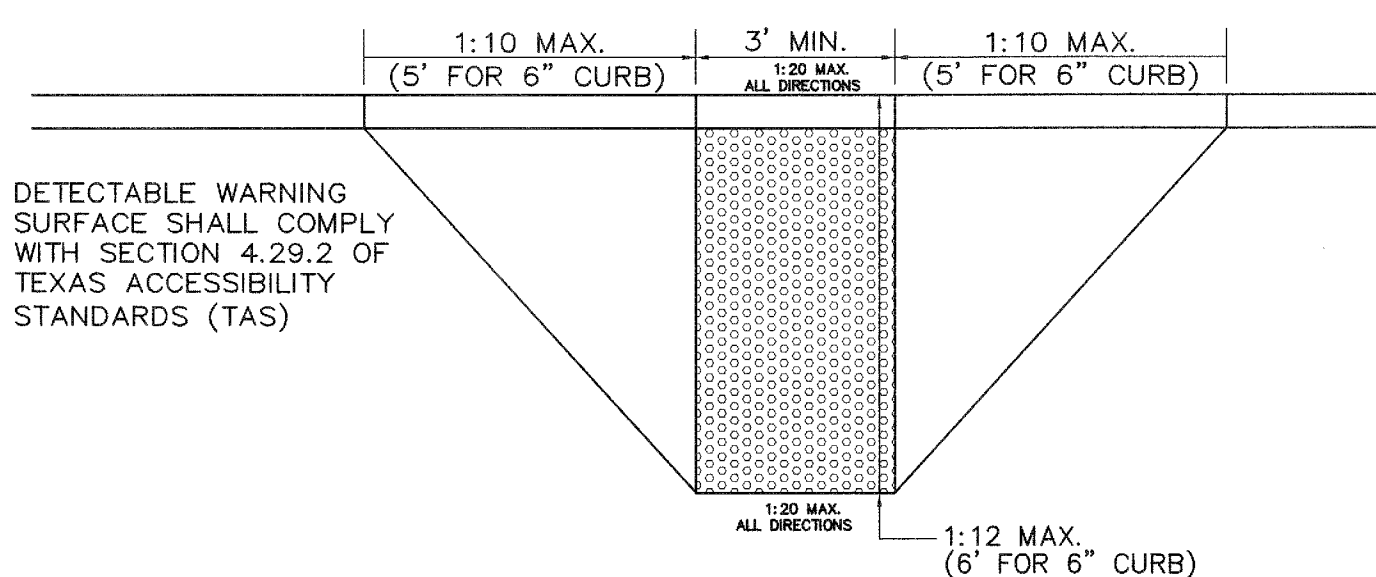
N.T.S.

1. NO. 5 SMOOTH DOWEL BAR MAY BE USED IN 5 INCH AND 6 INCH PAVEMENT THICKNESS.
2. LONGITUDINAL BUTT CONSTRUCTION MAY BE UTILIZED IN PLACE OF LONGITUDINAL HINGED (KEYWAY) JOINT AT CONTRACTORS OPTION.
3. DOWEL BARS SHALL BE DRILLED INTO PAVEMENT HORIZONTALLY BY USE OF A MECHANICAL RIG.
4. DRILLED BY HAND IS NOT ACCEPTABLE, PUSHING DOWEL BARS INTO GREEN CONCRETE NOT ACCEPTABLE.



HANDICAP SYMBOL DETAIL

N.T.S.

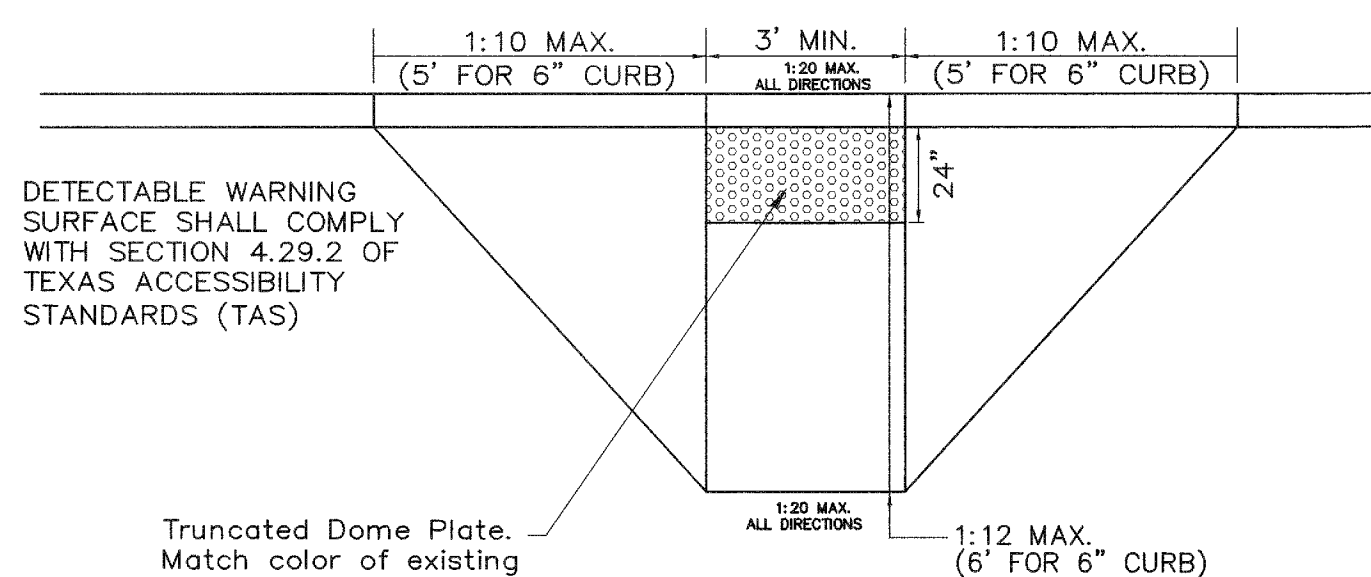


DETECTABLE WARNING SURFACE SHALL COMPLY WITH SECTION 4.29.2 OF TEXAS ACCESSIBILITY STANDARDS (TAS)

NOTE:
THIS PLAN INCLUDES MOST OF THE MAJOR ITEMS RELATED TO CURB RAMPS. REFER TO THE TEXAS ACCESSIBILITY STANDARDS FOR COMPLETE INFORMATION.

HANDICAP RAMP DETAIL (PRIVATE USE ONLY)

N.T.S.



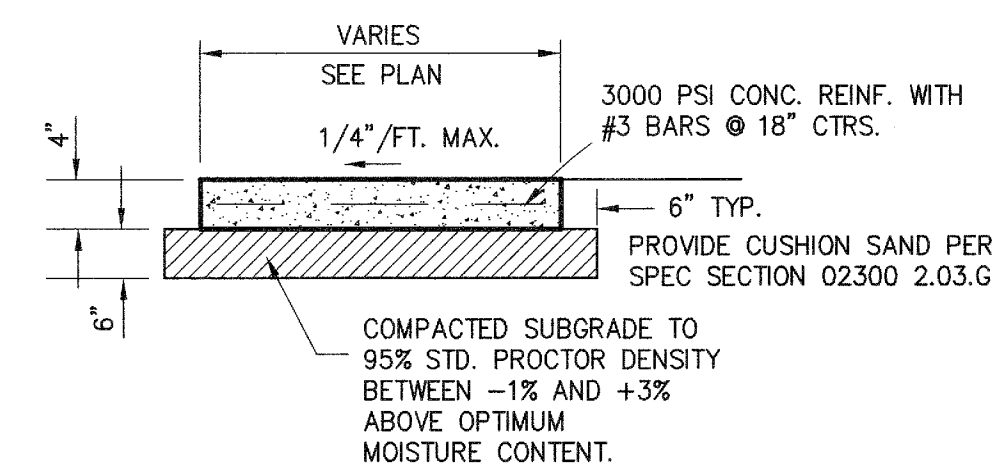
DETECTABLE WARNING SURFACE SHALL COMPLY WITH SECTION 4.29.2 OF TEXAS ACCESSIBILITY STANDARDS (TAS)

Truncated Dome Plate. Match color of existing ramps.

NOTE:
THIS PLAN INCLUDES MOST OF THE MAJOR ITEMS RELATED TO CURB RAMPS. REFER TO THE TEXAS ACCESSIBILITY STANDARDS FOR COMPLETE INFORMATION.

HANDICAP RAMP DETAIL (R.O.W. USE ONLY)

N.T.S.



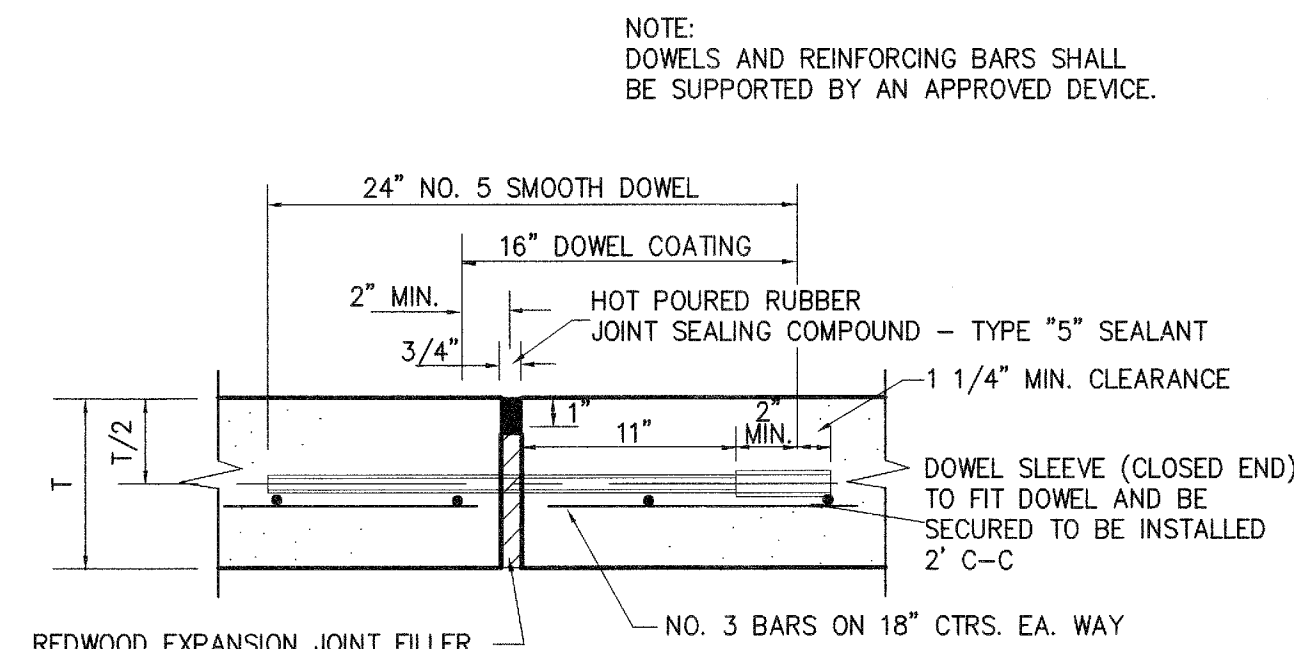
SIDEWALK DETAIL

N.T.S.

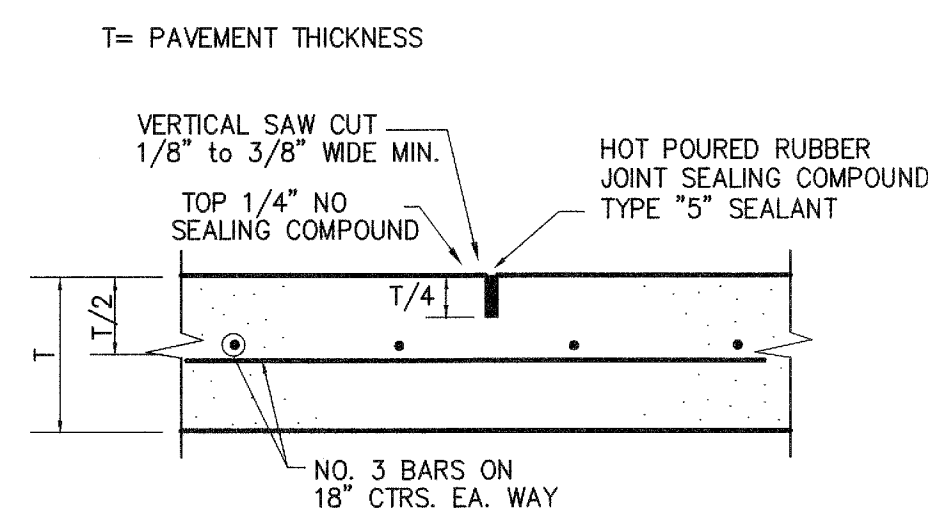
AS-BUILT DRAWINGS

To the best of our knowledge, Cross Engineering Consultants, Inc., hereby states that this plan is As-Built. The information provided is based on surveying at the site and information provided by the contractor.

JON DAVID CROSS, P.E.
DATE: 2/25/2012

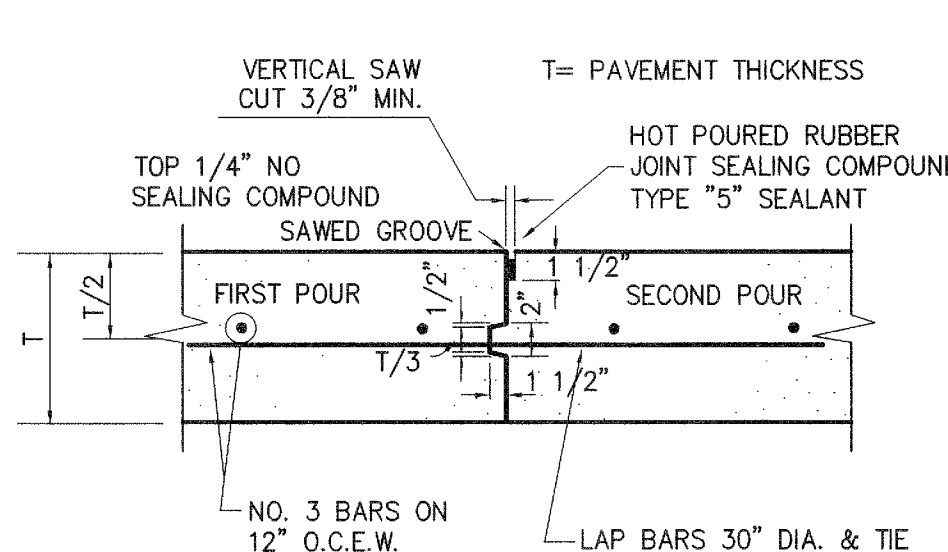


EXPANSION JOINT

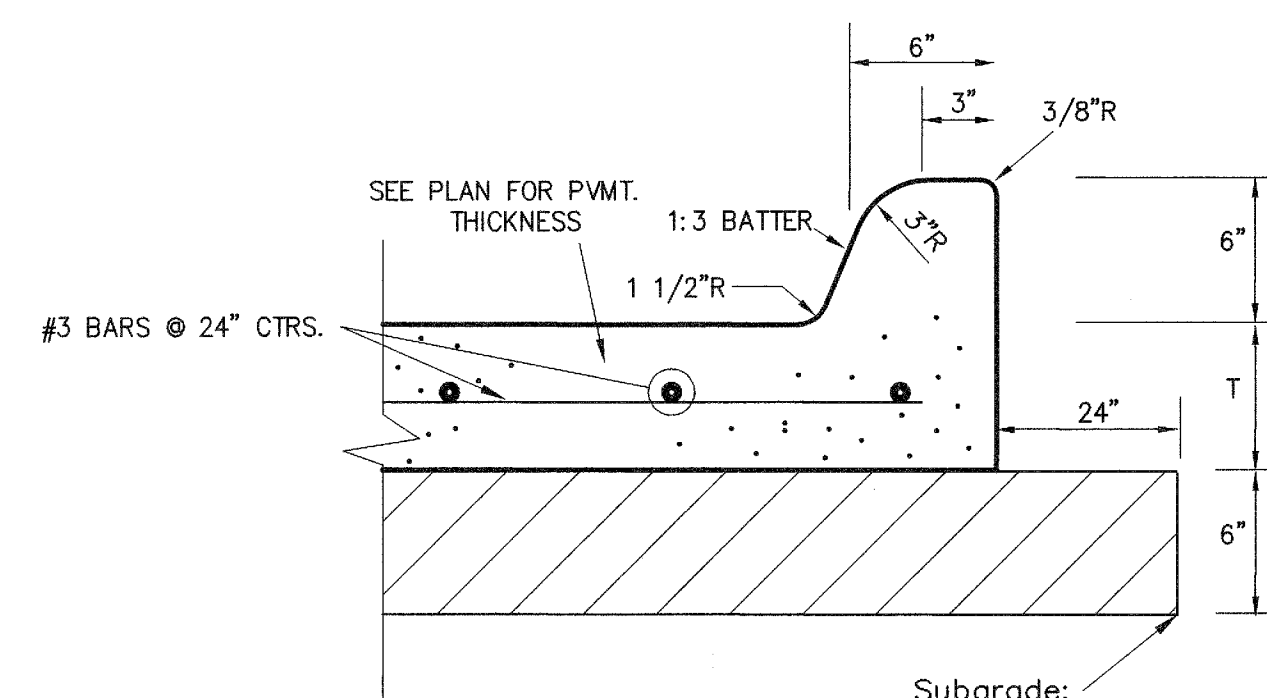


SAWED DUMMY (CONTROL) JOINT

MAXIMUM SPACING IS 15' CTRS. (TYP.)



CONSTRUCTION JOINT

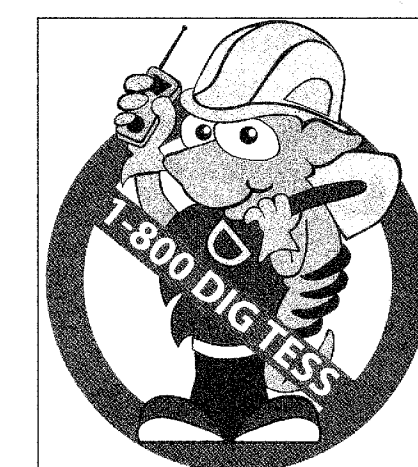


PAVEMENT SECTION WITH CURB

Subgrade:
6" Compacted Subgrade minimum 95% Standard Proctor Density, 0 to +4 Points Above Optimum Moisture Content.

Responsibility Note:
"ALL RESPONSIBILITY FOR ADEQUACY OF DESIGN REMAINS WITH THE DESIGN ENGINEER, THE CITY OF ROCKWALL, IN REVIEWING AND RELEASING PLANS FOR CONSTRUCTION, ASSUMES NO RESPONSIBILITY FOR ADEQUACY OR ACCURACY OF DESIGN."

STOP!
CALL BEFORE YOU DIG



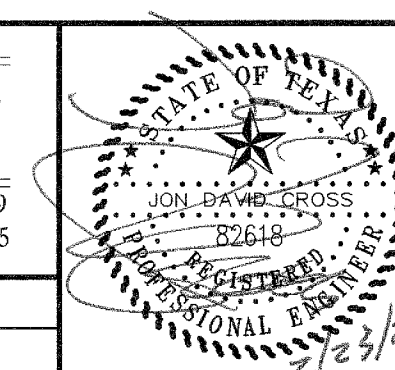
(@ least 72 hours prior to digging)

Issue Dates:	Revisions:	Date:
1 4/22/11	1 Water	6/14/11
2	2 Grd & SW	8/31/11
3	3	
4	4	
5	5	
6	6	

CROSS ENGINEERING CONSULTANTS

106 W. Louisiana Street • McKinney, Texas 75069
972.562.4409 • Texas P.E. Firm No. F-5935

Drawn By: C.E.C.I. Checked By: J.D.C. Scale: NONE



DETAILS
CHRISTIAN BROTHERS - ROCKWALL
Rockwall Market Center South Addition
CITY OF ROCKWALL, TEXAS

Sheet No.
C8
of 8
Project No.
11014

CHRISTIAN BROTHERS AUTOMOTIVE