

STA. 0+00
CONNECT TO EXIST. MANHOLE
REMOVE EXIST. 8" STUB-OUT
TOP = 559.77
F.L. 547.51

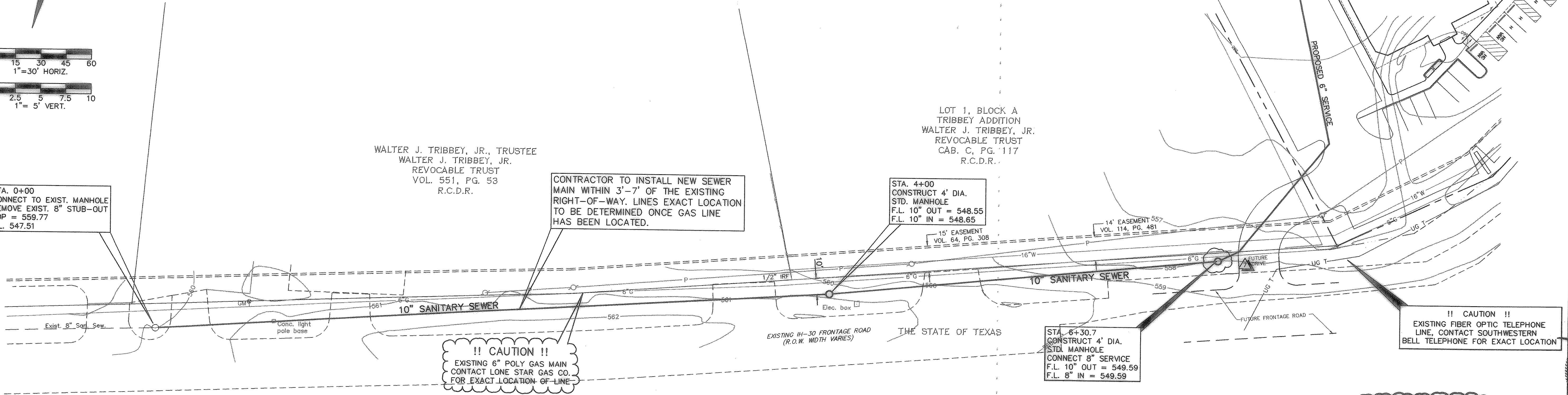
WALTER J. TRIBBEY, JR., TRUSTEE
WALTER J. TRIBBEY, JR.
REVOCABLE TRUST
VOL. 551, PG. 53
R.C.D.R.

CONTRACTOR TO INSTALL NEW SEWER
MAIN WITHIN 3'-7' OF THE EXISTING
RIGHT-OF-WAY. LINES EXACT LOCATION
TO BE DETERMINED ONCE GAS LINE
HAS BEEN LOCATED.

STA. 4+00
CONSTRUCT 4' DIA.
STD. MANHOLE
F.L. 10" OUT = 548.55
F.L. 10" IN = 548.65

STA. 6+30.7
CONSTRUCT 4' DIA.
STD. MANHOLE
CONNECT 8" SERVICE
F.L. 10" OUT = 549.59
F.L. 8" IN = 549.59

REMAINDER OF 72.243 ACRES
740/3097 LIMITED PARTNERSHIP
VOL. 620, PG. 69-88
R.C.D.R.

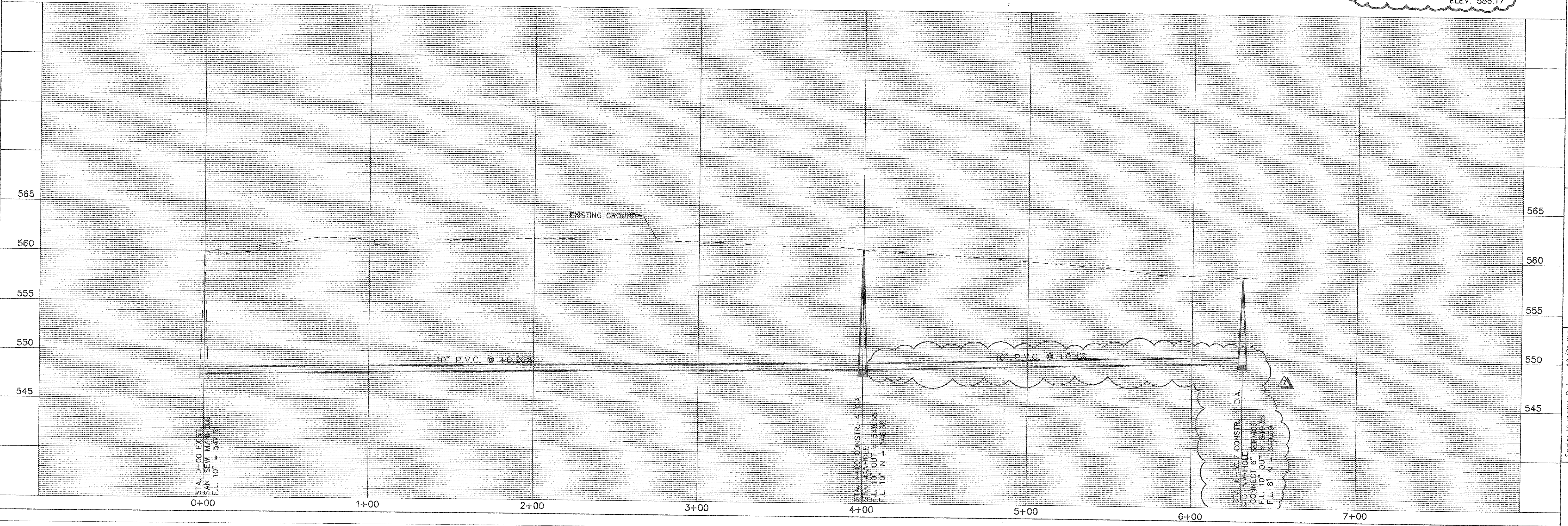


!! CAUTION !!
EXISTING 6" POLY GAS MAIN
CONTACT LONE STAR GAS CO.
FOR EXACT LOCATION OF LINE

!! CAUTION !!
EXISTING FIBER OPTIC TELEPHONE
LINE, CONTACT SOUTHWESTERN
BELL TELEPHONE FOR EXACT LOCATION

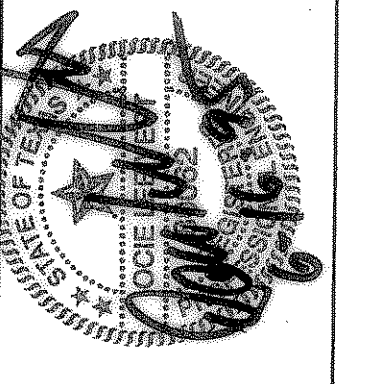
NOTE: OFFSITE SANITARY SEWER
TO BE BID SEPARATELY.

BENCHMARK:
City of Rockwall Monument No. 6.
ELEV. 556.17

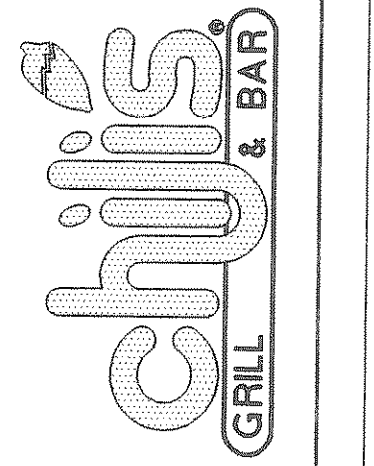


NO.	REVISION	BY	DATE
7	MOVEMENT OF MANHOLE AND CHANGE IN FLOWLINES	OLV.	08/14/94
6	PER PARKWAY CONSTRUCTION CONTRACTOR SURVEY DATA	OLV.	02/07/94
5	ADDED BENCHMARK, AND MOVE MANHOLE	OLV.	02/07/94
4	REVISE PARKING IN FRONT OF BLDG.	S.E.W.	10/29/94
3	ADDED BID NOTE	S.E.W.	10/29/94
2			
1			

Bury+Pittman
Consulting Engineers and Surveyors
Dallas, Texas Tel 214/991-0011 Fax 214/991-0274
© Copyright 1994 Bury & Pittman, Inc.



CHLI'S IN ROCKWALL, TEXAS
OFFSITE SANITARY SEWER



Scale: AS SHOWN Date: 10/21/94
Disk: Drawn by: A.B.C.
Xref: NONE
File: OFFSAN.DWG
Approved by: S.E.W.
Project No.: 3002-05