

CONTACTS

BURY & PITTMAN CONSULTING ENGINEERS AND SURVEYORS
5310 Harvest Hill, Suite 100
Dallas, Texas 75230
(214) 991-0011
Susan Weaver, P.E.

LONE STAR GAS CO.
P.O. Box 461965
Garland, Texas 75046
(214) 487-3881
Business Development - Dinah Wood

SOUTHWESTERN BELL TELEPHONE COMPANY
1255 Tavaros
Dallas, Texas 75218
(214) 320-6437
Engineering - Dale Ingersoll

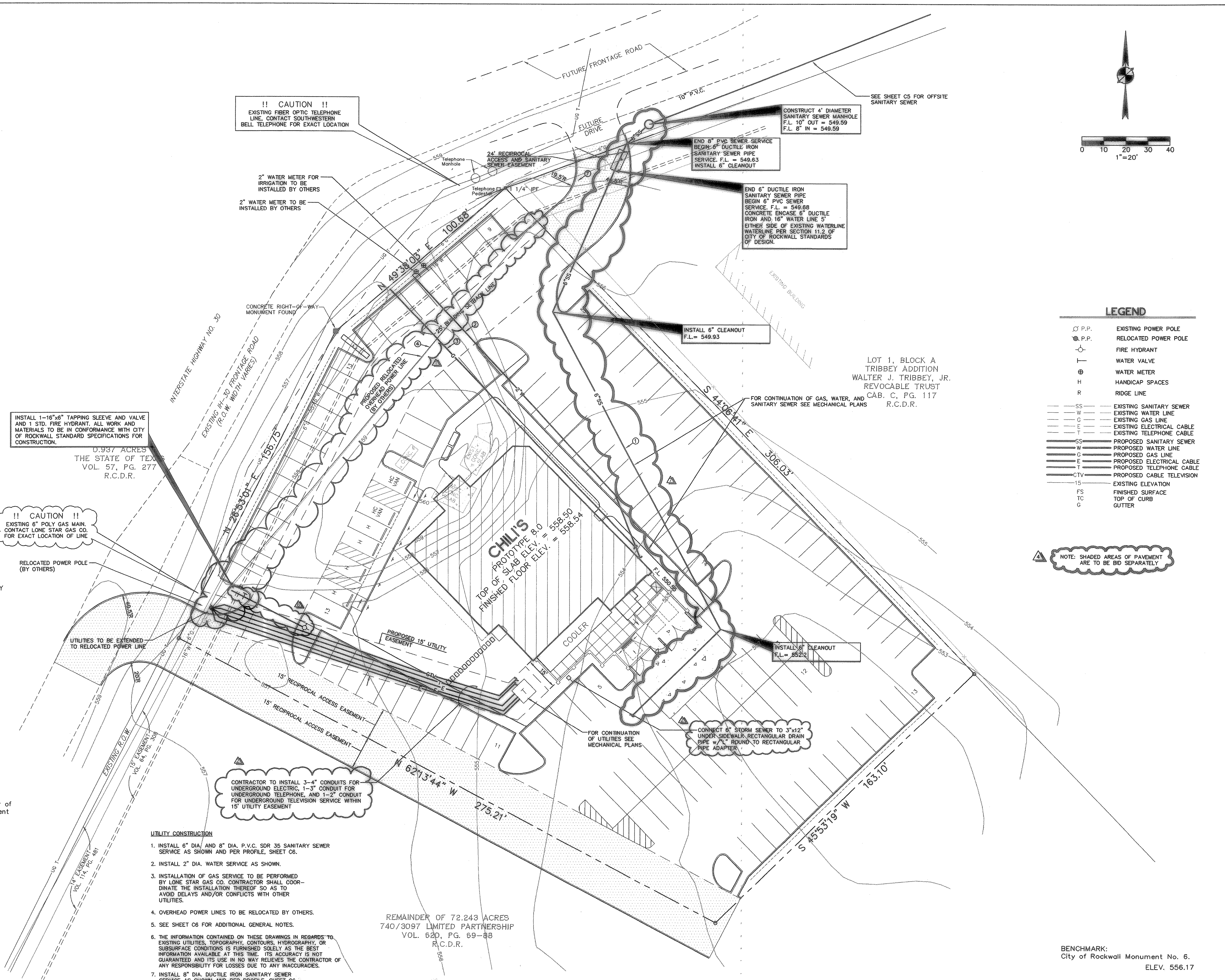
TU ELECTRIC COMPANY
1545 High Point
Mesquite, Texas 75149
(214) 554-1414
Brian Hughes

MISSION CABLE
P.O. Box 1689
Rockwall, Texas 75087
(214) 771-5014
Paulette Evans

CITY OF ROCKWALL
205 W. Rusk
Rockwall, Texas 75087
(214) 771-7700

ENGINEERING DEPARTMENT
Dub Douphrate - City Engineer/Director of Community Development
Bruce Hanby - Engineering Technician

PLANNING AND DEVELOPMENT
PLANNING RESOURCES GROUP
6900 Anderson Blvd., Suite 104A
Ft. Worth, Texas 76120
(817) 457-1107
Dan Boutwell - Planner



- UTILITY CONSTRUCTION**
- INSTALL 6" DIA. AND 8" DIA. P.V.C. SDR 35 SANITARY SEWER SERVICE AS SHOWN AND PER PROFILE, SHEET C6.
 - INSTALL 2" DIA. WATER SERVICE AS SHOWN.
 - INSTALLATION OF GAS SERVICE TO BE PERFORMED BY LONE STAR GAS CO. CONTRACTOR SHALL COORDINATE THE INSTALLATION THEREOF SO AS TO AVOID DELAYS AND/OR CONFLICTS WITH OTHER UTILITIES.
 - OVERHEAD POWER LINES TO BE RELOCATED BY OTHERS.
 - SEE SHEET C6 FOR ADDITIONAL GENERAL NOTES.
 - THE INFORMATION CONTAINED ON THESE DRAWINGS IN REGARDS TO EXISTING UTILITIES, TOPOGRAPHY, CONTOURS, HYDROGRAPHY, OR SUBSURFACE CONDITIONS IS FURNISHED SOLELY AS THE BEST INFORMATION AVAILABLE AT THIS TIME. ITS ACCURACY IS NOT GUARANTEED AND ITS USE IN NO WAY RELIEVES THE CONTRACTOR OF ANY RESPONSIBILITY FOR LOSSES DUE TO ANY INACCURACIES.
 - INSTALL 8" DIA. DUCTILE IRON SANITARY SEWER SERVICE AS SHOWN AND PER PROFILE, SHEET C6.

REMAINDER OF 72.243 ACRES
740/3097 LIMITED PARTNERSHIP
VOL. 620, PG. 69-88
R.C.D.R.

LEGEND

○ P.P.	EXISTING POWER POLE
● P.P.	RELOCATED POWER POLE
○	FIRE HYDRANT
+	WATER VALVE
⊗	WATER METER
H	HANDICAP SPACES
R	RIDGE LINE
---	EXISTING SANITARY SEWER
---	EXISTING WATER LINE
---	EXISTING GAS LINE
---	EXISTING ELECTRICAL CABLE
---	EXISTING TELEPHONE CABLE
---	PROPOSED SANITARY SEWER
---	PROPOSED WATER LINE
---	PROPOSED GAS LINE
---	PROPOSED ELECTRICAL CABLE
---	PROPOSED TELEPHONE CABLE
---	PROPOSED CABLE TELEVISION
15	EXISTING ELEVATION
FS	FINISHED SURFACE
TC	TOP OF CURB
G	GUTTER

NOTE: SHADED AREAS OF PAVEMENT ARE TO BE BID SEPARATELY

7	MOVE SAN. SEWER M.H., LINE SIZE & FLOWLINES PER	OL.V.	10/21/94
6	PARKWAY CONSTRUCTION CONTRACTOR SURVEY DATA	OL.V.	10/21/94
5	MOVE FIRE HYDRANT, AND SANITARY SEWER M.H.	S.E.W.	12/20/94
4	REUSE PARKING IN FRONT OF BLDG.	S.E.W.	12/21/94
3	ADDED BID NOTE	S.E.W.	11/29/94
2	EXT. GAS, SANITARY SEWER SERVICE	S.E.W.	11/23/94
1	EXT. GAS, REVISED TELE. CONDUIT, 5TH SEWER NOTE	S.E.W.	10/27/94
	REUSE PROPOSED POWER LINE LOCATION	BY	DATE
		NO.	REVISION

Bury+Pittman
Consulting Engineers and Surveyors
Dallas, Texas 75241-9901 Fax 214/991-0070
© Copyright 1995 Bury & Pittman, Inc.

CHIL'S IN ROCKWALL, TEXAS

UTILITY PLAN

chil's
GRILL & BAR

Scale: 1" = 20' Date: 10/21/94
Disk: Drawn by: A.B.C.
Xref: NONE
File: 00205UTADWG
Approved by: S.E.W.
Project No.: 3002-05

SHEET
C4
OF 7

BENCHMARK:
City of Rockwall Monument No. 6.
ELEV. 556.17