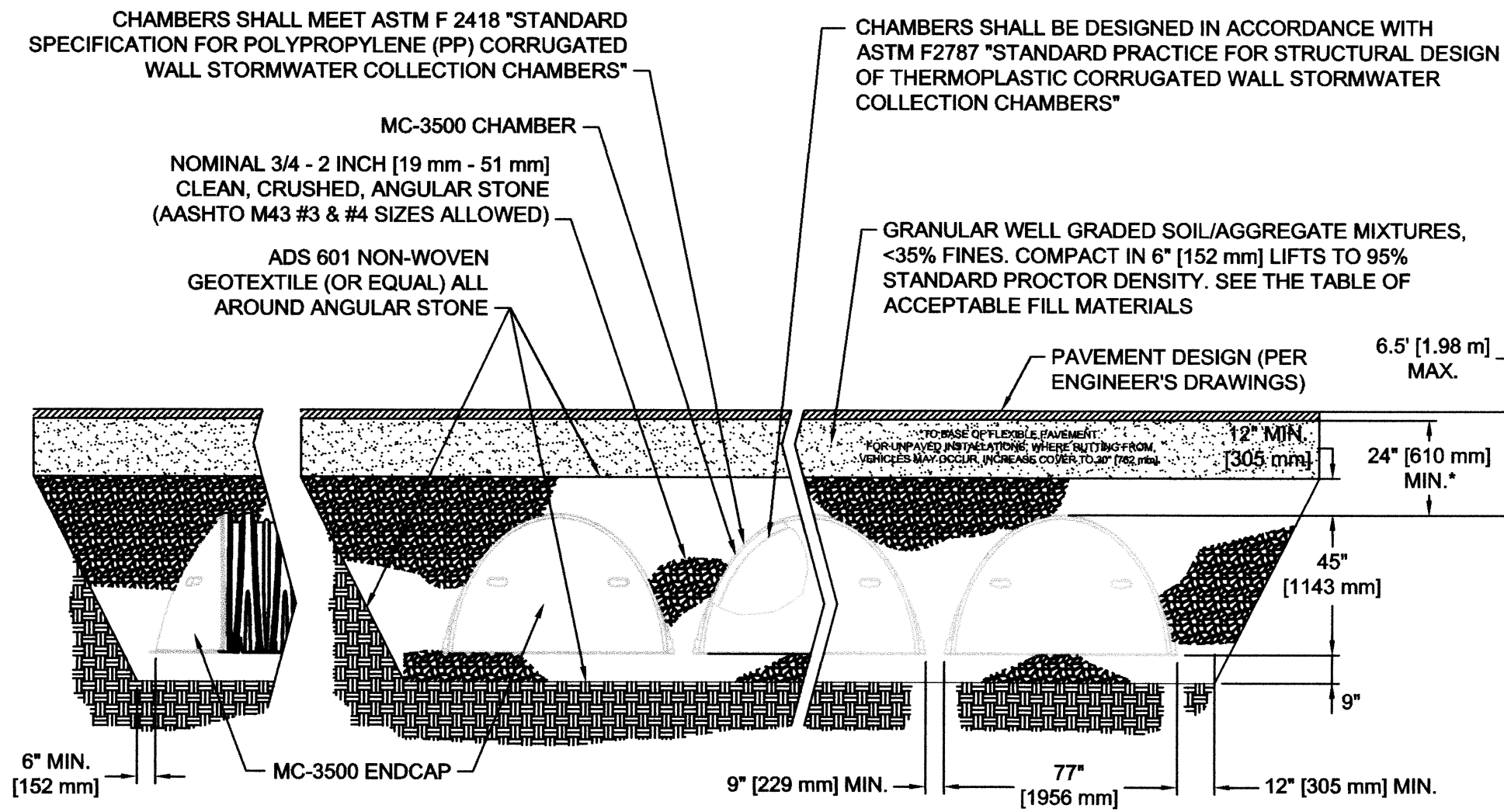


MC-3500 STORMWATER CHAMBER SPECIFICATIONS

PERIMETER STONE MUST ALWAYS BE BROUGHT UP EVENLY WITH BACKFILL OF BED. PERIMETER STONE MUST EXTEND HORIZONTALLY TO THE EXCAVATION WALL FOR BOTH STRAIGHT OR SLOPED SIDEWALLS.

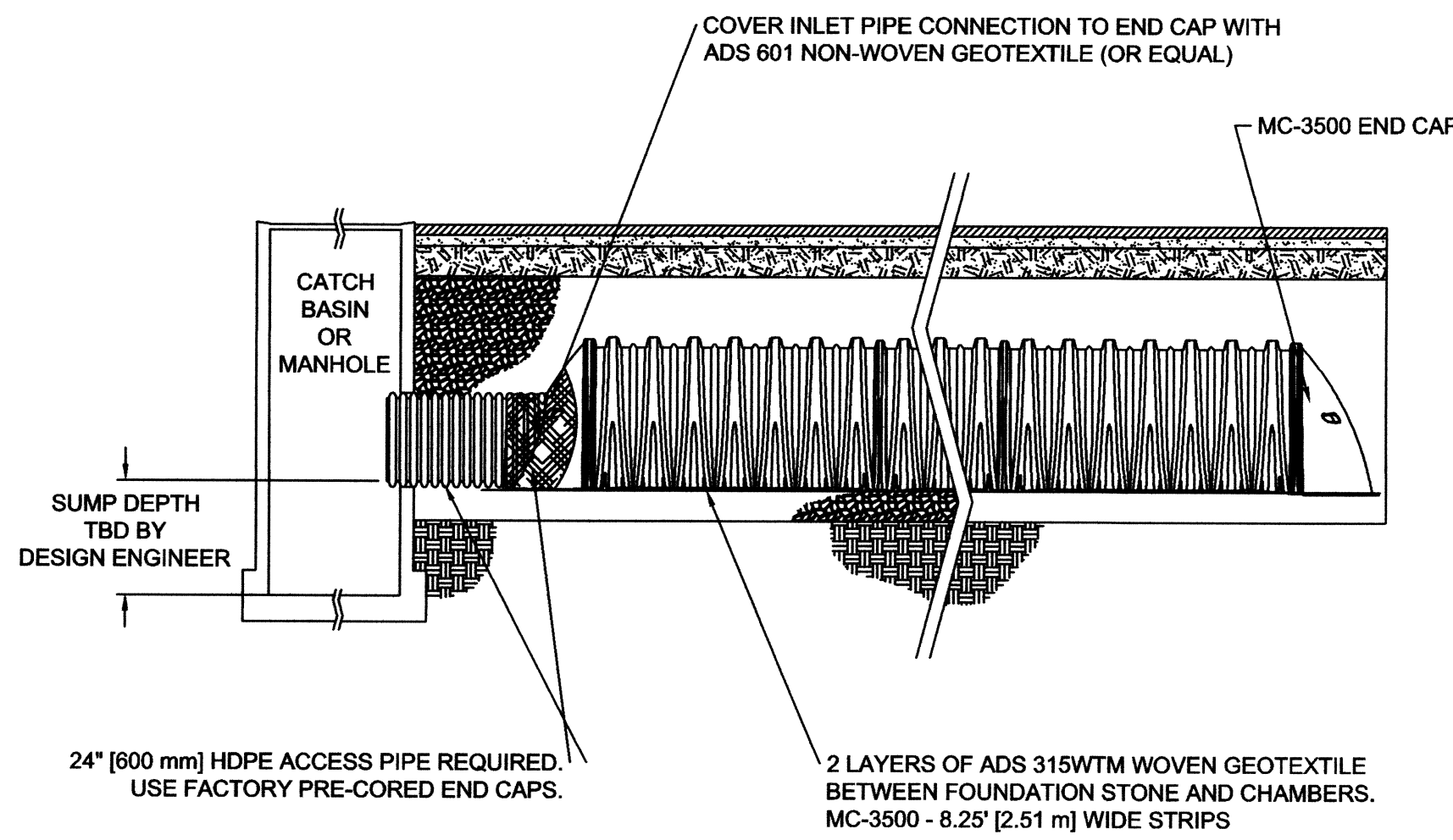


TYPICAL CROSS SECTION

THE INSTALLED CHAMBER SYSTEM SHALL PROVIDE THE LOAD FACTORS SPECIFIED IN THE AASHTO LRFD BRIDGE DESIGN SPECIFICATIONS SECTION 12.12 FOR EARTH AND LIVE LOADS, WITH CONSIDERATION FOR IMPACT AND MULTIPLE VEHICLE PRESENCES.

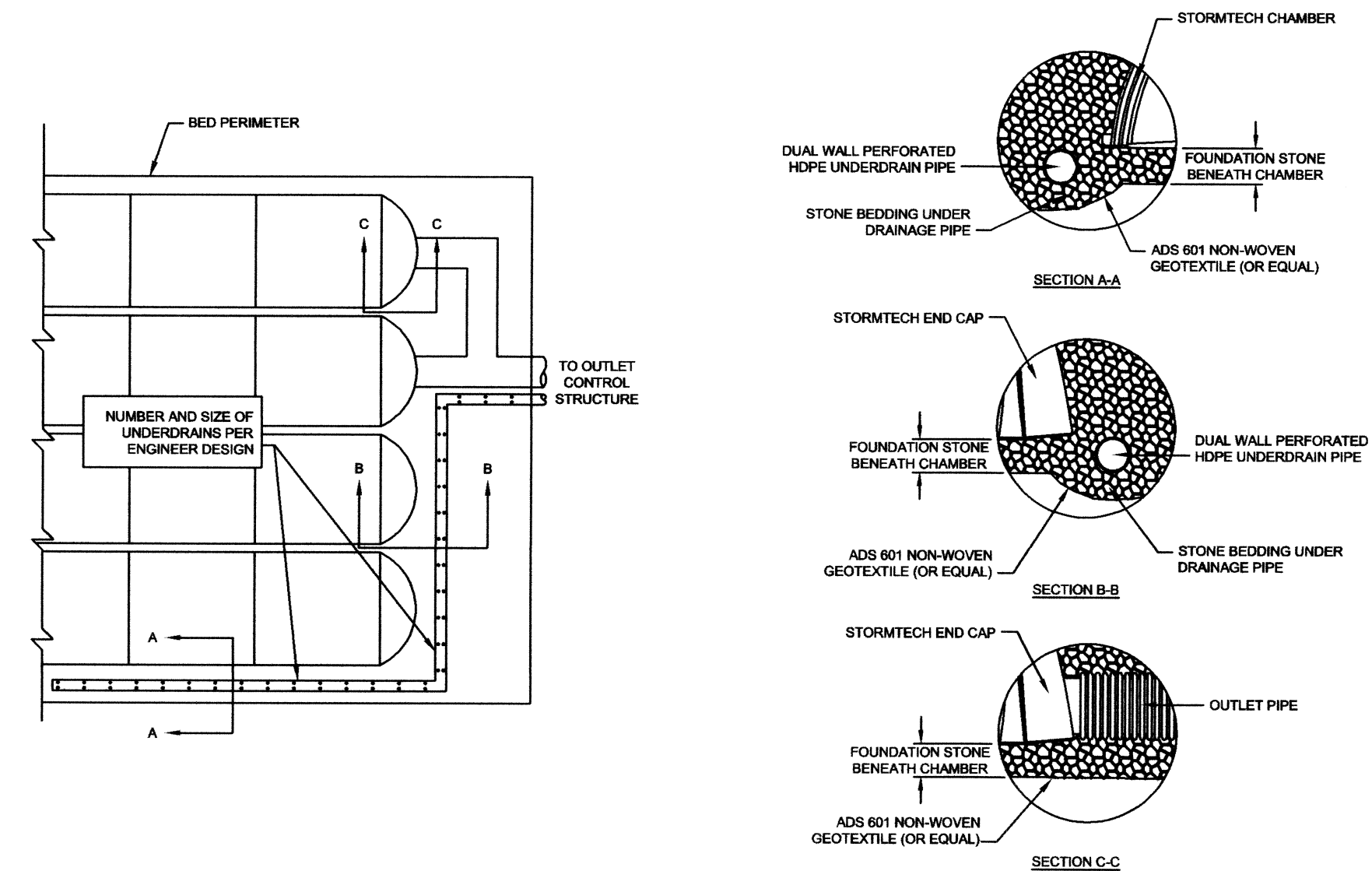
STORMTECH GENERAL NOTES

- STORMTECH LLC ("STORMTECH") REQUIRES INSTALLING CONTRACTORS TO USE AND UNDERSTAND STORMTECH'S LATEST MC-3500 INSTALLATION INSTRUCTIONS PRIOR TO BEGINNING SYSTEM INSTALLATION.
- STORMTECH OFFERS INSTALLATION CONSULTATIONS TO INSTALLING CONTRACTORS. CONTACT OUR TECHNICAL SERVICE DEPARTMENT OR LOCAL STORMTECH REPRESENTATIVE AT LEAST 30 DAYS PRIOR TO SYSTEM INSTALLATION TO ARRANGE A PRE-INSTALLATION CONSULTATION. OUR REPRESENTATIVES CAN THEN ANSWER QUESTIONS OR ADDRESS COMMENTS ON THE STORMTECH CHAMBER SYSTEM AND INFORM THE INSTALLING CONTRACTOR OF THE MINIMUM INSTALLATION REQUIREMENTS BEFORE BEGINNING THE SYSTEM'S CONSTRUCTION. CALL 860-529-8188 TO SPEAK TO A TECHNICAL SERVICE REPRESENTATIVE OR VISIT WWW.STORMTECH.COM TO RECEIVE A COPY OF OUR INSTALLATION INSTRUCTIONS.
- STORMTECH REQUIREMENTS FOR SYSTEMS WITH PAVEMENT DESIGN (ASPHALT, CONCRETE PAVERS, ETC.) MINIMUM COVER IS 24" [610 mm] NOT INCLUDING PAVEMENT; MAXIMUM COVER IS 6.5' [1.98 m] INCLUDING PAVEMENT. FOR INSTALLATIONS THAT DO NOT INCLUDE PAVEMENT, WHERE RUTTING FROM VEHICLES MAY OCCUR, MINIMUM REQUIRED COVER IS 30" [762 mm], MAXIMUM COVER IS 6.5' [1.98 m].
- THE CONTRACTOR MUST REPORT ANY DISCREPANCIES WITH THE BEARING CAPACITY OF THE CHAMBER FOUNDATION MATERIALS TO THE DESIGN ENGINEER.
- AASHTO M288 CLASS 2 NON-WOVEN GEOTEXTILE (FILTER FABRIC) MUST BE USED AS INDICATED IN THE PROJECT PLANS.
- STONE PLACEMENT BETWEEN CHAMBERS ROWS AND AROUND PERIMETER MUST FOLLOW INSTRUCTIONS AS INDICATED IN THE MOST CURRENT VERSION OF STORMTECH MC-3500 CONSTRUCTION GUIDE.
- BACKFILLING OVER THE CHAMBERS MUST FOLLOW REQUIREMENTS AS INDICATED IN THE MOST CURRENT VERSION OF STORMTECH MC-3500 INSTALLATION INSTRUCTIONS.
- THE CONTRACTOR MUST REFER TO STORMTECH MC-3500 CONSTRUCTION GUIDE FOR A TABLE OF ACCEPTABLE VEHICLE LOADS AT VARIOUS DEPTHS OF COVER. THIS INFORMATION IS ALSO AVAILABLE ON THE STORMTECH WEBSITE: WWW.STORMTECH.COM. THE CONTRACTOR IS RESPONSIBLE FOR PREVENTING VEHICLES THAT EXCEED STORMTECH REQUIREMENTS FROM TRAVELING ACROSS OR PARKING OVER THE STORMWATER SYSTEM. TEMPORARY FENCING, WARNING TAPE AND APPROPRIATELY LOCATED SIGNS ARE COMMONLY USED TO PREVENT UNAUTHORIZED VEHICLES FROM ENTERING SENSITIVE CONSTRUCTION AREAS.
- THE CONTRACTOR MUST APPLY EROSION AND SEDIMENT CONTROL MEASURES TO PROTECT THE STORMWATER SYSTEM DURING ALL PHASES OF SITE CONSTRUCTION PER LOCAL CODES AND DESIGN ENGINEER'S SPECIFICATIONS.
- STORMTECH PRODUCT WARRANTY IS LIMITED. CONTACT STORMTECH FOR WARRANTY INFORMATION.



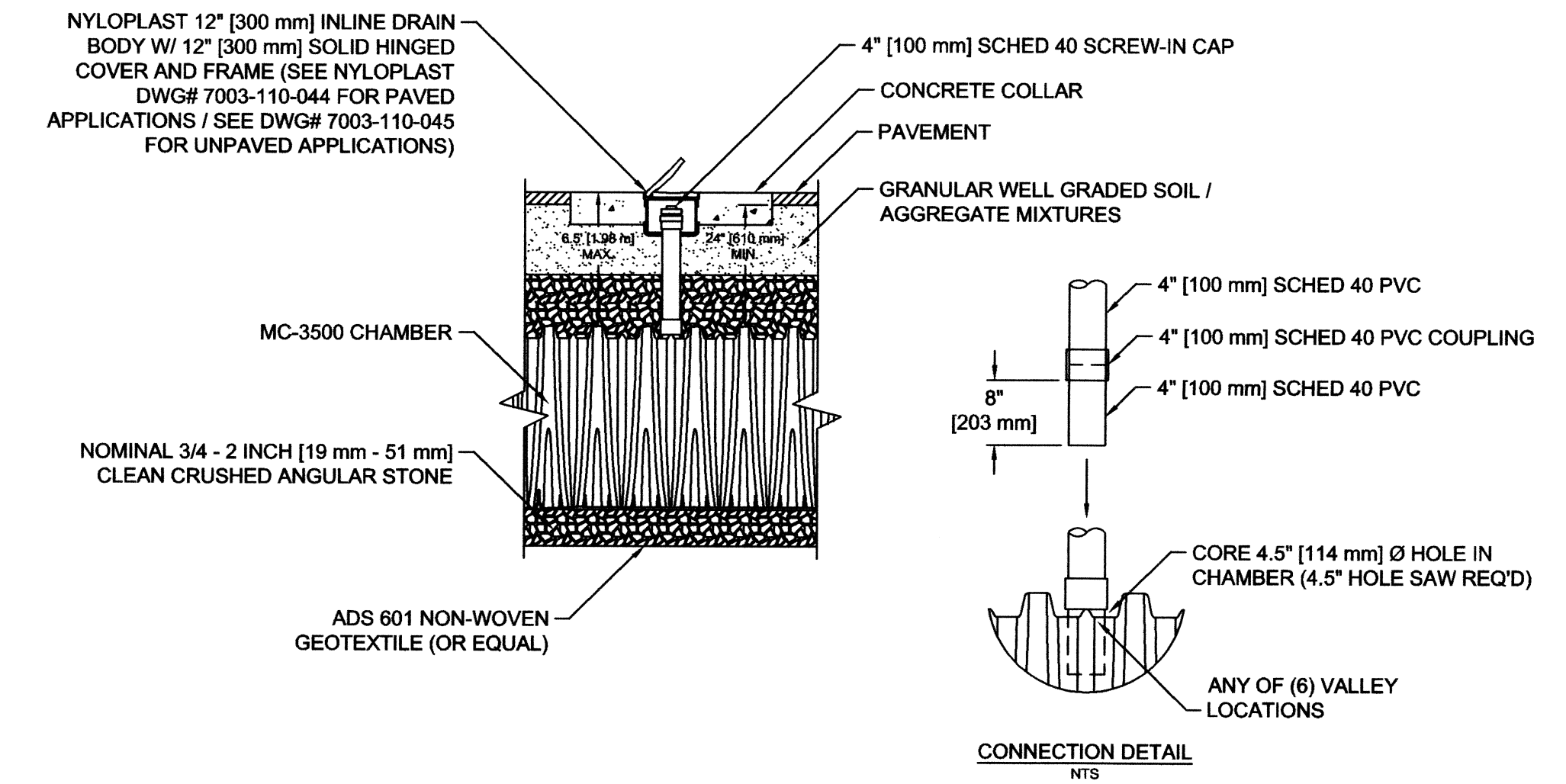
ISOLATOR ROW PROFILE

- CHAMBERS SHALL BE STORMTECH MC-3500 OR APPROVED EQUAL.
- CHAMBERS SHALL BE MADE FROM VIRGIN, IMPACT-MODIFIED POLYPROPYLENE COPOLYMERS.
- CHAMBER ROWS SHALL PROVIDE CONTINUOUS, UNOBSTRUCTED INTERNAL SPACE WITH NO INTERNAL SUPPORT PANELS THAT WOULD IMPEDE FLOW OR LIMIT ACCESS FOR INSPECTION.
- THE STRUCTURAL DESIGN OF THE CHAMBERS, THE STRUCTURAL BACKFILL AND THE INSTALLATION REQUIREMENTS SHALL ENSURE THAT THE LOAD FACTORS SPECIFIED IN THE AASHTO LRFD BRIDGE DESIGN SPECIFICATIONS, SECTION 12.12 ARE MET FOR: 1) LONG-DURATION DEAD LOADS AND 2) SHORT-DURATION LIVE LOADS, BASED ON THE AASHTO DESIGN TRUCK WITH CONSIDERATION FOR IMPACT AND MULTIPLE VEHICLE PRESENCES.
- CHAMBERS SHALL CONFIRM TO THE REQUIREMENTS OF ASTM F 2418, "STANDARD SPECIFICATIONS FOR POLYPROPYLENE (PP) CORRUGATED WALL STORMWATER COLLECTION CHAMBERS."
- CHAMBERS SHALL CONFIRM TO THE REQUIREMENTS OF ASTM F 2787, "STANDARD PRACTICE FOR STRUCTURAL DESIGN OF THERMOPLASTIC CORRUGATED WALL STORMWATER COLLECTION CHAMBERS."
- ONLY CHAMBERS THAT ARE APPROVED BY THE ENGINEER WILL BE ALLOWED. THE CONTRACTOR SHALL SUBMIT (3 SETS) OF THE FOLLOWING TO THE ENGINEER FOR APPROVAL BEFORE DELIVERING CHAMBERS TO THE PROJECT SITE:
 - A STRUCTURAL EVALUATION BY A REGISTERED STRUCTURAL ENGINEER THAT DEMONSTRATES THAT THE LOAD FACTORS SPECIFIED IN THE AASHTO LRFD BRIDGE DESIGN SPECIFICATIONS, SECTION 12.12 ARE MET.
 - STRUCTURAL CROSS SECTION DETAIL ON WHICH THE STRUCTURAL CROSS SECTION IS BASED.
- THE INSTALLATION OF CHAMBERS SHALL BE IN ACCORDANCE WITH THE MANUFACTURER'S LATEST CONSTRUCTION GUIDE.



OUTLET/UNDERDRAIN DETAIL

- NOTES:
- INSPECTION PORTS MAY BE CONNECTED THROUGH ANY OF (6) CHAMBER CORRUGATION VALLEYS
 - ALL SCHEDULE 40 FITTINGS TO BE SOLVENT CEMENTED.



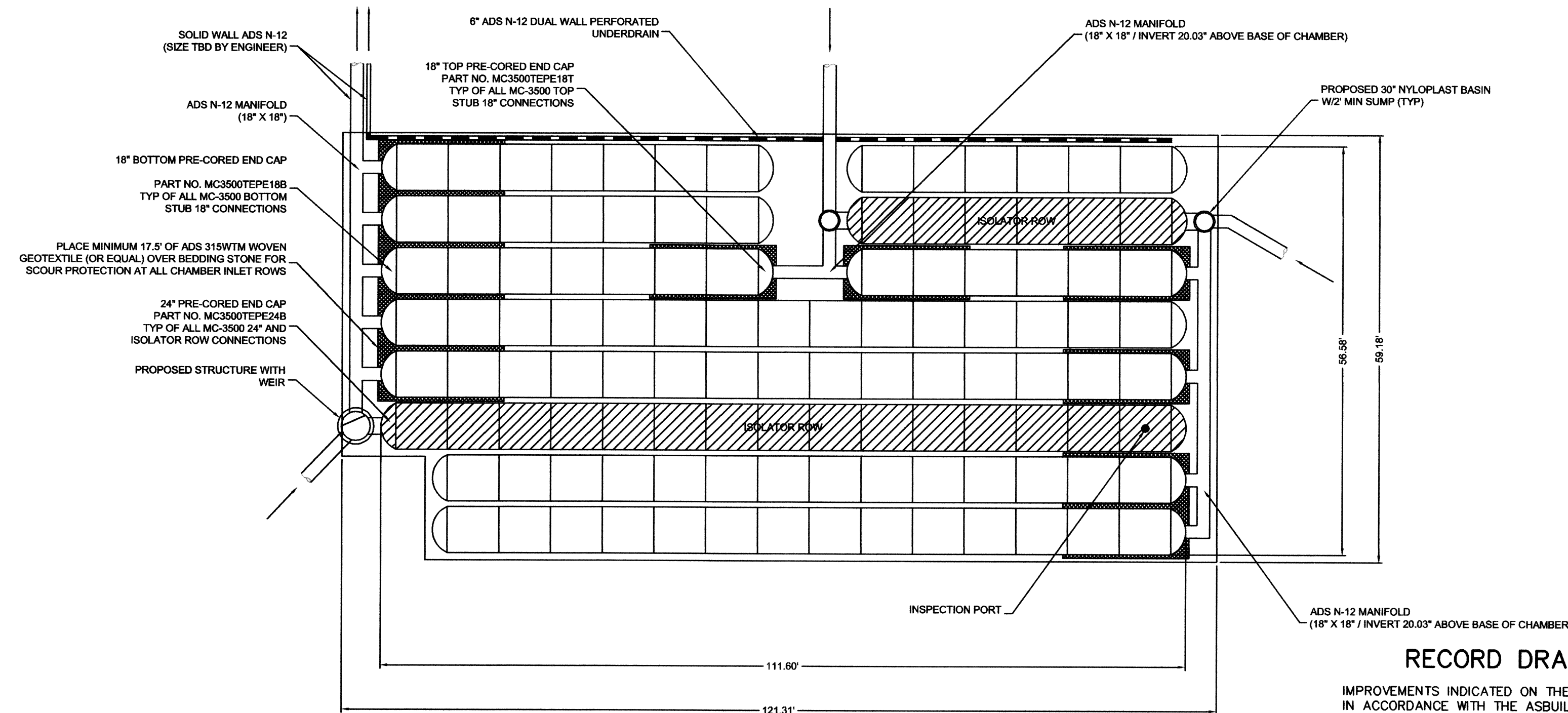
ACCESS PORT DETAIL

CONCEPTUAL LAYOUT

(112) STORMTECH MC-3500 CHAMBERS
 (22) STORMTECH MC-3500 END CAPS
 INSTALLED WITH 12" COVER STONE, 9" BASE STONE, 40% STONE VOID
 INSTALLED SYSTEM VOLUME (PERIMETER STONE INCLUDED): 23,025 CF

PROPOSED ELEVATIONS

MAX. GRADE (TOP OF PAVEMENT/UNPAVED): 510.00
 MIN. GRADE (UNPAVED WITH TRAFFIC): 506.00
 MIN. GRADE (BASE OF FLEXIBLE PAVEMENT/UNPAVED): 505.50
 MIN. GRADE (TOP OF REINFORCED CONCRETE PAVEMENT): 505.50
 TOP OF STONE: 504.50
 TOP OF CHAMBER: 503.50
 18" TOP MANIFOLD INVERT: 501.42
 24" INVERT TO ISOLATOR ROW(S): 499.92
 18" BOTTOM MANIFOLD INVERT: 499.90
 BOTTOM OF CHAMBER: 499.75
 BOTTOM OF STONE: 499.00
 UNDERDRAIN: 499.00



RECORD DRAWING

IMPROVEMENTS INDICATED ON THESE PLANS WHERE REVISED IN ACCORDANCE WITH THE ASBUILT SURVEY PERFORMED BY JAMES ANDERSON AND PROVIDED TO BENTLEY ENGINEERING, INC. ON 02/14/14.
 DATE: FEBRUARY 19, 2014

STORMTECH DETENTION SYSTEM

CHILDREN'S PARK
 CITY OF ROCKWALL, TEXAS

RECORD DRAWING

Scale: NTS
 File Name: XX
 Date: mar 2013
 Project No.: 2012109

Sheet
 DT1