

TEXAS LAND ENGINEERS, INC.
 1201 SHEPHERD DRIVE
 HOUSTON, TX 77007
 PH: (281) 576-1085
 FAX: (281) 576-1086

REVISIONS	
NO.	DATE DESCRIPTION

CHILDRENS LIGHTHOUSE
 3009 GOLIAD STREET
 ROCKWALL, TEXAS

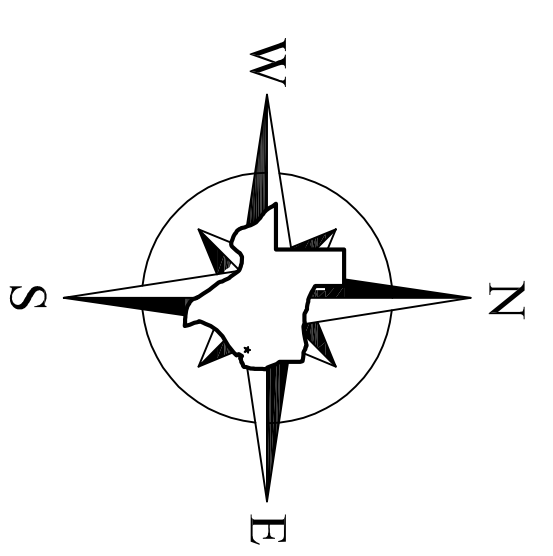
STORM WATER POLLUTION PREVENTION PLAN



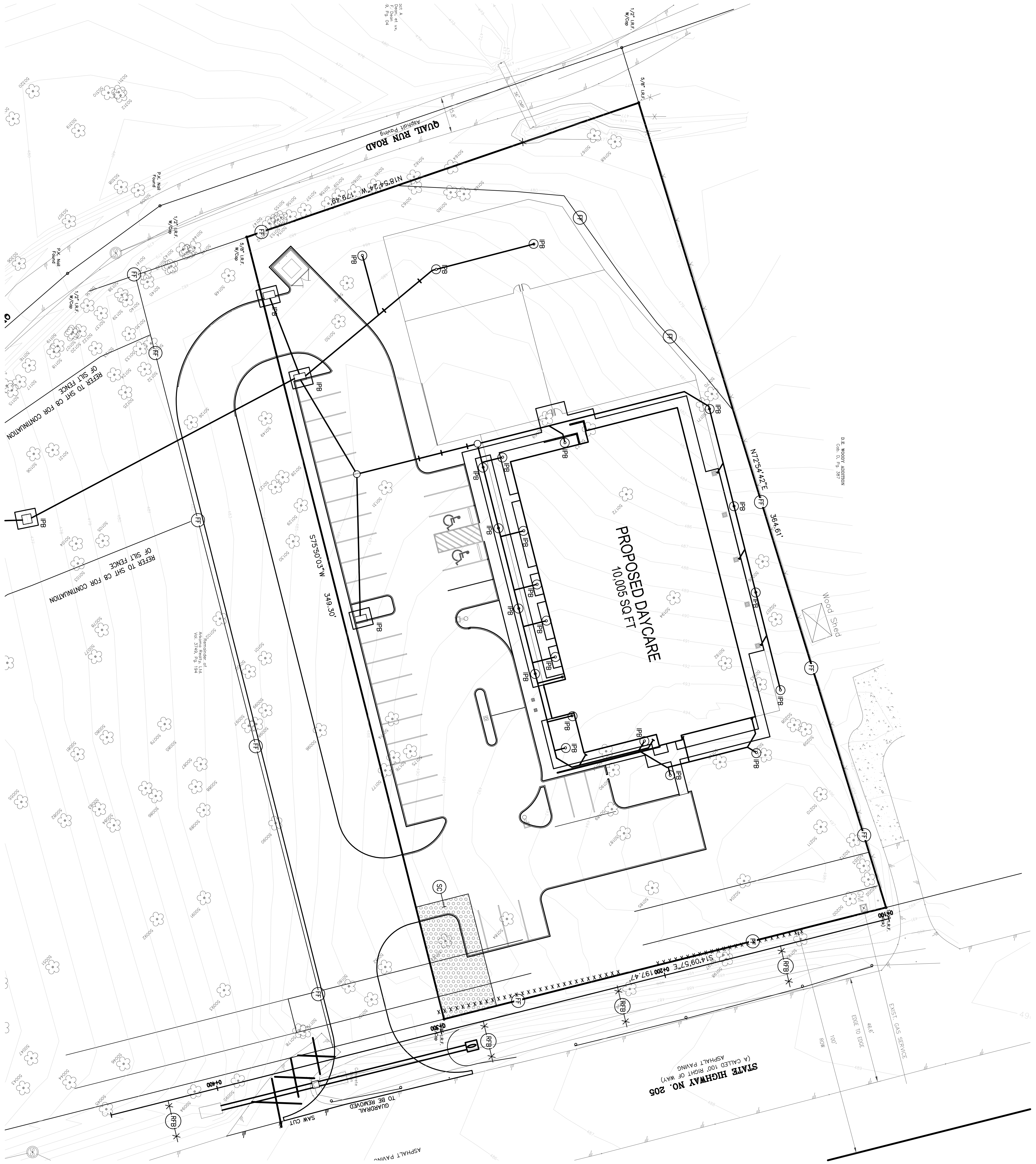
REGISTRATION NO. 1-9553
 08-03-09

TITLE PROJECT NO. 08-0402
 DATE: AUGUST 2009
 DRAWN BY: DG
 CHECKED BY: JG

SHEET
C9



SCALE: 1"=20'



- SWPPP LEGEND**
- FF — x FILTER FABRIC FENCE
 - RFB — x REINFORCED FILTER FABRIC BARRIER
 - IPB — x INLET PROTECTION BARRIERS
 - SC — x STABILIZED CONSTRUCTION ACCESS

STORM WATER POLLUTION PREVENTION NOTES

- 1.) SEDIMENT WILL BE REMOVED ON SITE TO THE MAXIMUM EXTENT PRACTICABLE.
- 2.) CONTROL MEASURES WILL BE PROPERLY SITED, INSTALLED AND MAINTAINED IN ACCORDANCE WITH MANUFACTURER'S SPECIFICATIONS AND GOOD ENGINEERING PRACTICE. IF DAMAGED OR RENDERED INEFFECTIVE, THE EROSION AND SEDIMENT CONTROL MEASURES WILL BE REPAIRED IMMEDIATELY.
- 3.) WHEN PLACING (DEMURRING) STORM WATER FROM THE SITE, THE CONSTRUCTION ACTIVITIES UNREMOVED/DIRECT DISCHARGE INTO A STORM SEWER WILL BE ALLOWED.
- 4.) AT THE INTERIM PERIOD BETWEEN CONSTRUCTION OF UTILITIES AND STREET PAVING, STORM WATER SHALL BE COLLECTED AND STORED IN A POND OR OTHER STORAGE FACILITY OR OTHERWISE STABILIZED WITHIN THE 14 DAYS.
- 5.) WATER PAVING COMPLETION, NEWLY GRADED AREAS AND ALL EXPOSED SOILS WILL BE COMPLETELY STABILIZED.
- 6.) CONTROL MEASURES WILL BE INSTALLED ALONG EACH SIDE OF DRIVE TO ADEQUATELY PREVENT SEDIMENT RUNOFF INTO STREETS ONCE PAVING IS COMPLETE.
- 7.) CONCRETE TRACKS WILL NOT BE ALLOWED TO WASH OUT OR DISCHARGE SEDIMENT CONCRETE OR GRAVEL WASH WATER ON THE SITE, UNLESS THEY ARE USING A PROPERLY DESIGNED AND DESIGNED CONCRETE WASHOUT AREA.
- 8.) EROSION AND SEDIMENT CONTROL MEASURES THAT HAVE BEEN IMPROPERLY INSTALLED MUST BE REPAIRED OR CORRECTED IMMEDIATELY.
- 9.) MAINTENANCE AND REPAIRS WILL BE CONDUCTED WITHIN 24 HOURS OF INSPECTION REPORT.
- 10.) SEDIMENT WILL BE REMOVED FROM BEHIND THE FILTER FABRIC FENCE WHEN IT REACHES 1/2 THE HEIGHT OF THE FENCE.
- 11.) SEDIMENT WILL BE REMOVED FROM THE SLOTTED BARRIERS AND DICES WHEN THE SEDIMENT CAPACITY HAS BEEN APPROXIMATELY 50% FULL.
- 12.) SEDIMENTATION OF ALL AREAS WILL BE COMPLETED OVER 72 HOURS, (7) 24 HOURS OR SHORTER, OR EVERY 7 OUTDOOR DAYS.
- 13.) EROSION AND SEDIMENT CONTROL MEASURES IDENTIFIED IN THE PLANS WILL BE MAINTAINED THROUGHOUT THE CONSTRUCTION PERIOD.
- 14.) THE SWPPP WILL BE AMENDED TO REPLACE NECESSARY AREAS IDENTIFIED THROUGH INSPECTIONS WITHIN 7 DAYS OF DETERMINING THE DEFICIENCY.
- 15.) REPAIRS WILL INCLUDE WHAT MAINTENANCE WAS DONE AS A RESULT OF THE INSPECTION.
- 16.) ALL LITTER, TRASH AND FLammable LIQUIDS WILL BE CONTAINED.

AS-BUILT DRAWINGS