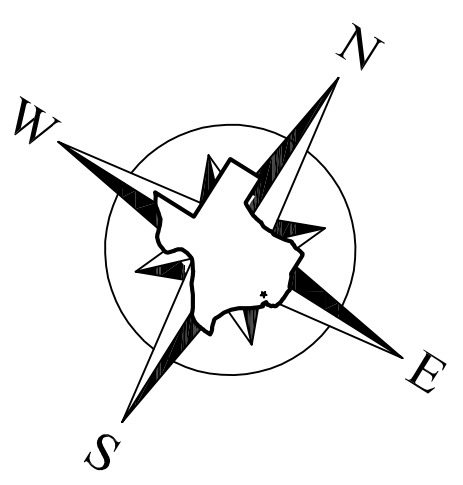


STORM SEWER



SCALE: 1"=20'

BENCHMARK DATA

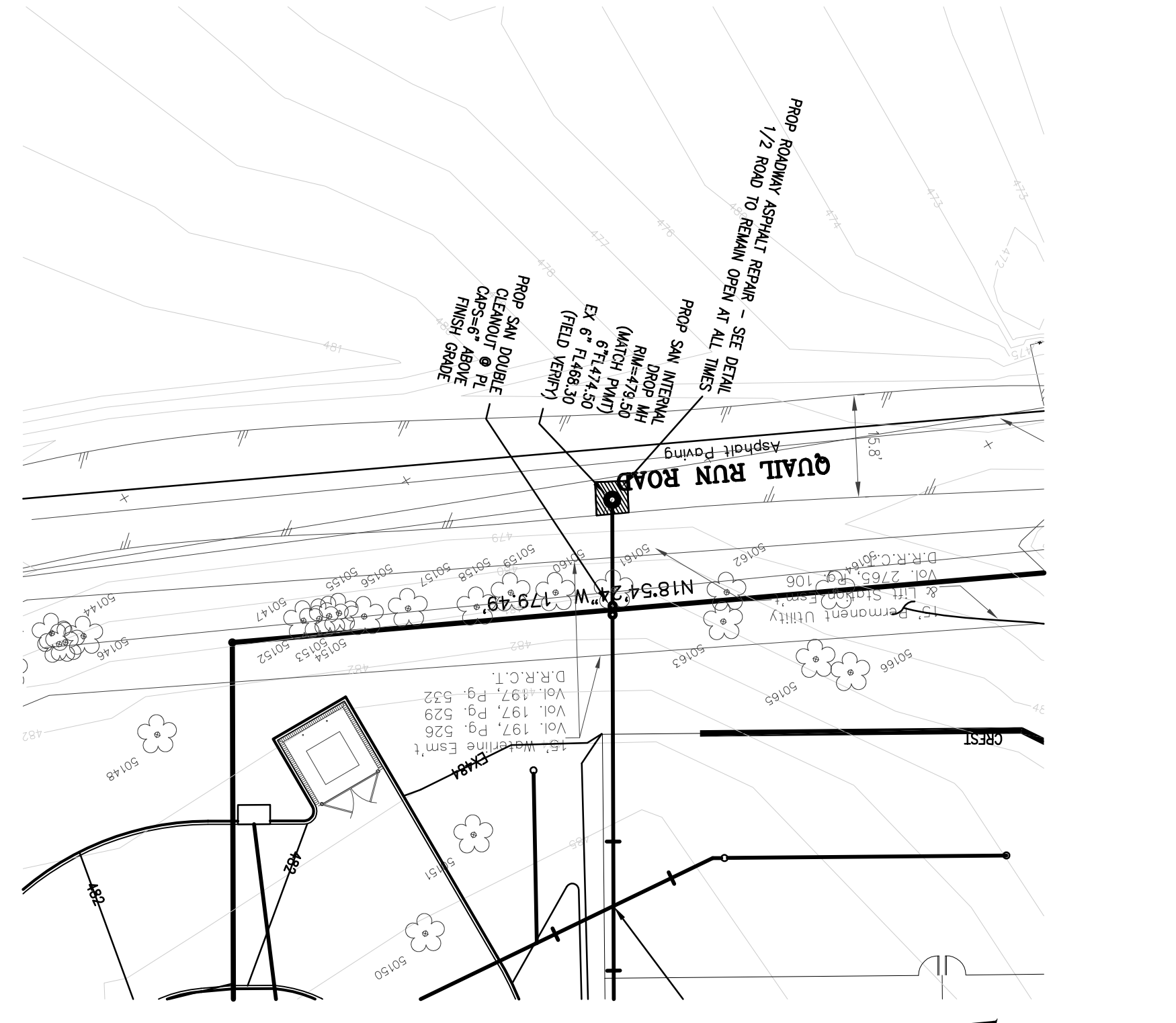
X SET ON EAST END TO CONCRETE TURNOUT AT THE INTERSECTION OF RANDOM OAKS DRIVE AND QUAIL RUN ELEV. 471.40'

X SET ON SOUTH SIDE OF QUAIL RUN, 423' EAST OF RANDOM OAKS DRIVE ELEV. 492.27'

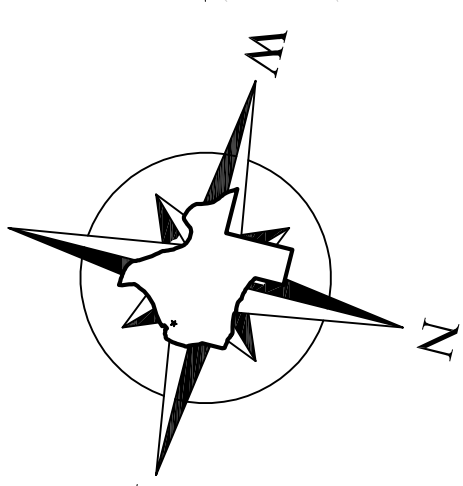
X SET ON NORTH SIDE OF CONCRETE DRIVE TO BUILDING ON EAST SIDE OF FM205 AT THE INTERSECTION OF FM 250 AND QUAIL RUN ROAD ELEV. 481.48'

GENERAL NOTES

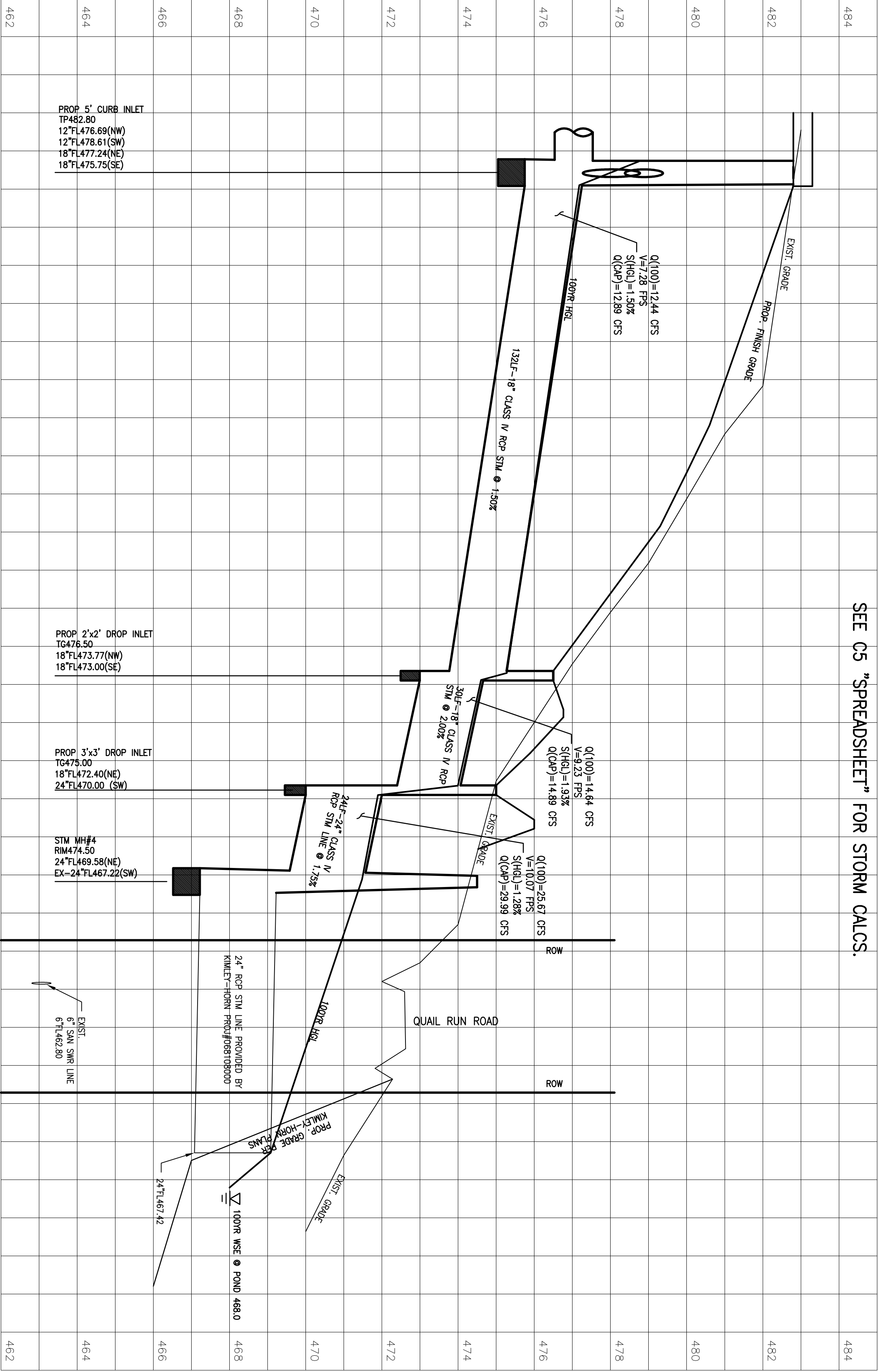
1. KIMLEY-HORN DESIGNED THE 24" RCP PIPE UNDER QUAIL RUN ROAD.
2. THIS SYSTEM AS DESIGNED WILL CONVEY THE 100% EVENT, APPROX. 26 CFS (SYSTEM FLOWING FULL). THE 24" LINE DESIGNED BY KIMLEY-HORN WILL FLOW 26 CFS AT 8.28 FPS, ELEV 471.20.



SANITARY SEWER

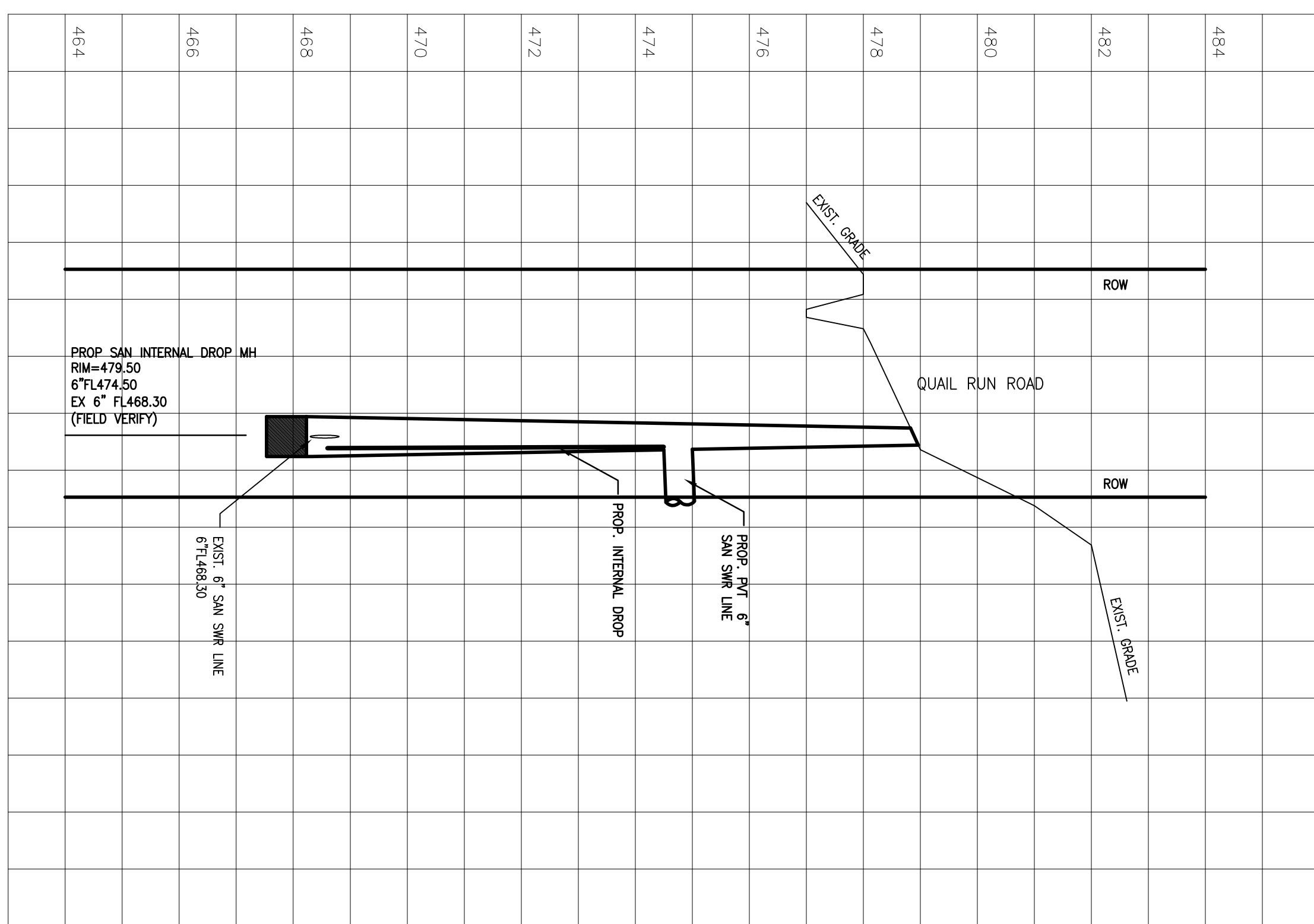


SCALE: 1"=20'

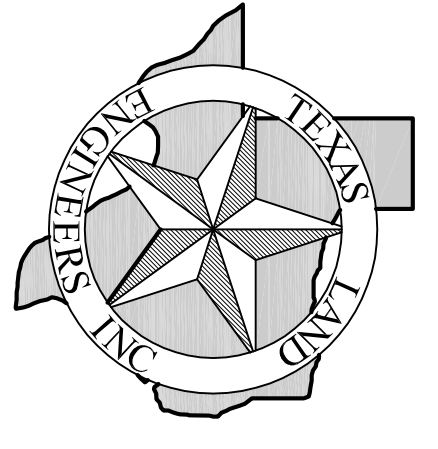


SEE C5 "SPREADSHEET" FOR STORM CALCS.

SCALE:
HORIZONTAL: 1"=20'
VERTICAL: 1"=2'



SCALE:
HORIZONTAL: 1"=20'
VERTICAL: 1"=2'



TEXAS LAND ENGINEERS, INC.
1201 SHEPHERD DRIVE
HOUSTON, TX 77007
PH: (281) 576-1085
FAX: (281) 576-1086

NO.	DATE	DESCRIPTION

CHILDRENS LIGHTHOUSE
3009 GOLIAD STREET
ROCKWALL, TEXAS

STM SWR & SAN SWR PLAN & PROFILE

REGISTRATION NO. E-9553

08-03-09

JOHN D. GIBSON
8899

STATE OF TEXAS
PROFESSIONAL ENGINEER
LICENSE NO. 8899

TITLE PROJECT NO. 08-062
DATE: AUGUST 2009
DRAWN BY: DG
CHECKED BY: JG

SHEET
C8

AS-BUILT DRAWINGS