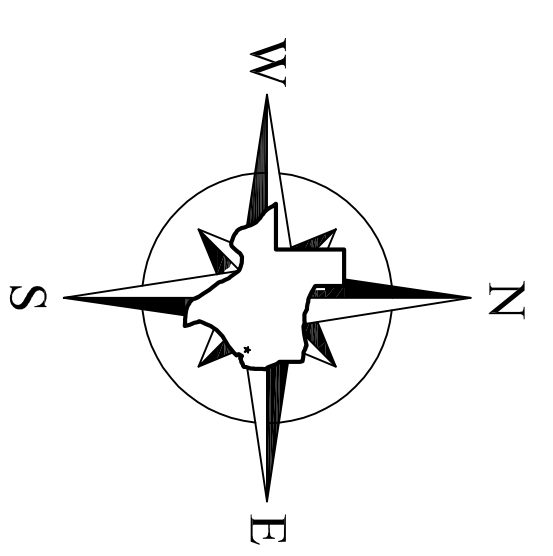
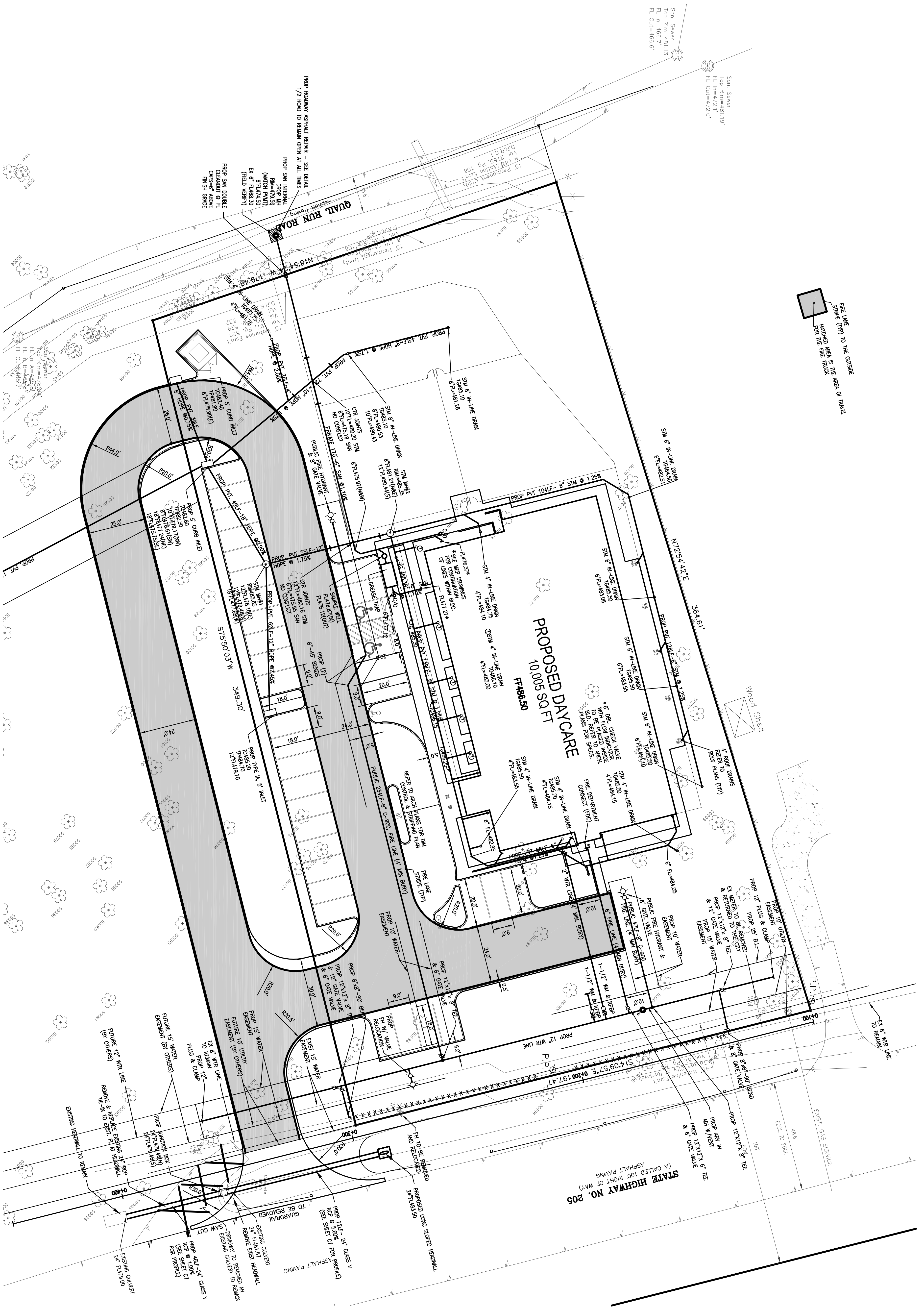


FIRE LINE (P) TO THE OUTSIDE  
 STREPE (TP) IS THE AREA OF TRAVEL  
 HATCHED AREA IS THE AREA OF TRAVEL  
 FOR THE FIRE TRUCK



SCALE: 1"=20'

**UTILITY LEGEND**

- SNR - SANITARY
- SNR - SEWER
- WLL - WATER LINE
- WTR - WATER
- WM - WATER METER
- RR - RIBBON WATER METER
- TSBY - TAP, SERVICE & VALVE
- RRP - REDUCED PRESSURE BACKFLOW PREVENTOR
- SNV - STORM
- MM - MANHOLE
- FI - FIRE HYDRANT
- LF - LINER FEET
- CO - CLEAN OUT
- ESMT - EASEMENT
- PRPP - PROPOSED
- FF - FINISH FLOOR
- TO - TOP OF GRADE
- TR - TOP OF FIN
- FL - FLOW LINE
- ADJ - ADJUST ELEVATION
- WPP - WHICH PROPOSED POINT

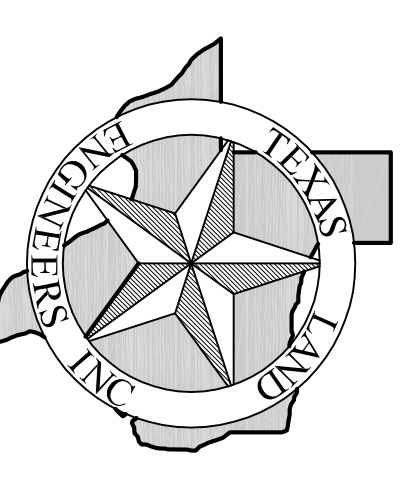
**GENERAL NOTE**

1. REFER TO SHEET C4 FOR WATER LINE PLAN & PROFILE.
2. REFER TO SHEET C5 FOR STORM SEWER AND SANITARY SEWER PLAN & PROFILE.
3. UNDERGROUND FIRE LINE MUST BE INSTALLED BY A CONTRACTOR WHO IS LICENSED WITH THE STATE OF TEXAS FIRE MARSHALL'S OFFICE.
4. ALL PRIVATE STIM LINES TO BE ADS HOPE PIPE.
5. ALL FIRE HYDRANTS TO HAVE MIN. 5 FT. CLEARANCE.
6. ALL SERVICES TO HAVE DOUBLE CHECK AND BACKFLOW PREVENTION.
7. ALL FIRELINE TO BE INSPECTED BY FIRE DEPARTMENT FROM MAIN TO BUILDING PRIOR TO BACKFILLING.

**BENCHMARK DATA**

- X SET ON EAST END TO CONCRETE TURNOUT AT THE INTERSECTION OF RANDOM OAKS DRIVE AND QUAIL RUN ELEV. 471.40'
- X SET ON SOUTH SIDE OF QUAIL RUN, 423' EAST OF RANDOM OAKS DRIVE ELEV. 492.27'
- X SET ON NORTH SIDE OF CONCRETE DRIVE TO BUILDING ON EAST SIDE OF FM 250 AT THE INTERSECTION OF FM 250 AND QUAIL RUN ROAD ELEV. 481.48'

**AS-BUILT DRAWINGS**



TEXAS LAND ENGINEERS, INC.  
 1201 SHEPHERD DRIVE  
 HOUSTON, TX 77007  
 PH: (281) 576-1085  
 FAX: (281) 576-1086

NO.	DATE	DESCRIPTION

**CHILDRENS LIGHTHOUSE**  
 3009 GOLIAD STREET  
 ROCKWALL, TEXAS

**UTILITY PLAN**



REGISTRATION NO. E-98553  
 TITLE PROJECT NO. 08-062  
 DATE: AUGUST 2009  
 DRAWN BY: DG  
 CHECKED BY: JG

SHEET  
**C6**