

TEXAS LAND ENGINEERS, INC.
 1201 SHEPHERD DRIVE
 HOUSTON, TX 77007
 PH: (281) 576-1085
 FAX: (281) 576-1086

REVISIONS	
NO.	DATE DESCRIPTION

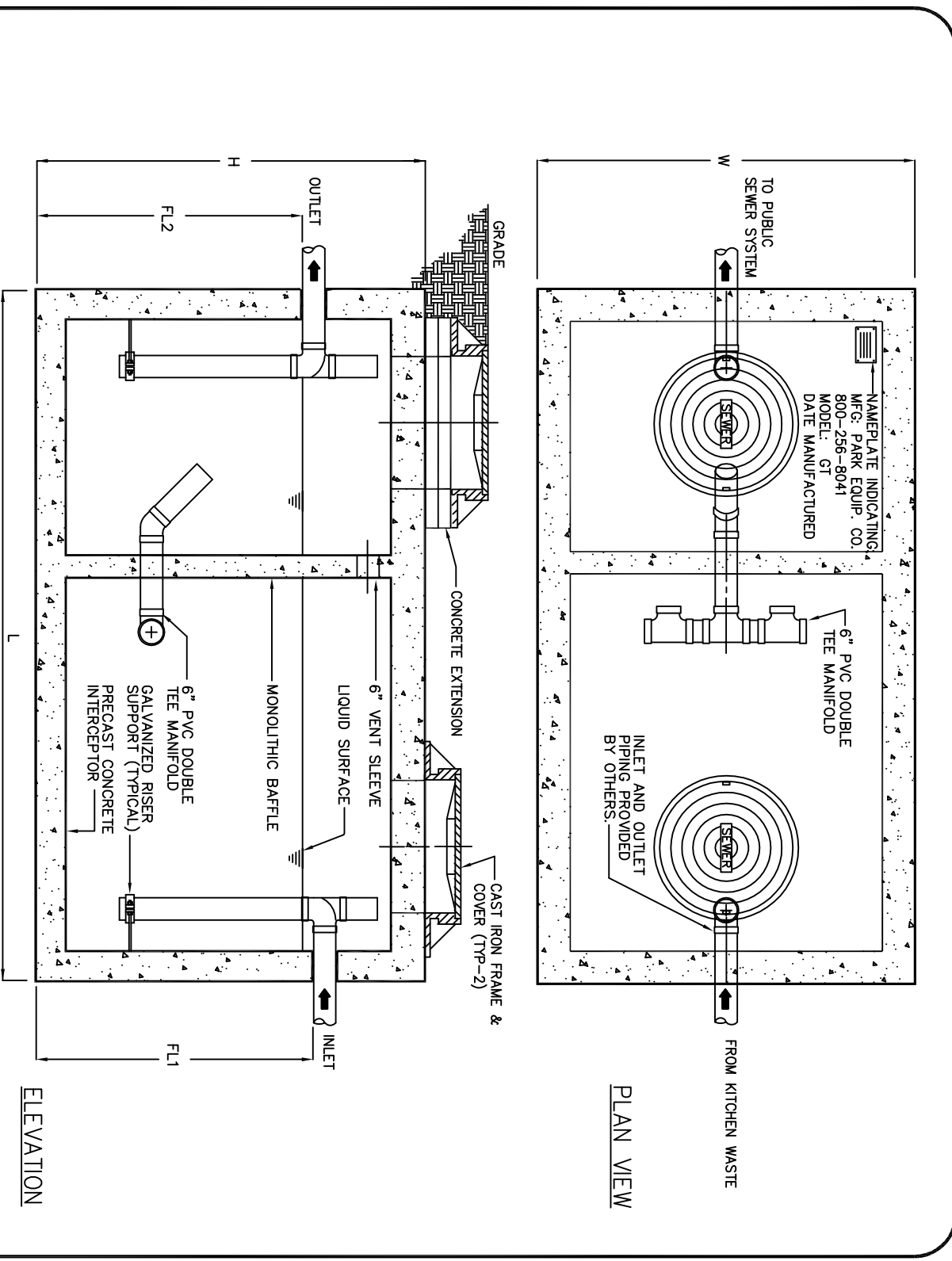
CHILDRENS LIGHTHOUSE
 3009 GOLIAD STREET
 ROCKWALL, TEXAS

SANITARY SEWER CONST. DETAILS

REGISTRATION NO. E-9553

TITLE PROJECT NO. 08-062
 DATE: AUGUST 2009
 DRAWN BY: DG
 CHECKED BY: JG

SHEET
C11



GREASE INTERCEPTOR SCHEDULE

MODEL NO.	WIDTH (IN)	DEPTH (IN)	LENGTH (IN)	HEIGHT (IN)	INLET DIA. (IN)	OUTLET DIA. (IN)
GT-500	500	750	7'-0"	4'-4"	6'-0"	5'-5"
GT-750	750	1,000	7'-10"	4'-4"	6'-0"	5'-5"
GT-1000	1,000	1,250	7'-10"	4'-4"	6'-0"	5'-5"
GT-1500	1,500	1,500	8'-0"	5'-0"	6'-0"	5'-5"
GT-2000	2,000	1,750	8'-0"	5'-0"	6'-0"	5'-5"
GT-2500	2,500	2,000	8'-0"	5'-0"	6'-0"	5'-5"
GT-3000	3,000	2,250	8'-0"	5'-0"	6'-0"	5'-5"
GT-3500	3,500	2,500	8'-0"	5'-0"	6'-0"	5'-5"
GT-4000	4,000	2,750	8'-0"	5'-0"	6'-0"	5'-5"
GT-4500	4,500	3,000	8'-0"	5'-0"	6'-0"	5'-5"
GT-5000	5,000	3,250	8'-0"	5'-0"	6'-0"	5'-5"

OTHER SIZES ARE AVAILABLE. CONTACT US FOR MORE INFORMATION.

Specifications
 Class 1 concrete with design strength of 4500 PSI at 28 days. Unit is of monolithic construction of floor, first stage of wall and baffle. Reinforcement, steel in pipe is not acceptable. Reinforcement to ASTM A615 on required centers or equal. Cast iron frames and grates are manufactured to ASTM A487. Manhole will be nominal 24 inch diameter. Manhole will be 18" x 18" x 18".

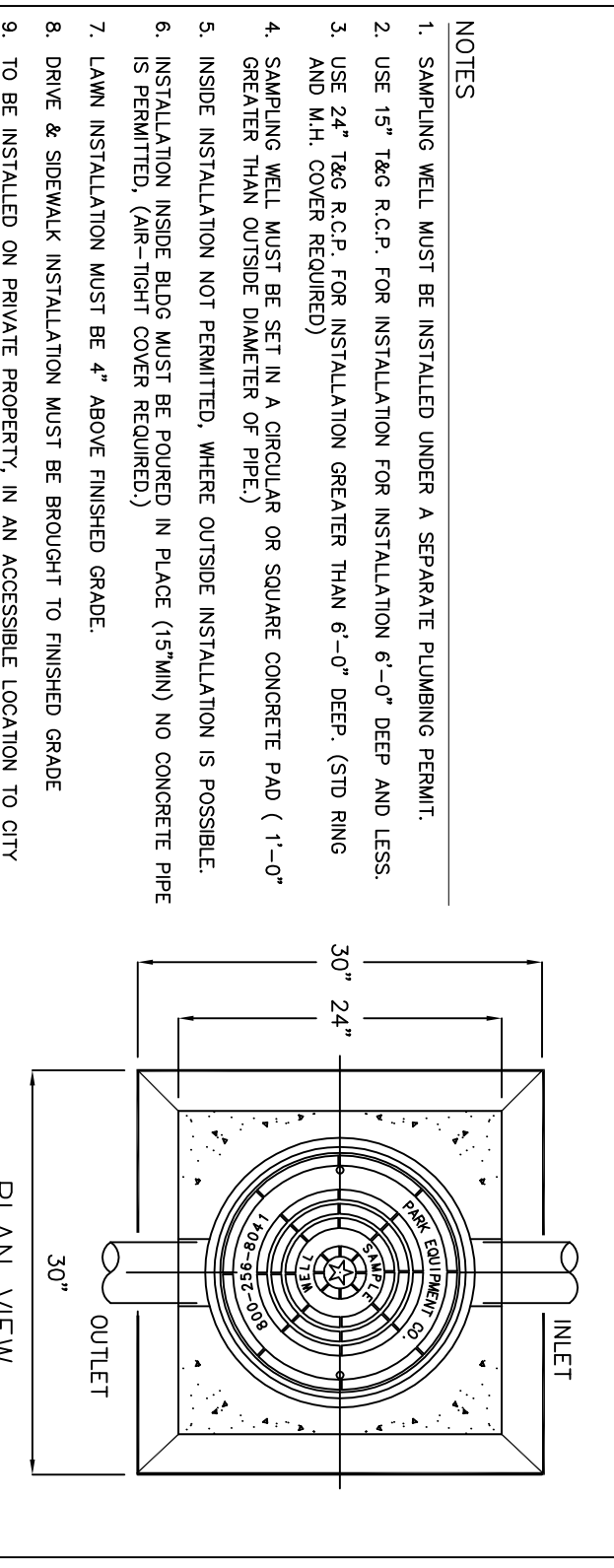
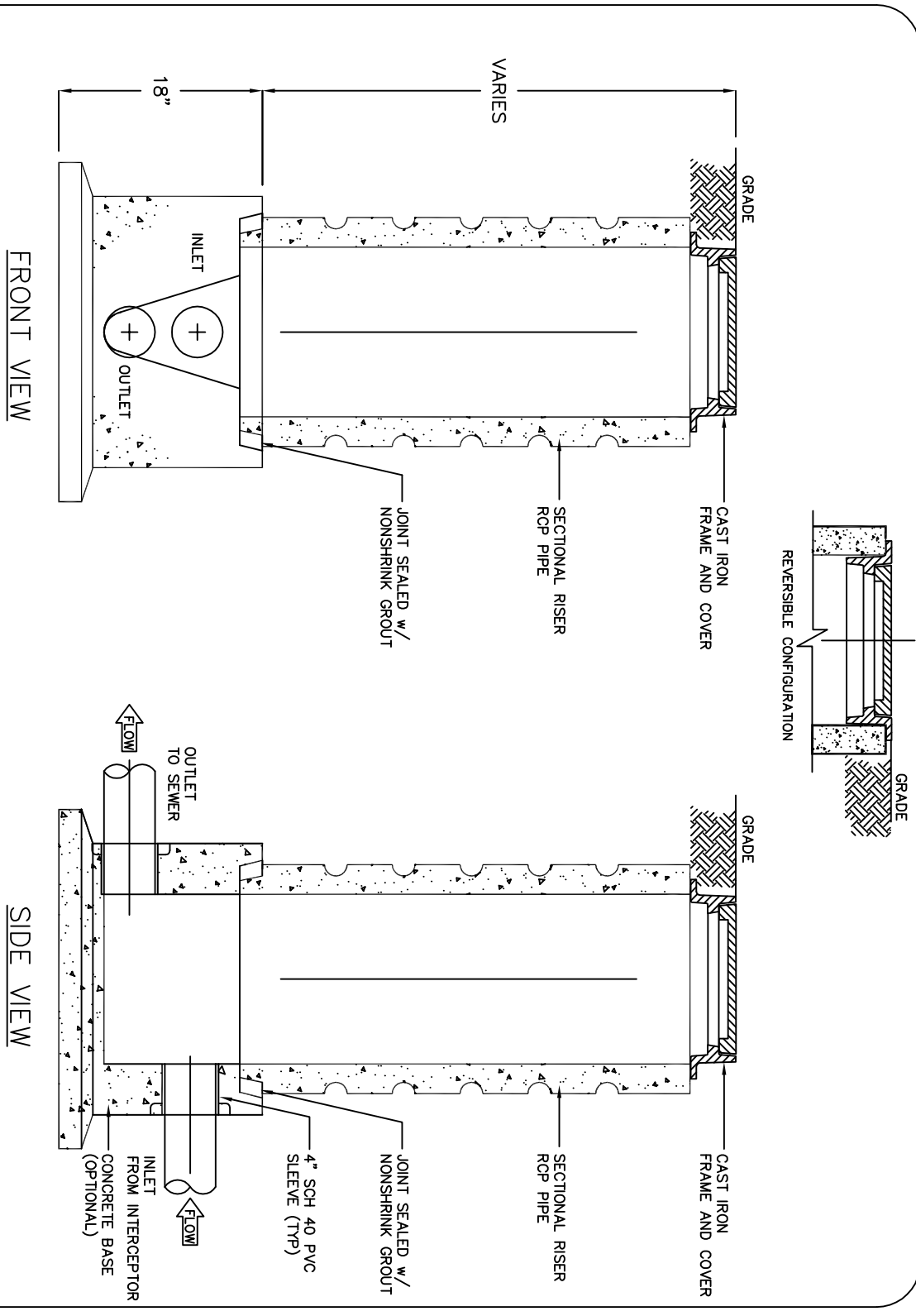
REINFORCEMENT: Grade 60 rebar with steel ratio conforming to ASTM A615 on required centers or equal.

C.I. CASTINGS: Cast iron frames and grates are manufactured to ASTM A487. Manhole will be nominal 24 inch diameter. Manhole will be 18" x 18" x 18".

TEL (713) 937-7602
 FAX (713) 937-4244
 WMS (800) 298-8041

GREASE TRAP SERIES GT
 300 THRU 4000 GALLON CAPACITY

SCALE NONE DWG. NO. GT-1
 DATE 01/04 REV. A



NOTES

- SAMPLE WELL MUST BE INSTALLED UNDER A SEPARATE PLUMBING PERMIT.
- USE 1/2" TAG R.C.P. FOR INSTALLATION FOR INSTALLATION 6'-0" DEEP AND LESS.
- USE 2" TAG R.C.P. FOR INSTALLATION GREATER THAN 6'-0" DEEP. (STD RING AND MH. COVER REQUIRED)
- SAMPLE WELL MUST BE SET IN A CIRCULAR OR SQUARE CONCRETE PAD (1'-0" GREATER THAN OUTSIDE DIAMETER OF PIPE).
- INSIDE INSTALLATION NOT PERMITTED, WHERE OUTSIDE INSTALLATION IS POSSIBLE.
- INSTALLATION WHERE RIGID MUST BE PROVIDED IN PLACE (13" MIN) NO CONCRETE PIPE IS PERMITTED. (AIR-TIGHT COVER REQUIRED)
- LAWN INSTALLATION MUST BE 4" ABOVE FINISHED GRADE.
- DRIVE & SIDEWALK INSTALLATION MUST BE BROUGHT TO FINISHED GRADE.
- TO BE INSTALLED ON PRIVATE PROPERTY, IN AN ACCESSIBLE LOCATION TO CITY PERSONNEL.

REVERSIBLE CONNECTION

PLAN VIEW

FRONT VIEW

SIDE VIEW

SPECIFICATIONS

CONCRETE : Class 1 concrete with design strength of 4500 PSI at 28 days. Unit is of monolithic construction of floor, first stage of wall and baffle. Reinforcement, steel in pipe is not acceptable. Reinforcement to ASTM A615 on required centers or equal.

C.I. CASTINGS: Cast iron frames and grates are manufactured to ASTM A487. Manhole will be nominal 24 inch diameter. Manhole will be 18" x 18" x 18".

SCALE NONE DWG. NO. SWB-4

DATE 01/04 REV. A