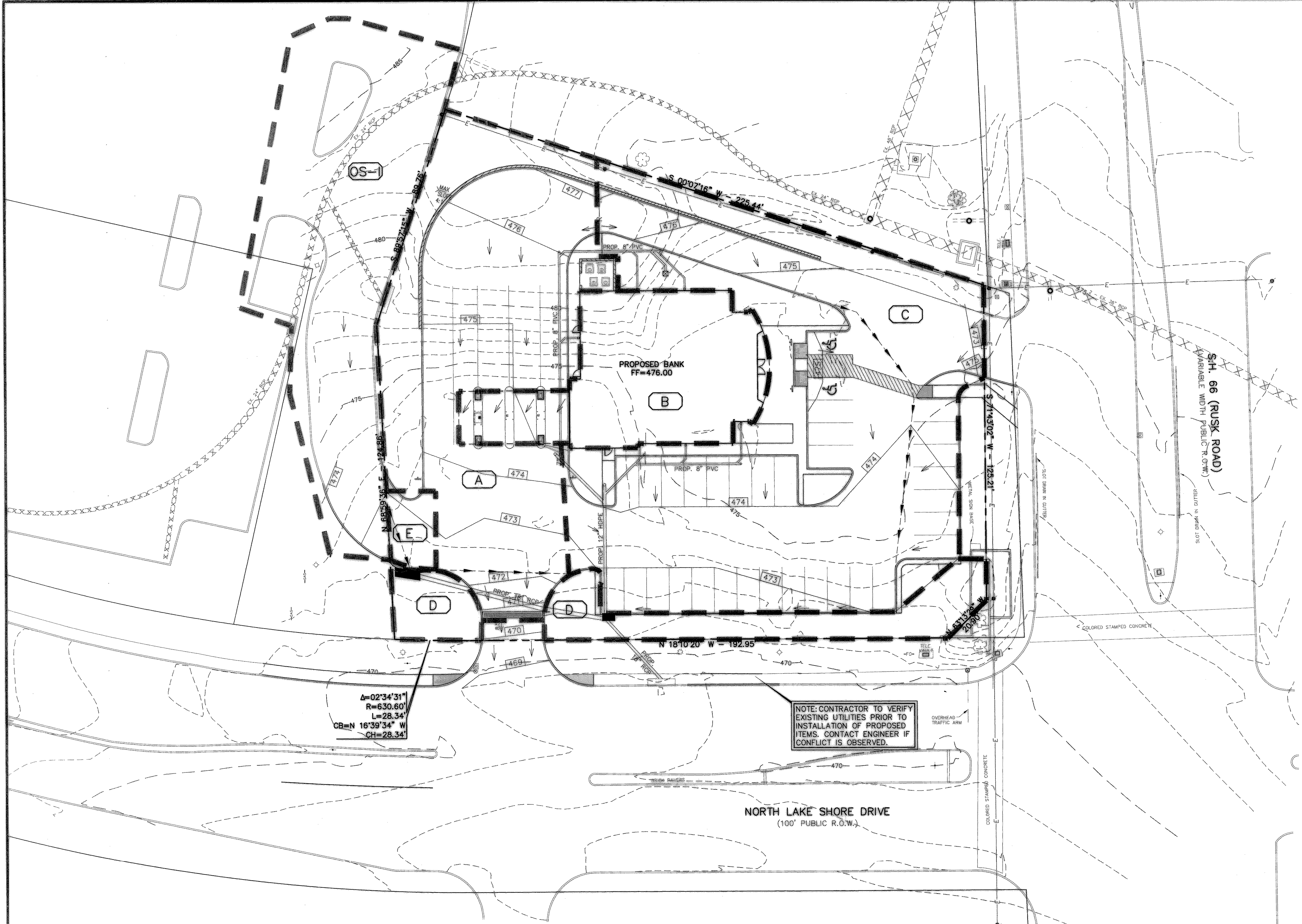
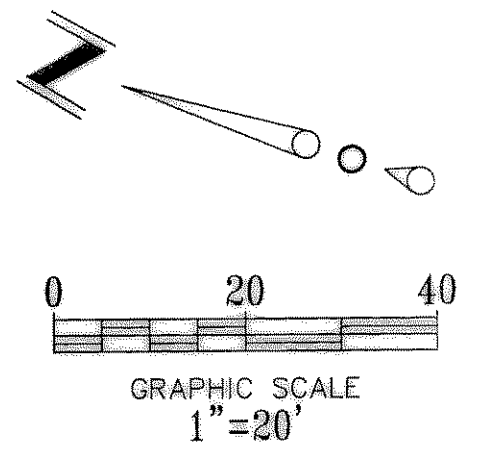


- LEGEND**
- — — — — EXISTING CURB
 - — — — — PROPOSED CURB
 - — — — — PROPOSED STORM PVC PIPE
 - XXXXXXXXXXXX EXISTING STORM PIPE
 - 475 PROPOSED CONTOUR
 - — — — — PROPOSED VALLEY
 - — — — — PROPOSED RIDGE
 - PROPOSED FLOW ARROW
 - — — — — PROPOSED DRAINAGE AREA DIVIDE
 - X AREA DESCRIPTION



$\Delta=02'34'31''$
 $R=630.60'$
 $L=28.34'$
 $CB=N 16'39'34'' W$
 $CH=28.34'$

NOTE: CONTRACTOR TO VERIFY EXISTING UTILITIES PRIOR TO INSTALLATION OF PROPOSED ITEMS. CONTACT ENGINEER IF CONFLICT IS OBSERVED.

BENCHMARK

BENCHMARK: CITY OF ROCKWALL MONUMENT #10, ON MEDIAN OF NORTH LAKESHORE DRIVE NORTH OF INTERSECTION OF NORTH LAKESHORE DRIVE AND NORTH ALAMO STREET, APPROXIMATELY 168 FEET NORTH OF SOUTH END OF MEDIAN / BACK OF CURB.

ELEVATION=524.788'

CITY OF ROCKWALL MONUMENT #11, ON MEDIAN OF NORTH LAKESHORE DRIVE NORTH OF HAVEN HILL COURT, AND SOUTH OF STONEBROOK ROAD, 2.3 FEET NORTHWEST OF SOUTH END OF MEDIAN / BACK OF CURB

ELEVATION=518.832'

CAUTION!!!
 CALL: TEXAS ONE CALL @
 1-800-245-4545
 48 HRS PRIOR TO CONSTRUCTION.

!!! CAUTION !!!
UNDERGROUND UTILITIES

EXISTING UTILITIES AND UNDERGROUND FACILITIES INDICATED ON THESE PLANS HAVE BEEN LOCATED FROM REFERENCE INFORMATION SUPPLIED BY VARIOUS OWNERS OF THE FACILITIES. THE ENGINEER DOES NOT ACCEPT THE RESPONSIBILITY FOR THE UTILITY LOCATIONS SHOWN. IT SHALL BE THE RESPONSIBILITY OF THE CONTRACTOR TO VERIFY BOTH HORIZONTALLY AND VERTICALLY THE LOCATION OF ALL EXISTING UTILITIES AND UNDERGROUND FACILITIES PRIOR TO CONSTRUCTION, TO TAKE NECESSARY PRECAUTIONS IN ORDER TO PROTECT ALL FACILITIES ENCOUNTERED, AND TO NOTIFY THE ENGINEER PROMPTLY OF ALL CONFLICTS OF THE WORK WITH EXISTING FACILITIES. THE CONTRACTOR SHALL PRESERVE AND PROTECT ALL EXISTING UTILITIES FROM DAMAGE DURING CONSTRUCTION. ANY DAMAGE BY THE CONTRACTOR TO EXISTING UTILITIES SHALL BE REPAIRED BY THE CONTRACTOR AT HIS OR HER EXPENSE.

DRAINAGE DATA CHART

DRAINAGE AREA NO.	DRAINAGE AREA (Acres)	C	Tc (min)	I ₁₀₀ (in/hr)	Q ₁₀₀ (cfs)	COMMENTS
A	0.29	0.9	10	9.8	2.6	DRAINS TO GRATE INLET
B	0.12	0.9	10	9.8	1.1	DRAINS TO ROOF DRAINS/STORM SYSTEM
C	0.44	0.9	10	9.8	3.9	DRAINS TO 5" CURB INLET
D	0.09	0.9	10	9.8	0.8	DRAINS TO LAKE SHORE DRIVE
E	0.01	0.9	10	9.8	0.1	DRAINS TO 5" CURB INLET
OS-1	0.47	0.9	10	9.8	4.1	DRAINS OFFSITE

DRAINAGE CRITERIA

Q=C I A
 I₁₀₀=9.8 in/hr
 t_c=10 min.
 C=0.90

AS-BUILT

NOTE: THESE PLANS HAVE BEEN REVISED TO CONFORM WITH CONSTRUCTION RECORDS PROVIDED BY CONTRACTOR.



DRAINAGE AREA MAP
CHASE BANK-S.H. 66 & LAKE SHORE DRIVE
 CITY OF ROCKWALL
 ROCKWALL COUNTY, TEXAS

	DATE	08/28/08
	SCALE	1"=20'
	JOB NO.	0DD07012
	SHEET	C4
	1601 E. Lamar Blvd, Suite 210 Arlington, Texas 76011 Phone 817.794.0202 Fax 817.548.8430	

Copyright 2008, O'Donald Engineering, Inc. All Rights Reserved. No modification or use of this drawing without the express written permission of O'Donald Engineering, Inc.

O'DONALD ENGINEERING, L.L.C. 1601 E. LAMAR BLVD., SUITE 210, ARLINGTON, TEXAS 76011