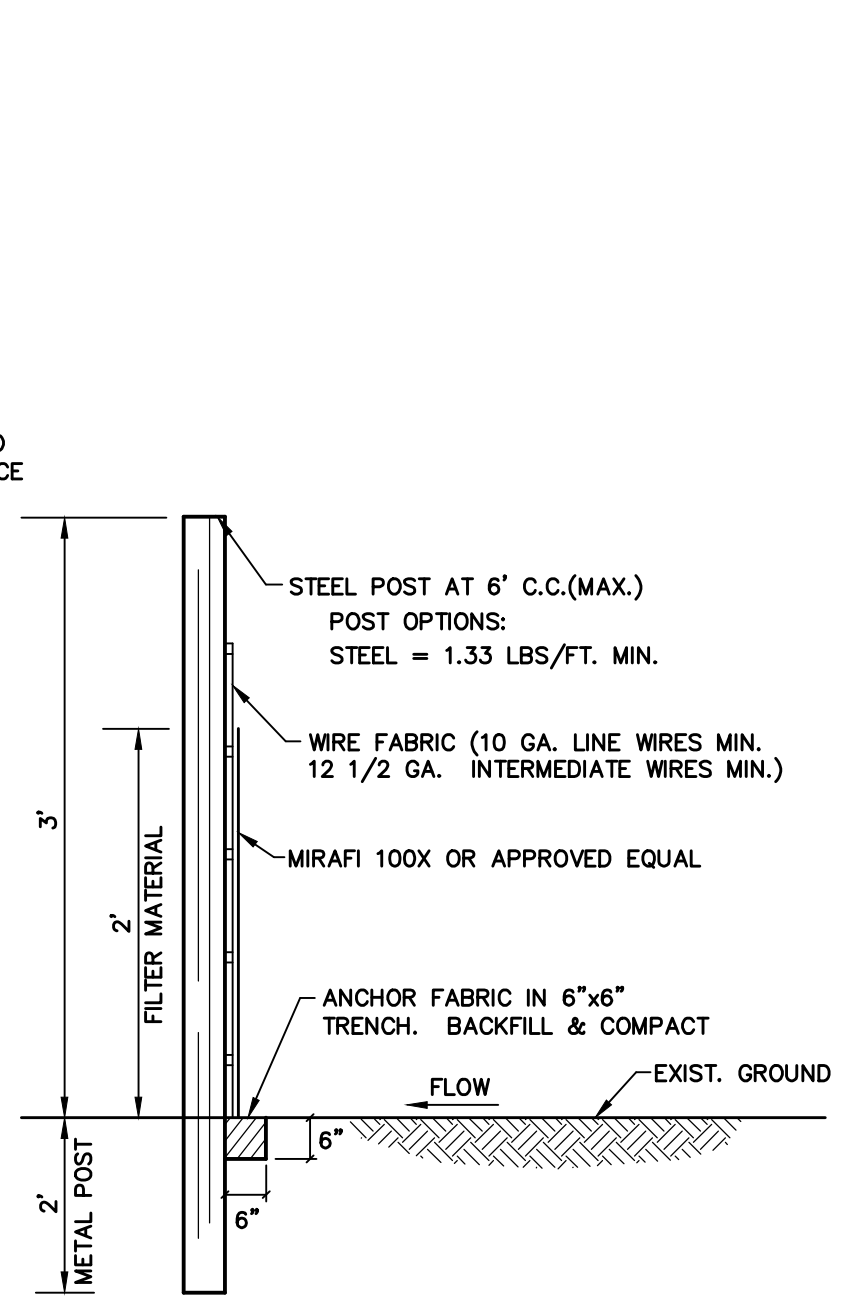
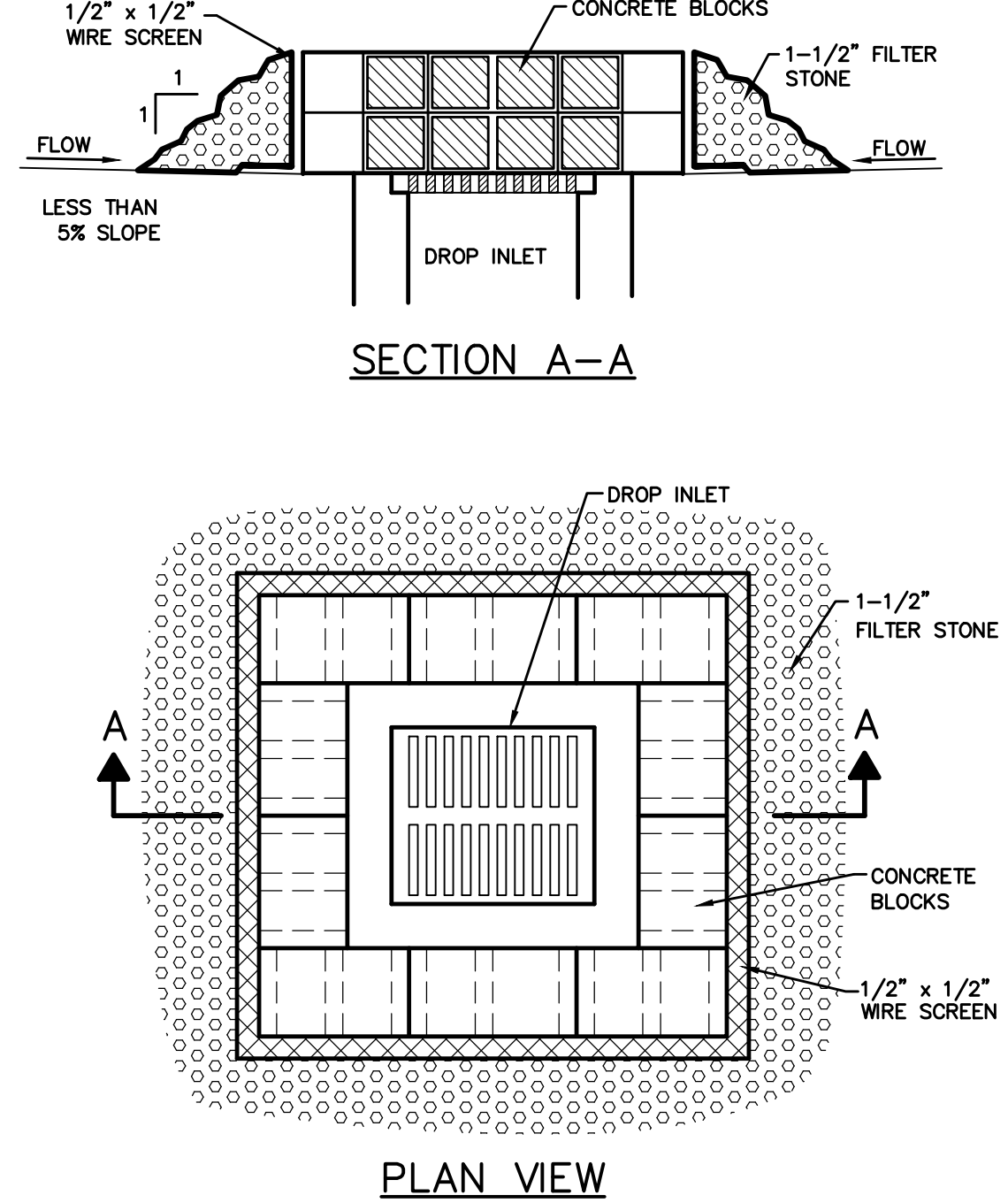


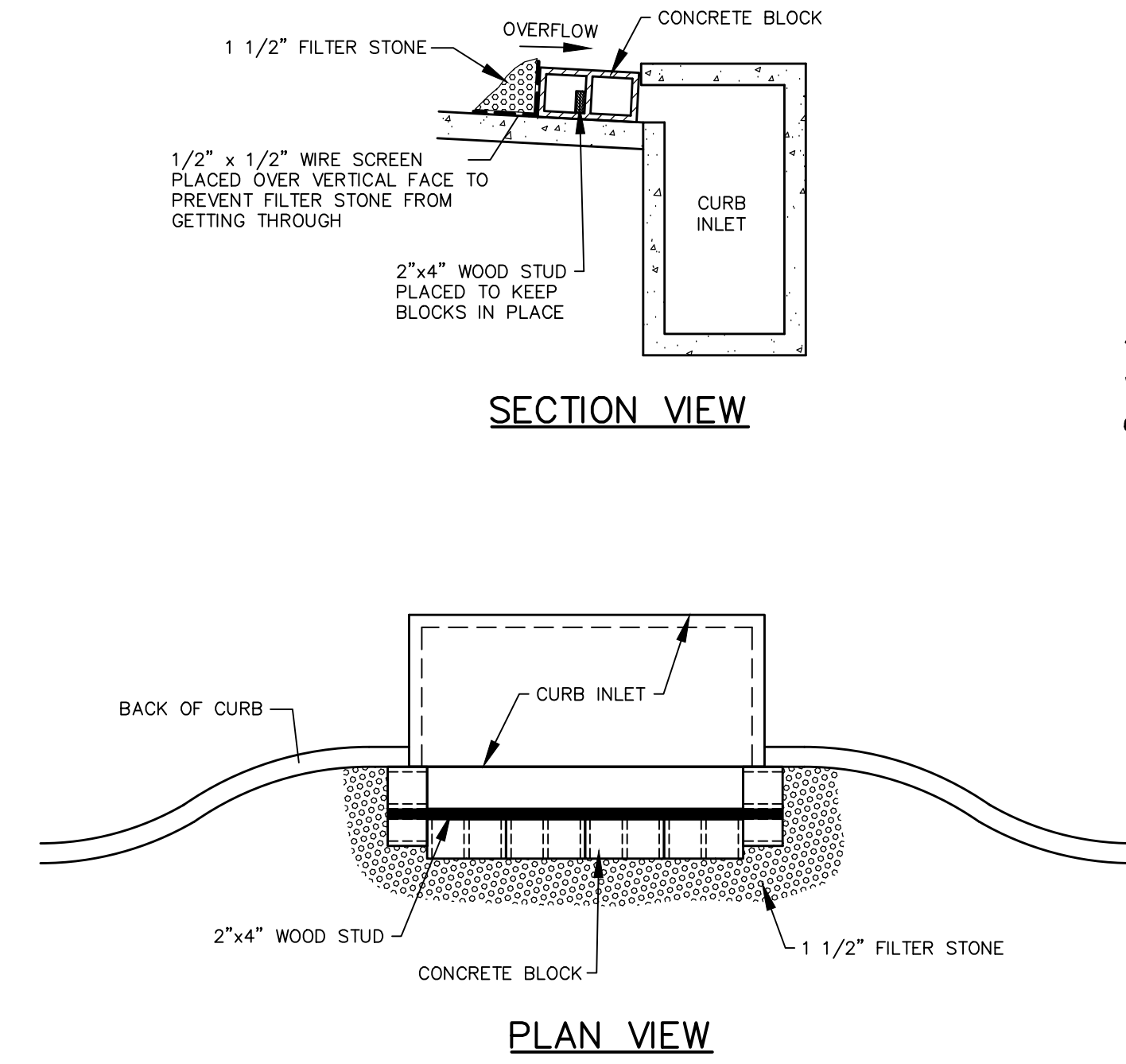
**1 STABILIZED CONSTRUCTION ENTRANCE**  
NOT TO SCALE



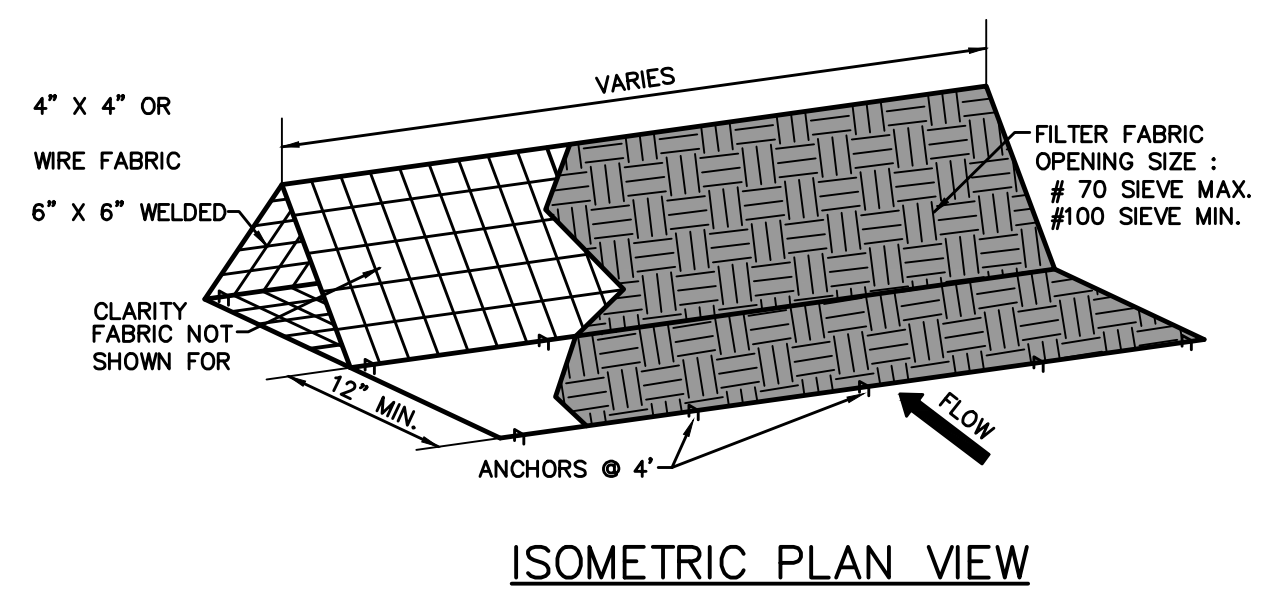
**2 SILT FENCE**  
NOT TO SCALE



**3 DROP INLET PROTECTION**  
NOT TO SCALE

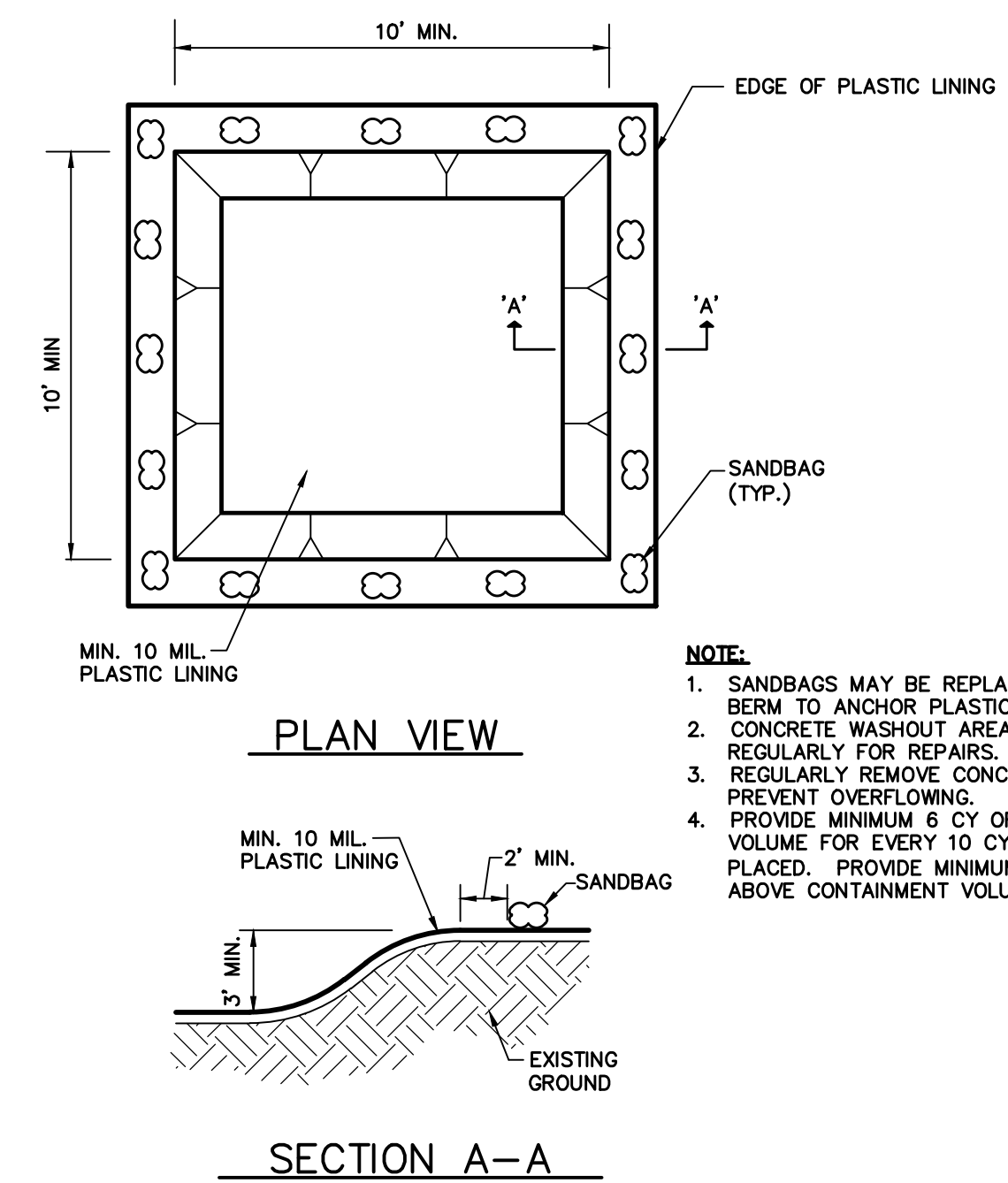


**4 CURB INLET PROTECTION**  
NOT TO SCALE

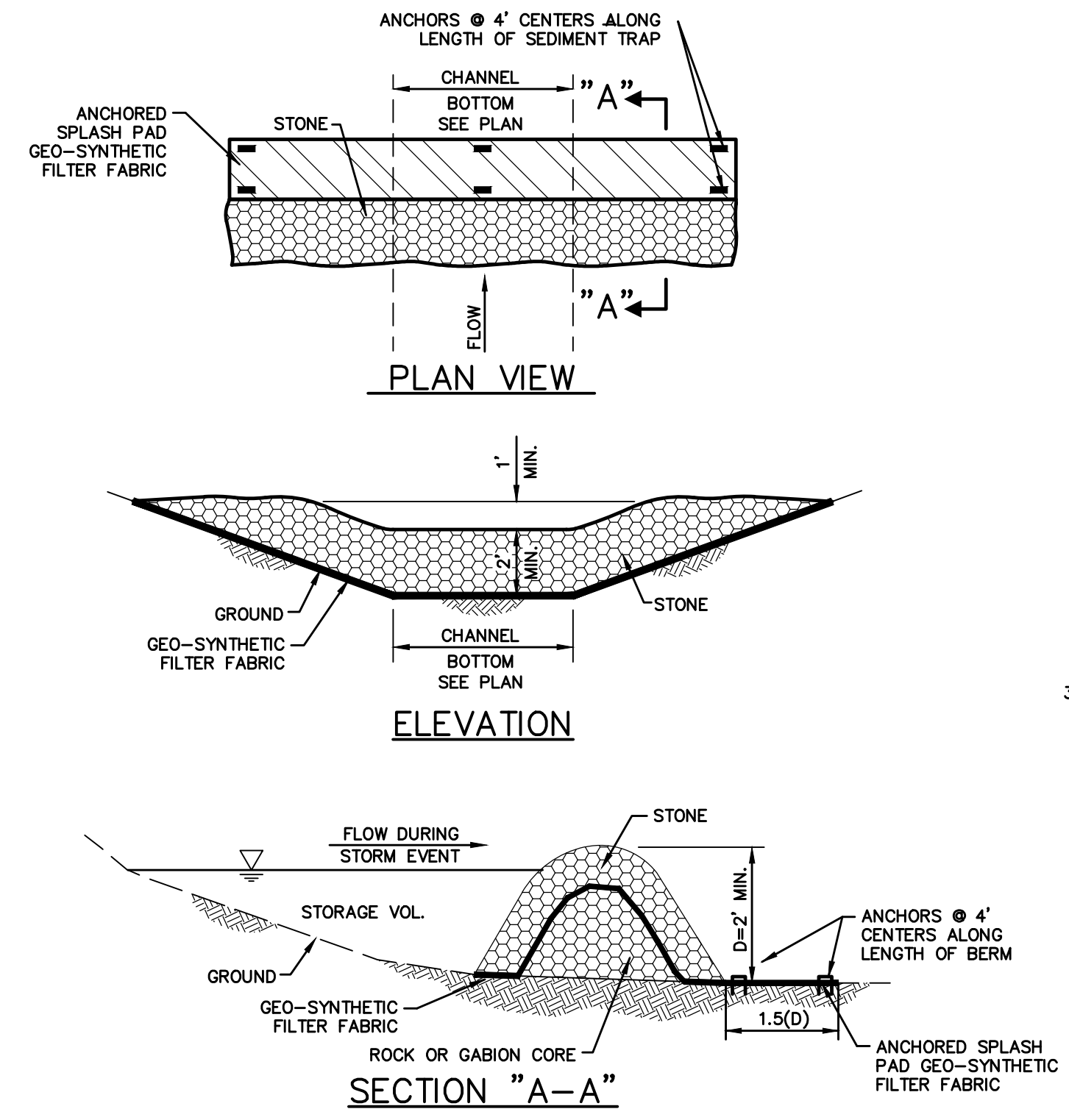


**5 TRIANGULAR SEDIMENT FILTER DIKE**  
NOT TO SCALE

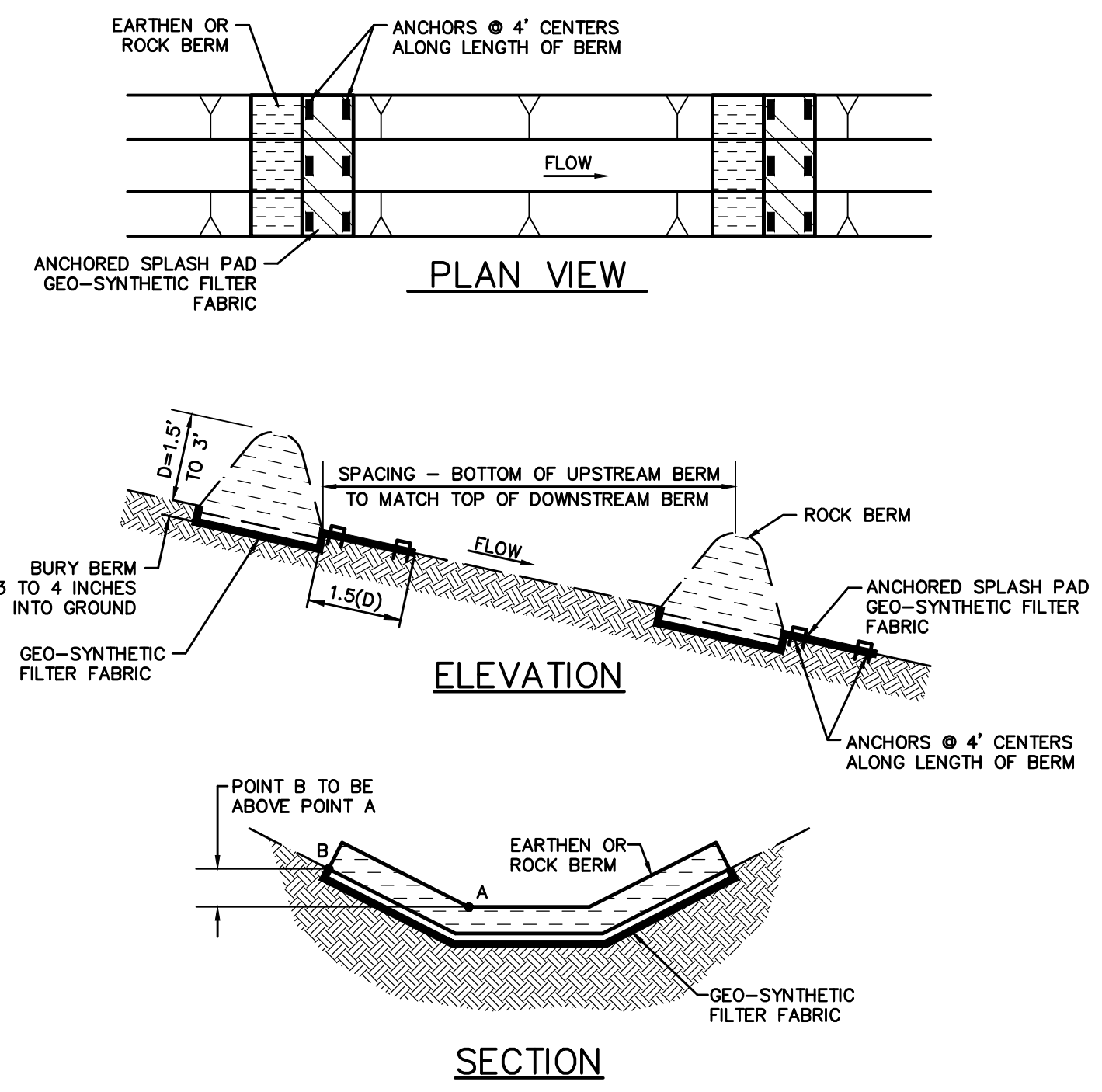
NOTES:  
1. DIKES ARE TO BE INSTALLED ALONG A LINE OF CONSTANT ELEVATION (ALONG A CONTOUR LINE).  
2. MAXIMUM SLOPE PERPENDICULAR TO THE DIKE IS 1:1.  
3. MAXIMUM DRAINAGE FLOW TO THE DIKE SHALL BE 11 CFS PER 100 LINEAR FEET OF DIKE.  
4. MAXIMUM DISTANCE OF FLOW TO DIKE SHOULD BE 200 FEET OR LESS.  
5. MAXIMUM CONCENTRATED FLOW TO DIKE SHALL BE 1 CFS.  
6. IF 50% OR LESS OF SOIL, BY WEIGHT, PASSES THE U.S. STANDARD SIEVE No. 200, SELECT THE EQUIVALENT OPENING SIZE (E.O.S.) TO RETAIN 85% OF THE SOIL.



**6 CONCRETE WASHOUT AREA**  
NOT TO SCALE



**7 STONE OUTLET SEDIMENT TRAP**  
NOT TO SCALE



**8 CHECK DAMS**  
NOT TO SCALE

NOTE: ALL RESPONSIBILITY FOR ADEQUACY OF DESIGN REMAINS WITH THE DESIGN ENGINEER. THE CITY OF ROCKWALL, IN REVIEWING AND RELEASING PLANS FOR CONSTRUCTION, ASSUMES NO RESPONSIBILITY FOR ADEQUACY OR ACCURACY OF DESIGN.

09/29/2016 11:44 AM  
 6/2/2014 11:44 AM  
 M:\DWG-32\3273-14.192\DWG\CIVIL\_C3D\_2012\3273-14.192EP.DWG

**RECORD DRAWING**

THE SIGNED AND SEALED CONSTRUCTION DOCUMENT HAS BEEN REVISED TO REFLECT CONSTRUCTION RECORDS MAINTAINED AND PROVIDED BY THE CONTRACTOR FOR THIS PROJECT. THE INFORMATION SHOWN ON THIS RECORD DRAWING, WHICH WAS PROVIDED BY THE CONTRACTOR, OR OTHERS NOT ASSOCIATED WITH THE DESIGN ENGINEER, CANNOT BE VERIFIED FOR ACCURACY OR COMPLETENESS. PACHECO KOCH SHALL ASSUME NO LIABILITY FOR ANY CHANGES MADE DURING CONSTRUCTION THAT WERE NOT SPECIFICALLY APPROVED BY THE ENGINEER PRIOR TO CONSTRUCTION. THE SEALED CONSTRUCTION DRAWINGS ARE ON FILE AT THE OFFICES OF PACHECO KOCH.

ATTESTED BY: *Steven Heilbrun*  
 SIGNATURE: \_\_\_\_\_  
 ENGINEER OF RECORD: STEVEN HEILBRUN, P.E.  
 CONTRACTOR: BOB MOORE CONSTRUCTION, INC.  
 DATE REVISED: 09/29/2016

NO.	DATE	REVISION
△	09/29/2016	RECORD DRAWINGS

**Pacheco Koch**  
 7557 RAMBLER ROAD, SUITE 1400  
 DALLAS, TX 75231 972.235.3031  
 TX REG. ENGINEERING FIRM F-14439  
 TX REG. SURVEYING FIRM LS-101938-05

**EROSION CONTROL DETAILS**

**CHANNELL BTS**

**NWC JUSTIN RD. & JOHN KING BLVD.**

**CHANNELL SUBDIVISION LOT 2, BLOCK A**

**CITY OF ROCKWALL, ROCKWALL COUNTY, TEXAS**

DESIGN	DRAWN	DATE	SCALE	NOTES	FILE	NO.
SMH/MG	SMH/MG	NOV 2014	NTS			<b>C7.2</b>

CHANNELL BTS-LOT 2 BLOCK A CHANNELL SUBDIVISION