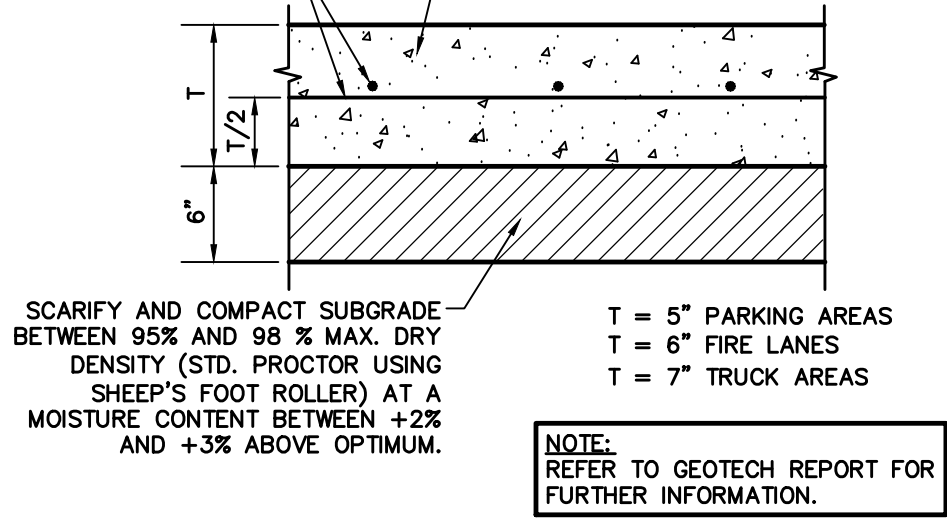


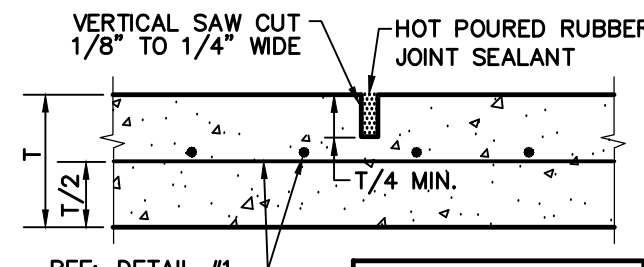
NO. 3 BARS ON 24" CTRS. BOTH WAYS ON PARKING AREAS AND FIRE LANES. NO. 3 BARS ON 18" CTRS. BOTH WAYS ON TRUCK AREAS.

3600 PSI CONCRETE MIX (MIN. 6.5 SACK) PARKING AREAS AND FIRE LANES AT 28 DAYS. 4000 PSI CONCRETE MIX (MIN. 6.5 SACK) TRUCK AREAS AT 28 DAYS.

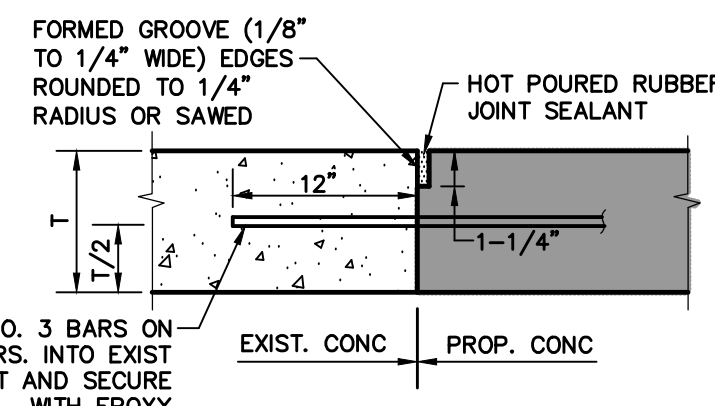


1 CONCRETE PAVEMENT SECTION
NOT TO SCALE

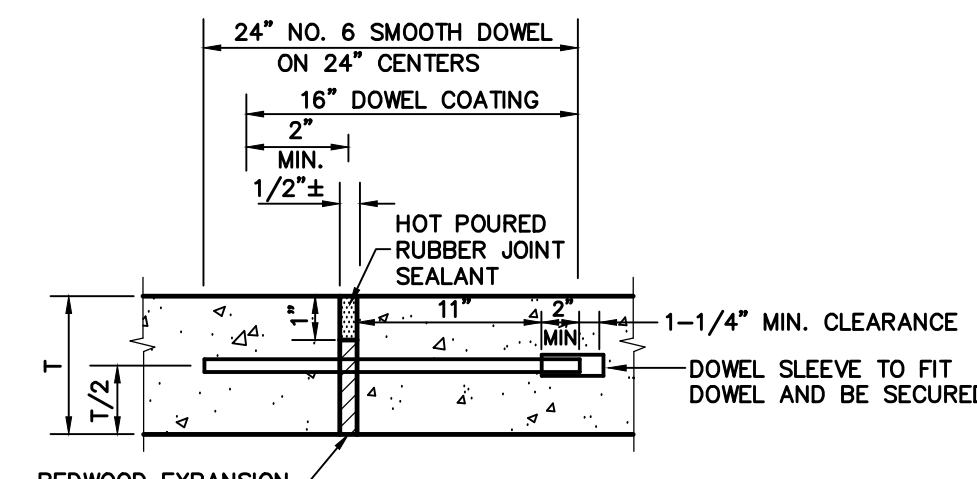
PROVIDE SAW JOINT ON CONSTRUCTION JOINT AT ALL CHANGES IN PAVEMENT THICKNESS



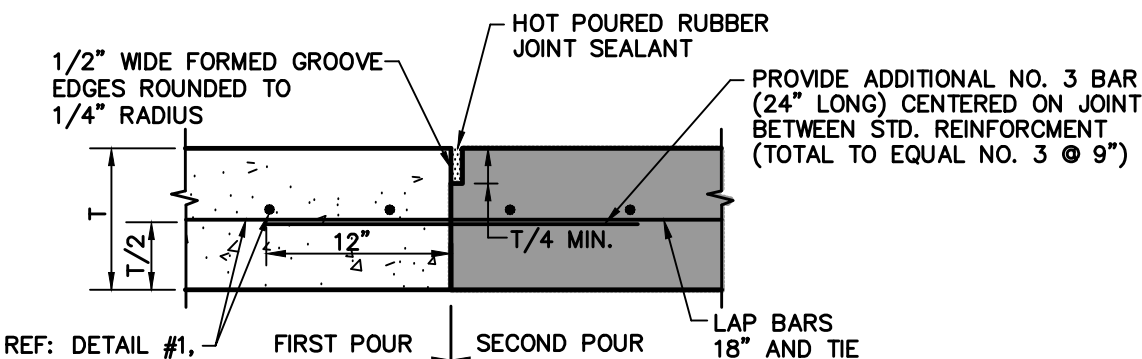
2 SAWED DUMMY JOINT
NOT TO SCALE



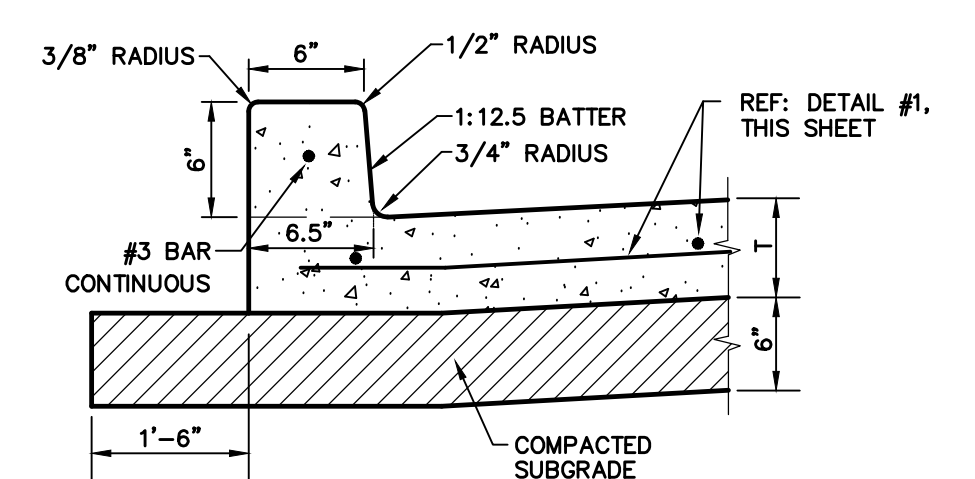
3 PAVEMENT CONNECTION
NOT TO SCALE



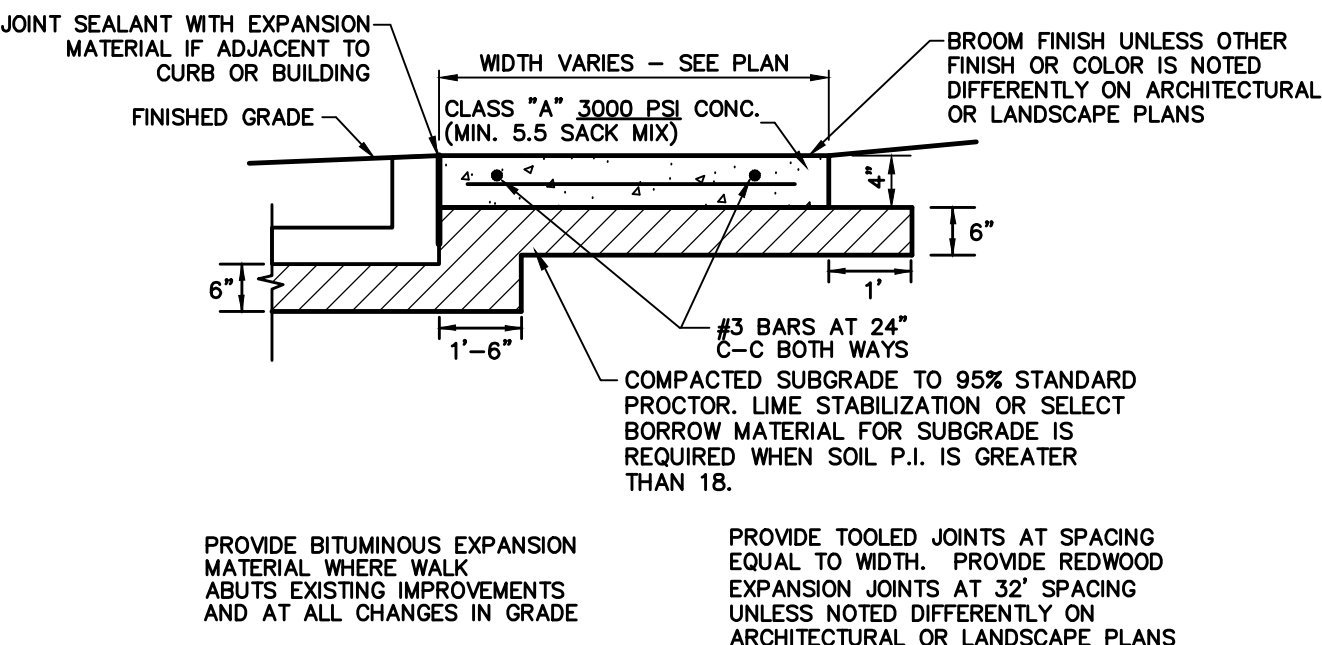
4 EXPANSION JOINT
NOT TO SCALE



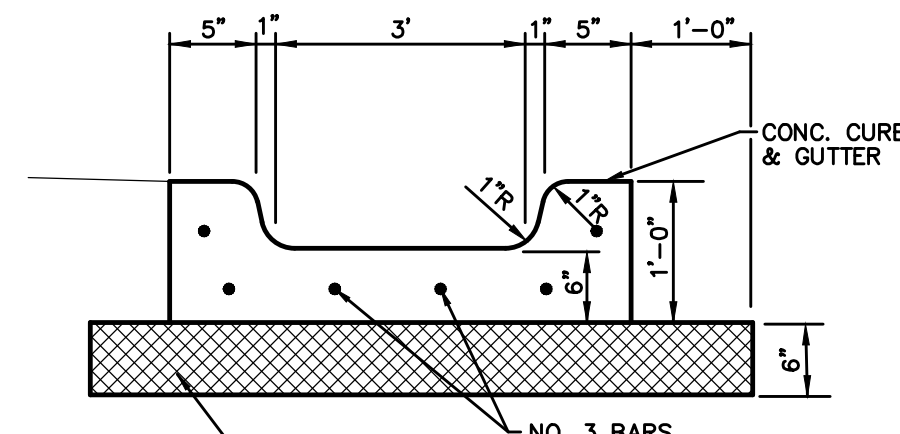
5 CONSTRUCTION JOINT
NOT TO SCALE



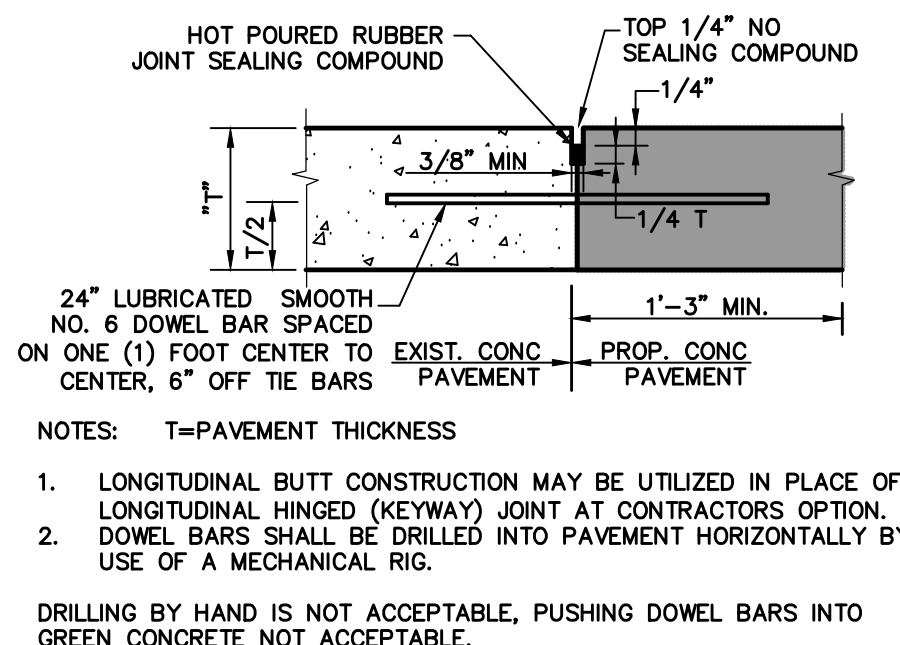
6 INTEGRAL CURB
NOT TO SCALE



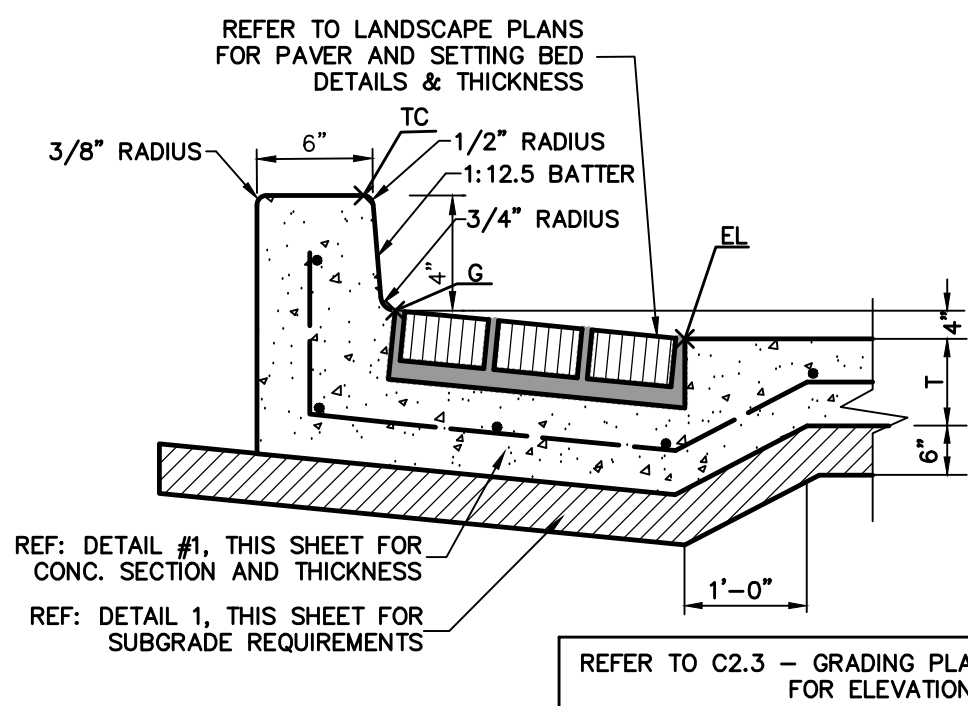
7 CONCRETE WALK PRIVATE
NOT TO SCALE



8 FLUME DETAIL
NOT TO SCALE



9 LONGITUDINAL BUTT JOINT
NOT TO SCALE



18 MAIN ENTRY PLAZA CENTER CIRCLE CURB
NOT TO SCALE

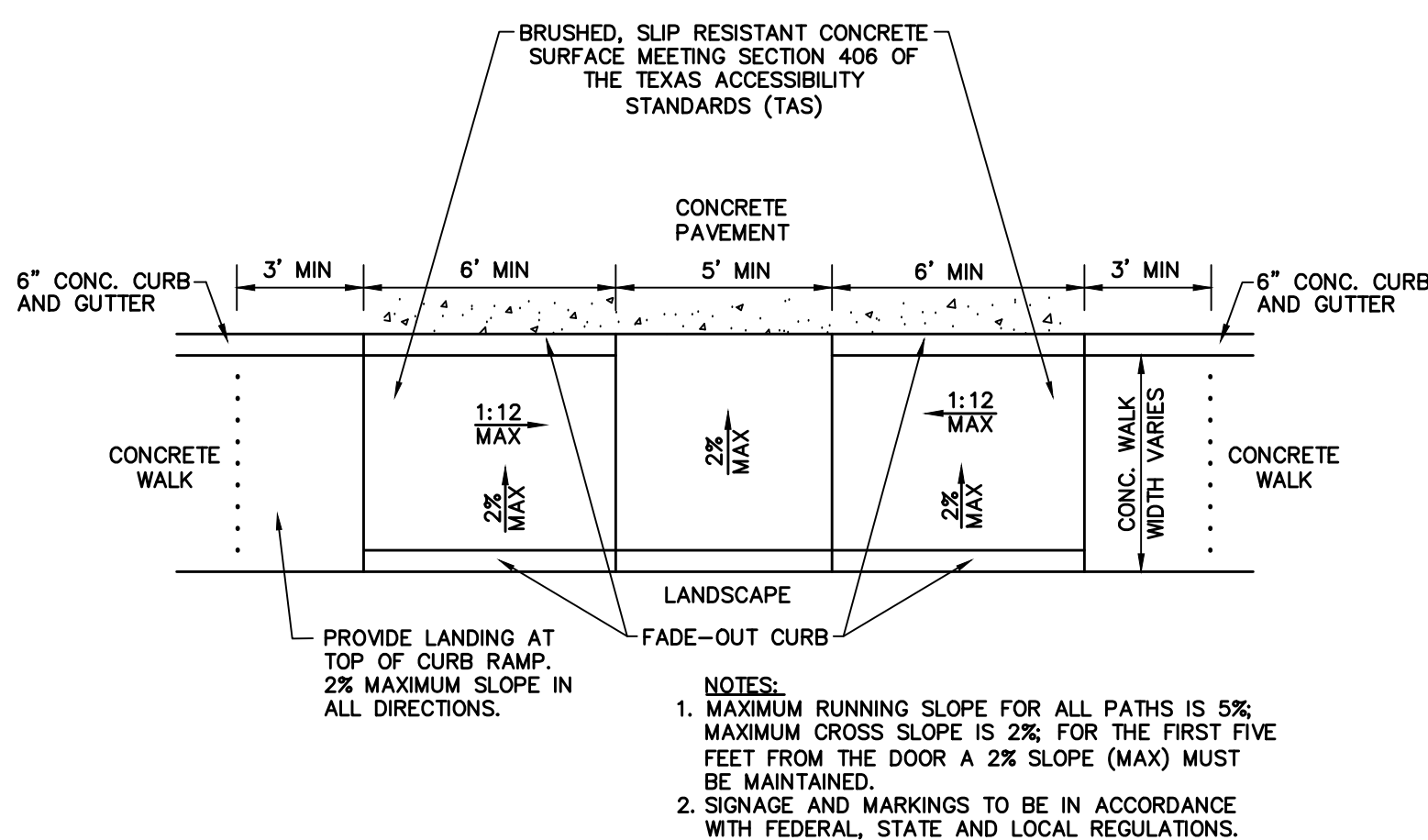
$$D_{50} = \frac{V_w + V_{w'}}{2G(\delta_s - \delta_w)C}$$

$V_w = 5.37 \text{ ps}$
 $C = 0.86 \text{ (HIGH TURBULENCE), } 1.2 \text{ (LOW TURBULENCE)}$
 $\delta_w = 62.4 \text{ lb/ft}^3$
 $\delta_s = 155 \text{ lb/ft}^3$
 $G = 32.2 \text{ ft/s}^2$

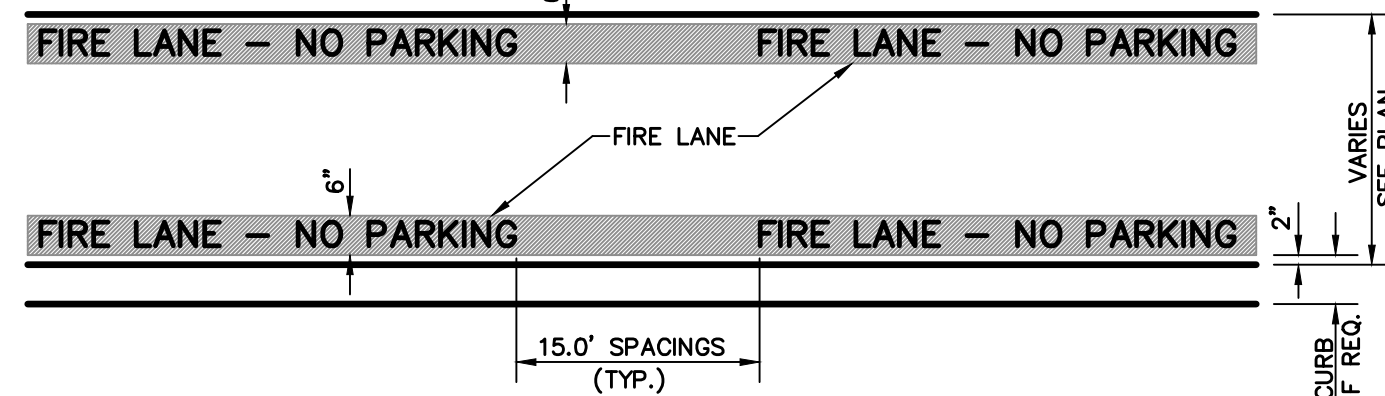
RESULTS
 $D_{50} = 6"$

NOTE:
 1. EQUATION 1 CAME FROM THE US ARMY ENGINEERS WATERWAYS EXPERIMENT STATION, CE, HYDRAULIC DESIGN CRITERIA, SHEET 712-1, 1970

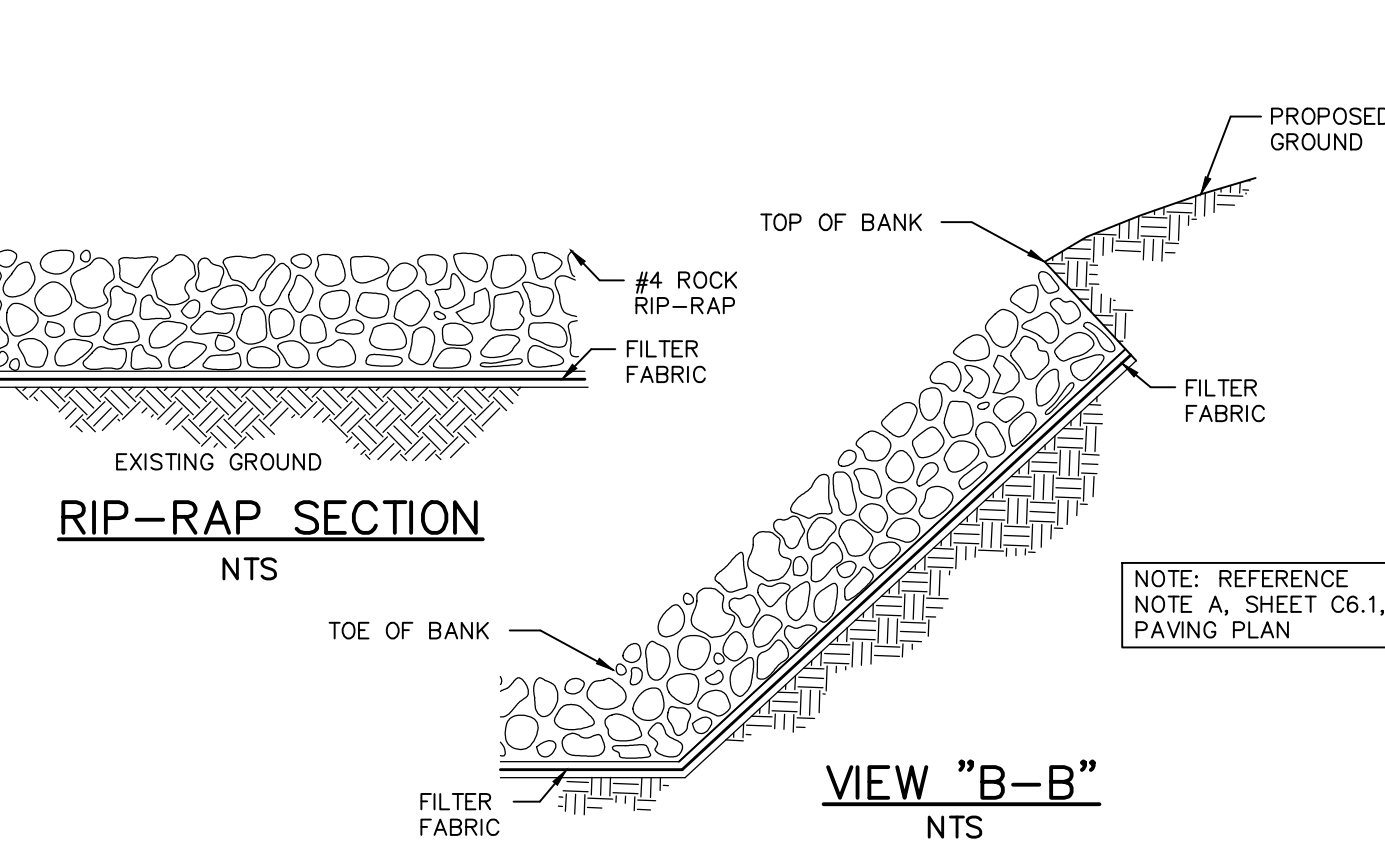
RIP-RAP GRADATIONS	
12" THICKNESS OF RIP-RAP	
SIEVE SIZE SQUARE MESH	PERCENT PASSING
15 INCH	100
12 INCH	70 - 100
8 INCH	45 - 75
6 INCH	30 - 55
3 INCH	10 - 30
1-1/2 INCH	0 - 10



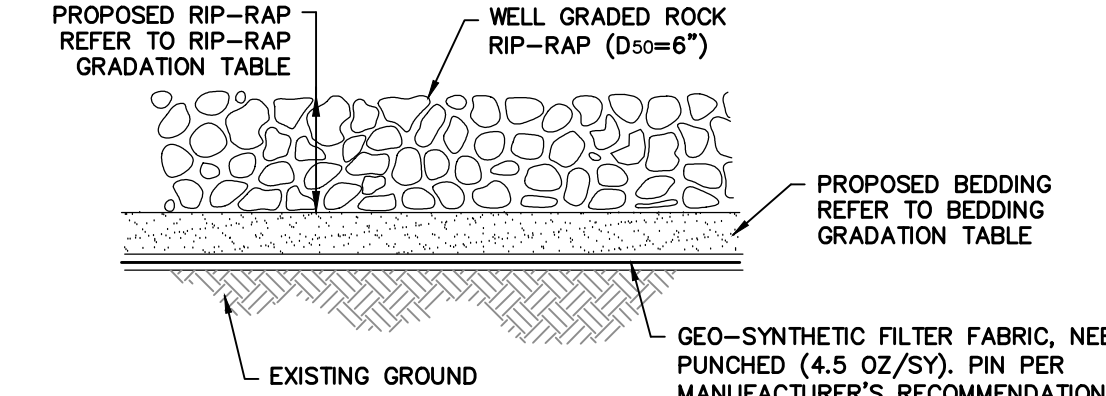
10 TWO-WAY CURB RAMP
NOT TO SCALE (PRIVATE ONLY)



11 FIRE LANE STRIPING
NOT TO SCALE



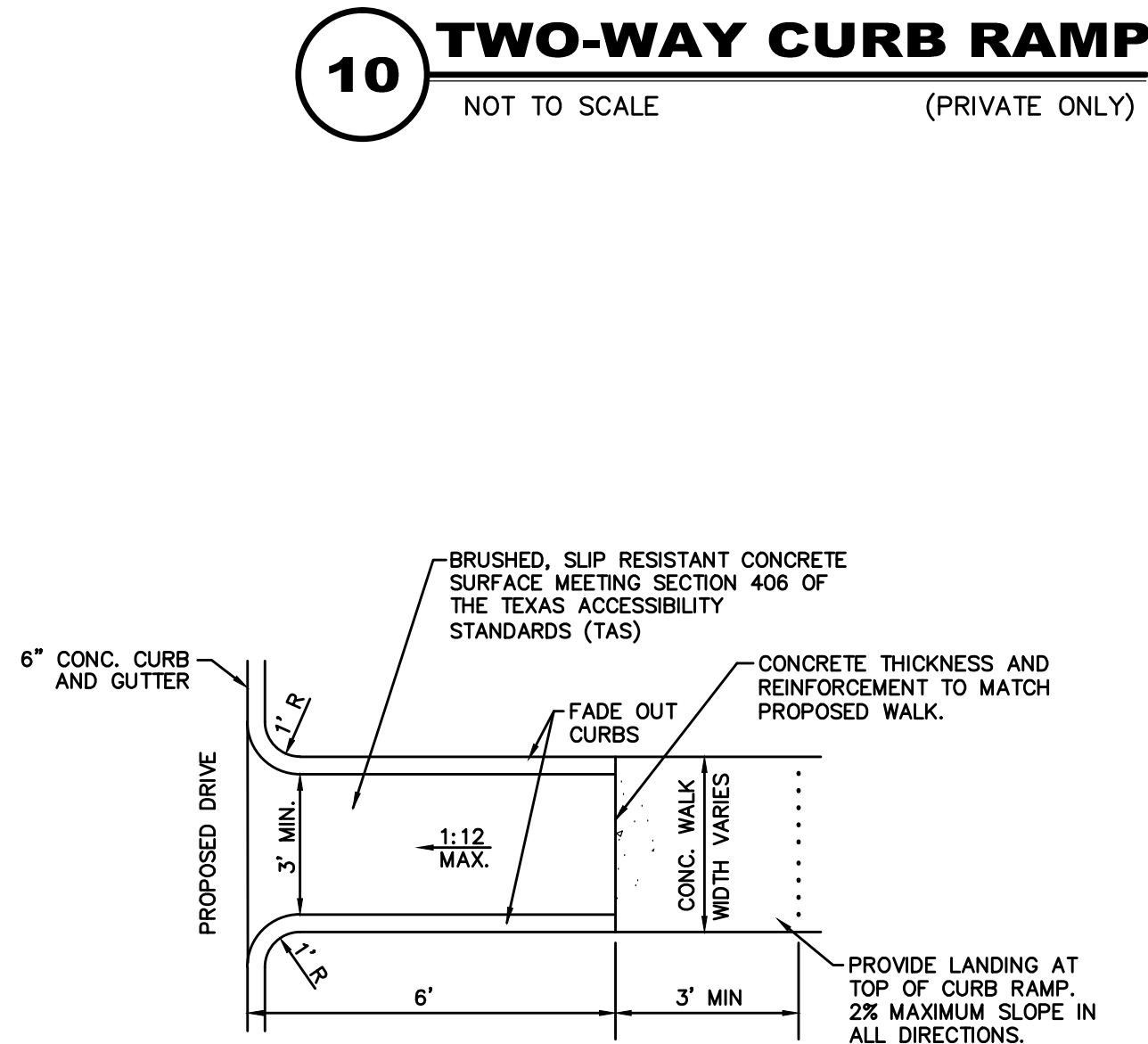
12 TYPICAL RIP-RAP X-SECTIONS
NOT TO SCALE



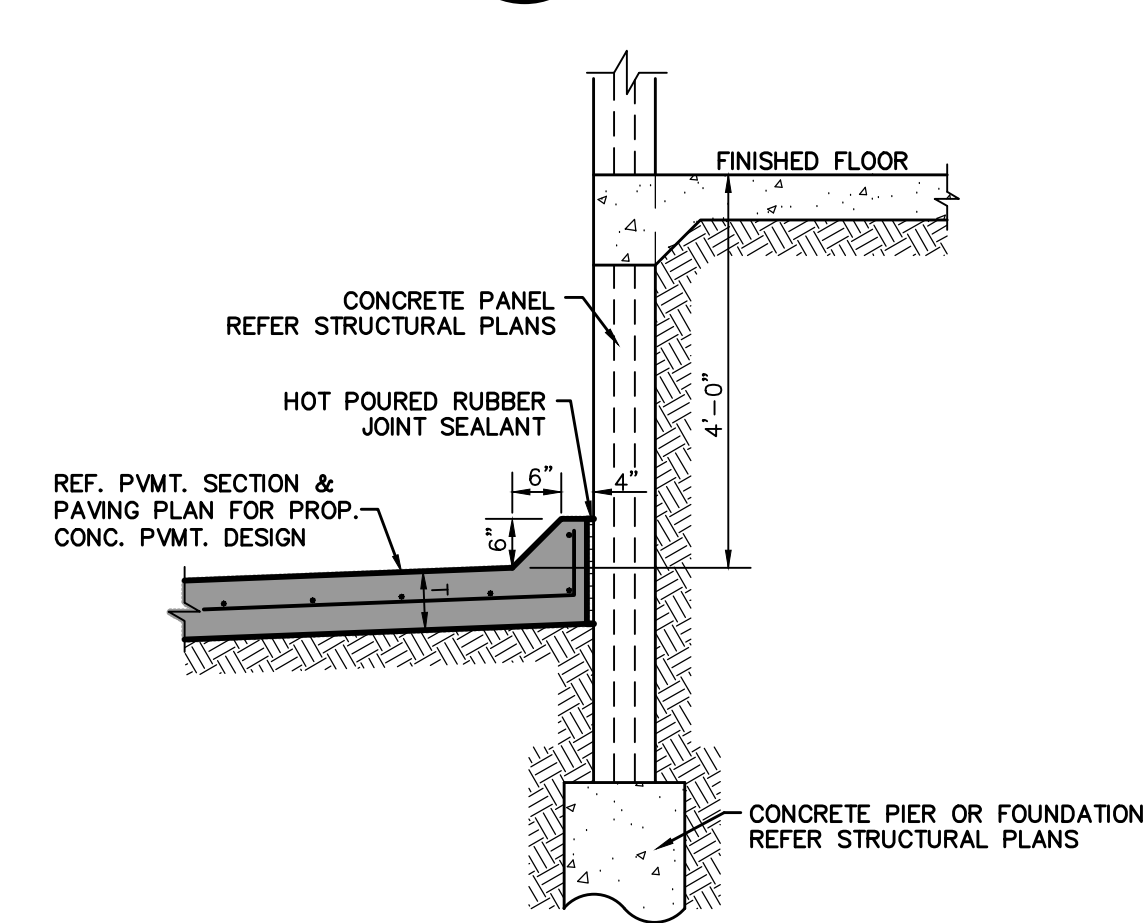
16 RIP-RAP DETAIL
NOT TO SCALE

DRY STONE RIP-RAP SPECIFICATIONS & GRADING
 THE FOLLOWING SPECIFICATIONS AND GRADATIONS ARE MINIMUMS TO BE USED IN CONSTRUCTION.
 1. USE FILED OR QUARRY DRY STONE RIP-RAP.
 2. MINIMUM BED DEPTH OF RIP-RAP SHALL BE 6".
 3. STONES SHALL BE PLACED IN A SINGLE LAYER WITH CLOSED JOINTS. THE UPRIGHT AXIS OF THE STONES SHALL BE NEARLY PERPENDICULAR TO THE EMBANKMENT SLOPE. THE COURSES SHALL BE PLACED FROM THE BOTTOM OF THE EMBANKMENT UPWARDLY, WITH LARGER STONES BEING PLACED IN THE LOWER COURSES. OPEN JOINTS SHALL BE FILLED WITH SPALLS. STONES THAT PROJECT MORE THAN THE ALLOWABLE AMOUNT IN THE FINISHED WORK SHALL BE REPLACED, EMBEDDED DEEPER, OR CHIPPED.
 4. RIP RAP SHALL BE STOCKPILED AND APPROVED PRIOR TO INSTALLATION.

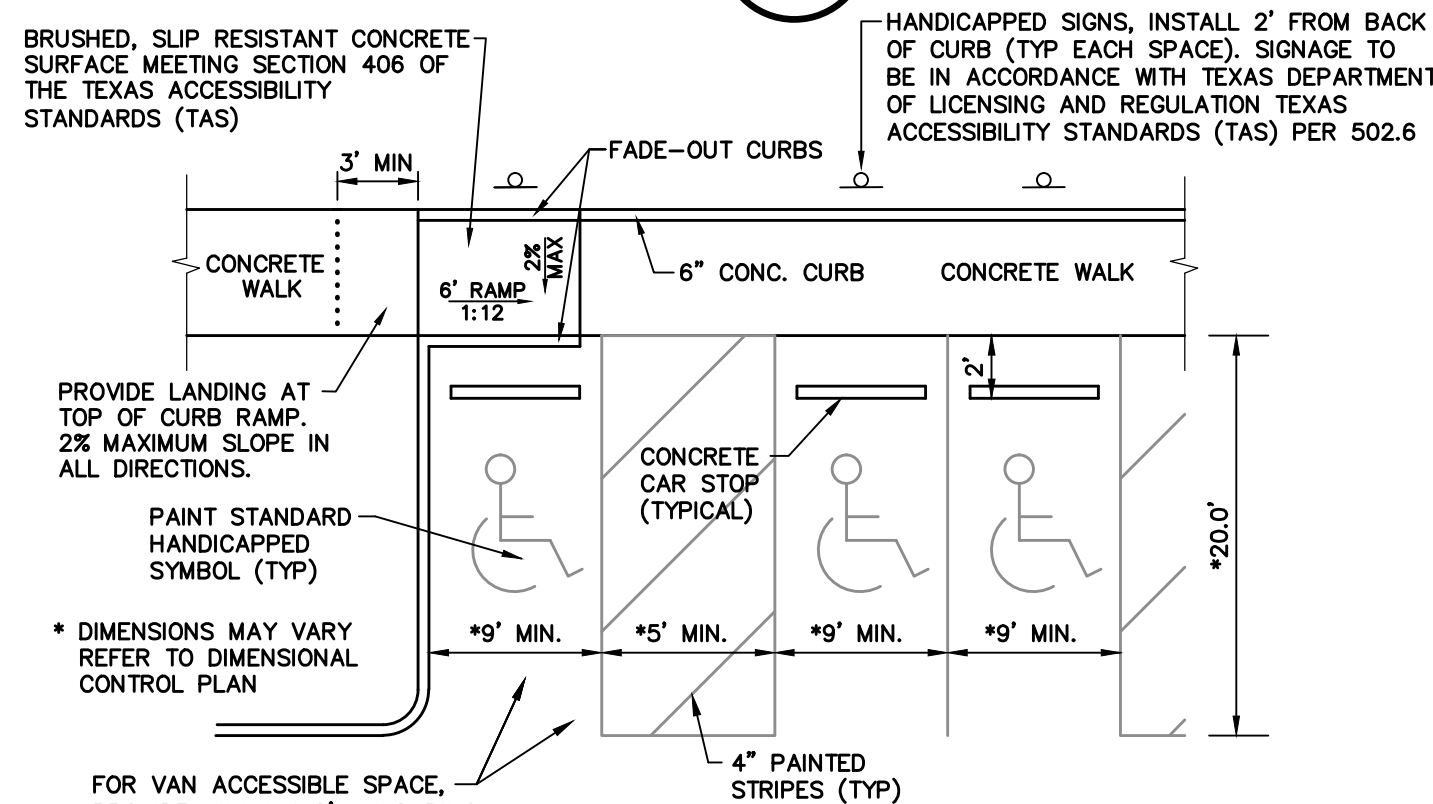
BEDDING GRADATIONS	
6" THICKNESS OF BEDDING	
SIEVE SIZE SQUARE MESH	PERCENT PASSING
3 INCH	100
1-1/2 INCH	55 - 100
3/4 INCH	25 - 60
3/8 INCH	5 - 30
No. 4	0 - 10



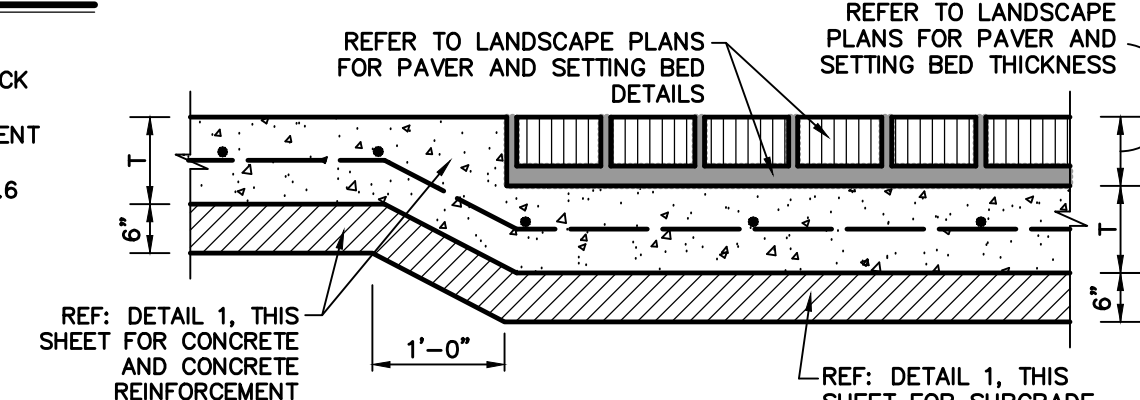
13 SINGLE CURB RAMP
NOT TO SCALE (PRIVATE ONLY)



14 RAISED PAVEMENT AT TRUCK DOCK
NOT TO SCALE



15 90° HANDICAP PARKING & SINGLE CURB RAMP
NOT TO SCALE (PRIVATE ONLY)



17 BRICK PAVERS ON CONCRETE PAVEMENT
NOT TO SCALE

RECORD DRAWING
 THE SIGNED AND SEALED CONSTRUCTION DOCUMENT HAS BEEN REVISED TO REFLECT CONSTRUCTION RECORDS MAINTAINED AND PROVIDED BY THE CONTRACTOR FOR THIS PROJECT. THE INFORMATION SHOWN ON THIS RECORD DRAWING, WHICH WAS PROVIDED BY THE CONTRACTOR, OR OTHERS NOT ASSOCIATED WITH THE DESIGN ENGINEER, CANNOT BE VERIFIED FOR ACCURACY OR COMPLETENESS. PACHECO KOCH SHALL ASSUME NO LIABILITY FOR ANY CHANGES MADE DURING CONSTRUCTION THAT WERE NOT SPECIFICALLY APPROVED BY THE ENGINEER PRIOR TO CONSTRUCTION. THE SEALED CONSTRUCTION DRAWINGS ARE ON FILE AT THE OFFICES OF PACHECO KOCH.

ATTESTED BY: *Steven Heilbrun*
 ENGINEER OF RECORD: STEVEN HEILBRUN, P.E.
 CONTRACTOR: BOB MOORE CONSTRUCTION, INC.
 DATE REVISED: 09/29/2016

NO.	DATE	REVISION
09/29/2016		RECORD DRAWINGS
04/08/2016		ENTRY DRIVE REVISIONS
11/16/2015		CIRCULAR DRIVE REVISIONS
09/24/2015		ASI 26

Pacheco Koch
 7557 RAMBLER ROAD, SUITE 1400
 DALLAS, TX 75231 972.235.3031
 TX REG. ENGINEERING FIRM F-14439
 TX REG. SURVEYING FIRM LS-101938-05

PAVING DETAILS
CHANNELL BTS
NWC JUSTIN RD. & JOHN KING BLVD.
CHANNELL SUBDIVISION LOT 2, BLOCK A
CITY OF ROCKWALL, ROCKWALL COUNTY, TEXAS

DESIGN	DRAWN	DATE	SCALE	NOTES	FILE	NO.
SMH/MG	MG	NOV 2014	NTS			C6.2

RODRIGUEZ - 11:44 AM 6/7/2014 - 14.192.192P.DWG
 M:\DWG-32\3273-14.192.192P.DWG C:\2012\3273-14.192P.DWG

CHANNELL BTS-LOT 2 BLOCK A CHANNELL SUBDIVISION