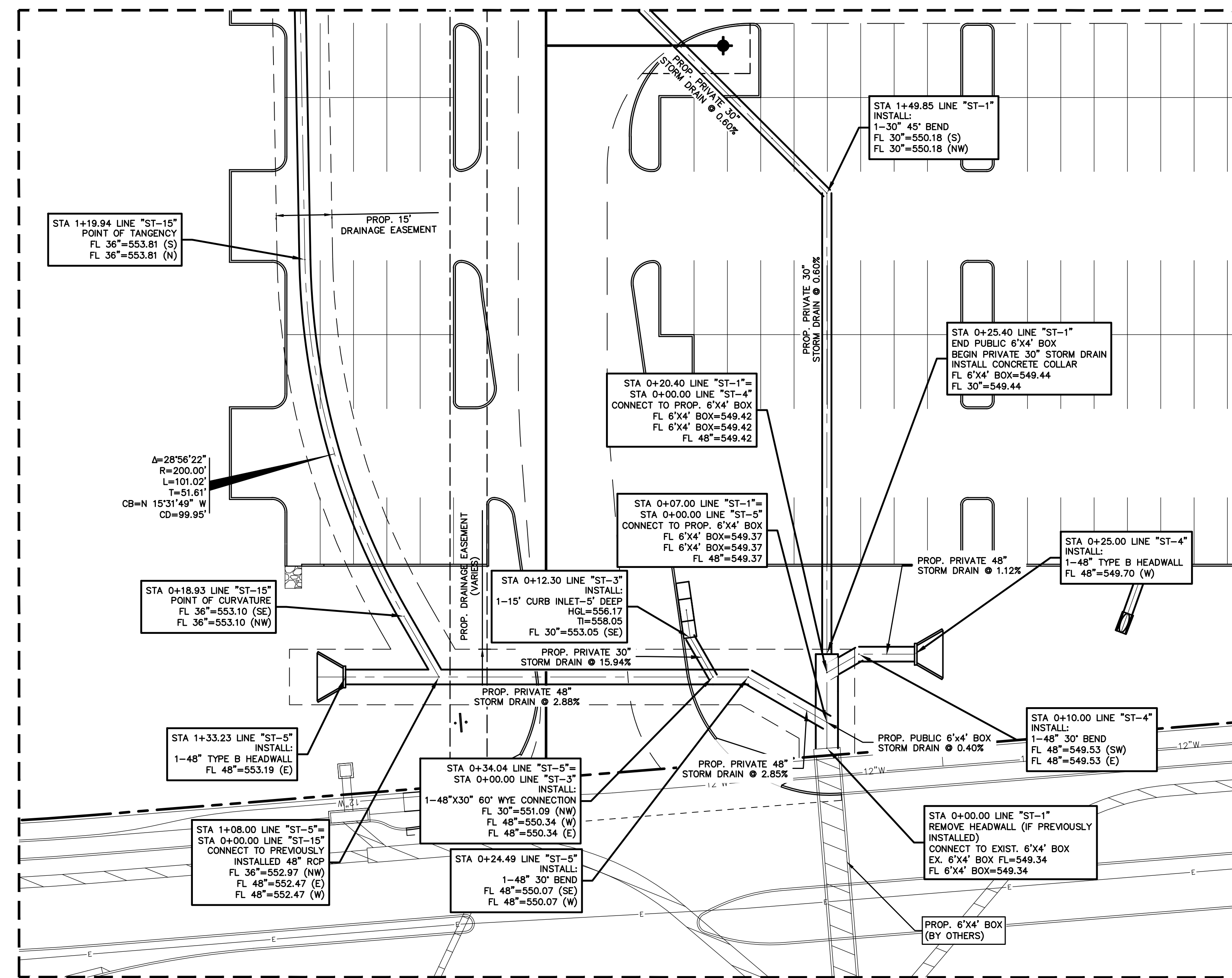
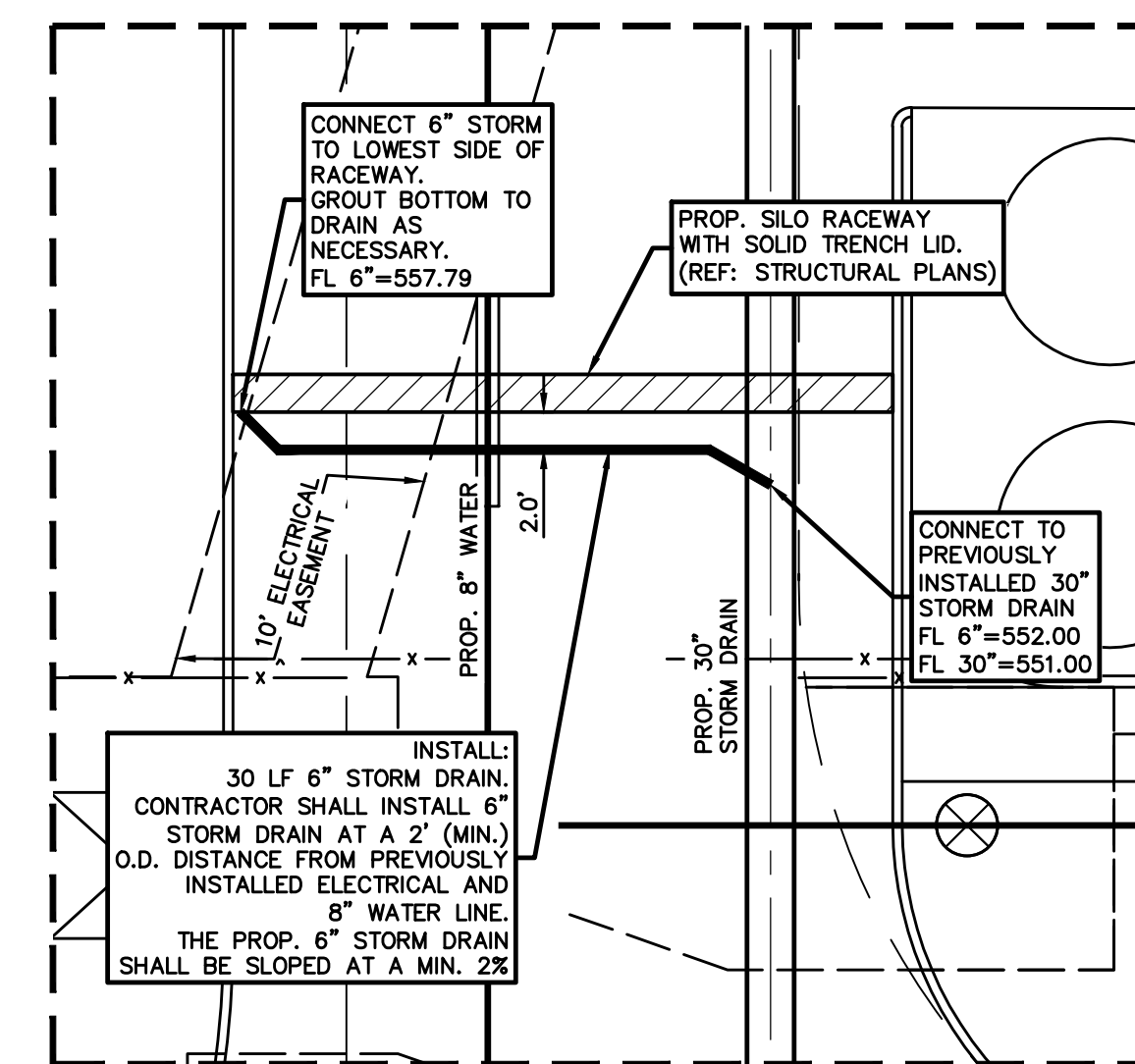


LEGEND

B	BOLLARD
EM	ELECTRIC METER
PP	POWER POLE
LS	LIGHT STANDARD
WM	WATER METER
WV	WATER VALVE
ICV	IRRIGATION CONTROL VALVE
FH	FIRE HYDRANT
CO	CLEANOUT
MH	MANHOLE
TSC	TRAFFIC SIGNAL CONTROL
TSP	TRAFFIC SIGNAL POLE
TELE	TELEPHONE BOX
FL	FLOOD LIGHT
FP	FLAG POLE
TR	TRAFFIC SIGN
IRS	1/2" IRON ROD
(C.M.)	W/2" PACHECO KOCH" CAP SET
---	CONTROLLING MONUMENT
---	PROPERTY LINE
-X-	FENCE
OH	OVERHEAD UTILITY LINE
E	UNDERGROUND ELECTRIC LINE
T	UNDERGROUND TELEPHONE LINE
C	UNDERGROUND CABLE LINE
6"W	UNDERGROUND WATER LINE
6"SS	UNDERGROUND SANITARY SEWER LINE



1 STORM DETAIL
SCALE: 1"=20'



2 RACEWAY DRAINAGE
SCALE: 1"=10'

REF: SHEET C4.1 FOR GRADING & DRAINAGE GENERAL NOTES

NOTE: ALL RESPONSIBILITY FOR ADEQUACY OF DESIGN REMAINS WITH THE DESIGN ENGINEER. THE CITY OF ROCKWALL, IN REVIEWING AND RELEASING PLANS FOR CONSTRUCTION, ASSUMES NO RESPONSIBILITY FOR ADEQUACY OR ACCURACY OF DESIGN.

BENCH MARK LIST

BM A "X" CUT ON THE CENTER OF CURB INLET AT THE EDGE OF SIDEWALK ±25' FROM CURB RETURN AT NORTHWEST INTERSECTION OF JUSTIN ROAD AND INDUSTRIAL PARKWAY	ELEV=561.99 FT
BM B "X" CUT ON SOUTHEAST CORNER OF SIDEWALK NEXT TO HEADWALL ON WEST SIDE OF JOHN KING BOULEVARD ±1,700' NORTH OF INTERSTATE-30	ELEV=563.49 FT
BM 3 "X" CUT SET AT CENTER OF CONCRETE CURB INLET IN THE EAST SIDE OF JOHN KING BOULEVARD ±450' SOUTH OF A RAILROAD	ELEV=564.76 FT
BM 50 "X" CUT IN CONCRETE FOUND, ±41' SOUTH OF THE NORTHERNMOST NORTHWEST CORNER OF THE SUBJECT PROPERTY AND ±3' WEST OF THE EDGE OF CONCRETE.	ELEV=565.60 FT
BM 51 "X" CUT IN CONCRETE SET, ±879' EAST OF THE CENTERLINE OF INDUSTRIAL BOULEVARD, ±526' SOUTH OF THE RAILROAD RIGHT-OF-WAY LINE; ±4' WEST OF THE CONCRETE RETAINING WALL AND ±18' NORTH OF A FIRE HYDRANT.	ELEV=561.88 FT

NO.	DATE	REVISION
△	09/29/2016	RECORD DRAWINGS
△	10/20/2015	RACEWAY
△	09/24/2015	ASI 26

Pacheco Koch
7557 RAMBLER ROAD, SUITE 1400
DALLAS, TX 75231 972.235.3031
TX REG. ENGINEERING FIRM F-14439
TX REG. SURVEYING FIRM LS-101938-05

DESIGN	DRAWN	DATE	SCALE	NOTES	FILE	NO.
SMH/MG	MG	NOV 2014	1"=20'			C4.2

RECORD DRAWING

THE SIGNED AND SEALED CONSTRUCTION DOCUMENT HAS BEEN REVISED TO REFLECT CONSTRUCTION RECORDS MAINTAINED AND PROVIDED BY THE CONTRACTOR FOR THIS PROJECT. THE INFORMATION SHOWN ON THIS RECORD DRAWING, WHICH WAS PROVIDED BY THE CONTRACTOR, OR OTHERS NOT ASSOCIATED WITH THE DESIGN ENGINEER, CANNOT BE VERIFIED FOR ACCURACY OR COMPLETENESS. PACHECO KOCH SHALL ASSUME NO LIABILITY FOR ANY CHANGES MADE DURING CONSTRUCTION THAT WERE NOT SPECIFICALLY APPROVED BY THE ENGINEER PRIOR TO CONSTRUCTION. THE SEALED CONSTRUCTION DRAWINGS ARE ON FILE AT THE OFFICES OF PACHECO KOCH.

ATTESTED BY: *Steven Heilbrun*
SIGNATURE: _____
ENGINEER OF RECORD: STEVEN HEILBRUN, P.E.

CONTRACTOR: BOB MOORE CONSTRUCTION, INC.
DATE REVISED: 09/29/2016

09/29/2016 4:06PM
 M:\DWG-32\3273-14\1925.DWG
 C:\DWG-32\3273-14\1925.DWG

CHANNEL BTS-LOT 2 BLOCK A CHANNEL SUBDIVISION