

GRAPHIC SCALE IN FEET

LEGEND table listing symbols for BOLLARD, ELECTRIC METER, POWER POLE, LIGHT STANDARD, WATER METER, WATER VALVE, IRRIGATION CONTROL VALVE, FIRE HYDRANT, CLEANOUT, MANHOLE, TRAFFIC SIGNAL CONTROL, TRAFFIC SIGNAL POLE, TELEPHONE BOX, FLOOD LIGHT, FLAG POLE, TRAFFIC SIGN, 1/2" INCH IRON ROD W/ "PACHECO KOCH" CAP SET, CONTROLLING MONUMENT, PROPERTY LINE, FENCE, OVERHEAD UTILITY LINE, UNDERGROUND ELECTRIC LINE, UNDERGROUND TELEPHONE LINE, UNDERGROUND CABLE LINE, UNDERGROUND WATER LINE, UNDERGROUND SANITARY SEWER LINE, PROPOSED 100-YR FLOODPLAIN LIMITS, PRIVATE STORM DRAIN (REF: LANDSCAPE PLANS, TYP.)

PRIVATE FRENCH DRAIN DETAIL NOT TO SCALE

GRADING & DRAINAGE GENERAL NOTES

- 1. REFER TO GEOTECHNICAL REPORT FOR REQUIREMENTS REGARDING FILL COMPACTION AND MOISTURE CONTENT.
2. UNLESS NOTED, ALL FILL IS TO BE COMPACTED TO A MINIMUM OF 95% STANDARD PROCTOR DENSITY WITHIN 3% OF OPTIMUM MOISTURE CONTENT. FILL TO BE PLACED IN MAXIMUM LIFTS OF 6 INCHES.
3. SIDEWALKS AND ACCESSIBLE ROUTES SHALL HAVE A RUNNING SLOPE NO GREATER THAN 5% (UNLESS OTHERWISE NOTED) AND A CROSS SLOPE NO GREATER THAN 2%
4. GRADING OF ALL HANDICAPPED SPACES AND ROUTES TO CONFORM TO FEDERAL, STATE, AND LOCAL GUIDELINES.
5. ALL PROPOSED AND EXISTING GRADES IN NON-PAVED AREAS ARE "FINISHED GRADE" (I.E. IN LANDSCAPE BEDS, TOP OF MULCH/BEDDING MATERIAL).
6. UNLESS NOTED, STORM DRAIN LINES SHALL BE OF THE FOLLOWING MATERIALS AND INSTALLED IN ACCORDANCE WITH MANUFACTURER'S SPECIFICATIONS:
6.A. RCP C-76, CLASS III
6.B. ADS N-12
6.C. HANCOR HI-Q
7. UNLESS NOTED, GRATE INLETS TO BE "HANSON PIPE AND PRECAST" CATCH BASIN SIZED AS SHOWN, OR APPROVED EQUAL.
8. FINAL PAVING, CURB, AND SIDEWALK ELEVATIONS WILL BE PLACED AT PLUS OR MINUS 0.03 FOOT.
9. REFER TO LANDSCAPE SPECIFICATIONS FOR SEEDING AND SODDING REQUIREMENTS.
10. ANY CONCRETE, ROCK, OR MATERIAL DEEMED BY THE ENGINEER TO BE UNSUITABLE FOR SUBGRADE SHALL BE DISPOSED OFFSITE AT CONTRACTOR'S EXPENSE.
11. TRENCH BACKFILL MATERIAL SHALL CONFORM TO THE REQUIREMENTS OF NCTCOG ITEM 504.2 AND SHALL BE MECHANICALLY COMPACTED IN 6-INCH LIFTS TO THE TOP OF SUBGRADE TO A MINIMUM OF 95% STANDARD PROCTOR DENSITY IN ACCORDANCE WITH NCTCOG 3RD EDITION ITEM 504.5 UNLESS OTHERWISE SHOWN ON THESE PLANS OR STATED IN THE STANDARD CITY SPECIFICATIONS.
12. EMBEDMENT SHALL CONFORM TO THE REQUIREMENTS OF NCTCOG 3RD EDITION ITEM 504.5 UNLESS OTHERWISE SHOWN ON THESE PLANS OR STATED IN THE STANDARD CITY SPECIFICATIONS.
13. A ROUND MANHOLE COVER MEETING CITY SPECIFICATIONS SHALL BE PLACED IN ALL INLET TOPS NEAR THE OUTLET PIPE.
14. ALL CONCRETE FOR INLETS AND DRAINAGE STRUCTURES SHALL CONFORM TO NCTCOG 3RD EDITION ITEM 702.2.4, 4200 PSI (MIN. 7.0 SACK MIX) UNLESS OTHERWISE SHOWN ON THESE PLANS OR STATED IN STANDARD CITY SPECIFICATIONS.
15. CRUSHED STONE BEDDING OR APPROVED EQUAL SHALL BE PROVIDED BY THE CONTRACTOR WHEN ROCK IS ENCOUNTERED IN TRENCHES. THERE SHALL BE NO ADDITIONAL PAY ITEM FOR CRUSHED STONE BEDDING.
16. IF REQUIRED DUE TO CONSTRUCTION, POWER POLES TO BE BRACED OR RELOCATED AT CONTRACTOR'S EXPENSE.

NOTE: ALL RESPONSIBILITY FOR ADEQUACY OF DESIGN REMAINS WITH THE DESIGN ENGINEER. THE CITY OF ROCKWALL, IN REVIEWING AND RELEASING PLANS FOR CONSTRUCTION, ASSUMES NO RESPONSIBILITY FOR ADEQUACY OR ACCURACY OF DESIGN.

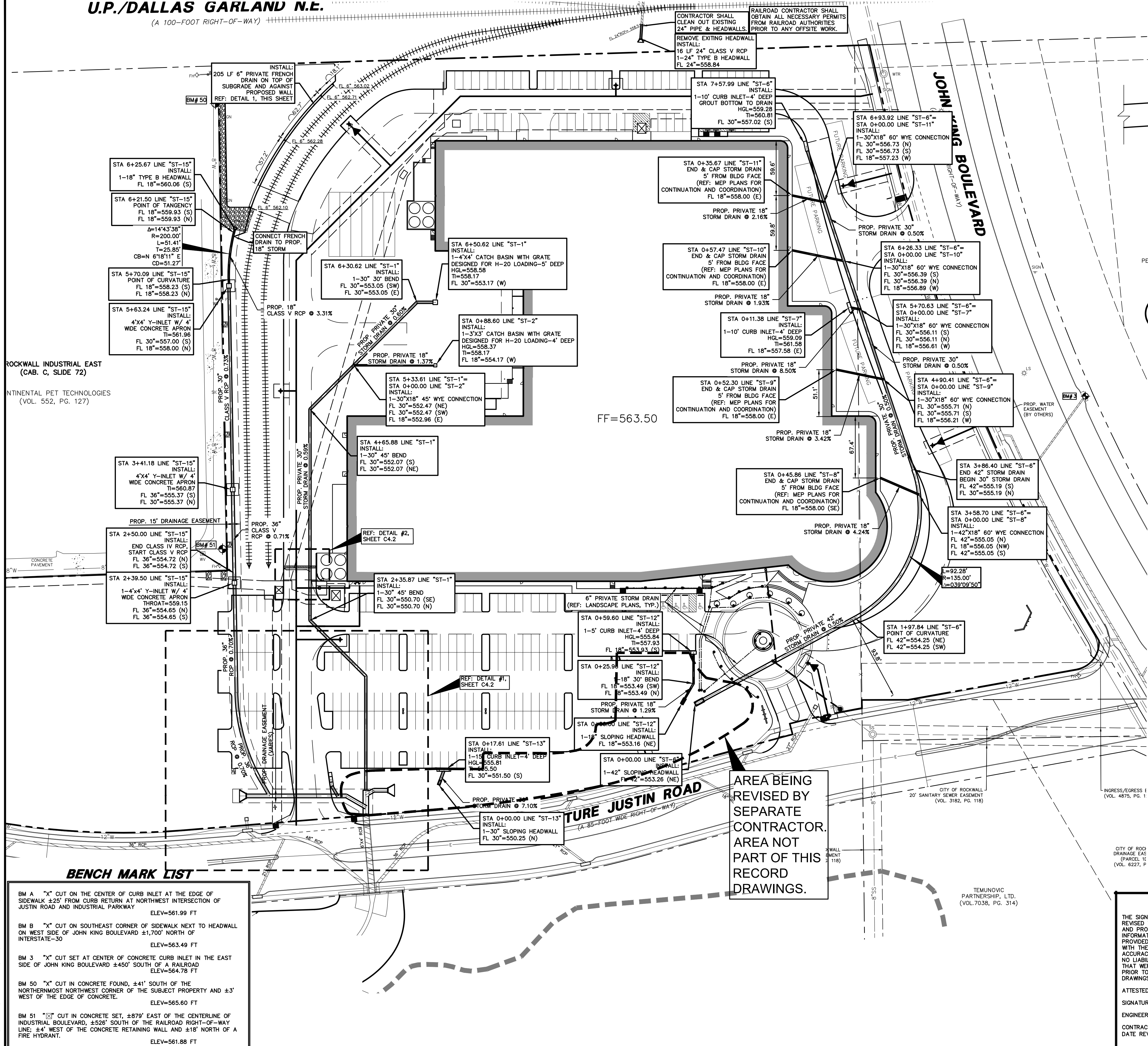
ALL STORM LINES ARE PRIVATE EXCEPT ST-1 FROM STA. 0+00.00 TO 0+25.40, ST-5 AND ST-15.

REVISION table with columns: NO., DATE, REVISION. Entries include 09/29/2016 RECORD DRAWINGS, 04/08/2016 ENTRY DRIVE REVISIONS, 10/20/2015 RACEWAY, 09/24/2015 ASI 26.

Pacheco Koch logo and contact information: 7557 RAMBLER ROAD, SUITE 1400 DALLAS, TX 75231 972.235.3031 TX REG. ENGINEERING FIRM F-14439 TX REG. SURVEYING FIRM LS-101938-05. STORM SEWER PLAN CHANNELL BTS NWC JUSTIN RD. & JOHN KING BLVD. CHANNELL SUBDIVISION LOT 2, BLOCK A CITY OF ROCKWALL, ROCKWALL COUNTY, TEXAS. DESIGN: SMH/MG, DRAWN: MG, DATE: NOV 2014, SCALE: 1"=50', FILE: C4.1

RECORD DRAWING THE SIGNED AND SEALED CONSTRUCTION DOCUMENT HAS BEEN REVISED TO REFLECT CONSTRUCTION RECORDS MAINTAINED AND PROVIDED BY THE CONTRACTOR FOR THIS PROJECT. THE INFORMATION SHOWN ON THIS RECORD DRAWING, WHICH WAS PROVIDED BY THE CONTRACTOR, OR OTHERS NOT ASSOCIATED WITH THE DESIGN ENGINEER, CANNOT BE VERIFIED FOR ACCURACY OR COMPLETENESS. PACHECO KOCH SHALL ASSUME NO LIABILITY FOR ANY CHANGES MADE DURING CONSTRUCTION THAT WERE NOT SPECIFICALLY APPROVED BY THE ENGINEER PRIOR TO CONSTRUCTION. THE SEALED CONSTRUCTION DRAWINGS ARE ON FILE AT THE OFFICES OF PACHECO KOCH. ATTESTED BY: [Signature] ENGINEER OF RECORD: STEVEN HELBRUN, P.E. CONTRACTOR: BOB MOORE CONSTRUCTION, INC. DATE REVISED: 09/29/2016

AREA BEING REVISED BY SEPARATE CONTRACTOR. AREA NOT PART OF THIS RECORD DRAWINGS.



ROCKWALL INDUSTRIAL EAST (CAB. C, SLIDE 72) CONTINENTAL PET TECHNOLOGIES (VOL. 552, PG. 127)

BENCH MARK LIST table with columns: BM #, Description, ELEVATION. Includes BM A (ELEV=561.99 FT), BM B (ELEV=563.49 FT), BM 3 (ELEV=564.78 FT), BM 50 (ELEV=565.60 FT), BM 51 (ELEV=561.88 FT).

09/20/2016 8:01 AM M:\DWG-32\3273-14\19251.DWG (CIVIL) C:\3D 2012\3273-14\19251.DWG

CHANNELL BTS-LOT 2 BLOCK A CHANNELL SUBDIVISION