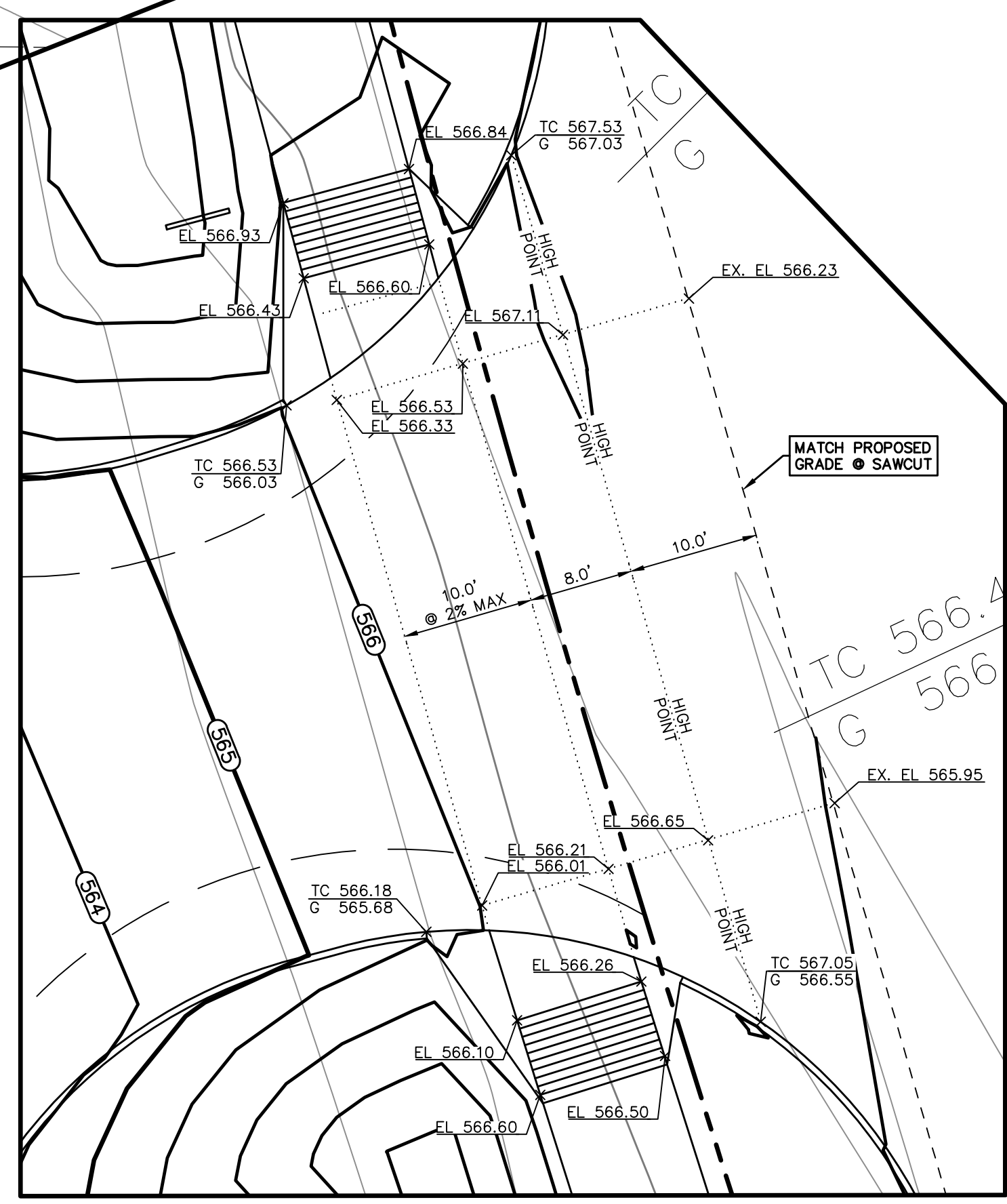
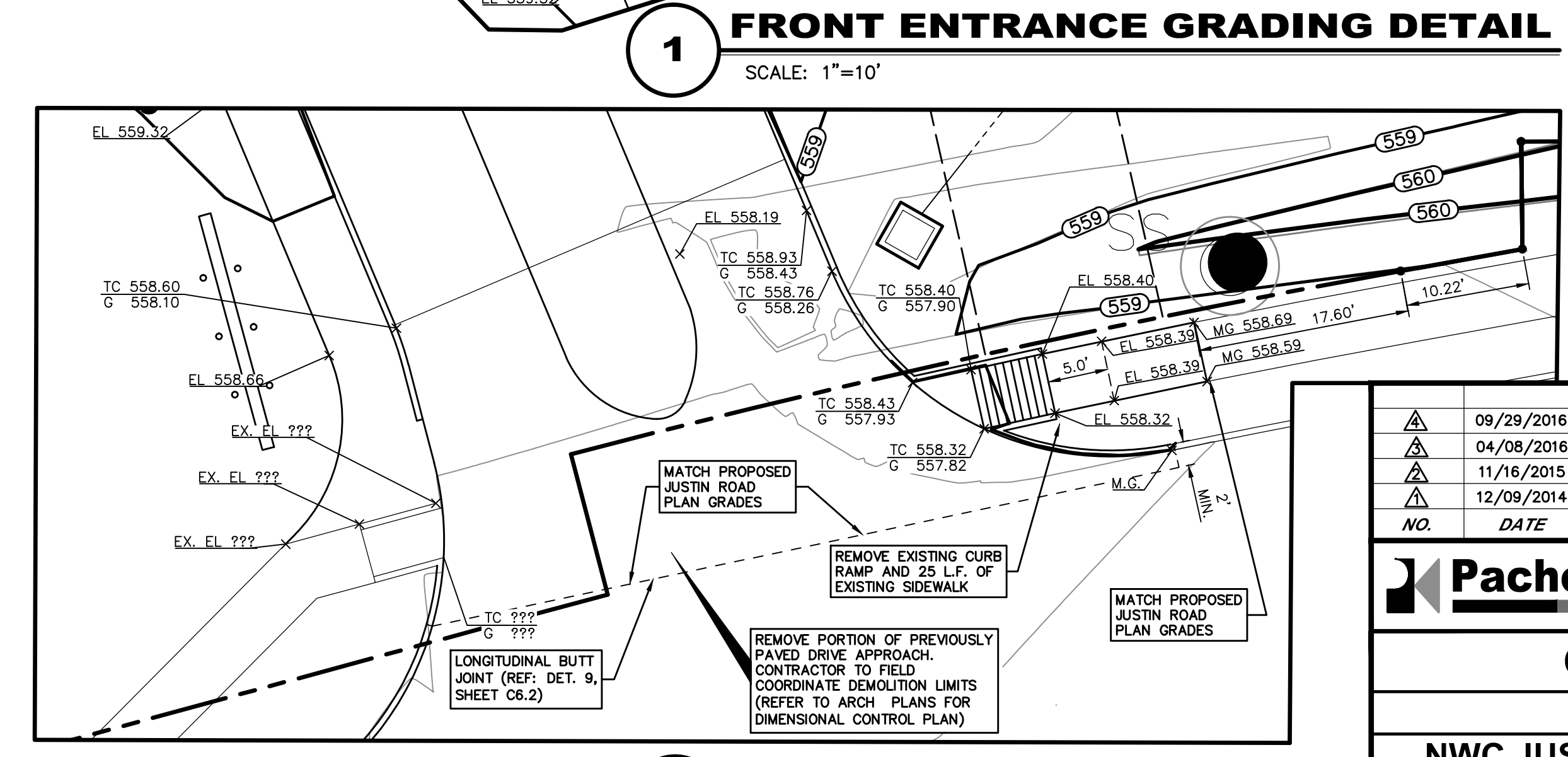


**SECTION A-A
TYPICAL BERM**
NOT TO SCALE



2 EAST DRIVE APPROACH DETAIL
SCALE: 1"=10'



3 SOUTH CURB RAMPS
SCALE: 1"=10'

BENCH MARK LIST

BM A "X" CUT ON THE CENTER OF CURB INLET AT THE EDGE OF SIDEWALK ±2' FROM CURB RETURN AT NORTHWEST INTERSECTION OF JUSTIN ROAD AND INDUSTRIAL PARKWAY
ELEV=561.99 FT

BM B "X" CUT ON SOUTHEAST CORNER OF SIDEWALK NEXT TO HEADWALL ON WEST SIDE OF JOHN KING BOULEVARD ±1,700' NORTH OF INTERSTATE-30
ELEV=563.49 FT

BM 3 "X" CUT SET AT CENTER OF CONCRETE CURB INLET IN THE EAST SIDE OF JOHN KING BOULEVARD ±450' SOUTH OF A RAILROAD
ELEV=564.78 FT

BM 50 "X" CUT IN CONCRETE FOUND, ±41' SOUTH OF THE NORTHERN MOST NORTHWEST CORNER OF THE SUBJECT PROPERTY AND ±3' WEST OF THE EDGE OF CONCRETE.
ELEV=565.60 FT

BM 51 "X" CUT IN CONCRETE SET, ±879' EAST OF THE CENTERLINE OF INDUSTRIAL BOULEVARD, ±526' SOUTH OF THE RAILROAD RIGHT-OF-WAY LINE; ±4' WEST OF THE CONCRETE RETAINING WALL AND ±18' NORTH OF A FIRE HYDRANT.
ELEV=561.88 FT

RECORD DRAWING

THE SIGNED AND SEALED CONSTRUCTION DOCUMENT HAS BEEN REVISED TO REFLECT CONSTRUCTION RECORDS MAINTAINED AND PROVIDED BY THE CONTRACTOR FOR THIS PROJECT. THE INFORMATION SHOWN ON THIS RECORD DRAWING, WHICH WAS PROVIDED BY THE CONTRACTOR, OR OTHERS NOT ASSOCIATED WITH THE DESIGN ENGINEER, CANNOT BE VERIFIED FOR ACCURACY OR COMPLETENESS. PACHECO KOCH SHALL ASSUME NO LIABILITY FOR ANY CHANGES MADE DURING CONSTRUCTION THAT WERE NOT SPECIFICALLY APPROVED BY THE ENGINEER PRIOR TO CONSTRUCTION. THE SEALED CONSTRUCTION DRAWINGS ARE ON FILE AT THE OFFICES OF PACHECO KOCH.

ATTESTED BY: *Steven Helbrun*
SIGNATURE: STEVEN HELBRUN, P.E.
ENGINEER OF RECORD: STEVEN HELBRUN, P.E.
CONTRACTOR: BOB MOORE CONSTRUCTION, INC.
DATE REVISED: 09/29/2016

NO.	DATE	REVISION
1	09/29/2016	RECORD DRAWINGS
2	04/08/2016	ENTRY DRIVE REVISIONS
3	11/16/2015	CIRCULAR DRIVE REVISIONS
4	12/09/2014	TAS REVISIONS

Pacheco Koch
7557 RAMBLER ROAD, SUITE 1400
DALLAS, TX 75231 972.235.3031
TX REG. ENGINEERING FIRM F-14439
TX REG. SURVEYING FIRM LS-101938-05

GRADING PLAN
CHANNELL BTS
NWC JUSTIN RD. & JOHN KING BLVD.
CHANNELL SUBDIVISION LOT 2, BLOCK A
CITY OF ROCKWALL, ROCKWALL COUNTY, TEXAS

DESIGN	DRAWN	DATE	SCALE	NOTES	FILE	NO.
SMH/MG	MG	NOV 2014	1"=30'			C2.3

09/20/2016 7:03AM
 M: DWG-32-3273-14-192GR.DWG