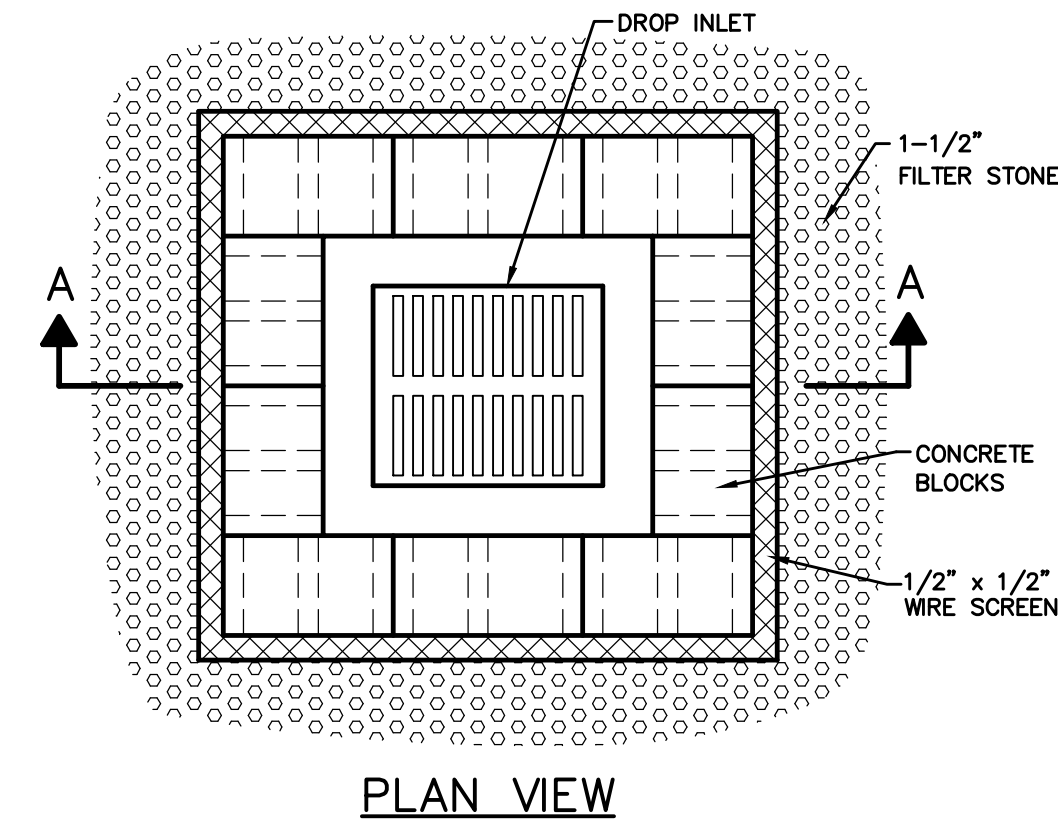
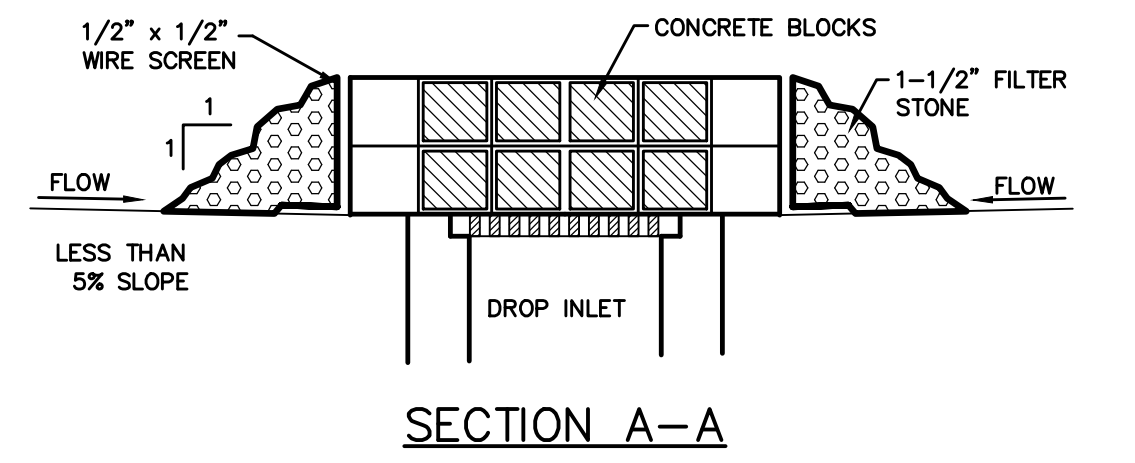
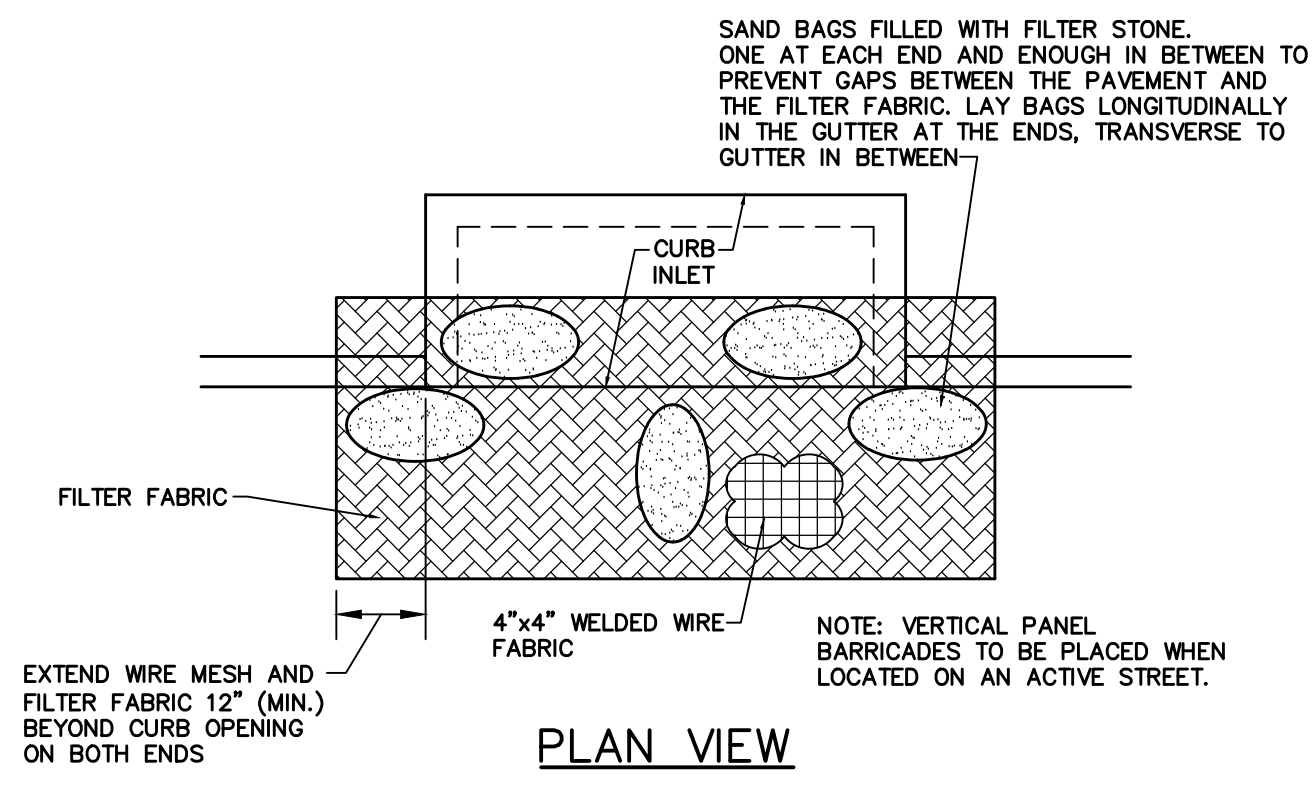
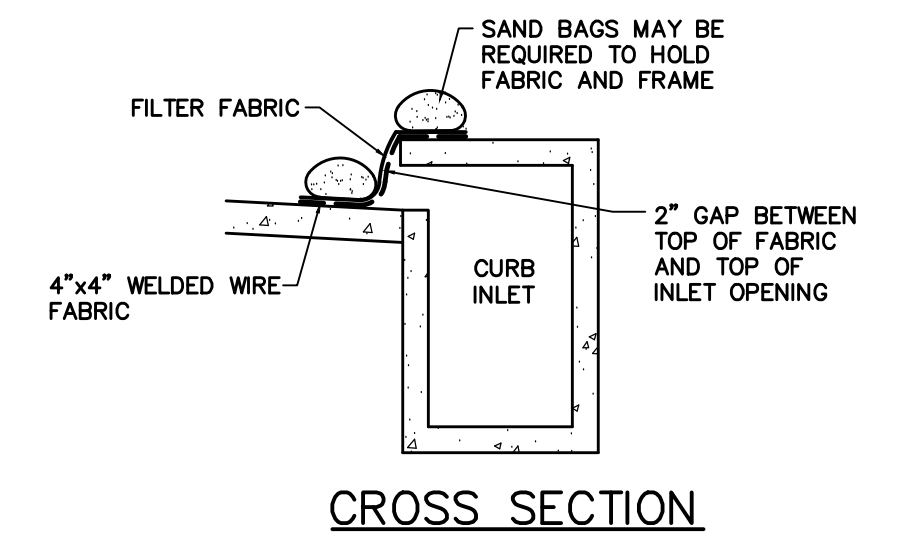


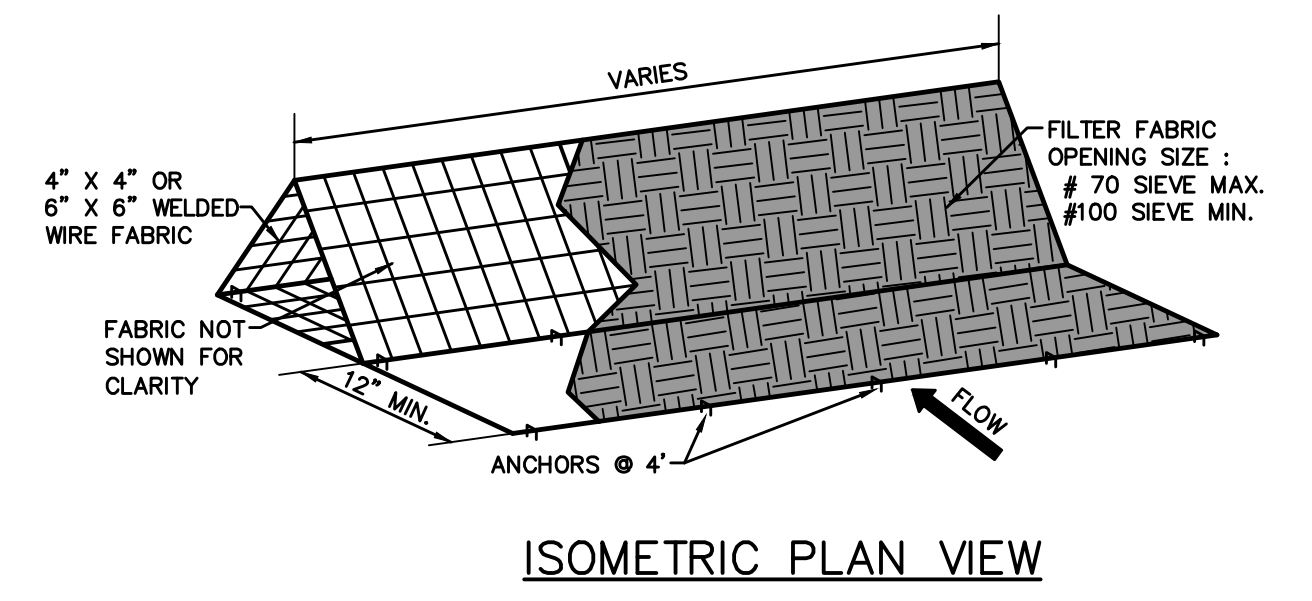
**1 SILT FENCE**  
NOT TO SCALE



**2 DROP INLET PROTECTION**  
NOT TO SCALE

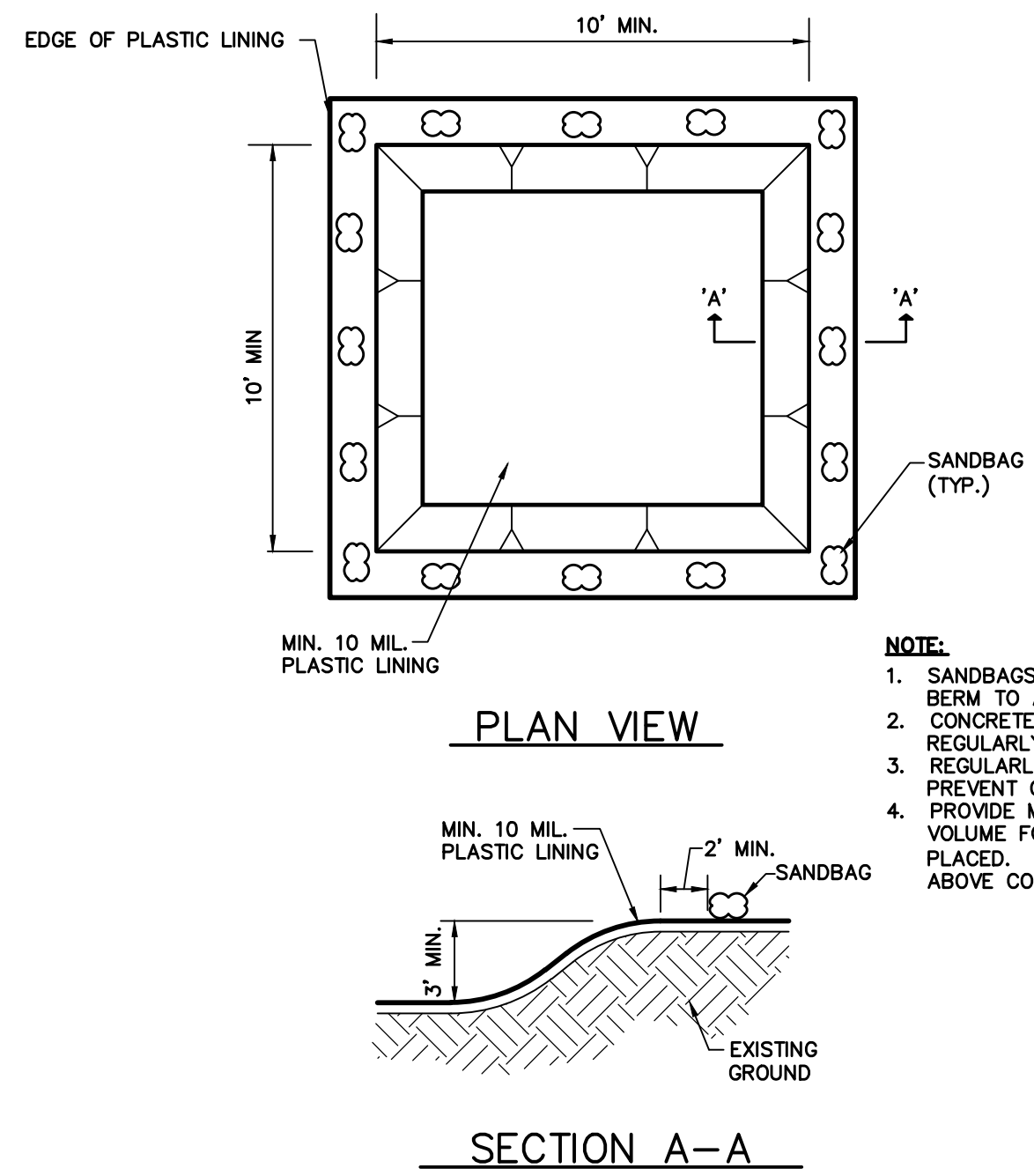


**3 CURB INLET PROTECTION**  
NOT TO SCALE

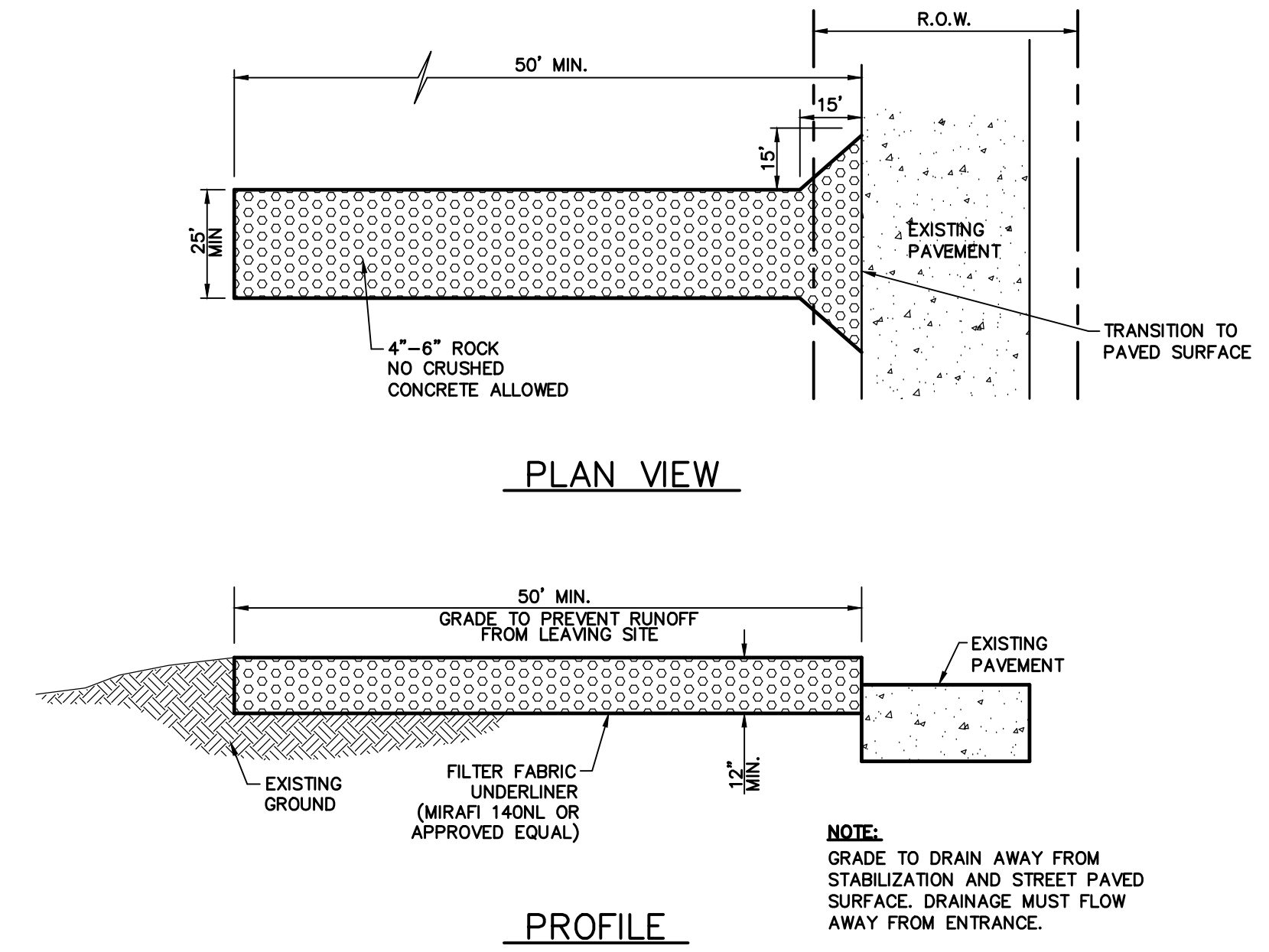


- NOTES:**
1. DIKES ARE TO BE INSTALLED ALONG A LINE OF CONSTANT ELEVATION (ALONG A CONTOUR LINE).
  2. MAXIMUM SLOPE PERPENDICULAR TO THE DIKE IS 1:1.
  3. MAXIMUM DRAINAGE FLOW TO THE DIKE SHALL BE 11 CFS PER 100 LINEAR FEET OF DIKE.
  4. MAXIMUM DISTANCE OF FLOW TO DIKE SHOULD BE 200 FEET OR LESS.
  5. MAXIMUM CONCENTRATED FLOW TO DIKE SHALL BE 1 CFS.
  6. IF 50% OR LESS OF SOIL, BY WEIGHT, PASSES THE U.S. STANDARD SIEVE No. 200, SELECT THE EQUIVALENT OPENING SIZE (E.O.S.) TO RETAIN 85% OF THE SOIL.

**4 TRIANGULAR SEDIMENT FILTER DIKE**  
NOT TO SCALE



**5 CONCRETE WASHOUT AREA**  
NOT TO SCALE



**6 STABILIZED CONSTRUCTION ENTRANCE**  
NOT TO SCALE

**RECORD DRAWING**

THE SIGNED AND SEALED CONSTRUCTION DOCUMENT HAS BEEN REVISED TO REFLECT CONSTRUCTION RECORDS MAINTAINED AND PROVIDED BY THE CONTRACTOR FOR THIS PROJECT. THE INFORMATION SHOWN ON THIS RECORD DRAWING, WHICH WAS PROVIDED BY THE CONTRACTOR, OR OTHERS NOT ASSOCIATED WITH THE DESIGN ENGINEER, CANNOT BE VERIFIED FOR ACCURACY OR COMPLETENESS. PACHECO KOCH SHALL ASSUME NO LIABILITY FOR ANY CHANGES MADE DURING CONSTRUCTION THAT WERE NOT SPECIFICALLY APPROVED BY THE ENGINEER PRIOR TO CONSTRUCTION. THE SEALED CONSTRUCTION DRAWINGS ARE ON FILE AT THE OFFICES OF PACHECO KOCH.

ATTESTED BY: *Steven Heilbrun*  
SIGNATURE: *Steven Heilbrun*  
ENGINEER OF RECORD: STEVEN HEILBRUN, P.E.  
CONTRACTOR: CALHAR CONSTRUCTION, INC.  
DATE REVISED: 09/30/2016

NO.	DATE	REVISION
1	09/30/2016	RECORD DRAWINGS
2	07/28/2016	CITY COMMENTS

**Pacheco Koch** 7557 RAMBLER ROAD, SUITE 1400  
DALLAS, TX 75231 972.235.3031  
TX REG. ENGINEERING FIRM F-14439  
TX REG. SURVEYING FIRM LS-10193805

**EROSION CONTROL DETAILS**  
**CHANNEL BTS**  
**STORM SEWER EXTENSION**  
**& LANDSCAPE IMPROVEMENTS**  
**CITY OF ROCKWALL, ROCKWALL COUNTY, TEXAS**

DESIGN	DRAWN	DATE	SCALE	NOTES	FILE	NO.
MG	DAR	JULY 2016	AS NOTED			<b>C2.2</b>

09/30/2016 6:50 AM  
 M:\VWC-32\3273-16\303\DWG\CIVIL C:3D 2015\3273-16\_303\FR05.DWG  
 9/30/2016 6:50 AM

CHANNEL BTS