

STA. 40+00 CONST.
 1-8"x45' BEND
 1-8"x22.5' BEND
 1-6"x15' BEND
 1-6"x22.5' BEND

CITY OF ROCKWALL
 SQUABBLE CREEK
 WASTEWATER TREATMENT PLANT

STA. 48+70
 STUB INTO EXIST. SSMH

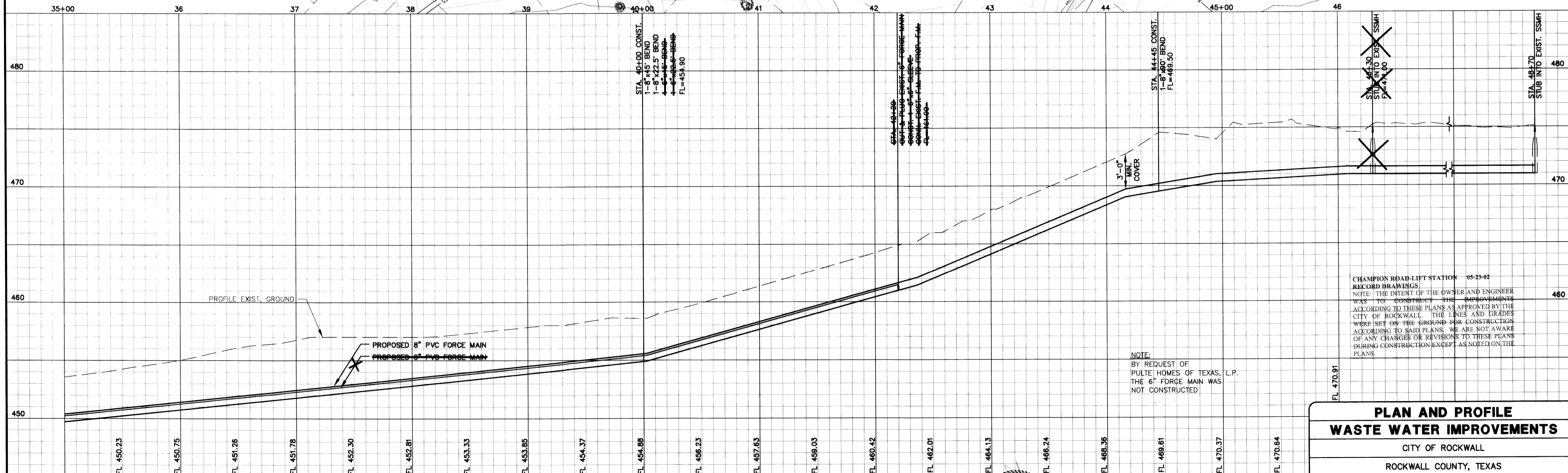
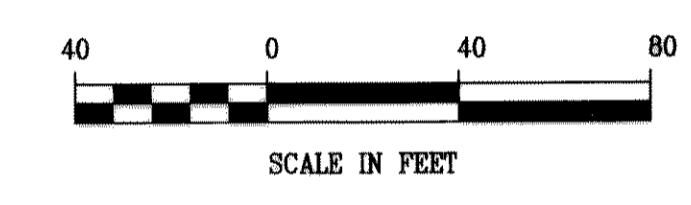
CONTRACTOR SHALL COORDINATE THE IN PLACE WITH NORTH TEXAS MUNICIPAL WATER DISTRICT.

* EXISTING 6" FORCE MAIN TO BE ABANDONED IN PLACE WILL BE REMOVED WHEN FUTURE SUBDIVISION IS CONSTRUCTED.

STA. 42+00
 CUT & PLUG EXIST. 6" FORCE MAIN
 CONST. 1-6"x15' BEND
 6000' EXIST. FORCE MAIN TO PROP. FORCE MAIN

STA. 44+45 CONST.
 1-8"x90' BEND

EXISTING 6" FORCE MAIN
 ABANDON IN PLACE



STA. 40+00 CONST.
 1-8"x45' BEND
 1-8"x22.5' BEND
 1-6"x15' BEND
 1-6"x22.5' BEND
 FL=454.90

STA. 42+00
 CUT & PLUG EXIST. 6" FORCE MAIN
 CONST. 1-6"x15' BEND
 6000' EXIST. F.M. TO PROP. F.M.
 FL=461.00

STA. 44+45 CONST.
 1-8"x90' BEND
 FL=469.50

STA. 48+70
 STUB INTO EXIST. SSMH
 FL=470.91

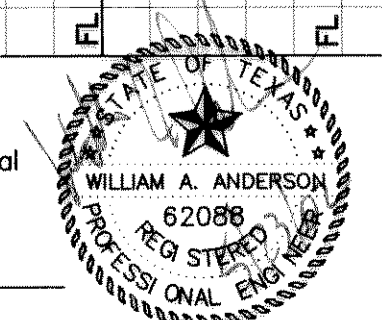
NOTE:
 BY REQUEST OF
 PULTE HOMES OF TEXAS, L.P.
 THE 6" FORCE MAIN WAS
 NOT CONSTRUCTED

CHAMPION ROAD-LIFT STATION 05-23-02
 RECORD DRAWINGS
 NOTE: THE INTENT OF THE OWNER AND ENGINEER WAS TO CONSTRUCT THE IMPROVEMENTS ACCORDING TO THESE PLANS AS APPROVED BY THE CITY OF ROCKWALL. THE LINES AND GRADES WERE SET ON THE GROUND FOR CONSTRUCTION ACCORDING TO SAID PLANS. WE ARE NOT AWARE OF ANY CHANGES OR REVISIONS TO THESE PLANS DURING CONSTRUCTION EXCEPT AS NOTED ON THE PLANS.

PLAN AND PROFILE
WASTE WATER IMPROVEMENTS
 CITY OF ROCKWALL
 ROCKWALL COUNTY, TEXAS

DOWDEY, ANDERSON & ASSOCIATES, INC.
 5225 VILLAGE CREEK DR., STE. 200 (972) 931-0694 PLANO, TEXAS

These construction plans were prepared under the responsible supervision of William A. Anderson, Registered Professional Engineer No. 62088.



NO.	DATE	BY	REVISION
AB	5/23/02	GB	DELETED 6" FORCE MAIN AND REVISED OUTFALL FROM 46+30 TO 48+70

DESIGN	DRAWN	CHECKED	DATE	SCALE	JOB	SHEET
DJR	BB	WAA	MAY 2002	H: 1"=40' V: 1"=4'	99-015	3 / 3