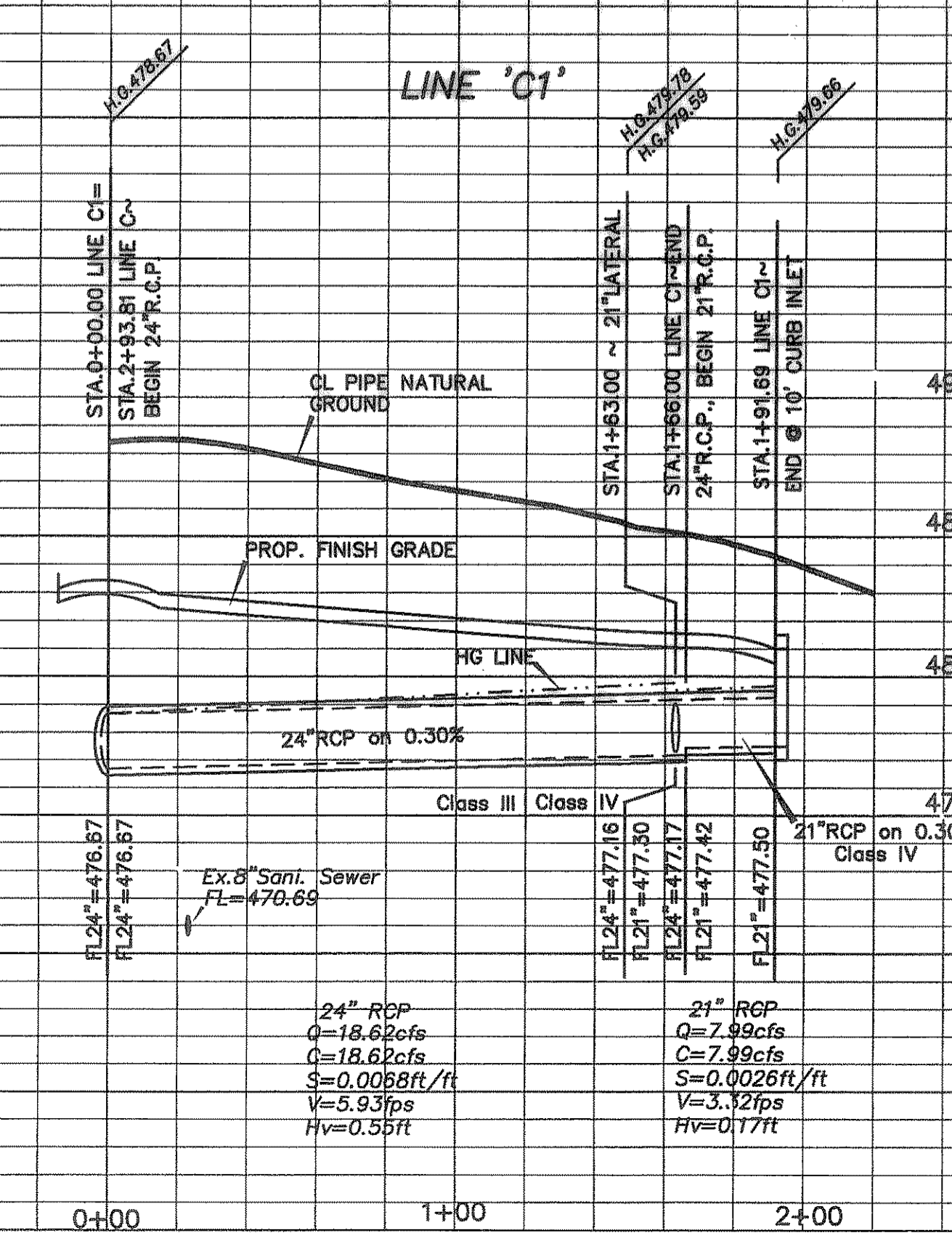
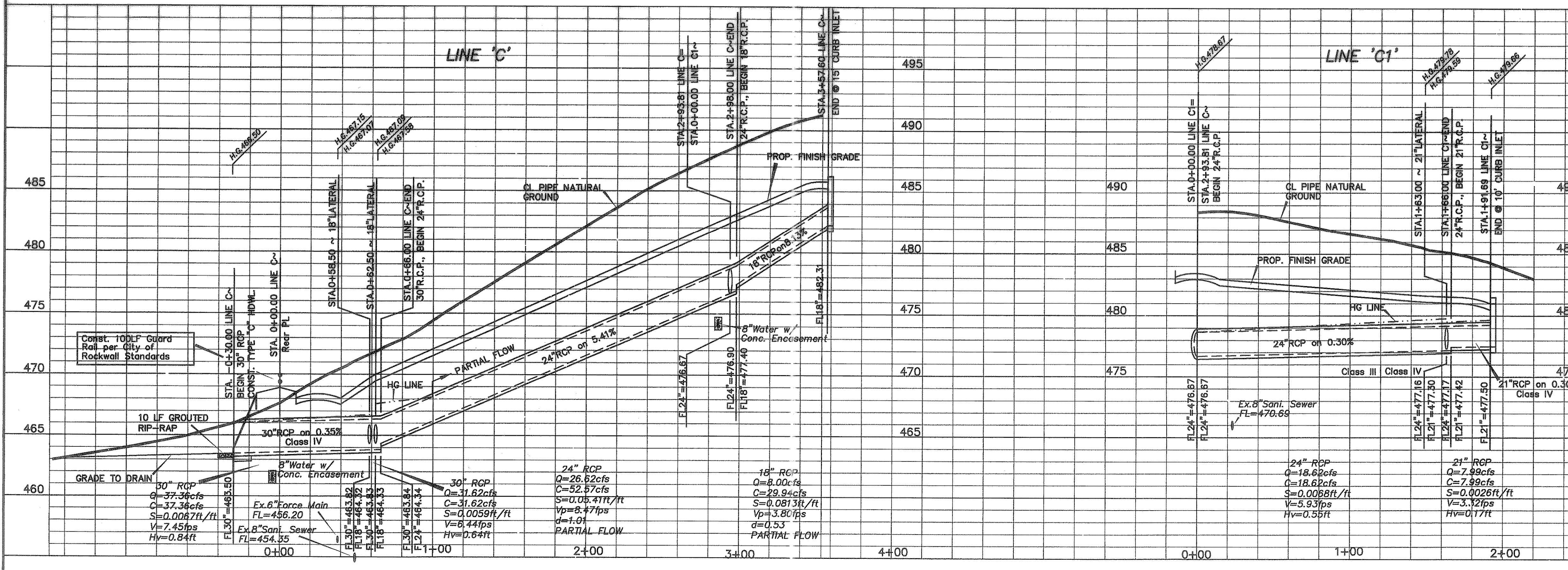
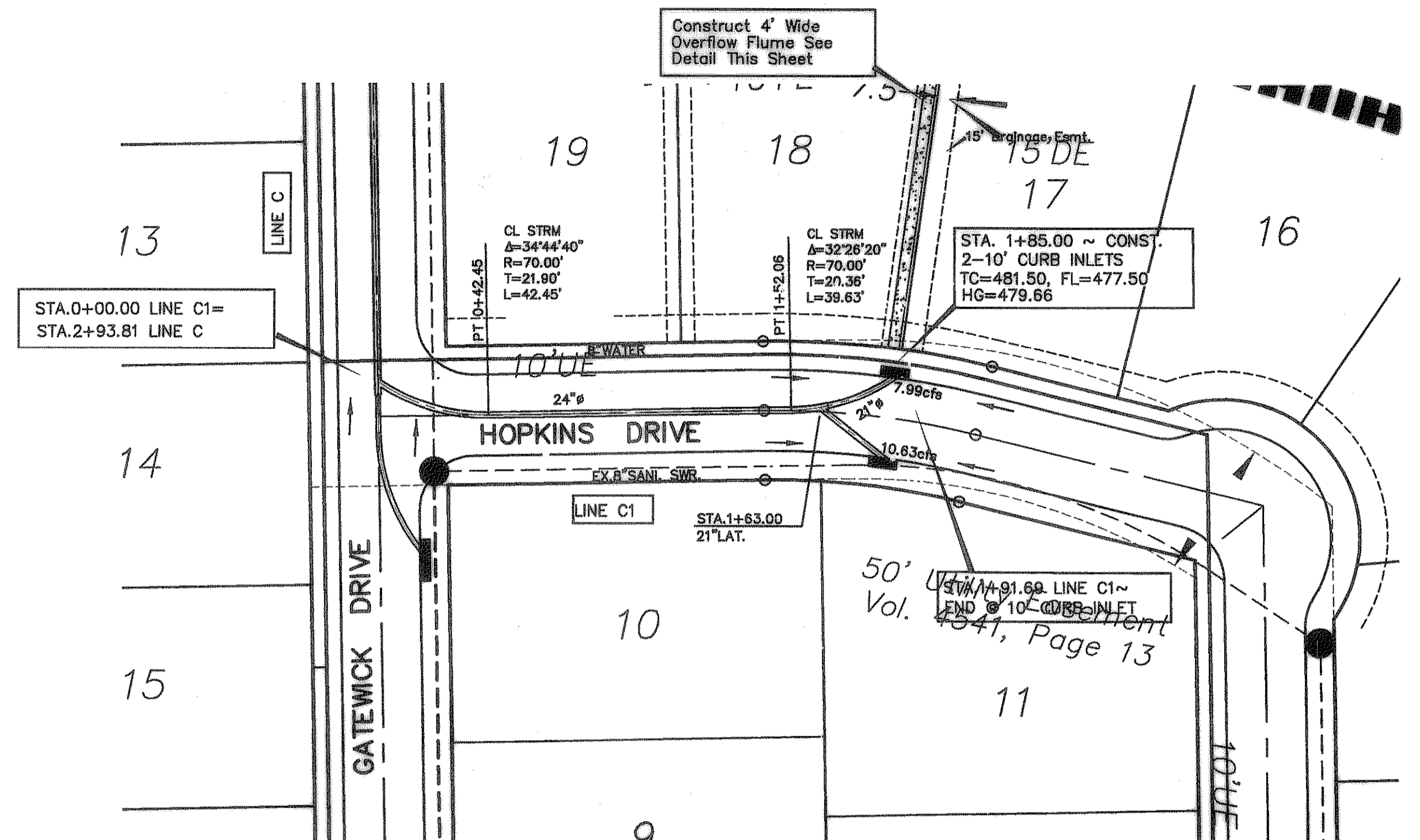
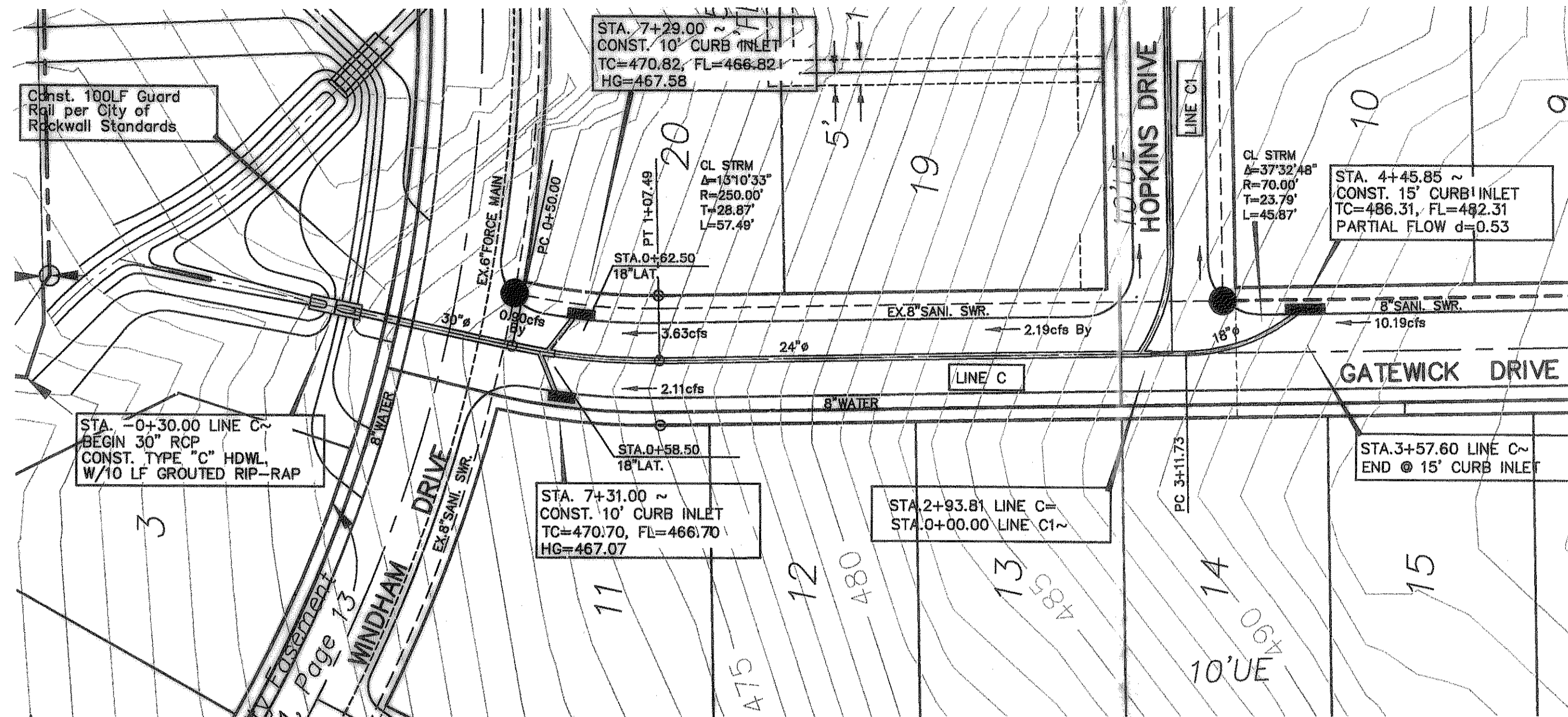
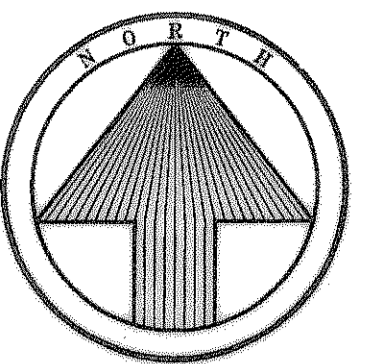


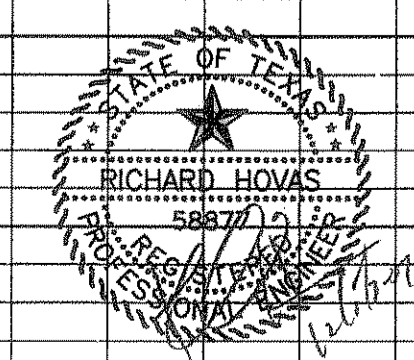
4" 3000 psi Concrete  
W/#3 Bars on 24" Ctrs.

Overflow Flume Detail



**AS BUILT PLANS**  
12/08/2008

The alignment and grade were set on the ground for construction per the plans. The engineer did not verify alignment or grades after construction. We are not aware of any changes or revisions to these plans during construction except as noted.



**STORM SEWER PLAN**  
**CASTLE RIDGE ESTATES PHASE 2**  
**ROCKWALL, ROCKWALL COUNTY, TEXAS**  
**TIPTON ENGINEERING, INC.**  
 ENGINEERING • SURVEYING • PLANNING  
 6330 Broadway Blvd. • Suite C • Garland, Texas 75043 • (972) 226-2967

DESIGN	DRAWN	DATE	SCALE	NOTES	FILE	NO.
TE, Inc.	TE, Inc.	12-06	1"=40' H. 1"=5' V.	TE, Inc.	4803	13