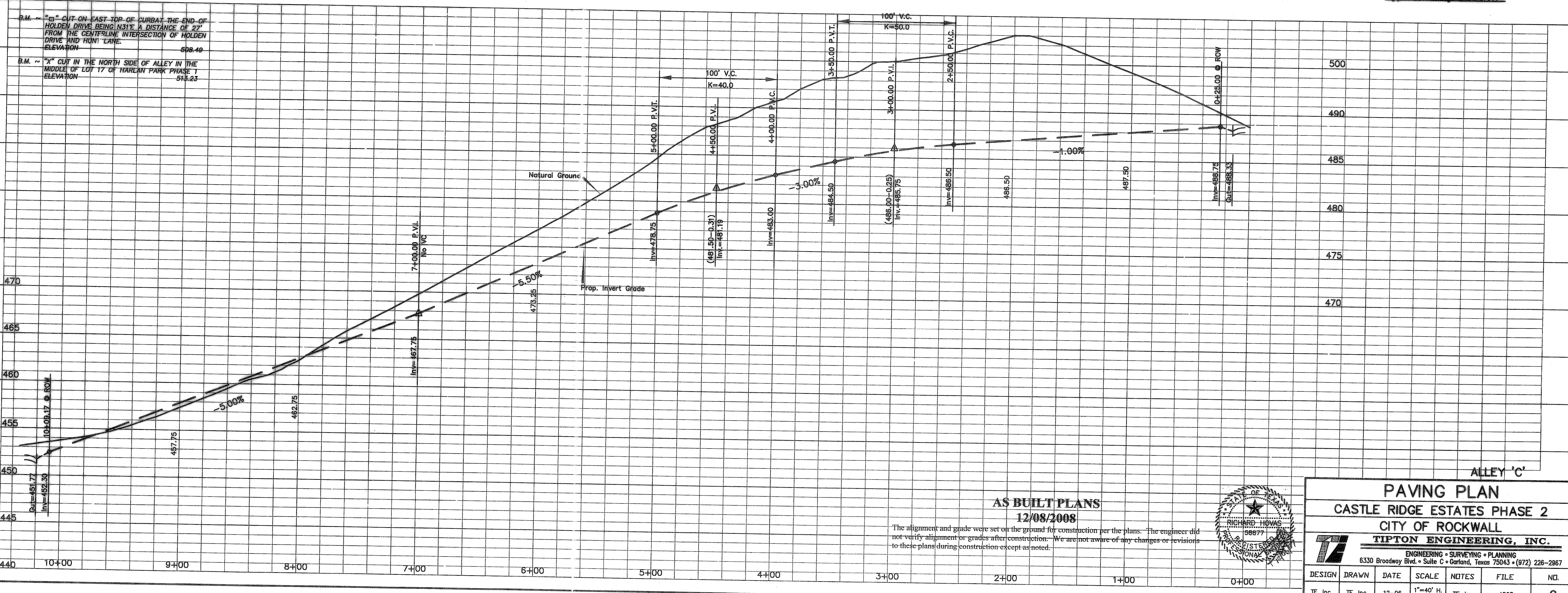


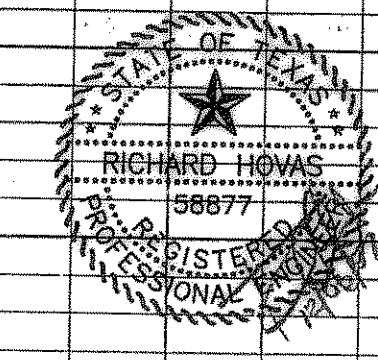
Notes!
 1. 7"-5"-7" Thick, 4000 P.S.I. Reinforced Concrete Pavement,
 No. 3 Bars @ 24" O.C. Edgeway.
 2. 6" Lime Stabilized Subgrade, Compacted To
 A Density Not Less Than 95% Std. Proctor.

Typical Alley Section



AS BUILT PLANS
12/08/2008

The alignment and grade were set on the ground for construction per the plans. The engineer did not verify alignment or grades after construction. We are not aware of any changes or revisions to these plans during construction except as noted.



PAVING PLAN						
CASTLE RIDGE ESTATES PHASE 2						
CITY OF ROCKWALL						
TIPTON ENGINEERING, INC.						
ENGINEERING • SURVEYING • PLANNING						
6330 Broadway Blvd. • Suite C • Garland, Texas 75043 • (972) 226-2967						
DESIGN	DRAWN	DATE	SCALE	NOTES	FILE	NO.
TE, Inc.	TE, Inc.	12-06	1"=40' H. 1"=5' V.	TE, Inc.	4803	9