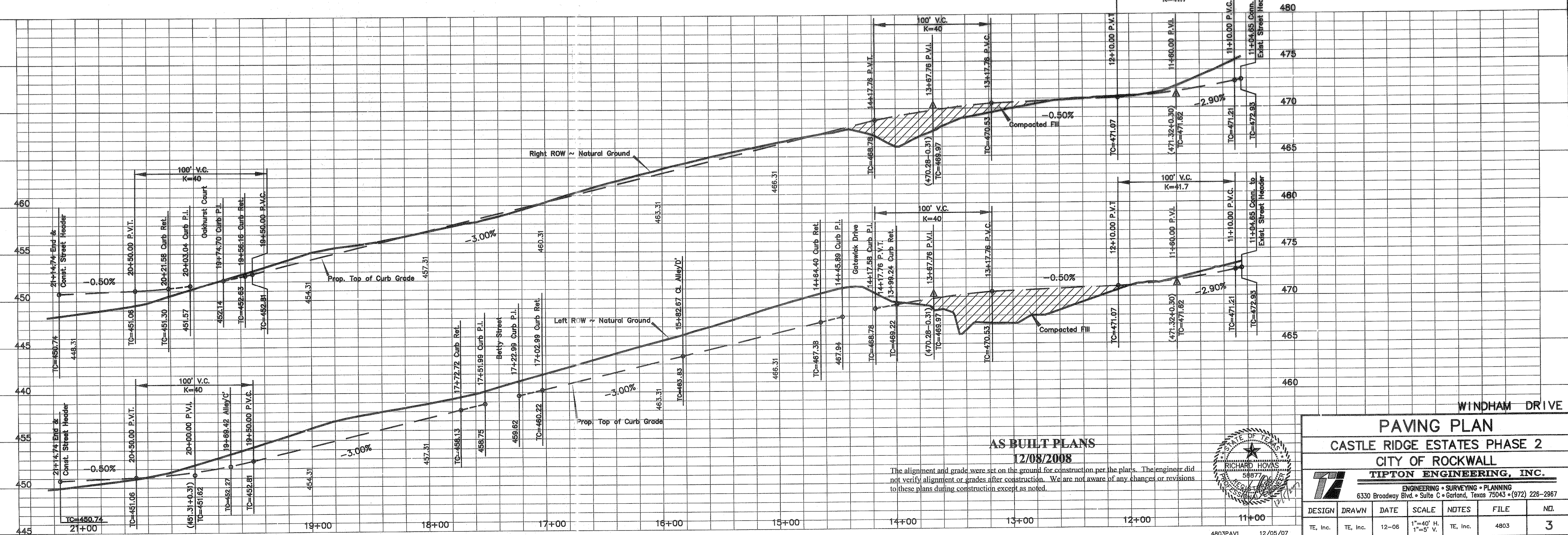
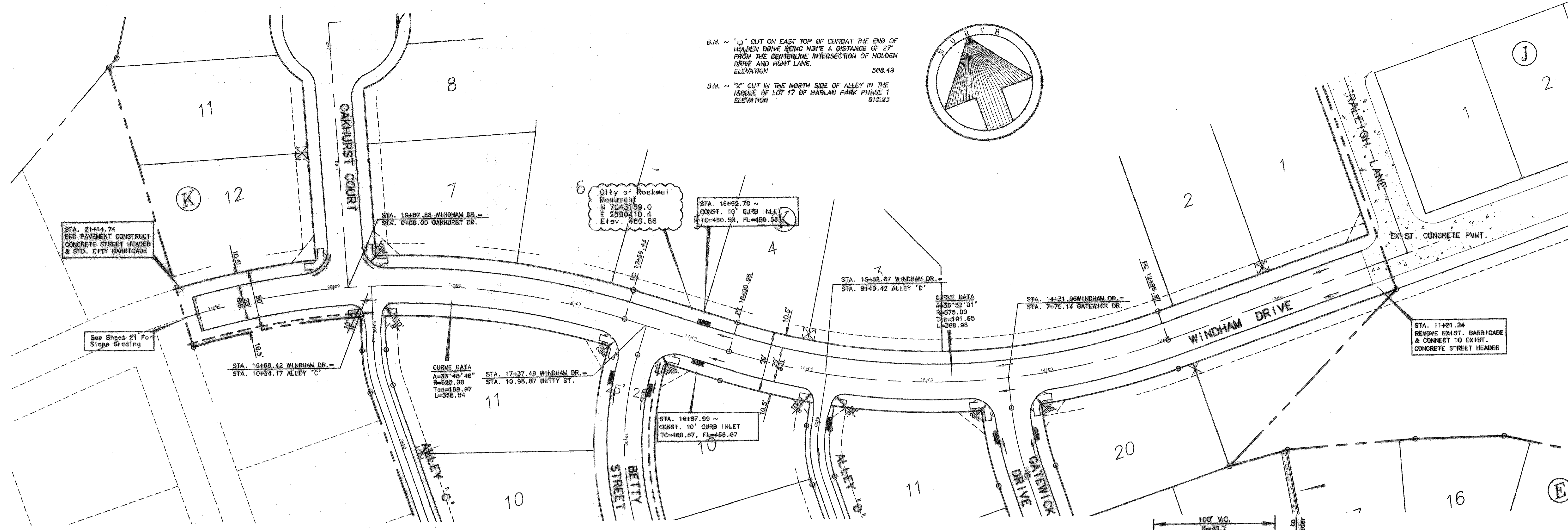


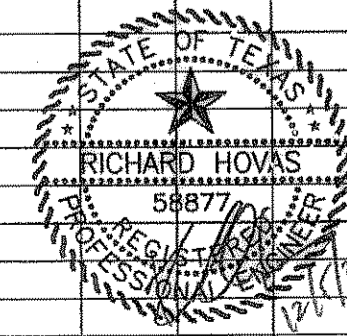
B.M. ~ "E" CUT ON EAST TOP OF CURBAT THE END OF HOLDEN DRIVE BEING N31°E A DISTANCE OF 27' FROM THE CENTERLINE INTERSECTION OF HOLDEN DRIVE AND HUNT LANE. ELEVATION 508.49

B.M. ~ "X" CUT IN THE NORTH SIDE OF ALLEY IN THE MIDDLE OF LOT 17 OF HARLAN PARK PHASE 1 ELEVATION 513.23



AS BUILT PLANS
12/08/2008

The alignment and grade were set on the ground for construction per the plans. The engineer did not verify alignment or grades after construction. We are not aware of any changes or revisions to these plans during construction except as noted.



PAVING PLAN						
CASTLE RIDGE ESTATES PHASE 2						
CITY OF ROCKWALL						
TIPTON ENGINEERING, INC.						
ENGINEERING • SURVEYING • PLANNING						
6330 Broadway Blvd. • Suite C • Garland, Texas 75043 • (972) 226-2967						
DESIGN	DRAWN	DATE	SCALE	NOTES	FILE	NO.
TE, Inc.	TE, Inc.	12-06	1"=40' H. 1"=5' V.	TE, Inc.	4803	3

4803PAV1 12/05/07