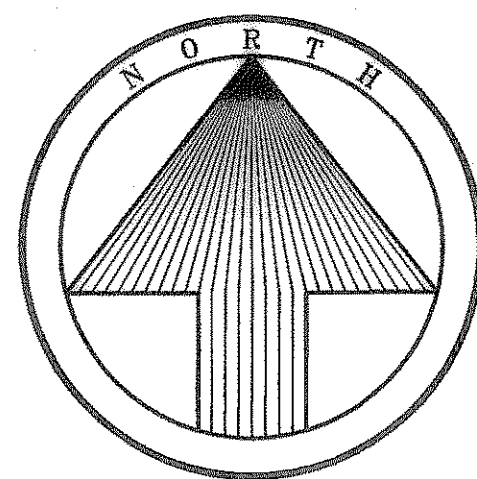
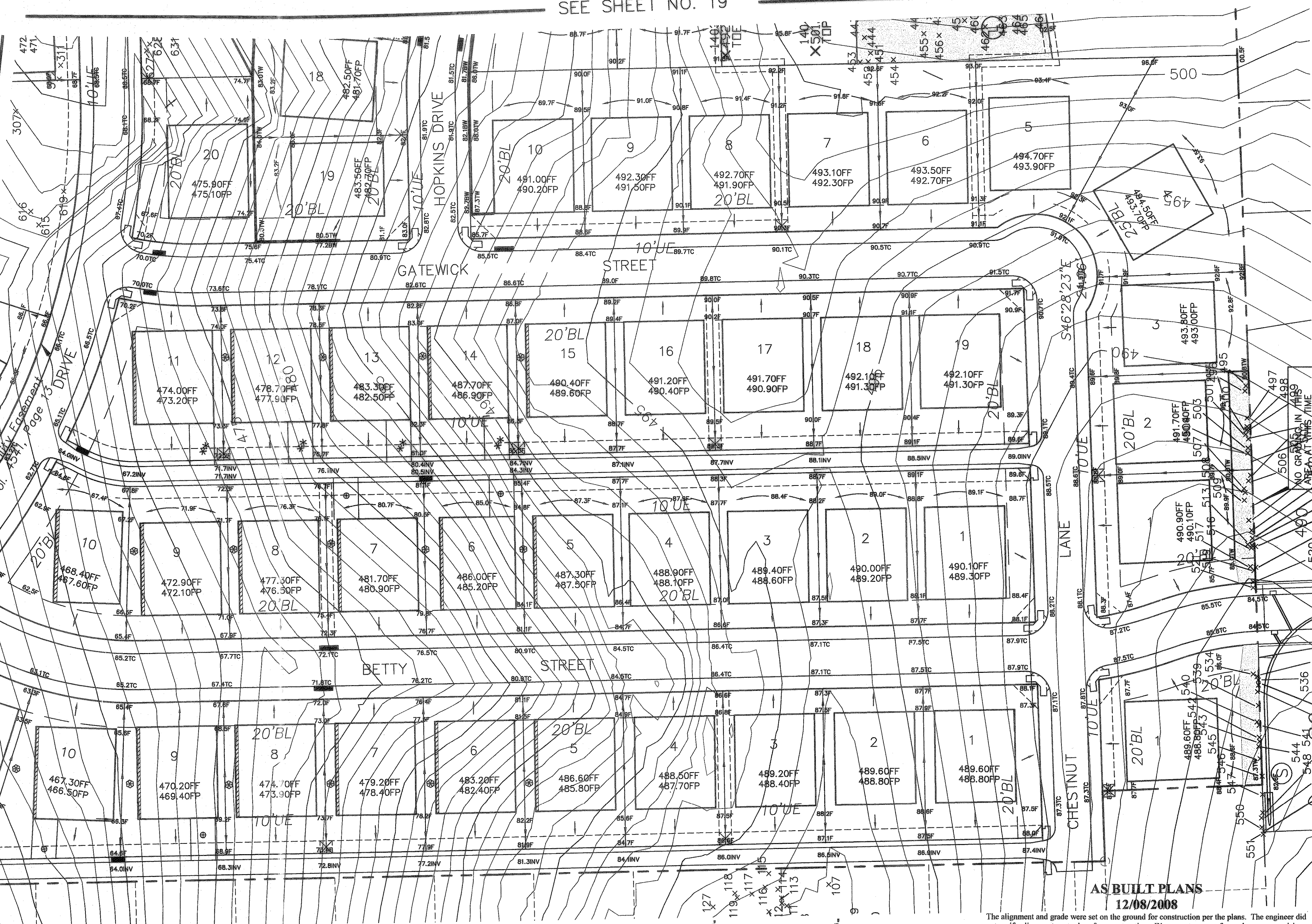


Wall Height ~ H	B	D	W
0.0' To 4.0'	16" Min.	12" Min.	12" Min.
4.0' To 6.0'	24" Min.	18" Min.	14" Min.
6.0' To 8.0'	42" Min.	24" Min.	14" Min.
8.0' To 10.0'	48" Min.	30" Min.	14" Min.

STONE WALL SECTION



SEE SHEET NO. 21



AS BUILT PLANS  
12/08/2008

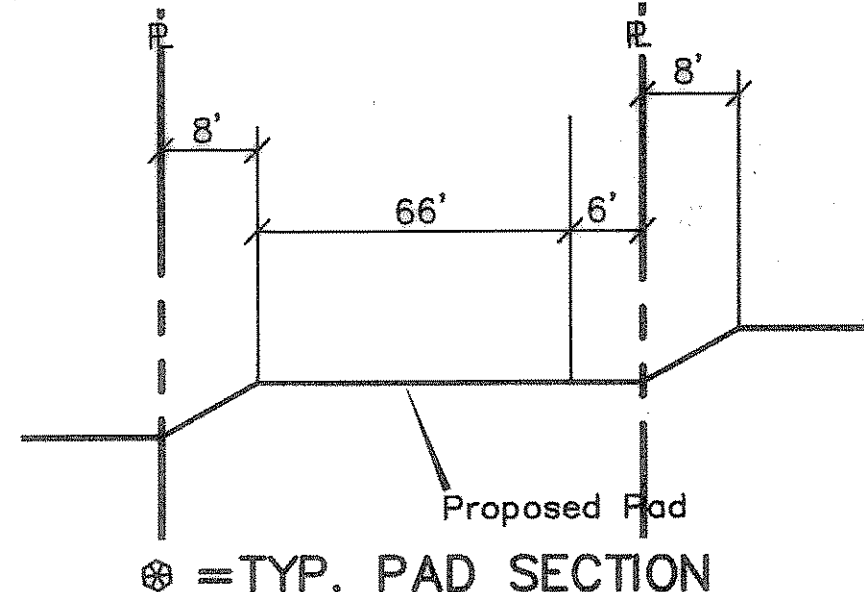
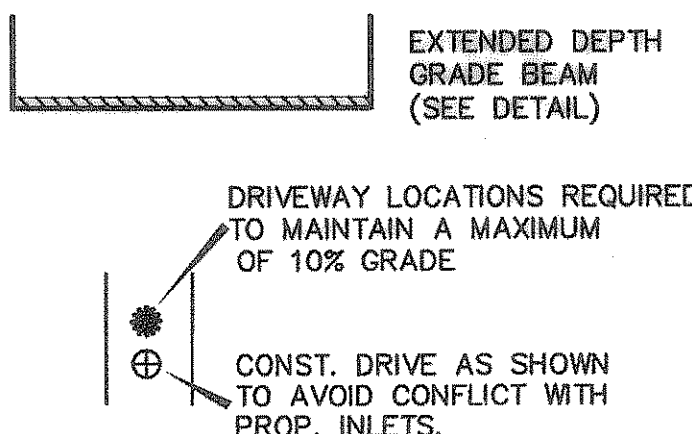
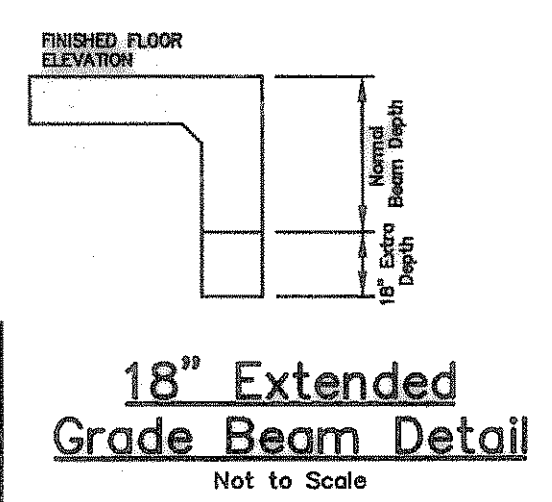
The alignment and grade were set on the ground for construction per the plans. The engineer did not verify alignment or grades after construction. We are not aware of any changes or revisions to these plans during construction except as noted.

**CAUTION!!!!**  
NTMWD UNDERGROUND FACILITIES IN THIS AREA. CONTRACTOR TO CONTACT NTMWD AT 972-442-5405 PRIOR TO ANY CONSTRUCTION IN THIS AREA.

B.M. ~ " " CUT ON EAST TOP OF CURBAT THE END OF HOLDEN DRIVE BEING N31E A DISTANCE OF 27' FROM THE CENTERLINE INTERSECTION OF HOLDEN DRIVE AND HUNT LANE. ELEVATION 508.49  
B.M. ~ " " CUT IN THE NORTH SIDE OF ALLEY IN THE MIDDLE OF LOT 17 OF HARLAN PARK PHASE 1 ELEVATION 513.23

NO PART (FOOTING, THE BACK FILTER FABRIC, ECT.) OF WALL SHALL BE IN EASEMENT, RIGHT-OF-WAY OR OFFSITE.

ALL RETAINING WALLS OVER 4 FEET IN HEIGHT SHALL BE DESIGNED INSPECTED AND APPROVED BY AN ENGINEER AND SIGNED/SEALED AND APPROVED AFTER CONSTRUCTION PRIOR TO CITY ACCEPTANCE



**LOT GRADING PLAN**  
**CASTLE RIDGE ESTATES PHASE 2**  
**ROCKWALL, ROCKWALL COUNTY, TEXAS**

**TIPTON ENGINEERING, INC.**  
ENGINEERING • SURVEYING • PLANNING  
6330 Broadway Blvd • Suite C • Garland, Texas 75043 • (972) 226-2967

DESIGN	DRAWN	DATE	SCALE	NOTES	FILE	NO.
TE, Inc.	TE, Inc.	12-06	1"=40' H.	TE, Inc.	4803	20