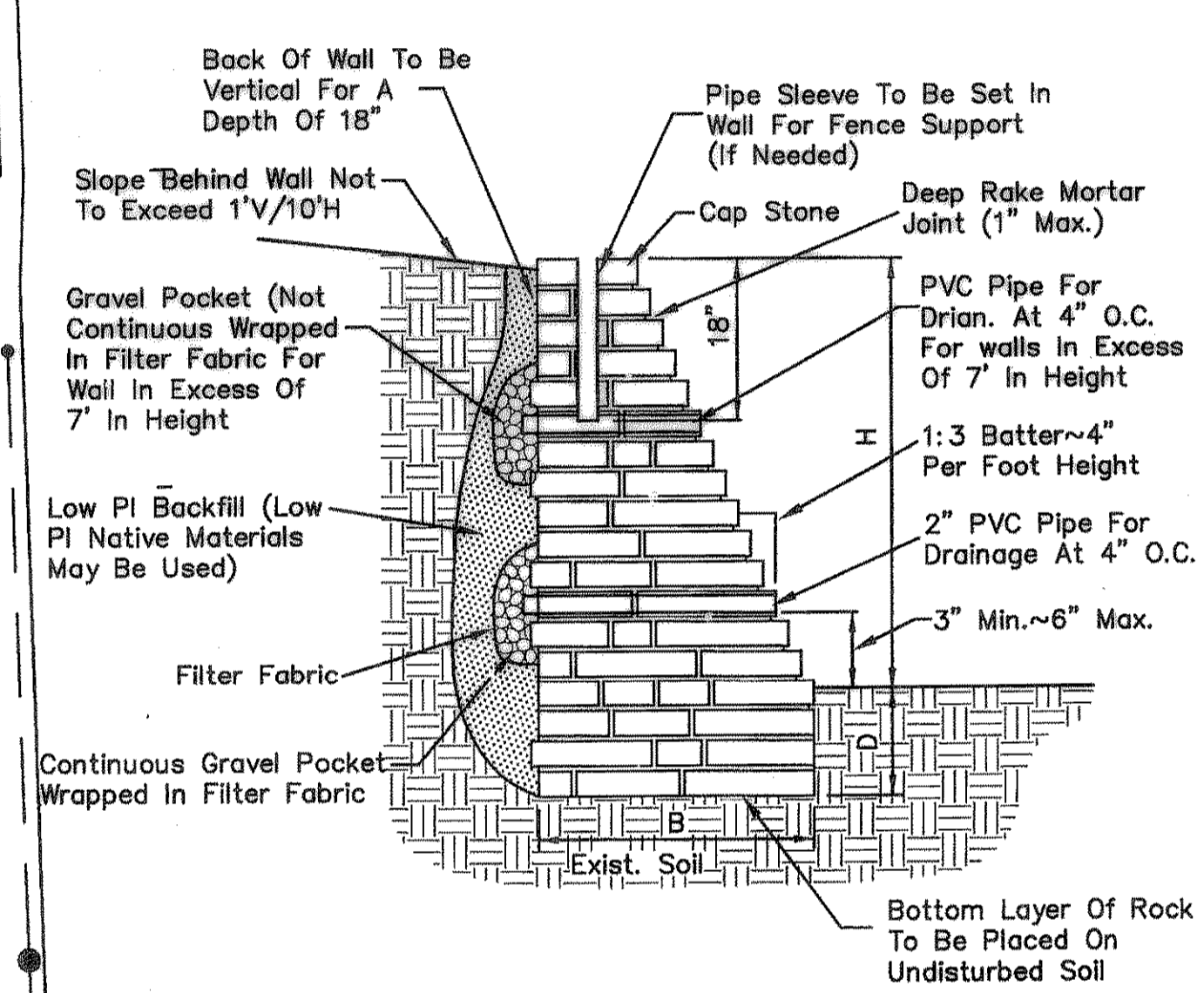
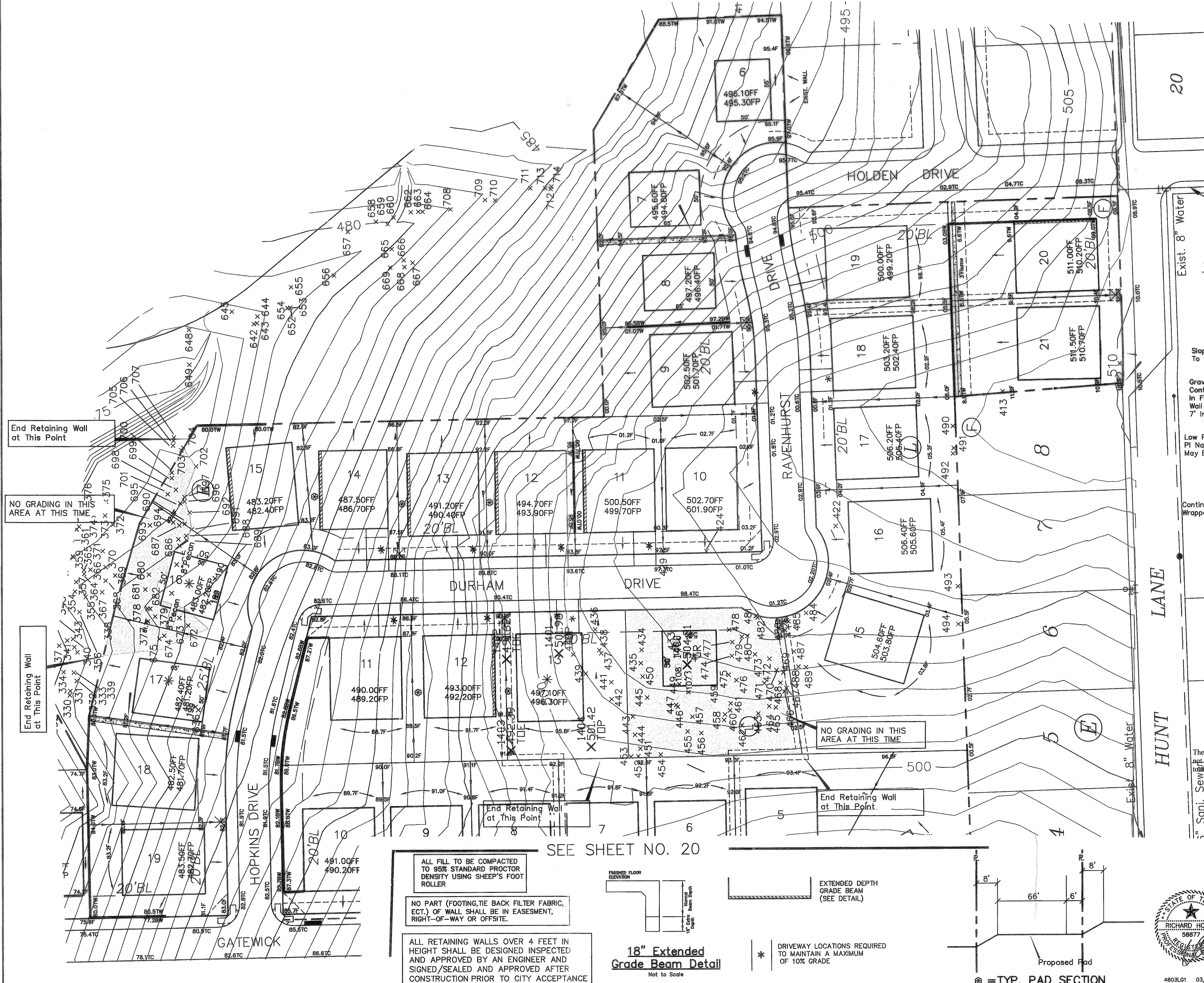


CAUTION!!!!!!
 NTMWD UNDERGROUND FACILITIES
 IN THIS AREA. CONTRACTOR TO
 CONTACT NTMWD AT 972-442-5405
 PRIOR TO ANY CONSTRUCTION
 IN THIS AREA.

NOTE: FRANCHISE UTILITIES, WATER, SANITARY
 SEWER AND STORM SEWER FACILITIES
 ARE NOT ALLOWED WITHIN THE LIMITS
 OF NTMWD EASEMENTS EXCEPT FOR
 CROSSINGS.



Wall Height ~ H	B	D	W
0.0' To 4.0'	16" Min.	12" Min.	12" Min.
4.0' To 6.0'	24" Min.	18" Min.	14" Min.
6.0' To 8.0'	42" Min.	24" Min.	14" Min.
8.0' To 10.0'	48" Min.	30" Min.	14" Min.

STONE WALL SECTION

* LOTS NOT TO BE GRADED UNTIL SPECIFIC PLANS ARE SUBMITTED

AS BUILT PLANS
 12/08/2008

The alignment and grade were set on the ground for construction per the plans. The engineer did not verify alignment or grades after construction. We are not aware of any changes or revisions to these plans during construction except as noted.

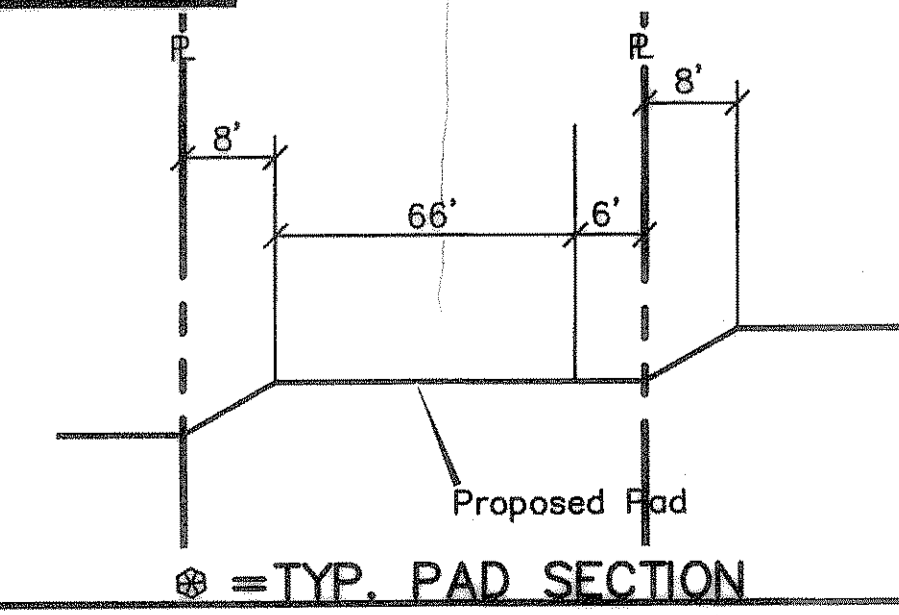
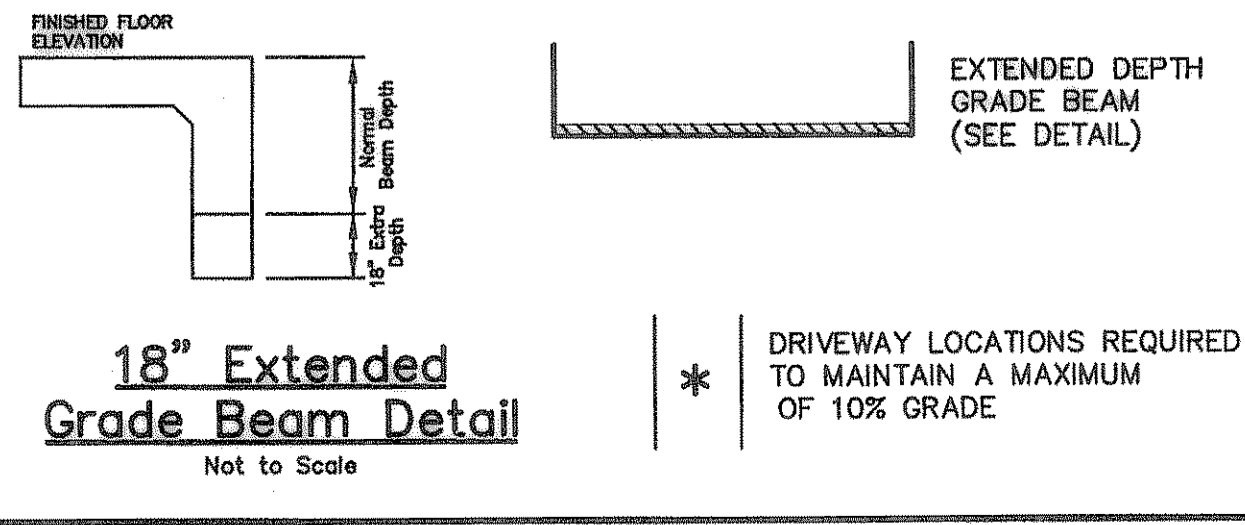
B.M. ~ " " CUT ON EAST TOP OF CURBAT THE END OF HOLDEN DRIVE BEING N31E A DISTANCE OF 27' FROM THE CENTERLINE INTERSECTION OF HOLDEN DRIVE AND HUNT LANE. ELEVATION 508.49

B.M. ~ " " CUT IN THE NORTH SIDE OF ALLEY IN THE MIDDLE OF LOT 17 OF HARLAN PARK PHASE 1 ELEVATION 513.23

ALL FILL TO BE COMPACTED TO 95% STANDARD PROCTOR DENSITY USING SHEEP'S FOOT ROLLER

NO PART (FOOTING, TIE BACK FILTER FABRIC, ECT.) OF WALL SHALL BE IN EASEMENT, RIGHT-OF-WAY OR OFFSITE.

ALL RETAINING WALLS OVER 4 FEET IN HEIGHT SHALL BE DESIGNED INSPECTED AND APPROVED BY AN ENGINEER AND SIGNED/SEALED AND APPROVED AFTER CONSTRUCTION PRIOR TO CITY ACCEPTANCE.



LOT GRADING PLAN
CASTLE RIDGE ESTATES PHASE 2
ROCKWALL, ROCKWALL COUNTY, TEXAS
TIPTON ENGINEERING, INC.

ENGINEERING • SURVEYING • PLANNING
 6330 Broadway Blvd. • Suite C • Garland, Texas 75043 • (972) 226-2967

DESIGN	DRAWN	DATE	SCALE	NOTES	FILE	NO.
TE, Inc.	TE, Inc.	12-06	1"=40' H.	TE, Inc.	4803	19