

DEVELOPMENT PLANS FOR CASTLE RIDGE ESTATES PHASE 2 CITY OF ROCKWALL, TEXAS

GENERAL NOTES

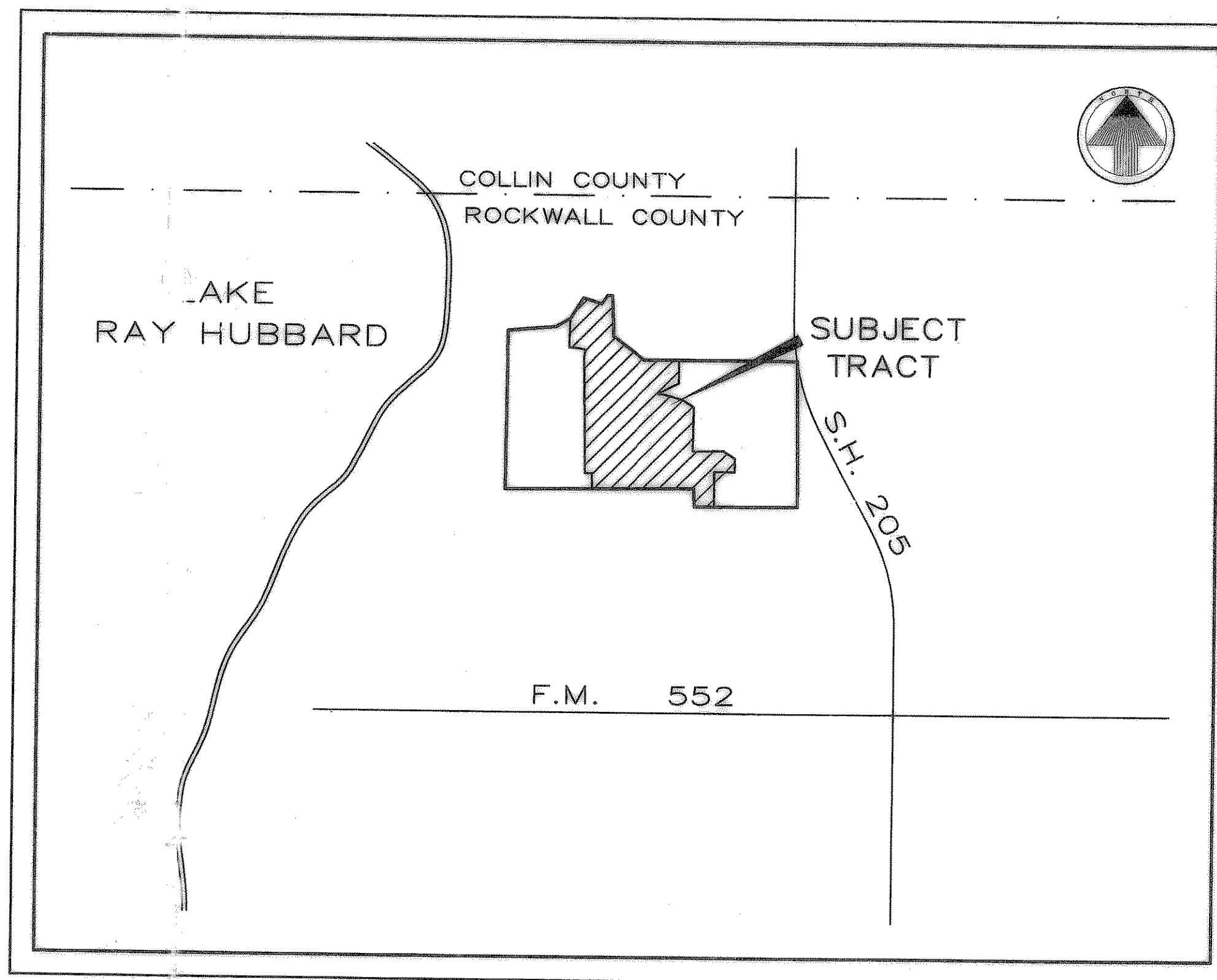
1. All street and alleys intersections and connections shall be built by the developer.
2. Excavation from streets to be deposited in low areas to allow proper drainage.
3. All existing ditches, except as noted on drainage plans, are to be filled to conform to surrounding terrain.
4. It will be the responsibility of the developer and/ or the contractor to protect and maintain to proper line and grade all public utilities, manholes, cleanouts, valve boxes, fire hydrants, etc. during the construction of this project, prior to and after placing permanent pavement.
5. All materials and workmanship shall conform to the City Standards and Specifications.
6. All Fill Shall be Compacted with Sheep's Foot Roller.

NORTH TEXAS MUNICIPAL WATER DISTRICT NOTES

- A. North Texas Municipal Water District (NTMWD) 20-inch water transmission pipeline is located within limits of construction.
- B. Operation of heavy earthmoving equipment, compaction equipment or heavy construction equipment, such as concrete trucks, shall be restricted to specific crossing points across NTMWD easements, as approved by the NTMWD. The crossings shall be designated and verified to provide a minimum of five feet of cover.
- C. To assure that placing of significant loads over the NTMWD pipeline does not damage the existing pipeline, no materials shall be stockpiled on the NTMWD easement without authorization from the NTMWD. If the contractor desires to use NTMWD's easement for stockpile of materials, contact NTMWD Engineering at (972) 442-5405 so your plans for use of NTMWD's easement can be reviewed.
- D. In areas where the cover between the top of the NTMWD pipeline and the bottom of the sub-grade is three (3) feet or less, it is requested that the subgrade preparation be deleted and a thickened pavement section be used to limit construction activities over the pipeline.
- E. Crossing of the NTMWD easement with other utilities, such as TV cable, phone, gas, and electric, shall be coordinated with the NTMWD to avoid damage to the NTMWD facilities.
- F. Outdoor lighting, landscaping, screening walls or other facilities shall not be installed in NTMWD easements without the written approval of the NTMWD.
- G. Unless otherwise shown or required, a minimum of one-foot clearance shall be provided for all utilities crossing the NTMWD pipelines.
- H. "The contractor shall contact NTMWD Engineering at (972) 442-5405 at least 48 hours prior to performing any work in the vicinity of the NTMWD facilities."

CAUTION Existing North Texas Municipal Water District Facilities

The Contractor shall contact NTMWD Engineering at 972-442-5405 at least 48 hours prior to performing any work in the vicinity of N.T.M.W.D. facilities.



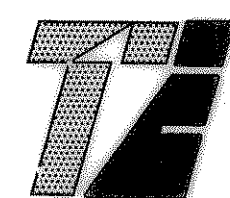
LOCATION MAP
NOT TO SCALE

INDEX

| Sheet No. | Description |
|-----------|---------------------------------------|
| 1-2 | Final Plat |
| 3-10 | Paving Plans |
| 11 | Drainage Area Map |
| 12-15 | Storm Sewer Plans |
| 16 | Water & Sewer Plans |
| 17 | Sanitary Sewer Profiles |
| 18 | Storm Water Pollution Prevention Plan |
| 19-21 | Lot Grading Plans |
| 22 | Tree Preservation Plan |

PREPARED FOR
NEWMARK HOMES, INC.

11498 Luna Road - Suite 101 - Dallas, Texas 75234



TIPTON ENGINEERING, INC.

6330 Broadway Blvd. ~ Suite C ~ Garland, Texas 75043 (972) 226-2967

**AS BUILT PLANS
12/08/2008**

The alignment and grade were set on the ground for construction per the plans. The engineer did not verify alignment or grades after construction. We are not aware of any changes or revisions to these plans during construction except as noted.

