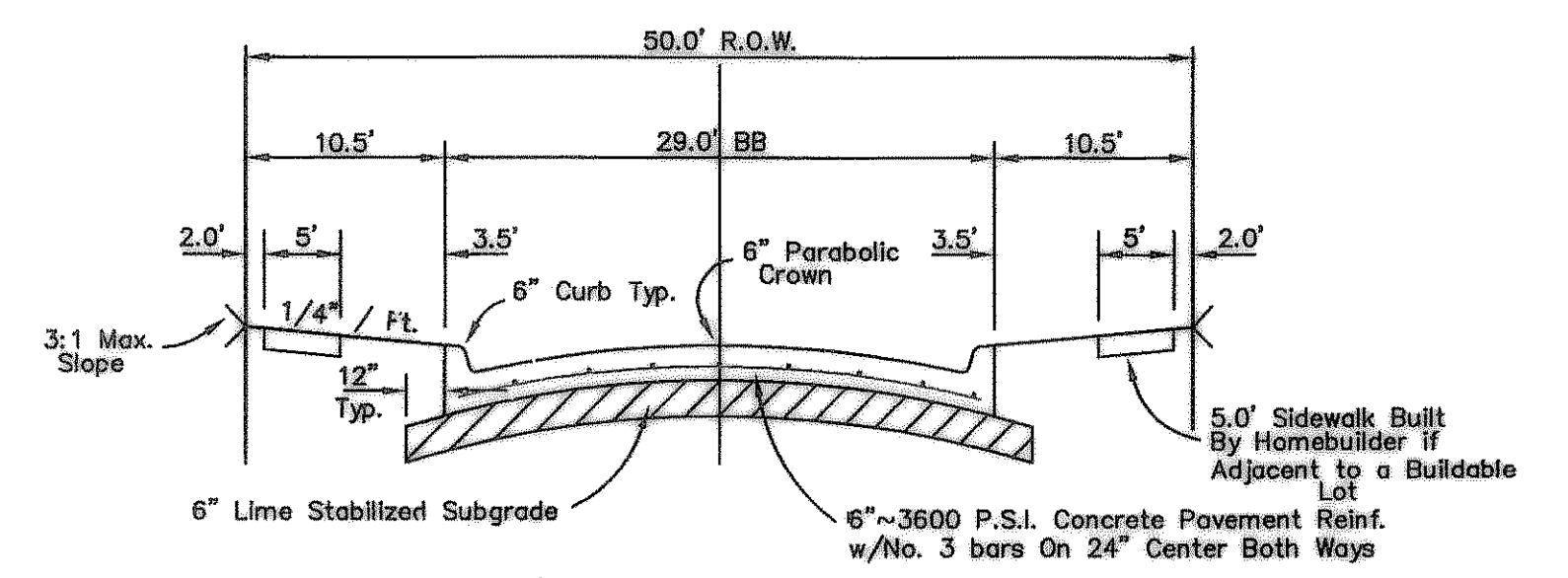


Construct 4' Wide
Overflow Flume See
Detail This Sheet

STA. 1+85.00 ~ CONST.
2-10' CURB INLETS
TC=481.50, FC=477.50

CURVE DATA
R=1445.36'
E=300.00'
L=77.28'
L=77.28'

STA. 4+97.81 GATEWICK DR.=
STA. 0+00.00 HOPKINS DR.

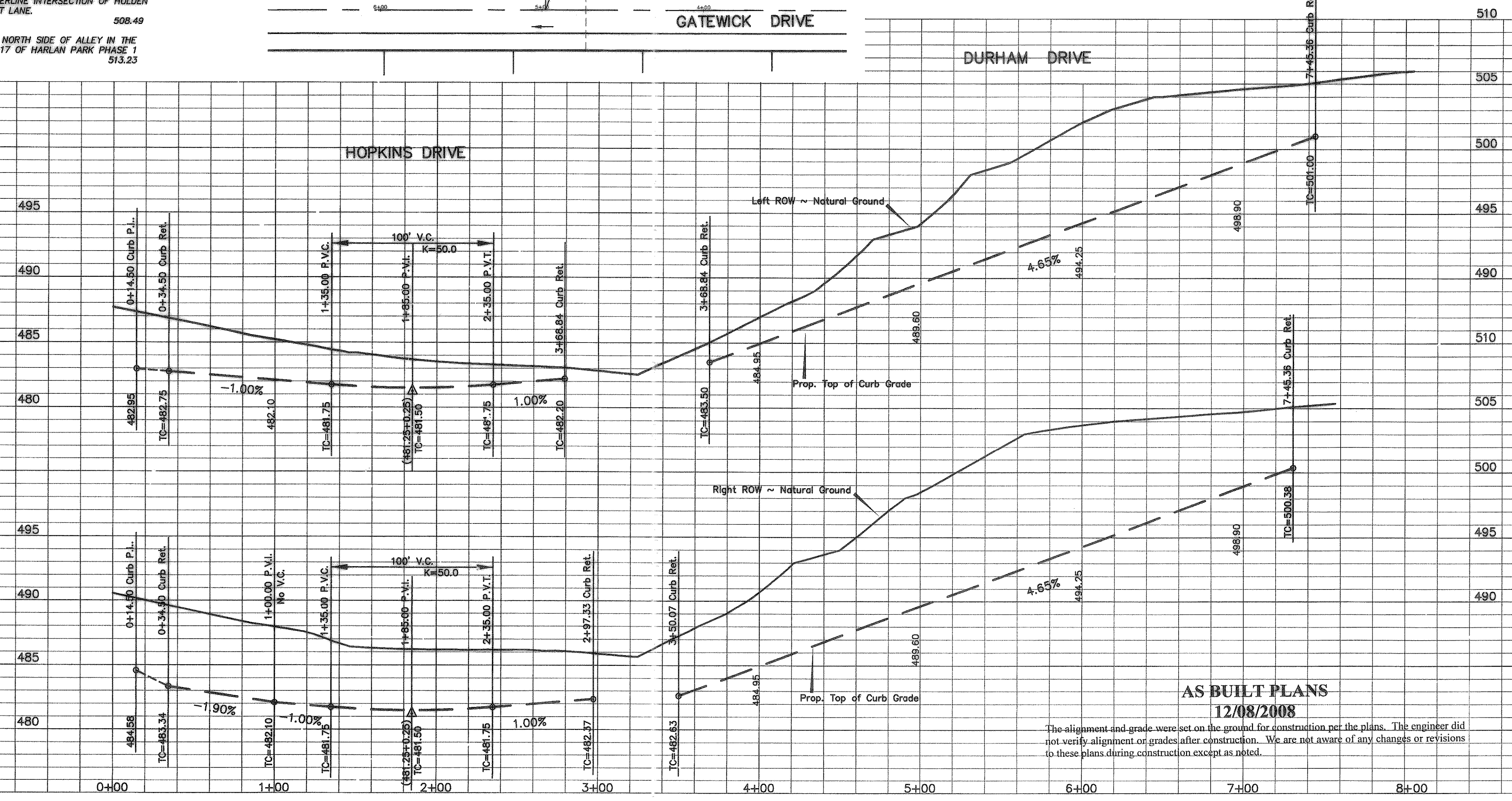
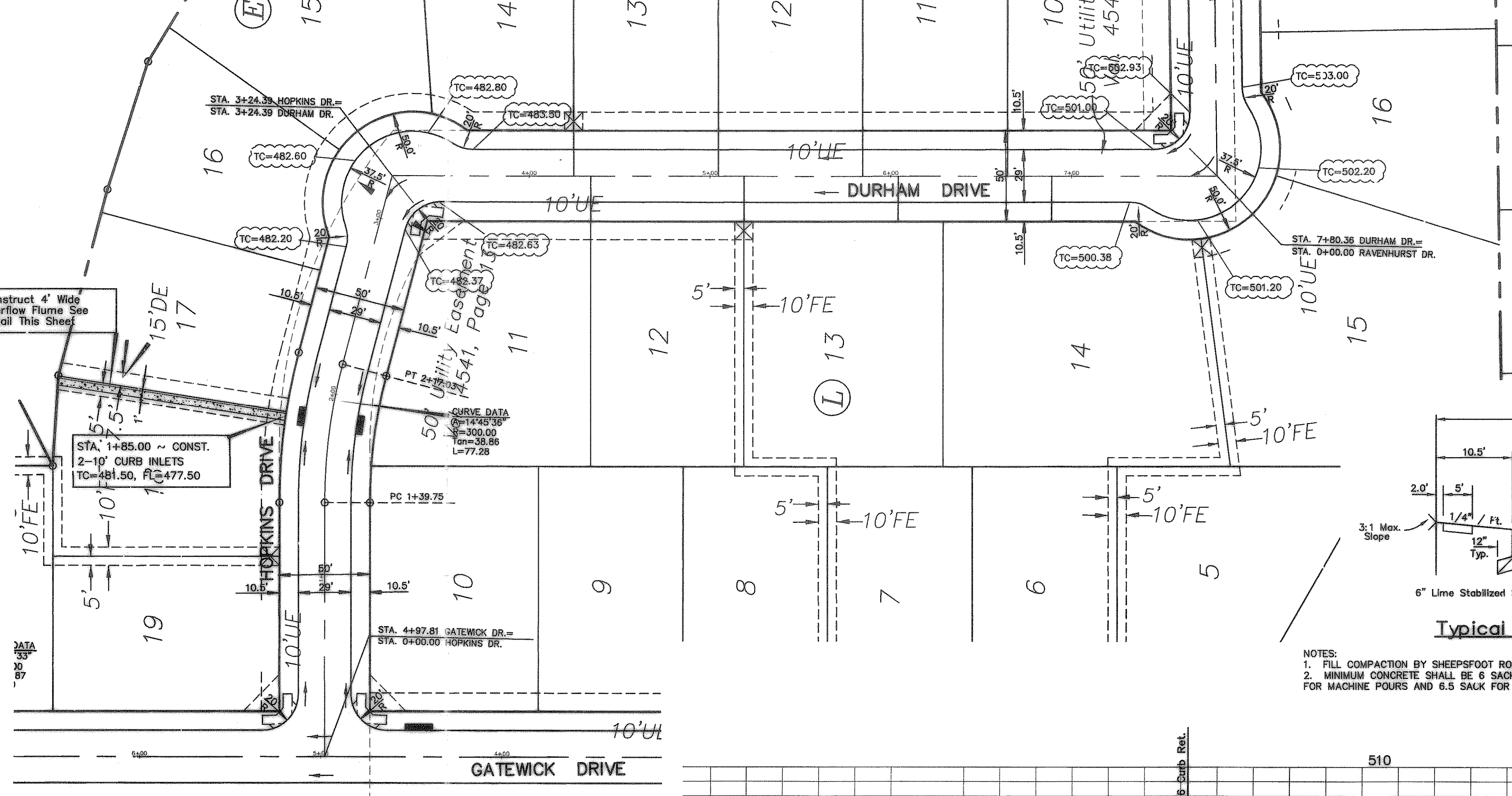


Typical 29' BB Pavement Section
Not To Scale

- NOTES:
1. FILL COMPACTION BY SHEEPSFOOT ROLLER MIN 95% STD. DENSITY.
2. MINIMUM CONCRETE SHALL BE 6 SACK (3600PSI) FOR MACHINE POURS AND 6.5 SACK FOR HAND POURS
- Sidewalks to be Built by Developer if Adjacent to Open Space

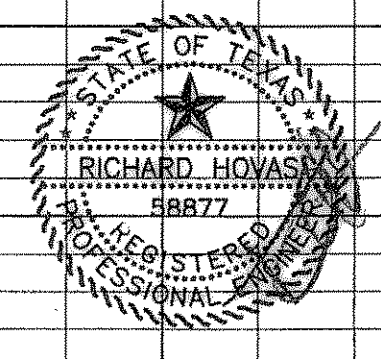
B.M. ~ "E" CUT ON EAST TOP OF CURBAT THE END OF HOLDEN DRIVE BEING N31E A DISTANCE OF 27' FROM THE CENTERLINE INTERSECTION OF HOLDEN DRIVE AND HUNT LANE. ELEVATION 508.49

B.M. ~ "X" CUT IN THE NORTH SIDE OF ALLEY IN THE MIDDLE OF LOT 17 OF HARLAN PARK PHASE 1 ELEVATION 513.23



AS BUILT PLANS
12/08/2008

The alignment and grade were set on the ground for construction per the plans. The engineer did not verify alignment or grades after construction. We are not aware of any changes or revisions to these plans during construction except as noted.



HOPKINS DRIVE / DURHAM DRIVE
PAVING PLAN
CASTLE RIDGE ESTATES PHASE 2
CITY OF ROCKWALL
TIPTON ENGINEERING, INC.

ENGINEERING • SURVEYING • PLANNING
6330 Broadway Blvd. • Suite C • Garland, Texas 75043 • (972) 226-2867

DESIGN	DRAWN	DATE	SCALE	NOTES	FILE	NO.
TE, Inc.	TE, Inc.	12-08	1"=40' H. 1"=5' V.	TE, Inc.	4803	6