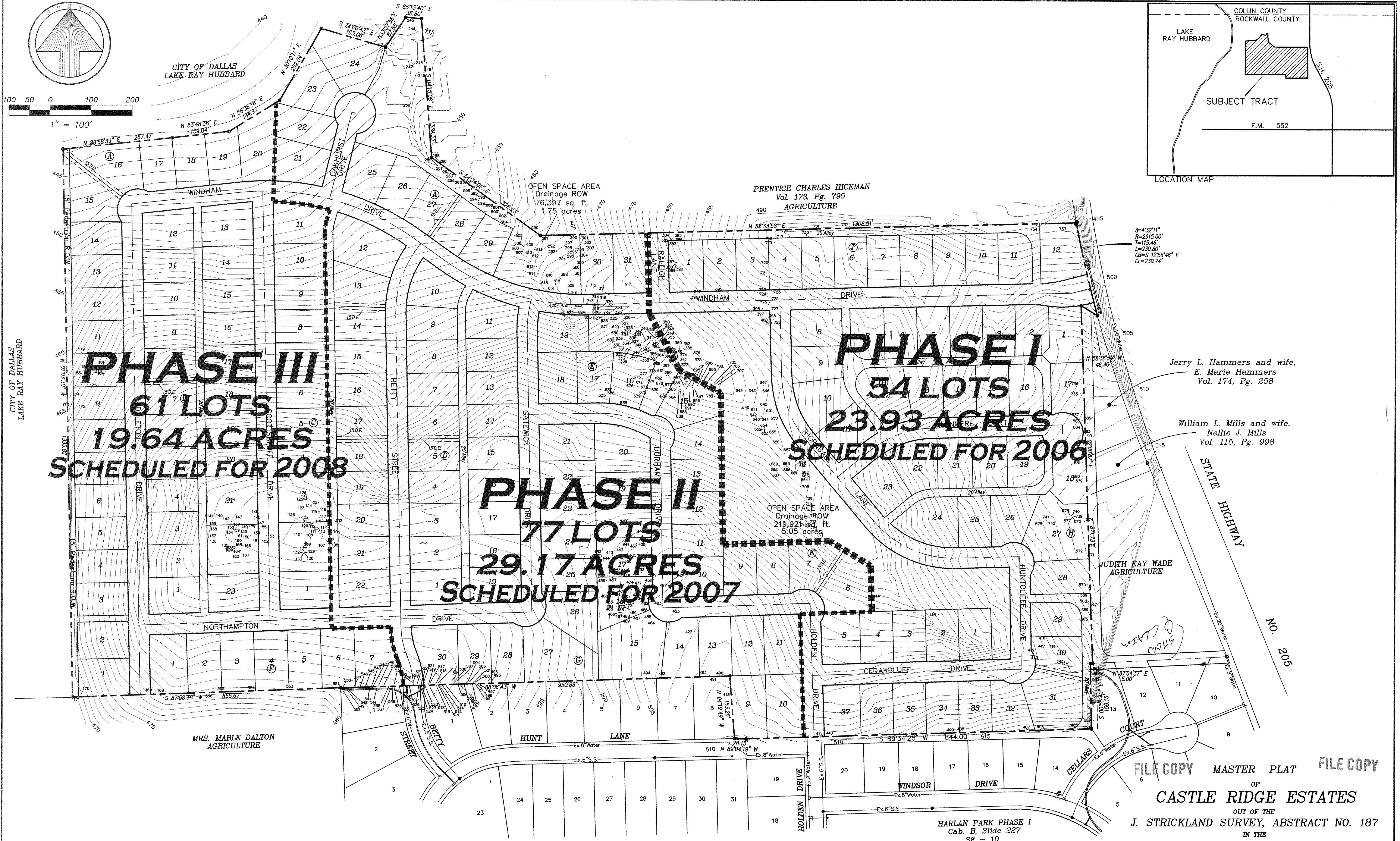
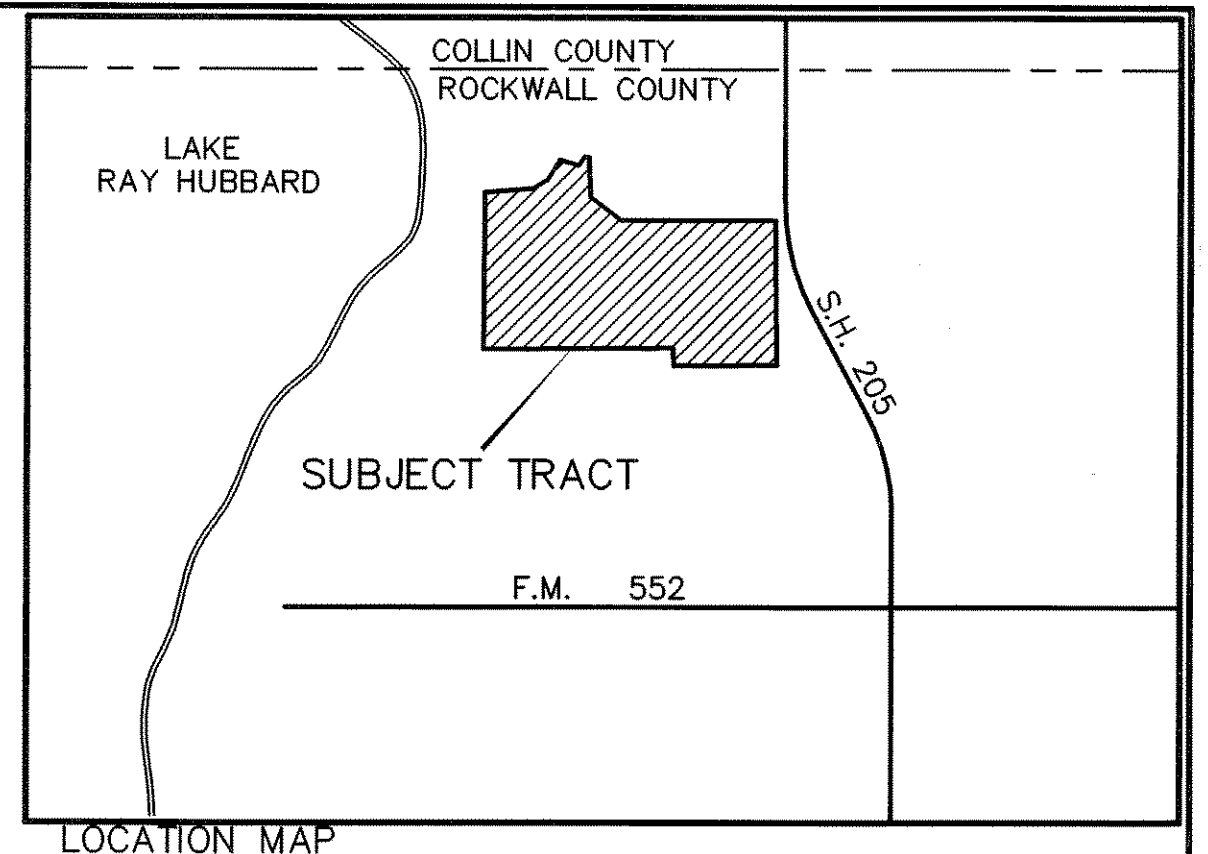


100 50 0 100 200
1" = 100'



PHASE III
61 LOTS
19.64 ACRES
SCHEDULED FOR 2008

PHASE II
77 LOTS
29.17 ACRES
SCHEDULED FOR 2007

PHASE I
54 LOTS
23.93 ACRES
SCHEDULED FOR 2006

$\Delta=4'32.11"$
 $R=2915.00'$
 $T=715.46'$
 $CB=S 12'56.46" E$
 $CL=230.74'$

Jerry L. Hammers and wife,
E. Marie Hammers
Vol. 174, Pg. 258

William L. Mills and wife,
Nellie J. Mills
Vol. 115, Pg. 998

JUDITH KAY WADE
AGRICULTURE

MRS. MABLE DALTON
AGRICULTURE

HERITAGE HEIGHTS ADDITION
Cab. B, Slide 88

HARLAN PARK PHASE I
Cab. B, Slide 227
SF - 10

FILE COPY MASTER PLAT FILE COPY

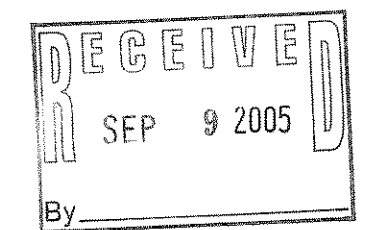
OF
CASTLE RIDGE ESTATES

OUT OF THE
J. STRICKLAND SURVEY, ABSTRACT NO. 187

IN THE
CITY OF ROCKWALL, ROCKWALL COUNTY, TEXAS

SCALE: 1"=100' ~ DATE: 9-08-05 ~ 192 LOTS ~ 72.7396 ACRES

Note:
The proposed Castle Ridge Estates has adequate water distribution sources from two locations. The sanitary sewer collection system will require a lift station. Access is provided with two City of Rockwall dedicated streets and a State Highway. The sites drainage will be to Lake Ray Hubbard.



~ DEVELOPER ~
NEWMARK HOMES, INC.
11488 Luna Road ~ Suite 101 ~ Dallas, Texas 75244
#005 031
~ ENGINEER ~
TIPTON ENGINEERING, INC.
6330 Broadway Blvd. ~ Suite C ~ Garland, Texas 75043
972.226.2967
8/19/05 #4802pp

194 LOTS @ SF-10 STANDARDS ON 72.7396 ACRES = 2.66 U/P/AC.