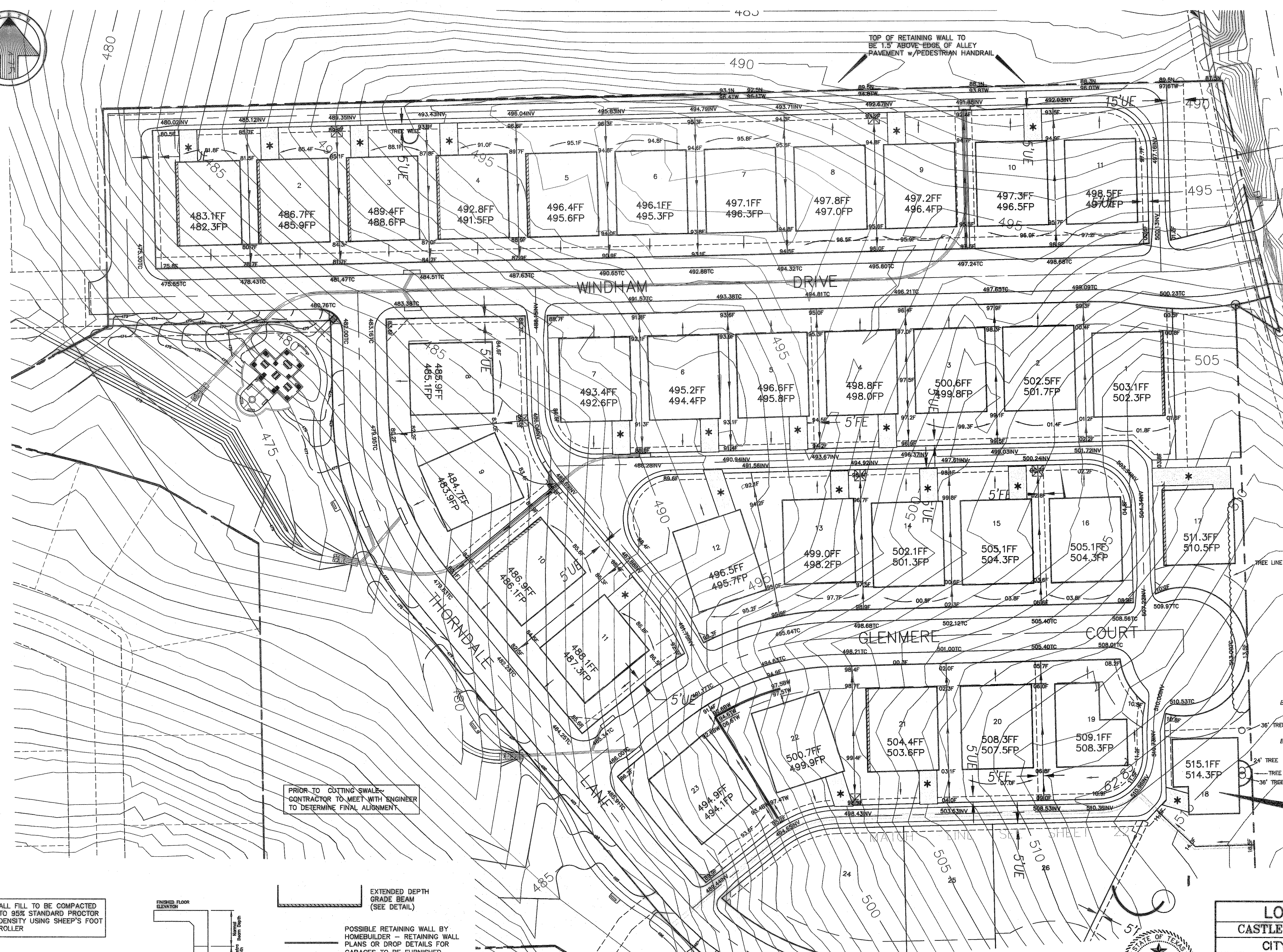


CAUTION!!!!!!
 NTMWD UNDERGROUND FACILITIES
 IN THIS AREA. CONTRACTOR TO
 CONTACT NTMWD AT 972-442-5405
 PRIOR TO ANY CONSTRUCTION
 IN THIS AREA.

NOTE: FRANCHISE UTILITIES, WATER, SANITARY
 SEWER AND STORM SEWER FACILITIES
 ARE NOT ALLOWED WITHIN THE LIMITS
 OF NTMWD EASEMENTS EXCEPT FOR
 CROSSINGS.

NTMWD EASEMENT
 Vol. 91, Pg. 183



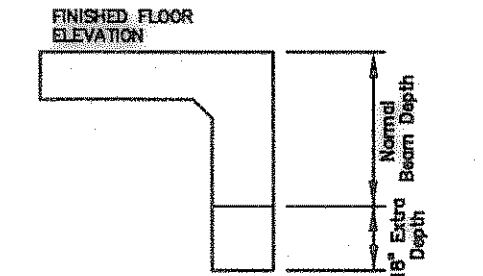
PRIOR TO CUTTING SWALES
 CONTRACTOR TO MEET WITH ENGINEER
 TO DETERMINE FINAL ALIGNMENT.

B.M. ~ "C" CUT ON EAST TOP OF CURB AT THE END OF
 HOLDEN DRIVE BEING 43.15' A DISTANCE OF 20'
 FROM THE CENTERLINE INTERSECTION OF HOLDEN
 DRIVE AND HUNT LANE.
 ELEVATION 510.249

B.M. ~ "X" CUT IN THE NORTH SIDE OF ALLEY IN THE
 MIDDLE OF LOT 17 OF HARLAN PARK PHASE 1
 ELEVATION 513.223

NO GRADING ON THIS LOT
 UNTIL BUILDING PERMIT

ALL FILL TO BE COMPACTED
 TO 95% STANDARD PROCTOR
 DENSITY USING SHEEP'S FOOT
 ROLLER



**18" Extended
 Grade Beam Detail**
 Not to Scale

EXTENDED DEPTH
 GRADE BEAM
 (SEE DETAIL)

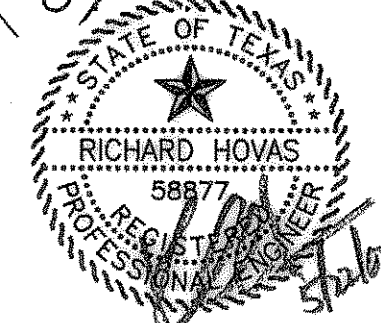
POSSIBLE RETAINING WALL BY
 HOMEOWNER - RETAINING WALL
 PLANS OR DROP DETAILS FOR
 GARAGES TO BE FURNISHED
 BY HOMEOWNER PRIOR TO CONST.

* DRIVEWAY LOCATIONS REQUIRED
 TO MAINTAIN A MAXIMUM
 OF 10% GRADE

ALL RETAINING WALLS OVER 4 FEET IN
 HEIGHT SHALL BE DESIGNED BY AN
 ENGINEER AND SIGNED/SEALED AND
 APPROVED AFTER CONSTRUCTION
 PRIOR TO CITY ACCEPTANCE

AS BUILT PLANS
 5/11/2007

The alignment and grade were set on the ground for construction per the plans. The engineer did not verify alignment or grades after construction. We are not aware of any changes or revisions to these plans during construction except as noted.



LOT GRADING PLAN						
CASTLE RIDGE ESTATES PHASE 1						
CITY OF ROCKWALL, TEXAS						
TIPTON ENGINEERING, INC.						
ENGINEERING • SURVEYING • PLANNING						
6330 Broadway Blvd. • Suite C • Garland, Texas 75043 • (972) 228-2967						
DESIGN	DRAWN	DATE	SCALE	NOTES	FILE	NO.
TE, Inc.	TE, Inc.	10-05	1"=40' H.	TE, Inc.	4802	21