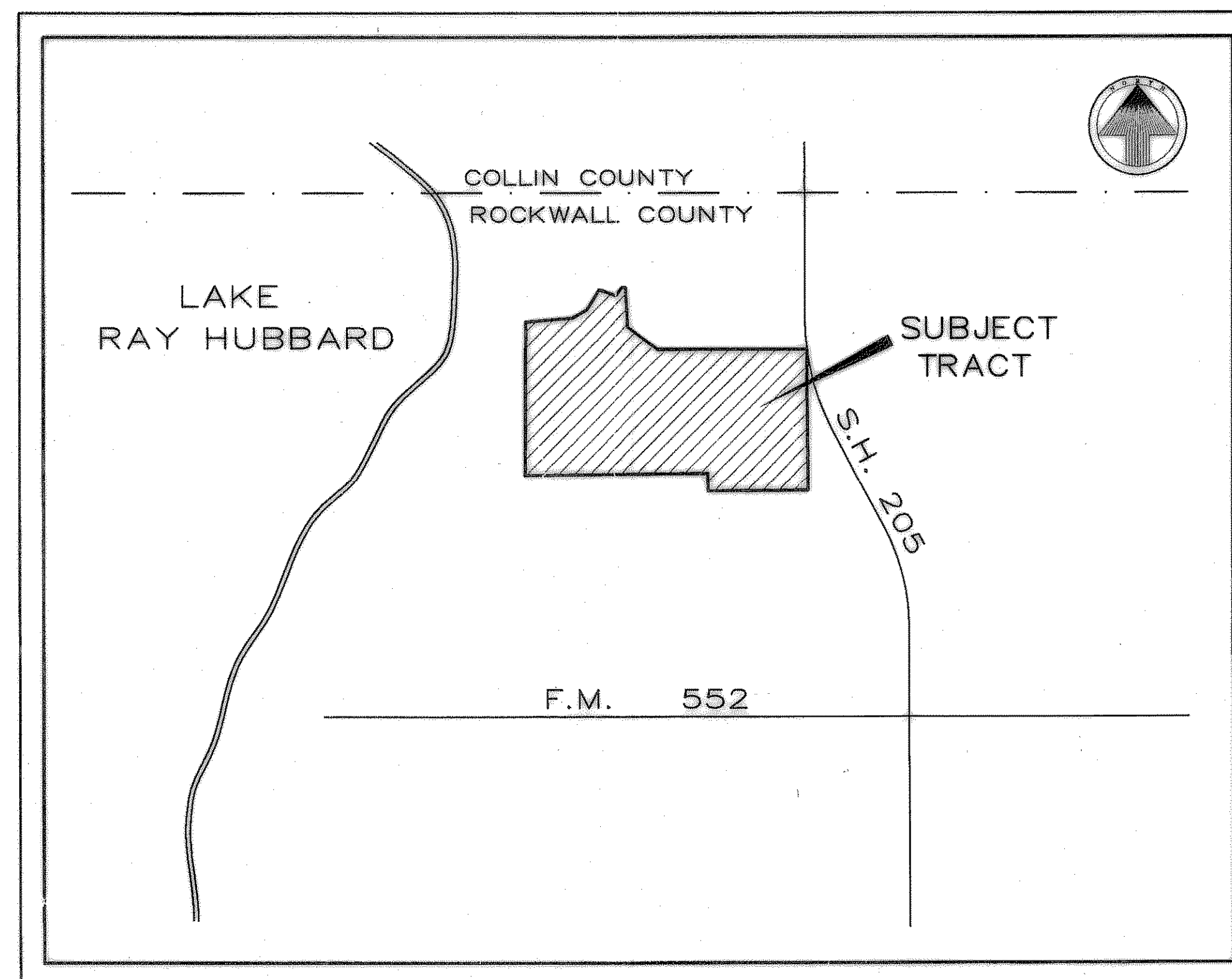


DEVELOPMENT PLANS FOR CASTLE RIDGE ESTATES PHASE 1 CITY OF ROCKWALL, TEXAS

GENERAL NOTES

1. All street and alleys intersections and connections shall be built by the developer.
2. Excavation from streets to be deposited in low areas to allow proper drainage.
3. All existing ditches, except as noted on drainage plans, are to be filled to conform to surrounding terrain.
4. It will be the responsibility of the developer and/ or the contractor to protect and maintain to proper line and grade all public utilities, manholes, cleanouts, valve boxes, fire hydrants, etc. during the construction of this project, prior to and after placing permanent pavement.
5. All materials and workmanship shall conform to the City Standards and Specifications.
6. All Fill Shall be Compacted with Sheep's Foot Roller.



LOCATION MAP
NOT TO SCALE

INDEX

Sheet No.	Description
1-2	Final Plat
3-8	Paving Plans
9	Drainage Area Map
10-13	Storm Sewer Plans
14	Water & Sewer Plans
15-16	Sanitary Sewer Profiles
17-17A	Offsite Force Main Plan
18	Force Main Profile
19-19A	Lift Station Detail
20	Storm Water Pollution Prevention Plan
21-22	Lot Grading Plans
23	Tree Preservation Plan
24	T.X.D.O.T. Left Turn Lane Plan

PREPARED FOR
NEWMARK HOMES, INC.

11498 Luna Road - Suite 101 - Dallas, Texas 75234



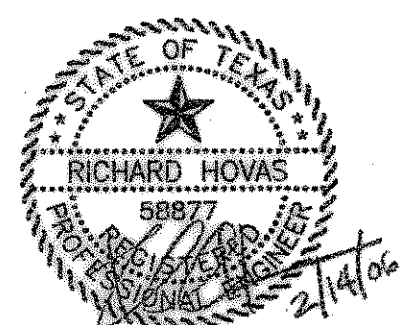
TIPTON ENGINEERING, INC.

6330 Broadway Blvd. ~ Suite C ~ Garland, Texas 75043 (972) 226-2967

AS BUILT PLANS

05/11/07

The alignment and grade were set on the ground for construction per the plans. The engineer did not verify alignment or grades after construction. We are not aware of any changes or revisions to these plans during construction except as noted.



CASTLE RIDGE ESTATES PHASE 1