

CAUTION !!!
EXISTING UTILITIES

EXISTING UTILITIES AND UNDERGROUND FACILITIES INDICATED ON THESE PLANS HAVE BEEN LOCATED FROM REFERENCE INFORMATION. IT SHALL BE THE RESPONSIBILITY OF THE CONTRACTOR TO VERIFY BOTH HORIZONTALLY AND VERTICALLY THE LOCATION OF ALL EXISTING UTILITIES AND UNDERGROUND FACILITIES PRIOR TO CONSTRUCTION, TO TAKE NECESSARY PRECAUTIONS IN ORDER TO PROTECT ALL FACILITIES ENCOUNTERED. THE CONTRACTOR SHALL PRESERVE AND PROTECT ALL EXISTING UTILITIES FROM DAMAGE DURING CONSTRUCTION.

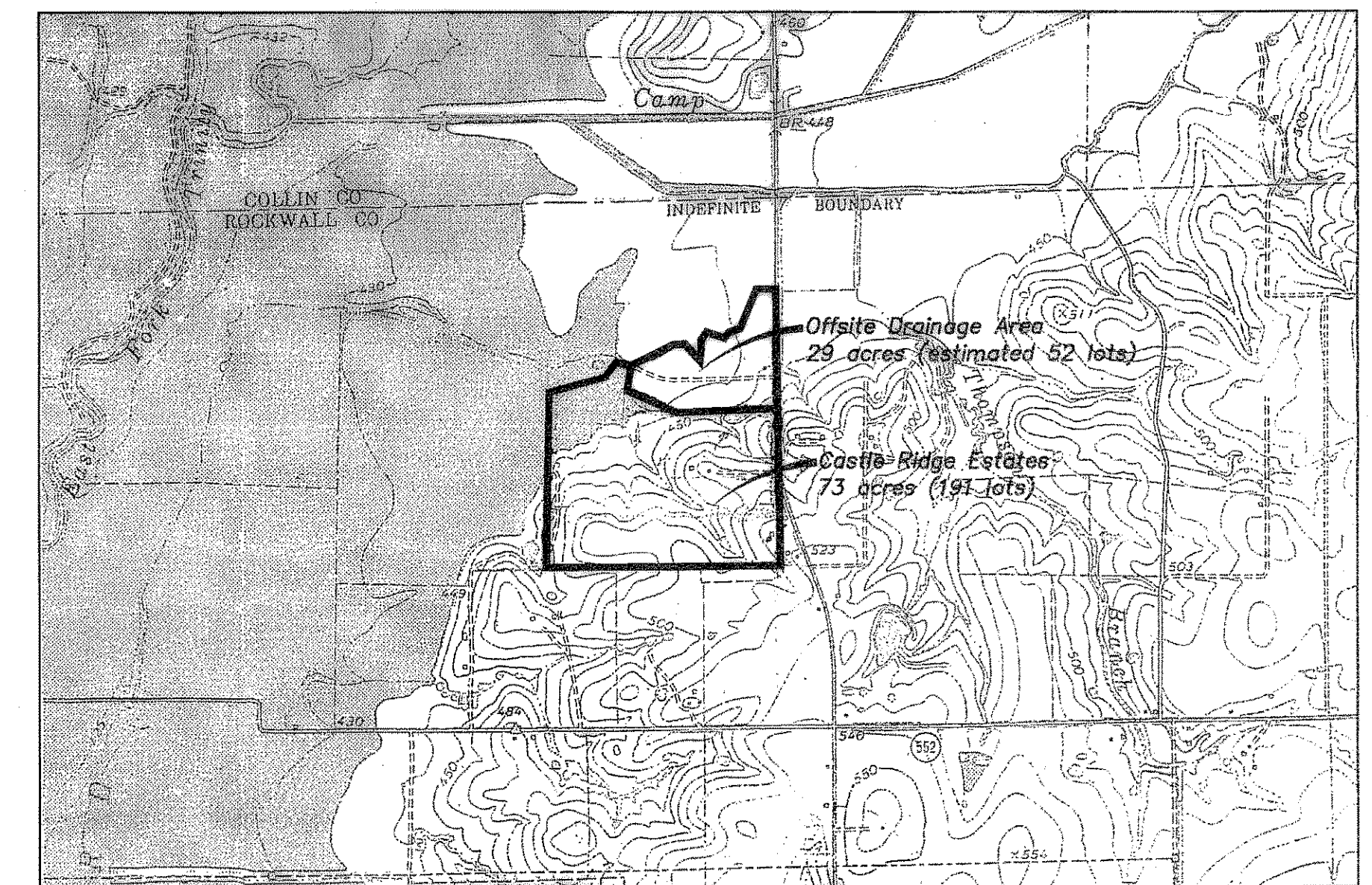
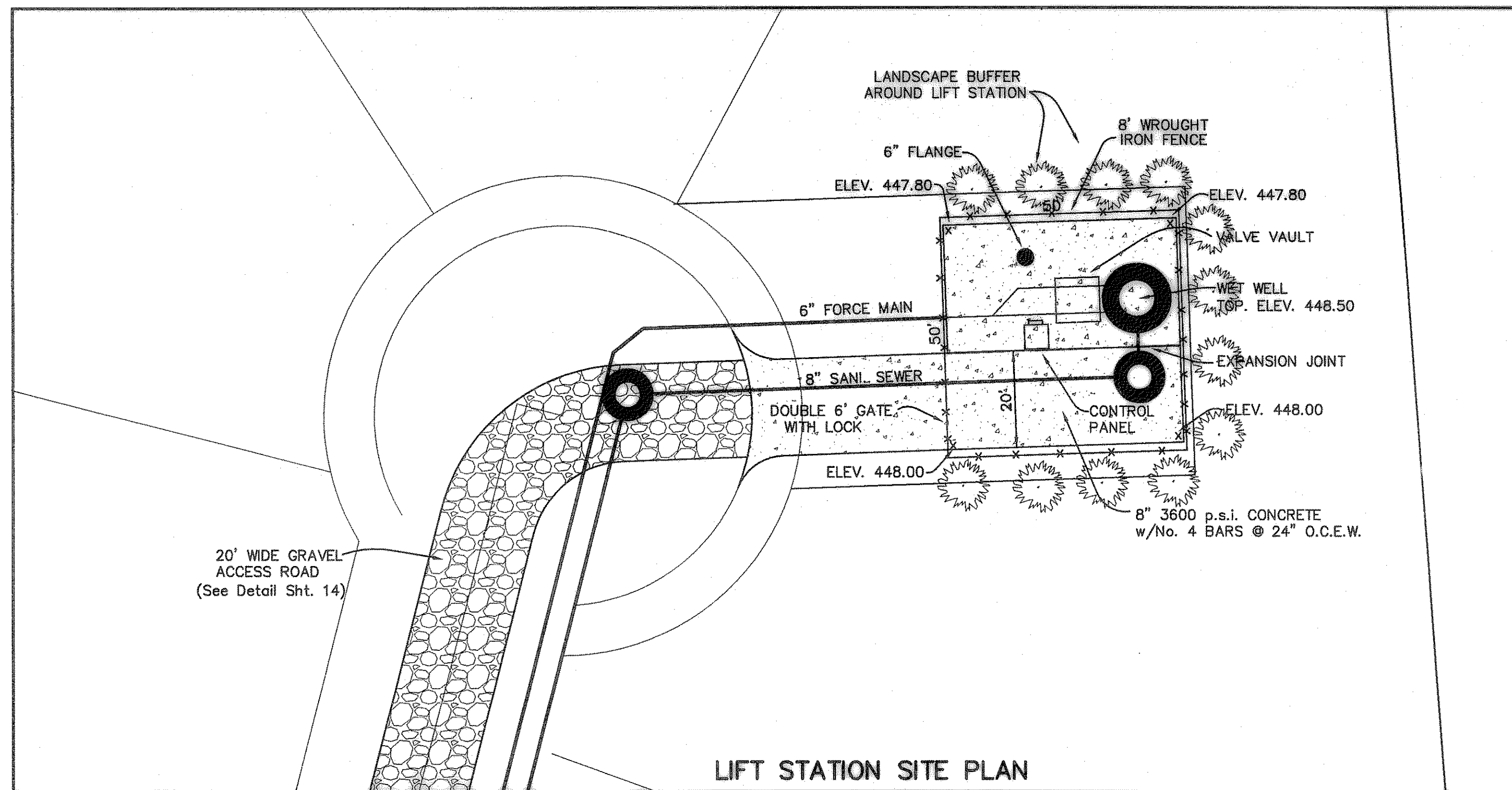
CAUTION!!!!
NTMWD UNDERGROUND FACILITIES IN THIS AREA. CONTRACTOR TO CONTACT NTMWD AT 972-442-5405 PRIOR TO ANY CONSTRUCTION IN THIS AREA.

NOTE : FRANCHISE UTILITIES, WATER, SANITARY SEWER AND STORM SEWER FACILITIES ARE NOT ALLOWED WITHIN THE LIMITS OF NTMWD EASEMENTS EXCEPT FOR CROSSINGS.

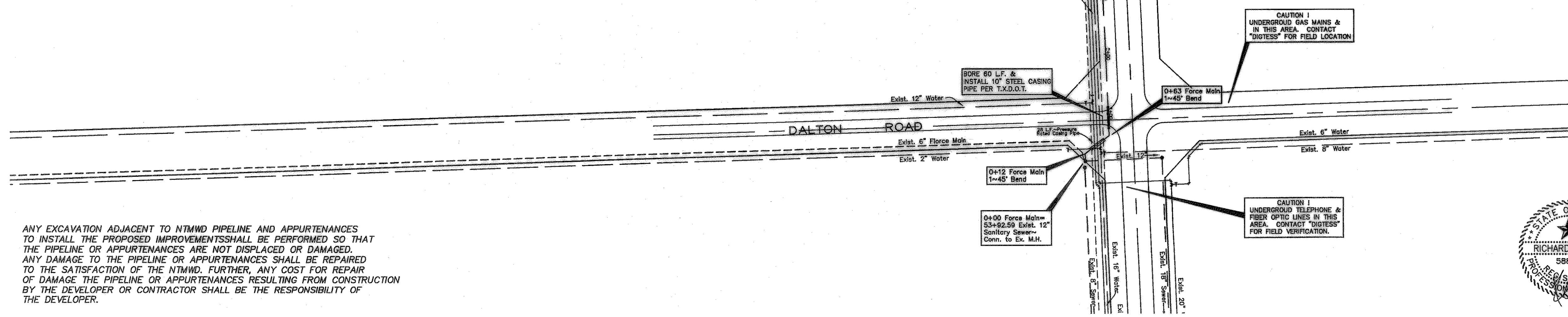
NTMWD NOTE
ALL WATER & SANITARY SEWER CROSSINGS SHALL BE IN COMPLIANCE WITH THE TEXAS COMMISSION ON ENVIRONMENTAL QUALITY RULES & REGULATIONS FOR PUBLIC WATER SYSTEMS - PARAGRAPH 290.44(c)

GENERAL NOTES

- Force Main to be constructed of AWWA C900, DR14, Class 200 PVC Pipe. PVC Force Main to be Green in color.



LIFT STATION DRAINAGE BASIN
NOT TO SCALE



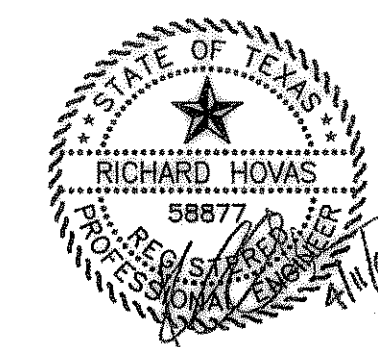
CAUTION !
UNDERGROUND GAS MAINS & IN THIS AREA. CONTACT "DIGTESS" FOR FIELD LOCATION

CAUTION !
UNDERGROUND TELEPHONE & FIBER OPTIC LINES IN THIS AREA. CONTACT "DIGTESS" FOR FIELD VERIFICATION.

AS BUILT PLANS
05/11/07

The alignment and grade were set on the ground for construction per the plans. The engineer did not verify alignment or grades after construction. We are not aware of any changes or revisions to these plans during construction except as noted.

ANY EXCAVATION ADJACENT TO NTMWD PIPELINE AND APPURTENANCES TO INSTALL THE PROPOSED IMPROVEMENTS SHALL BE PERFORMED SO THAT THE PIPELINE OR APPURTENANCES ARE NOT DISPLACED OR DAMAGED. ANY DAMAGE TO THE PIPELINE OR APPURTENANCES SHALL BE REPAIRED TO THE SATISFACTION OF THE NTMWD. FURTHER, ANY COST FOR REPAIR OF DAMAGE TO THE PIPELINE OR APPURTENANCES RESULTING FROM CONSTRUCTION BY THE DEVELOPER OR CONTRACTOR SHALL BE THE RESPONSIBILITY OF THE DEVELOPER.



FORCE MAIN PLAN						
CASTLE RIDGE ESTATES PHASE 1						
CITY OF ROCKWALL, TEXAS						
TIPTON ENGINEERING, INC.						
ENGINEERING • SURVEYING • PLANNING						
6330 Broadway Blvd. • Suite C • Garland, Texas 75043 • (972) 228-2867						
DESIGN	DRAWN	DATE	SCALE	NOTES	FILE	NO.
TE, Inc.	TE, Inc.	1-06	1"=100' H.	TE, Inc.	4802	17A