

GENERAL NOTES

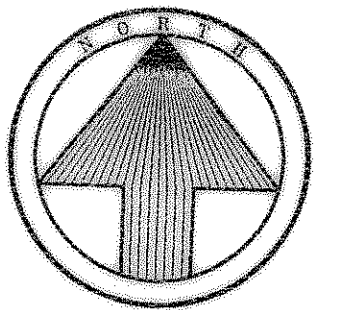
- Force Main to be constructed of AWWA C900, DR14, Class 200 PVC Pipe.
PVC Force Main to be Green in color.

CAUTION!!!!
NTMWD UNDERGROUND FACILITIES
IN THIS AREA. CONTRACTOR TO
CONTACT NTMWD AT 972-442-5405
PRIOR TO ANY CONSTRUCTION
IN THIS AREA.

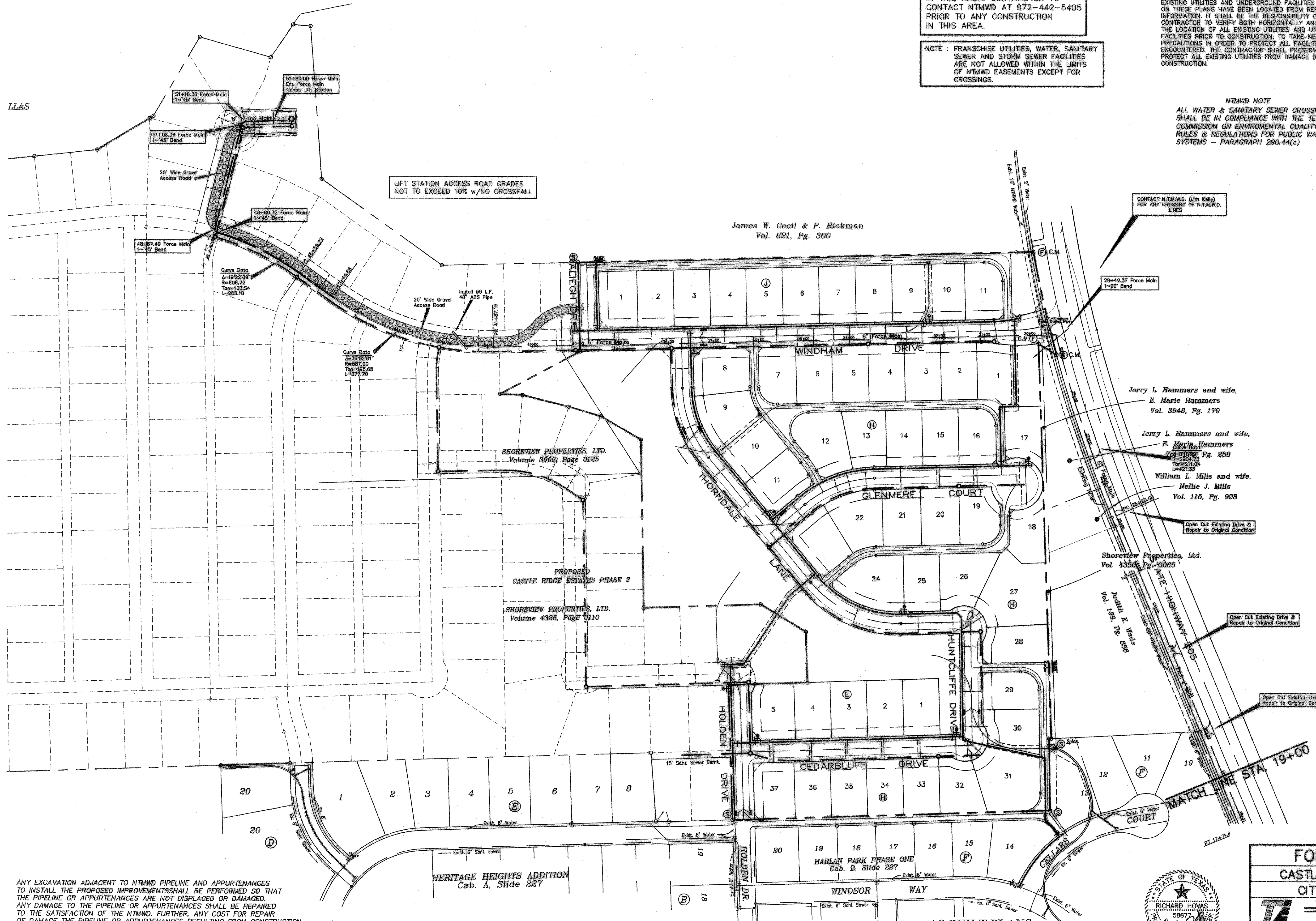
NOTE : FRANCHISE UTILITIES, WATER, SANITARY
SEWER AND STORM SEWER FACILITIES
ARE NOT ALLOWED WITHIN THE LIMITS
OF NTMWD EASEMENTS EXCEPT FOR
CROSSINGS.

CAUTION !!!
EXISTING UTILITIES

EXISTING UTILITIES AND UNDERGROUND FACILITIES INDICATED
ON THESE PLANS HAVE BEEN LOCATED FROM REFERENCE
INFORMATION. IT SHALL BE THE RESPONSIBILITY OF THE
CONTRACTOR TO VERIFY BOTH HORIZONTALLY AND VERTICALLY
THE LOCATION OF ALL EXISTING UTILITIES AND UNDERGROUND
FACILITIES PRIOR TO CONSTRUCTION, TO TAKE NECESSARY
PRECAUTIONS IN ORDER TO PROTECT ALL FACILITIES
ENCOUNTERED. THE CONTRACTOR SHALL PRESERVE AND
PROTECT ALL EXISTING UTILITIES FROM DAMAGE DURING
CONSTRUCTION.



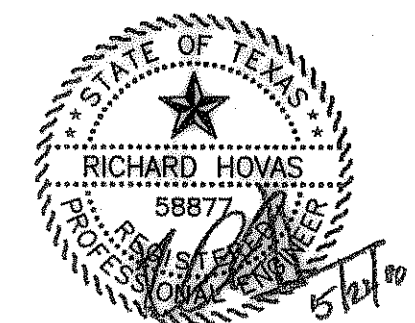
NTMWD NOTE
ALL WATER & SANITARY SEWER CROSSINGS
SHALL BE IN COMPLIANCE WITH THE TEXAS
COMMISSION ON ENVIRONMENTAL QUALITY
RULES & REGULATIONS FOR PUBLIC WATER
SYSTEMS - PARAGRAPH 290.44(c)



ANY EXCAVATION ADJACENT TO NTMWD PIPELINE AND APPURTENANCES
TO INSTALL THE PROPOSED IMPROVEMENTS SHALL BE PERFORMED SO THAT
THE PIPELINE OR APPURTENANCES ARE NOT DISPLACED OR DAMAGED.
ANY DAMAGE TO THE PIPELINE OR APPURTENANCES SHALL BE REPAIRED
TO THE SATISFACTION OF THE NTMWD. FURTHER, ANY COST FOR REPAIR
OF DAMAGE TO THE PIPELINE OR APPURTENANCES RESULTING FROM CONSTRUCTION
BY THE DEVELOPER OR CONTRACTOR SHALL BE THE RESPONSIBILITY OF
THE DEVELOPER.

The alignment and grade were set on the ground for construction per the plans. The engineer did
not verify alignment or grades after construction. We are not aware of any changes or revisions
to these plans during construction except as noted.

| FORCE MAIN PLAN | | | | | | |
|--|----------|------|------------|----------|------|-----|
| CASTLE RIDGE ESTATES PHASE 1 | | | | | | |
| CITY OF ROCKWALL, TEXAS | | | | | | |
| TIPTON ENGINEERING, INC. ENGINEERING • SURVEYING • PLANNING 6330 Broadway Blvd. • Suite C • Garland, Texas 75043 • (972) 226-2967 | | | | | | |
| DESIGN | DRAWN | DATE | SCALE | NOTES | FILE | NO. |
| TE, Inc. | TE, Inc. | 1-08 | 1"=100' H. | TE, Inc. | 4802 | 17 |



AS BUILT PLANS
05/11/07