

CAUTION!!!!
NTMWD UNDERGROUND FACILITIES IN THIS AREA. CONTRACTOR TO CONTACT NTMWD AT 972-442-5405 PRIOR TO ANY CONSTRUCTION IN THIS AREA.

NOTE : FRANCHISE UTILITIES, WATER, SANITARY SEWER AND STORM SEWER FACILITIES ARE NOT ALLOWED WITHIN THE LIMITS OF NTMWD EASEMENTS EXCEPT FOR CROSSINGS.

CITY OF DALLAS

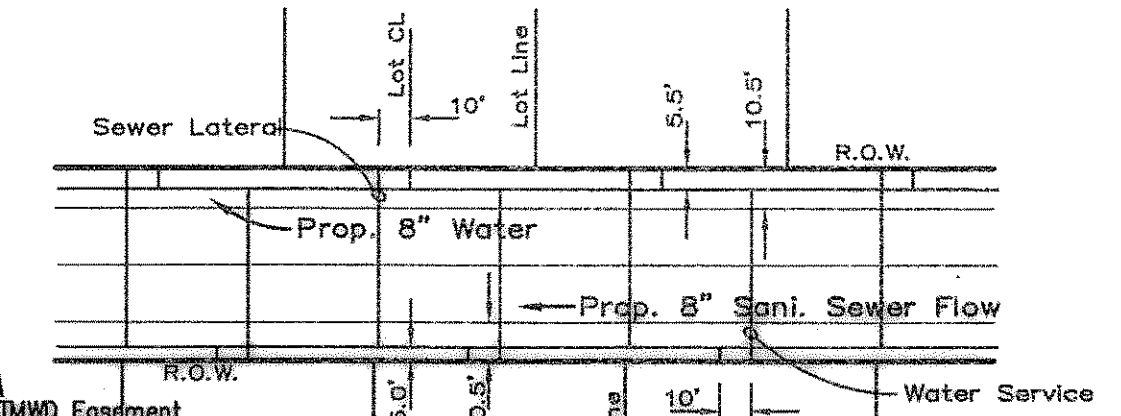
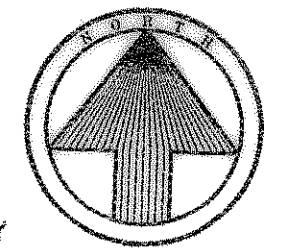
GENERAL NOTES

- All water lines shall be PVC Class 200 DR 14. C-905 pipe for water lines larger than 12".
- All water lines to have 42" minimum cover below approved street grades as required to clear other utilities.
- All water services to be 1" polyethylene 200 PSI SDR located in the center of lot with cut-offs 3'-8" behind curb.
- All sanitary sewer laterals shall be 4" and located 10' downstream of water service, unless otherwise shown on plans.
- All water mains shall pass a four (4) hour 200 psi pressure test in accordance with the City of Rockwall Specifications. Test to be made by the Contractor. The Contractor shall record the location of all water and sewer services relative to lot corners. He shall also record any additions, deletions, or revisions to the plans which take place in the field. This information is to be furnished to the Engineer immediately after installation for the purpose of preparing "as-built" plans.
- Meter boxes will be supplied & installed by the Contractor. (NEED SPECIAL LID)
- The Contractor shall be responsible for coordinating line and grade for all water, sanitary sewer, and storm sewer and appurtenances. The Engineer shall furnish this information upon request.
- Plastic tape for utility to be attached to the end of all water and sewer service lines, and extended above ground level. The tape shall meet the following specifications. The contractor shall provide an EMS pad on water and sewer as per City of Rockwall Standards.
 - Allen Marking Tape or equal
 - Tape marked continuously "Caution - Water Line" or "Caution - Sewer Line"
 - Six (6) inches in width
 - Red tape for sewer services
 - Blue tape for water services
- All existing underground facilities, such as existing water lines, sanitary sewer lines, gas lines, storm sewer lines, telephone conduits, electrical conduits, etc., that might conflict with our proposed underground facilities must be uncovered and the location verified with the Contractor prior to any underground construction for this project. The Engineer shall assist the Contractor in determining locations and elevations of these existing underground facilities. Blue EMS disks shall be placed on every water line at change of direction, valve, service, and every 250 feet on continuous line.
- Green EMS disks shall be on every sanitary sewer line at every manhole, service, and cleanout.
- All Manholes in paving shall be sealed.
- All Manholes through undeveloped areas need to be 1 foot above existing ground.

James W. Cecil & P. Hickman
Vol. 621, Pg. 300

CAUTION !!!
EXISTING UTILITIES

EXISTING UTILITIES AND UNDERGROUND FACILITIES INDICATED ON THESE PLANS HAVE BEEN LOCATED FROM REFERENCE INFORMATION. IT SHALL BE THE RESPONSIBILITY OF THE CONTRACTOR TO VERIFY BOTH HORIZONTALLY AND VERTICALLY THE LOCATION OF ALL EXISTING UTILITIES AND UNDERGROUND FACILITIES PRIOR TO CONSTRUCTION, TO TAKE NECESSARY PRECAUTIONS IN ORDER TO PROTECT ALL FACILITIES ENCOUNTERED. THE CONTRACTOR SHALL PRESERVE AND PROTECT ALL EXISTING UTILITIES FROM DAMAGE DURING CONSTRUCTION.



Typical Lot Service Detail

NOTE : 2" IRRIGATION METERS TO HAVE BACK FLOW DEVICE w/DOUBLE CHECK VALVE

Henry and Misty Phillips
Vol. 4568, Pg. 0036

Henry and Misty Phillips
Vol. 4568, Pg. 0036

Neille J. Mills
Vol. 4333, Pg. 306

Shoreview Properties, Ltd.
Vol. 4380, Pg. 0085

George R. Weatherford
Vol. 4280, Pg. 295

Remove Existing Plug & Conn. to Existing 8" Water

CURVE	RADIUS	DELTA	TANGENT	LENGTH	CHORD	BEARING
C2	597.00'	36°52'01"	198.98'	384.14'	377.55'	S73°00'02"E
C3	603.00'	19°07'34"	101.59'	201.29'	200.36'	N64°07'48"W
C4	272.00'	38°18'00"	94.45'	181.82'	178.45'	S20°35'02"E
C5	272.00'	51°42'00"	131.78'	245.44'	237.19'	S65°35'02"E
C6	228.00'	38°18'00"	79.17'	152.41'	149.59'	S69°24'58"W
C7	250.00'	22°39'15"	50.08'	98.85'	98.20'	S80°28'23"E
C8	230.00'	14°00'24"	28.25'	56.23'	56.09'	S05°56'42"W
C9	230.00'	34°23'40"	71.18'	138.07'	136.09'	N73°51'40"W

NTMWD NOTE
ANY EXCAVATION ADJACENT TO NTMWD PIPELINE AND APPURTENANCES TO INSTALL THE PROPOSED IMPROVEMENTS SHALL BE PERFORMED SO THAT THE PIPELINE OR APPURTENANCES ARE NOT DISPLACED OR DAMAGED. ANY DAMAGE TO THE PIPELINE OR APPURTENANCES SHALL BE REPAIRED TO THE SATISFACTION OF THE NTMWD. FURTHER, ANY COST FOR REPAIR OF DAMAGE TO THE PIPELINE OR APPURTENANCES RESULTING FROM CONSTRUCTION BY THE DEVELOPER OR CONTRACTOR SHALL BE THE RESPONSIBILITY OF THE DEVELOPER.

NTMWD NOTE
ALL WATER & SANITARY SEWER CROSSINGS SHALL BE IN COMPLIANCE WITH THE TEXAS COMMISSION ON ENVIRONMENTAL QUALITY RULES & REGULATIONS FOR PUBLIC WATER SYSTEMS - PARAGRAPH 290.44(c)

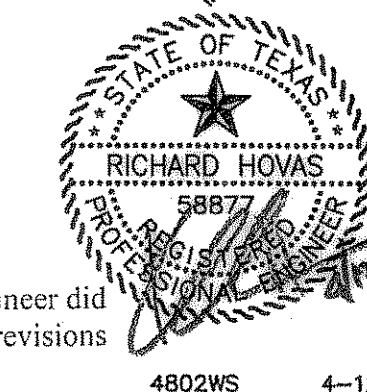
6" TxDot Grade 3, Type B Flex Base
6" Compacted Subgrade To 95% Standard Proctor Density (12" Beyond Flex Base)

Typical Lift Station Road

NOTE : LOWER WATER LINES 2" BELOW SANITARY SEWER LINES OR CONCRETE ENCASE

AS BUILT PLANS
05/11/07

The alignment and grade were set on the ground for construction per the plans. The engineer did not verify alignment or grades after construction. We are not aware of any changes or revisions to these plans during construction except as noted.



WATER & SANITARY SEWER PLAN						
CASTLE RIDGE ESTATES PHASE 1						
CITY OF ROCKWALL						
TIPTON ENGINEERING, INC.						
ENGINEERING • SURVEYING • PLANNING						
6330 Broadway Blvd. • Suite C • Garland, Texas 75043 • (972) 226-2967						
DESIGN	DRAWN	DATE	SCALE	NOTES	FILE	NO.
TE, Inc.	TE, Inc.	XXX	1"=100' H.	TE, Inc.	4802	14