

4" 3000 psi Concrete

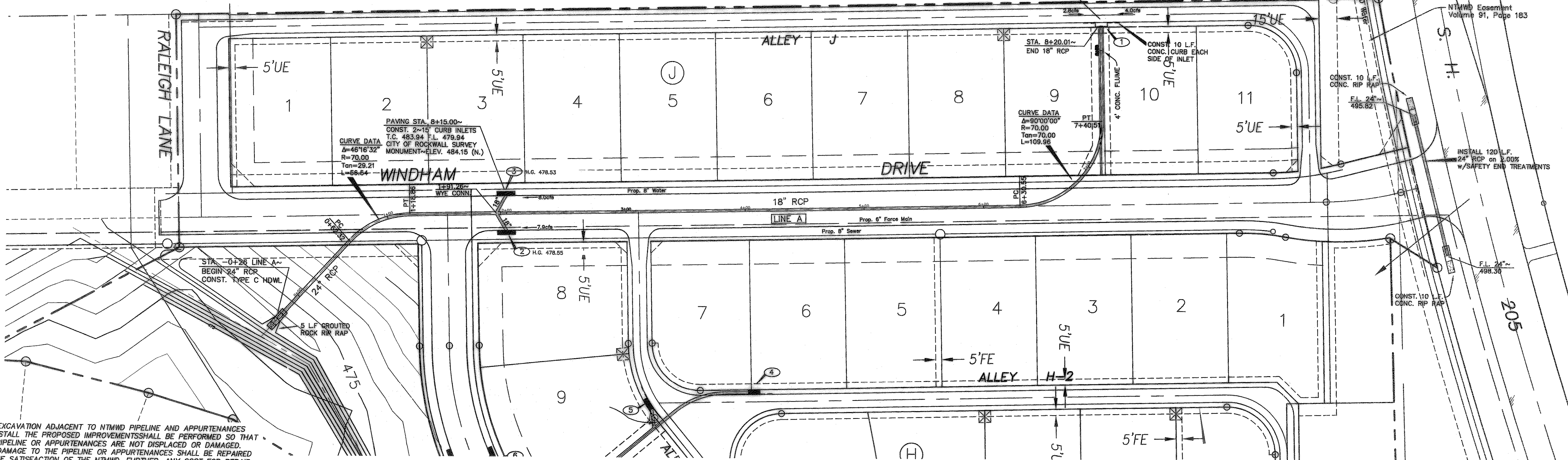
Overflow Flume Detail

nts

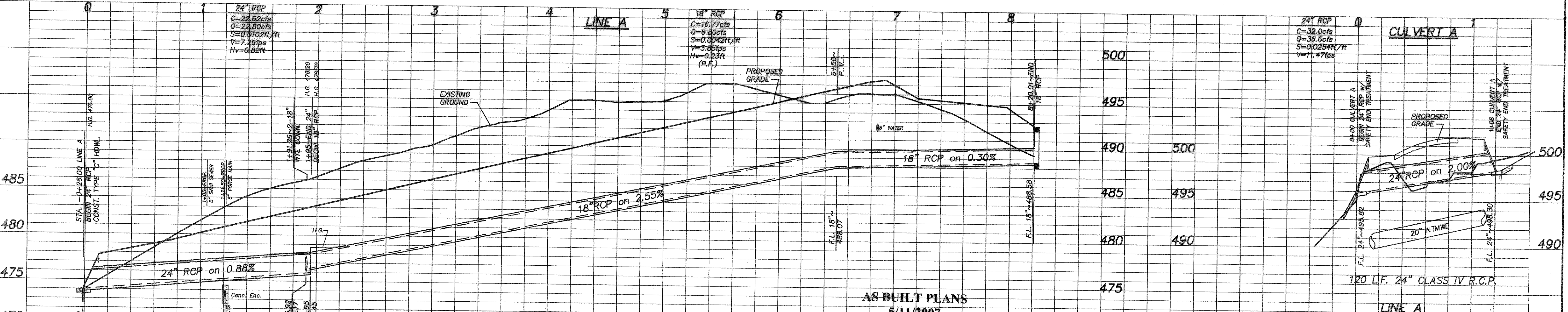
CAUTION!!!!!!
NTMWD UNDERGROUND FACILITIES
IN THIS AREA. CONTRACTOR TO
CONTACT NTMWD AT 972-442-5405
PRIOR TO ANY CONSTRUCTION
IN THIS AREA.

NOTE: FRANCHISE UTILITIES, WATER, SANITARY
SEWER AND STORM SEWER FACILITIES
ARE NOT ALLOWED WITHIN THE LIMITS
OF NTMWD EASEMENTS EXCEPT FOR
CROSSINGS.

W/#3 Bars on 24" Ctrs.



ANY EXCAVATION ADJACENT TO NTMWD PIPELINE AND APPURTENANCES
TO INSTALL THE PROPOSED IMPROVEMENTS SHALL BE PERFORMED SO THAT
THE PIPELINE OR APPURTENANCES ARE NOT DISPLACED OR DAMAGED.
ANY DAMAGE TO THE PIPELINE OR APPURTENANCES SHALL BE REPAIRED
TO THE SATISFACTION OF THE NTMWD. FURTHER, ANY COST FOR REPAIR
OF DAMAGE TO THE PIPELINE OR APPURTENANCES RESULTING FROM CONSTRUCTION
BY THE DEVELOPER OR CONTRACTOR SHALL BE THE RESPONSIBILITY OF
THE DEVELOPER.

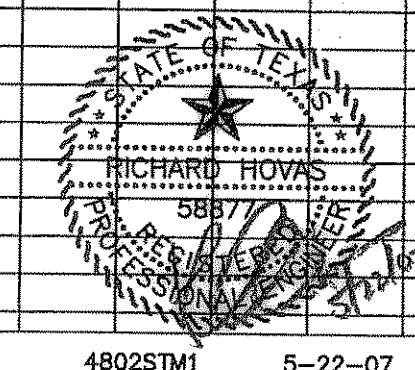


AS BUILT PLANS 5/11/2007

The alignment and grade were set on the ground for construction per the plans. The engineer did not verify alignment or grades after construction. We are not aware of any changes or revisions to these plans during construction except as noted.

B.M. "1" CUT ON EAST TOP OF CURBAT THE END OF HOLDEN DRIVE BEING 137.1 A DISTANCE OF 27' FROM THE CENTERLINE INTERSECTION OF HOLDEN DRIVE AND HUNT LANE. ELEVATION 508.49
B.M. "2" CUT IN THE NORTH SIDE OF ALLEY IN THE MIDDLE OF LOT 17 OF HARLAN PARK PHASE 1. ELEVATION 472.02

ALL STORM SEWER TO BE R.C.P.



STORM SEWER PLAN
CASTLE RIDGE ESTATES PHASE 1
CITY OF ROCKWALL, TEXAS

TIPTON ENGINEERING, INC.
ENGINEERING • SURVEYING • PLANNING
6330 Broadway Blvd. • Suite C • Garland, Texas 75043 • (972) 226-2967

DESIGN	DRAWN	DATE	SCALE	NOTES	FILE	NO.
TE, Inc.	TE, Inc.	10-13-05	1"=40' H. 1"=5' V.	TE, Inc.	4802	10