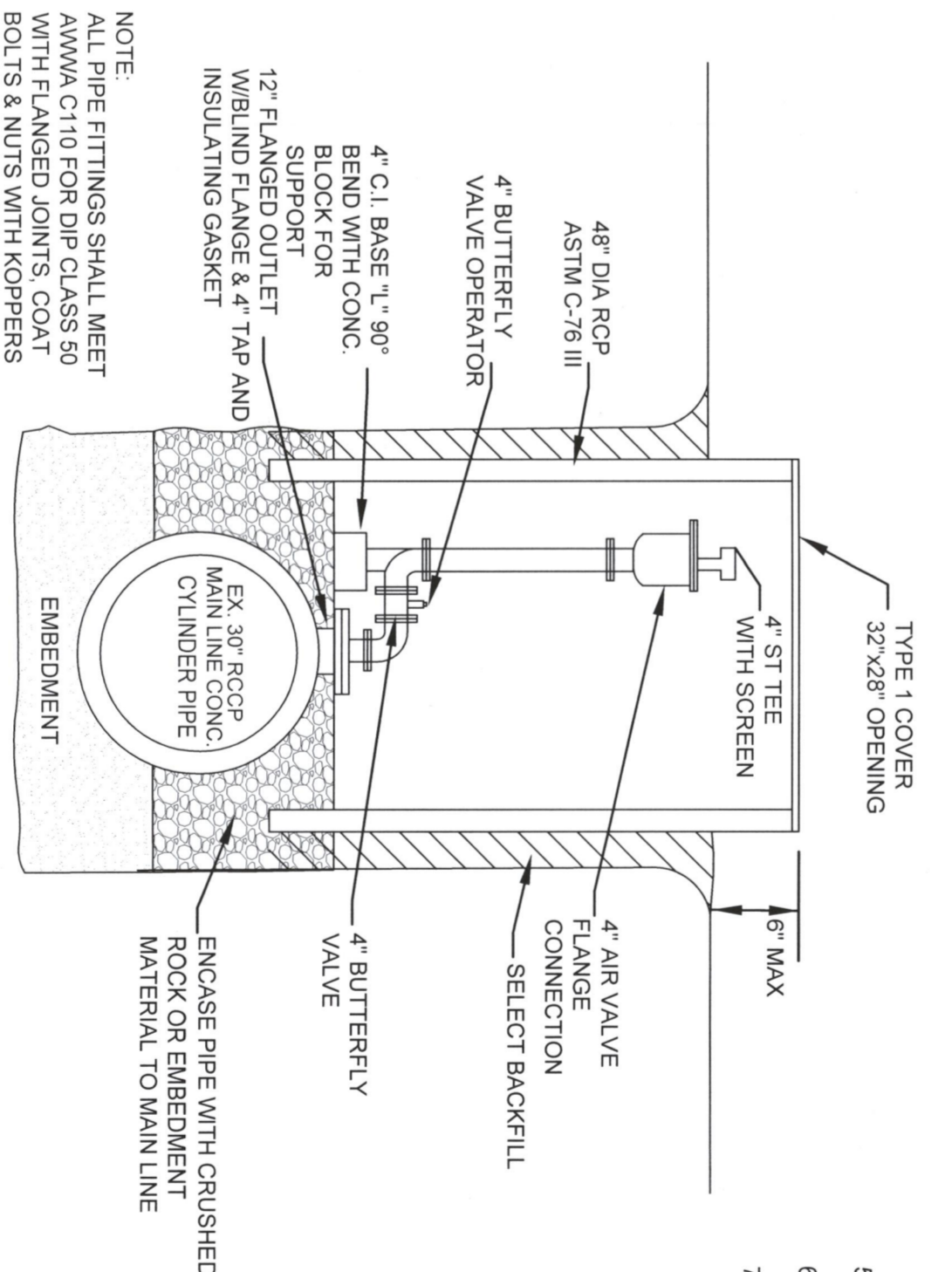


**PROPOSED PROFILE AIR & VACUUM RELEASE VALVE**  
NOT TO SCALE

GENERAL NOTES:

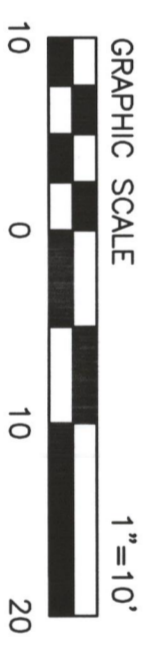
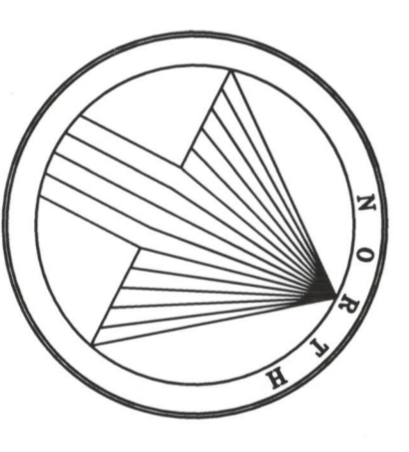
1. FOR BAR WRAPPED CONCRETE PIPE ALL EXPOSED BURIED METAL SURFACES, FLANGES, OUTLETS, CONNECTIONS, ETC. SHALL RECEIVE A MINIMUM OF 1" THICK MORTAR COATING. THE CEMENT MORTAR SHALL CONSIST OF ONE PART PORTLAND CEMENT TO TWO AND ONE HALF PARTS OF FINE, SHARP (PLASTER) SAND. WHERE NECESSARY, OR AS DIRECTED BY THE ENGINEER, COATING SANDS SHOULD BE REINFORCED WITH WIRE MESH. THE SAND SHOULD BE REINFORCED WITH WIRE MESH THROUGH THE ENTIRE LENGTH OF THE COATING.
2. ALL METAL SURFACES INSIDE OF MANHOLES SHALL RECEIVE A MINIMUM OF TWO (2) COATS OF BITUMASTIC COATING (KOPPEERS 50 OR APPROVED EQUAL). CARE SHALL BE TAKEN TO APPLY THE COATING IN ACCORDANCE WITH THE MANUFACTURER'S RECOMMENDATIONS.
3. ALL FLANGE BOLTS IN THE PROJECT SHALL BE STAINLESS STEEL AND COVERED WITH ANTI-SIZE COMPOUND.
4. THE VALVE EXTENSION SHALL BE POSITIONED INSIDE THE MANHOLE THROUGH THE MANHOLE TOP. THE VALVE EXTENSION SHALL EXTEND TO WITHIN 4" OF THE MANHOLE TOP. CORE HOLE THROUGH MANHOLE TOP AND PROVIDE COVER FOR OPENING.
5. ALL AIR VALVE PIPING SHALL BE CLASS 53 DUCTILE IRON PIPE WITH FLANGED JOINT.
6. 2" EXPANSION JOINT FILLER SHALL BE FACTORY PRIMED AND PENETRATIONS.
7. ABOVE GROUND AIR VALVE PIPING SHALL BE FACTORY PRIMED AND PAINTED SILVER.



**EXISTING AIR & VACUUM RELEASE VALVE**  
NOT TO SCALE

- NOTE:
1. REMOVE AND SALVAGE EXISTING BLOCK SUPPORT, MANHOLE RISER PIPE, LID AND COVER.
  2. RELOCATE OUTSIDE PROPOSED PAVEMENT TO GRASS AREA WITHIN THE NTMWD EASEMENT OUTSIDE OF THE CITY OF ROCKWALL, RIGHT-OF-WAY. SEE PLAN.
  3. REMOVE EX. 90° BEND AND RISER PIPE. SEE PROPOSED PROFILE FOR NEW CONFIGURATION.

**CONTRACTOR TO CONTACT NORTH TEXAS MUNICIPAL WATER DISTRICT (NTMWD) LINE LOCATES AT 972-442-5405 72 HOURS PRIOR TO WORKING ON NTMWD FACILITIES.**



3

25

24

**BENCHMARKS**

1. X-crisped in CL of Alley East of Morningstar Drive within the third lot north of Midnight Pass. Elevation = 513.26
2. PK Nail in CL of Caruth Lane & Alley Intersection 150 feet +/- east of Morningstar Drive. Elevation = 491.69

NO.	REVISIONS DURING CONSTRUCTION	BY	DATE	NO.	DATE



**JBI PARTNERS**  
Texas Registered Engineering Firm F-438  
16301 Quorum Drive  
Suite 200 B  
Austin, Texas 78701  
Address: 2633676  
Fax: 872-248-1414  
www.jbipartners.com

SUPPLEMENTAL INSTRUCTIONS		PROJECT NO.
NTMWD AIR RELEASE VALVE VAULT RELOCATION		HOE132C
Caruth Lakes Phase 7C		SHEET NO.
City of Rockwall, Texas		SI-01

ALL RESPONSIBILITY FOR ADEQUACY OF DESIGN REMAINS WITH THE DESIGN ENGINEER. THE CITY OF ROCKWALL, IN REVIEWING AND RELEASING PLANS FOR CONSTRUCTION, DOES NOT ASSUME LIABILITY FOR ADEQUACY OR ACCURACY OF DESIGN.

*FINAC  
10/16/14*