

CONSTRUCTION PLANS FOR CARUTH LAKES

PHASE 7C - LOTS 1-12 BLOCK F, LOTS 15-27 BLOCK W, LOTS 6-11 BLOCK V

CITY OF ROCKWALL ROCKWALL COUNTY, TEXAS

A. NORTH TEXAS MUNICIPAL WATER DISTRICT (NTMWD) 30-INCH WATER TRANSMISSION PIPELINE IS LOCATED WITHIN LIMITS OF CONSTRUCTION.

B. OPERATION OF HEAVY EARTHMOVING EQUIPMENT, COMPACTION EQUIPMENT OR HEAVY CONSTRUCTION EQUIPMENT, SUCH AS CONCRETE TRUCKS, SHALL BE RESTRICTED TO SPECIFIC CROSSING POINTS ACROSS NTMWD EASEMENTS, AS APPROVED BY THE NTMWD. THE CROSSINGS SHALL BE DESIGNATED AND VERIFIED TO PROVIDE A MINIMUM OF FIVE-FEET OF COVER.

C. TO ASSURE THAT PLACING OF SIGNIFICANT LOADS OVER THE NTMWD PIPELINE DOES NOT DAMAGE THE EXISTING PIPELINE, NO MATERIALS SHALL BE STOCKPILED ON THE NTMWD EASEMENT, WITHOUT AUTHORIZATION FROM THE NTMWD. IF THE CONTRACTOR DESIRES TO USE THE NTMWD'S EASEMENT FOR STOCKPILE OF MATERIALS, CONTACT NTMWD ENGINEERING AT (972) 442-5405 SO YOUR PLANS FOR USE OF NTMWD'S EASEMENT CAN BE REVIEWED.

D. A MINIMUM OF THREE FEET SEPARATION BETWEEN THE BOTTOM OF THE PAVEMENT AND TOP OF NTMWD PIPELINE IS REQUIRED. IN ADDITION, IF SEPARATION BETWEEN THE BOTTOM OF THE PAVEMENT AND THE TOP OF THE PIPELINE IS LESS THAN 3.5 FEET, A THICKENED PAVEMENT SECTION IS REQUIRED.

E. CROSSING OF THE NTMWD EASEMENT WITH OTHER UTILITIES, SUCH AS TV CABLE, PHONE, GAS AND ELECTRIC, SHALL BE COORDINATED WITH THE NTMWD TO AVOID DAMAGE TO THE NTMWD FACILITIES.

F. OUTDOOR LIGHTING, LANDSCAPING, SCREENING WALLS OR OTHER FACILITIES SHALL NOT BE INSTALLED IN NTMWD EASEMENTS WITHOUT WRITTEN APPROVAL OF THE NTMWD.

G. UNLESS OTHERWISE SHOWN OR REQUIRED A MINIMUM OF ONE-FOOT CLEARANCE SHALL BE PROVIDED FOR ALL UTILITIES CROSSING THE NTMWD PIPELINES.

H. *THE CONTRACTOR SHALL CONTACT NTMWD ENGINEERING AT (972) 442-5405 AT LEAST 48 HOURS PRIOR TO PERFORMING ANY WORK IN THE VICINITY OF THE NTMWD FACILITIES.*

ALL CONTRACTORS TO USE STANDARD DETAILS PER CITY OF ROCKWALL AND NCTCOG THIRD EDITION.

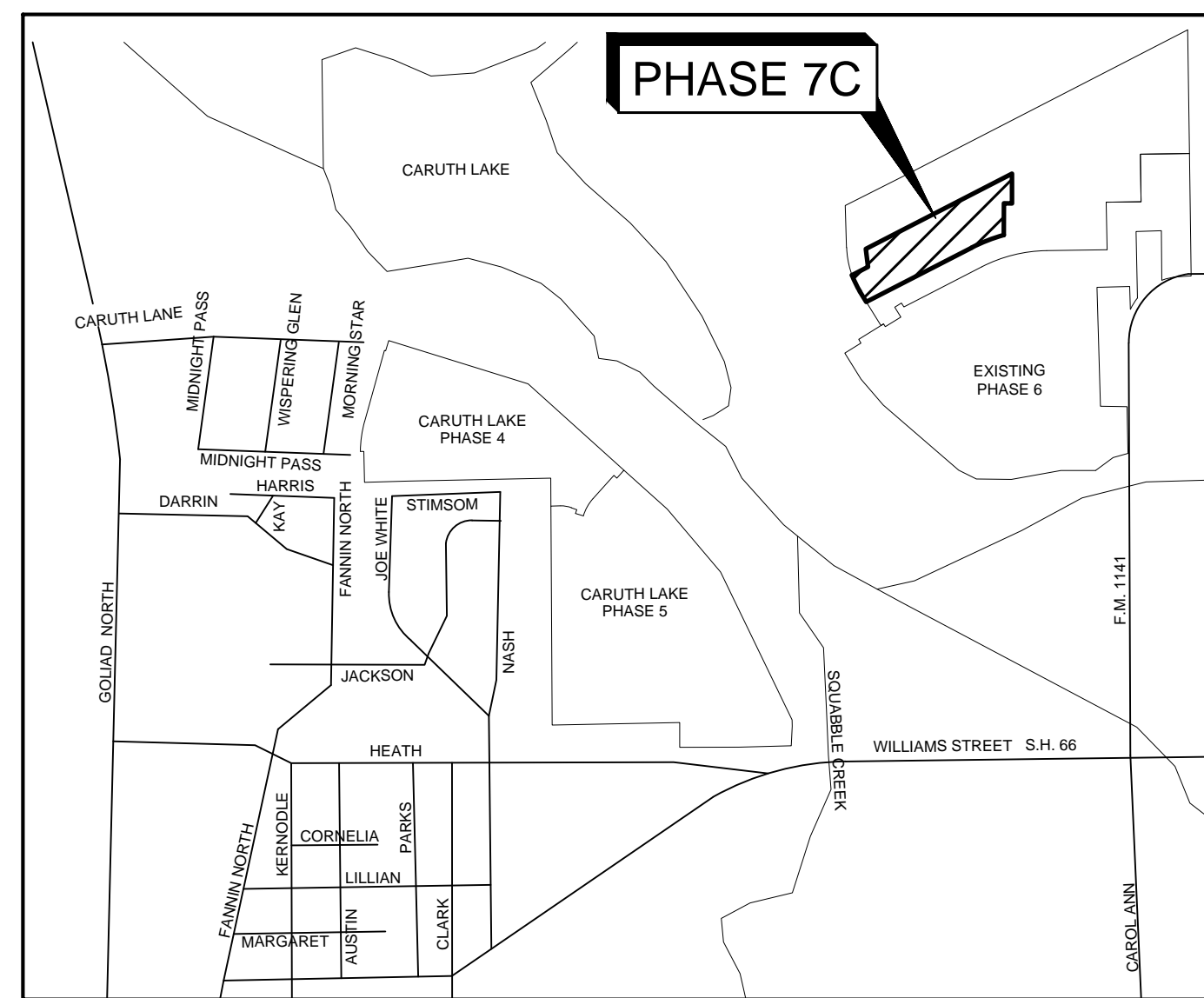
Note:
To Contractor(s) The contractor(s) is (are) to provide "red lined" mark-ups of these plans to the engineer for any field changes made during construction after the project is complete. These mark-ups will be used to prepare "Construction Record Drawings".

OWNER \ DEVELOPER
D.R. HORTON - TEXAS, LTD.
4306 MILLER ROAD, SUITE A
ROWLETT, TEXAS 75088
(214) 607-4244

ENGINEER - SURVEYOR - LANDSCAPE ARCHITECT



16301 Quorum Drive
Suite 200 B
Addison, Texas 75240
Main 972.248.7676
Fax 972.248.1414
www.jbipartners.com
TEXAS REGISTERED ENGINEERING FIRM F-438



LOCATION MAP
MAPSCO PAGE 20C-D
ROCKWALL, TEXAS
N.T.S

INDEX

SHEET NO.	DESCRIPTION
1	COVER
2-3	FINAL PLAT
4	PAVING PLAN WHITE WATER LANE
5	PAVING PLAN HAMPTON BAY DRIVE
6	PAVING PLAN ALLEY 10
7	PAVING PLAN ALLEY 6 & ALLEY 14
8	GRADING PLAN
9	DRAINAGE AREA MAP
10	DRAINAGE CALCULATIONS
11	STORM PLAN LINE 15
12	STORM PLAN LINES 13, 14, & 16
13	STORM PROFILE LINE 15
14	STORM PROFILE LINES 13 & 14
15	STORM PROFILE LINE 16 STA: 0+00 - 12+00
16	STORM LATERAL PROFILES
17	WATER & SANITARY SEWER PLAN
18	SANITARY SEWER PROFILE LINE H
19	EROSION CONTROL PLAN
20	EROSION CONTROL DETAILS
21	SIGNAGE & LIGHTING PLAN
SI-01	SUPPLEMENTAL INSTRUCTIONS NTMWD AIR RELEASE VALVE RELOCATION

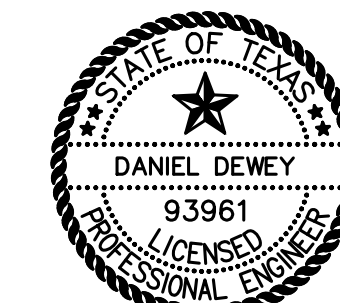
NOTE:
THE CONSTRUCTION OF CARUTH LAKES PHASE 7C HAS TO OCCUR PRIOR TO OR CONCURRENT WITH CARUTH LAKES PHASE 7D.

ALL RESPONSIBILITY FOR ADEQUACY OF DESIGN REMAINS WITH THE DESIGN ENGINEER. THE CITY OF ROCKWALL, IN REVIEWING AND RELEASING PLANS FOR CONSTRUCTION, ASSUMES NO RESPONSIBILITY FOR ADEQUACY OR ACCURACY OF DESIGN.

AS-BUILT DRAWING
TO THE BEST OF JBI PARTNERS, INC. KNOWLEDGE HEREBY STATES THIS PLAN IS AS-BUILT. THE INFORMATION PROVIDED IS BASED ON CONSTRUCTION STAKING AND PAD VERIFICATION AT THE SITE AND INFORMATION PROVIDED BY THE CONTRACTOR.

[Signature]
NAME

04-13-2015
DATE



The seal appearing on this document was authorized by DANIEL DEWEY, P.E. 93961. Alteration of a sealed document without proper notification to the responsible engineer is an offense under the Texas Engineering Practice Act.

JBI PROJECT # HOE132C

CARUTH LAKES PHASE 7C

JBI PARTNERS