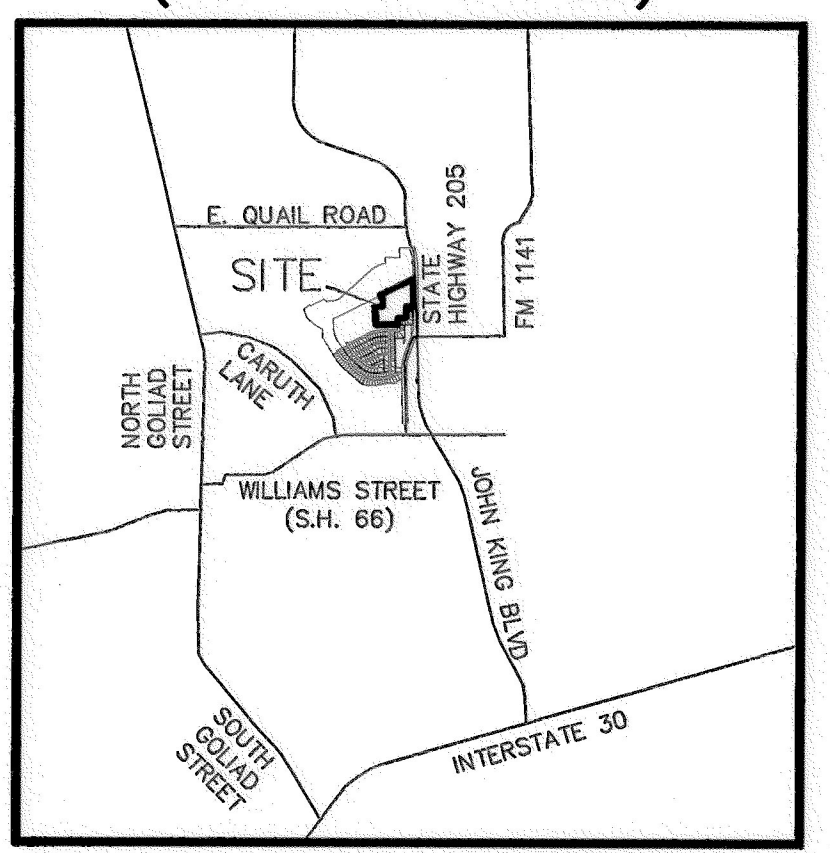


**CARUTH LAKES PHASE 7B LOT SUMMARY**

8400 SQ. FT. LOTS 9  
 8399-7000 SQ. FT. LOTS 57  
 Total Lot Count 66

BLOCK/LOT	SQUARE FEET	ACRES
F-13	8,039	0.185
F-14	8,039	0.185
F-15	8,237	0.189
F-16	7,820	0.180
F-17	7,820	0.180
F-18	7,820	0.180
F-19	7,820	0.180
F-20	8,204	0.188
H-1	8,728	0.200
H-2	8,125	0.187
H-3	7,590	0.174
H-4	7,590	0.174
H-5	7,590	0.174
H-6	7,590	0.174
H-7	7,590	0.174
H-8	7,590	0.174
H-9	7,590	0.174
H-10	7,590	0.174
H-11	8,165	0.187
H-12	8,165	0.187
H-13	7,360	0.169
H-14	7,360	0.169
H-15	7,360	0.169
H-16	7,360	0.169
H-17	7,360	0.169
H-18	7,360	0.169
H-19	7,360	0.169
H-20	7,360	0.169
H-21	7,736	0.178
H-22	8,818	0.202
K-5	12,464	0.286
K-6	7,227	0.166
K-7	7,411	0.170
K-8	7,411	0.170
K-9	8,165	0.187
L-1	8,165	0.187
L-2	7,130	0.164
L-3	7,130	0.164
L-4	7,130	0.164
L-5	7,100	0.163
L-6	12,000	0.275
L-7	9,625	0.221
L-8	7,026	0.161
L-9	7,065	0.162
L-10	7,130	0.164
L-11	7,130	0.164
L-12	7,130	0.164
L-13	7,130	0.164
L-14	8,165	0.187
M-1	9,311	0.214
M-2	9,082	0.208
M-3	7,817	0.179
M-4	7,817	0.179
M-5	7,817	0.179
M-6	7,817	0.179
M-7	7,817	0.179
M-8	8,024	0.184
M-9	12,670	0.291
M-10	11,553	0.265
M-11	7,333	0.168
M-12	7,478	0.172
M-13	7,478	0.172
M-14	7,478	0.172
M-15	7,478	0.172
M-16	7,938	0.182
M-17	8,168	0.188

**LOCATION MAP (NOT TO SCALE)**

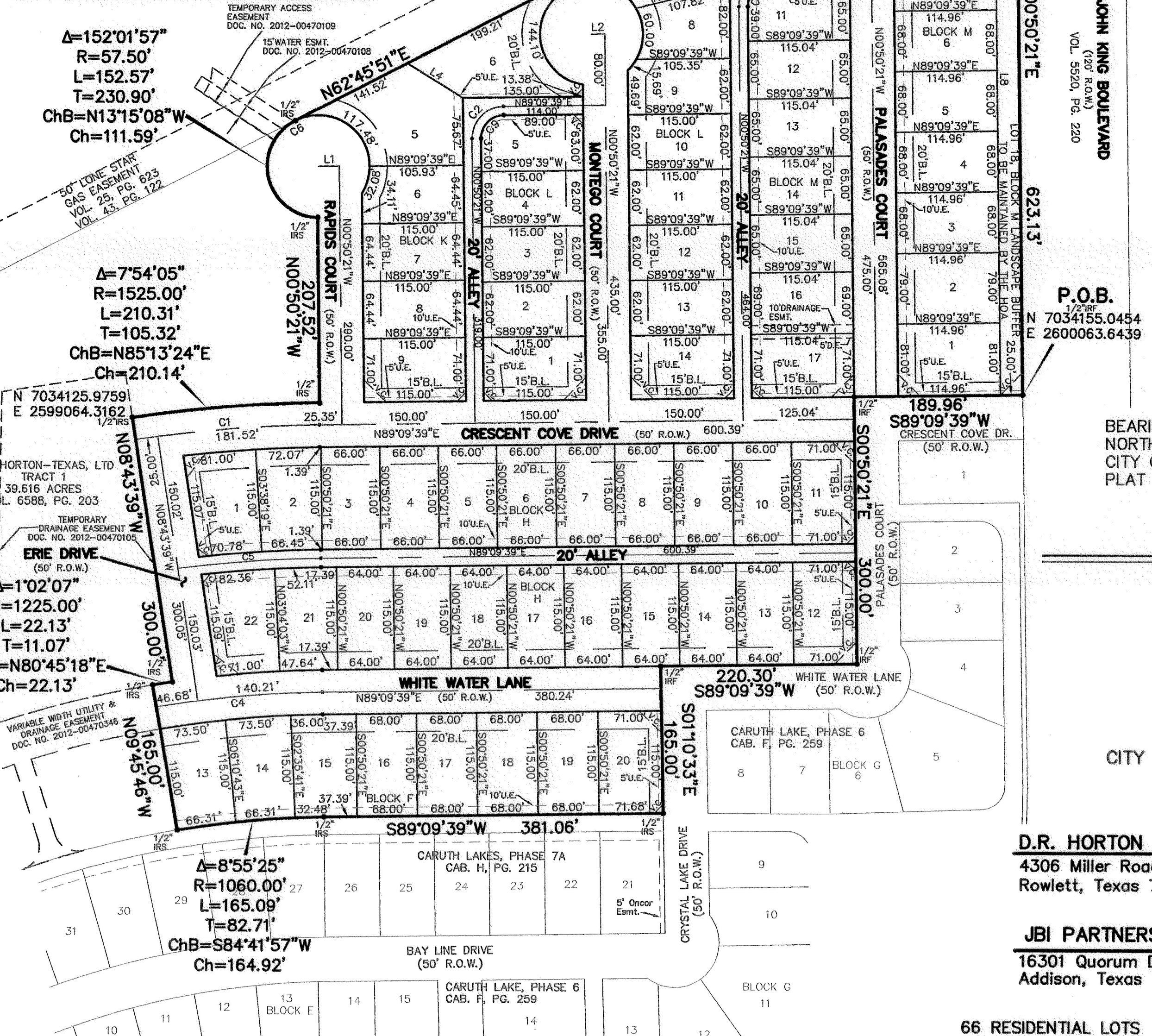


**CURVE TABLE**

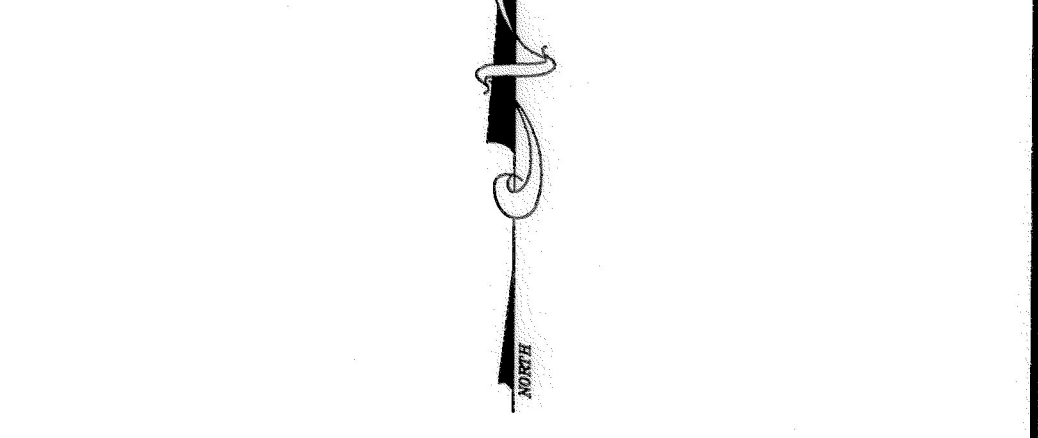
NO.	DELTA	RADIUS	LENGTH	TANGENT	CHORD BEARING	CHORD
C1	7°53'18"	1500.00'	208.52'	103.42'	S 85°13'00" W	208.35'
C2	90°00'00"	36.00'	56.55'	36.00'	S 44°09'39" W	50.91'
C3	90°00'00"	36.00'	56.55'	36.00'	S 44°09'39" W	50.91'
C4	8°55'25"	1200.00'	186.89'	93.64'	S 84°41'57" W	186.70'
C5	6°49'38"	1350.00'	160.86'	80.53'	S 85°44'50" W	160.77'
C6	301°03'40"	57.50'	302.13'	32.49'	S 61°15'44" W	56.58'
C7	305°54'19"	57.50'	302.00'	29.36'	S 72°07'44" W	52.29'
C8	305°51'39"	57.50'	306.95'	29.39'	S 72°09'04" W	52.33'
C9	92°04'15"	26.03'	41.83'	26.99'	S 45°13'29" W	37.47'
C10	90°00'00"	26.00'	40.84'	26.00'	S 44°09'39" W	36.77'

**LINE TABLE**

LINE	BEARING	DISTANCE
L1	S89°09'39"W	23.42'
L2	S89°09'39"W	15.00'
L3	S89°09'39"W	15.00'
L4	S58°29'21"E	73.65'
L5	N27°14'09"W	7.22'
L6	N27°14'09"W	1.76'
L7	S27°14'09"E	66.45'
L8	N00°50'21"W	708.09'



FILED FOR RECORD  
 ROCKWALL COUNTY CLERK  
 12 JUL 31 PM 2:55  
 SHELLI FULLER  
 ROCKWALL COUNTY CLERK  
 BY \_\_\_\_\_ DEPUTY



- LEGEND**
- IR IRON ROD FOUND
  - IRS IRON ROD SET
  - R.O.W. RIGHT-OF-WAY
  - P.O.B. POINT OF BEGINNING
  - B.L. BUILDING LINE
  - D.E. DRAINAGE EASEMENT
  - V.C. 10' X 10' VISIBILITY CLIP AT ALLEY INTERSECTION
  - V.C. 25' X 25' VISIBILITY CLIP AT STREET INTERSECTION
  - U.E. UTILITY EASEMENT

BEARINGS ARE BASED ON MONUMENTS FOUND ALONG THE NORTH LINE OF CARUTH LAKE, PHASE 6 AN ADDITION TO THE CITY OF ROCKWALL, AS RECORDED IN CABINET F, PAGE 259, PLAT RECORDS OF ROCKWALL COUNTY.

**FINAL PLAT  
 CARUTH LAKES, PHASE 7B**

17.182 ACRES OUT OF THE  
 SAMUEL S. MCCURRY SURVEY,  
 ABSTRACT NO. 146  
 66 RESIDENTIAL LOTS  
 CITY OF ROCKWALL, ROCKWALL COUNTY, TEXAS

**D.R. HORTON - TEXAS, LTD. OWNER**  
 4306 Miller Road, Suite A (214) 607-4244  
 Rowlett, Texas 75088

**JB PARTNERS, INC. SURVEYOR/ENGINEER**  
 16301 Quorum Drive, Suite 200 B (972)248-7676  
 Addison, Texas 75001

Plotted by: mmp Plot Date: 7/9/2012 9:09 AM Drawing: H:\Projects\HOE132\dwg\plats\XHOE132PT-PHASE7B.dwg Saved By: mmp Save Time: 7/9/2012 8:47 AM