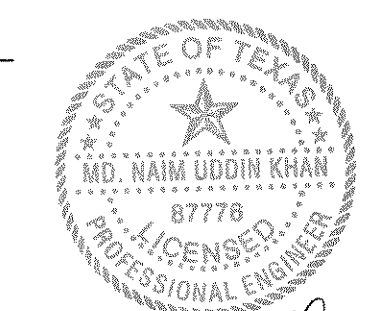


NOTE:
OUTFALL STRUCTURE BE STAKED IN THE
FIELD, THEN HAVE CITY ENGINEER
APPROVED LOCATION.



APPROVED

REVISION

DATE

NO.

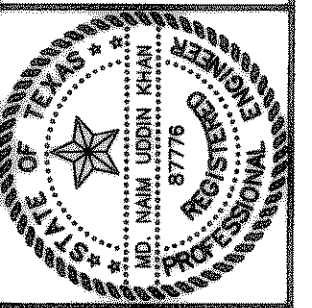
DATE

NO.

DATE

NO.

Winkelmann & Associates, Inc.
CONSULTING CIVIL ENGINEERS & SURVEYORS
5405 VALLEY PARK ROAD
DALLAS, TEXAS 75240
(972) 492-7888 FAX
(972) 492-7889



THESE CONSTRUCTION PLANS WERE PREPARED UNDER THE RESPONSIBLE SUPERVISION OF M.D. NAIM UDDIN KHAN, REGISTERED PROFESSIONAL ENGINEER NO. 87778

M.B. JONES SURVEY, ABSTRACT NO. 122
CITY OF ROCKWALL
ROCKWALL COUNTY, TEXAS
LUMBERMEN'S INVESTMENT CORPORATION
5495 BELLEVUE ROAD #225
DALLAS, TEXAS 75240

THE SEAL APPEARING ON THIS DOCUMENT WAS AUTHORIZED BY M.D. NAIM UDDIN KHAN, # 87778

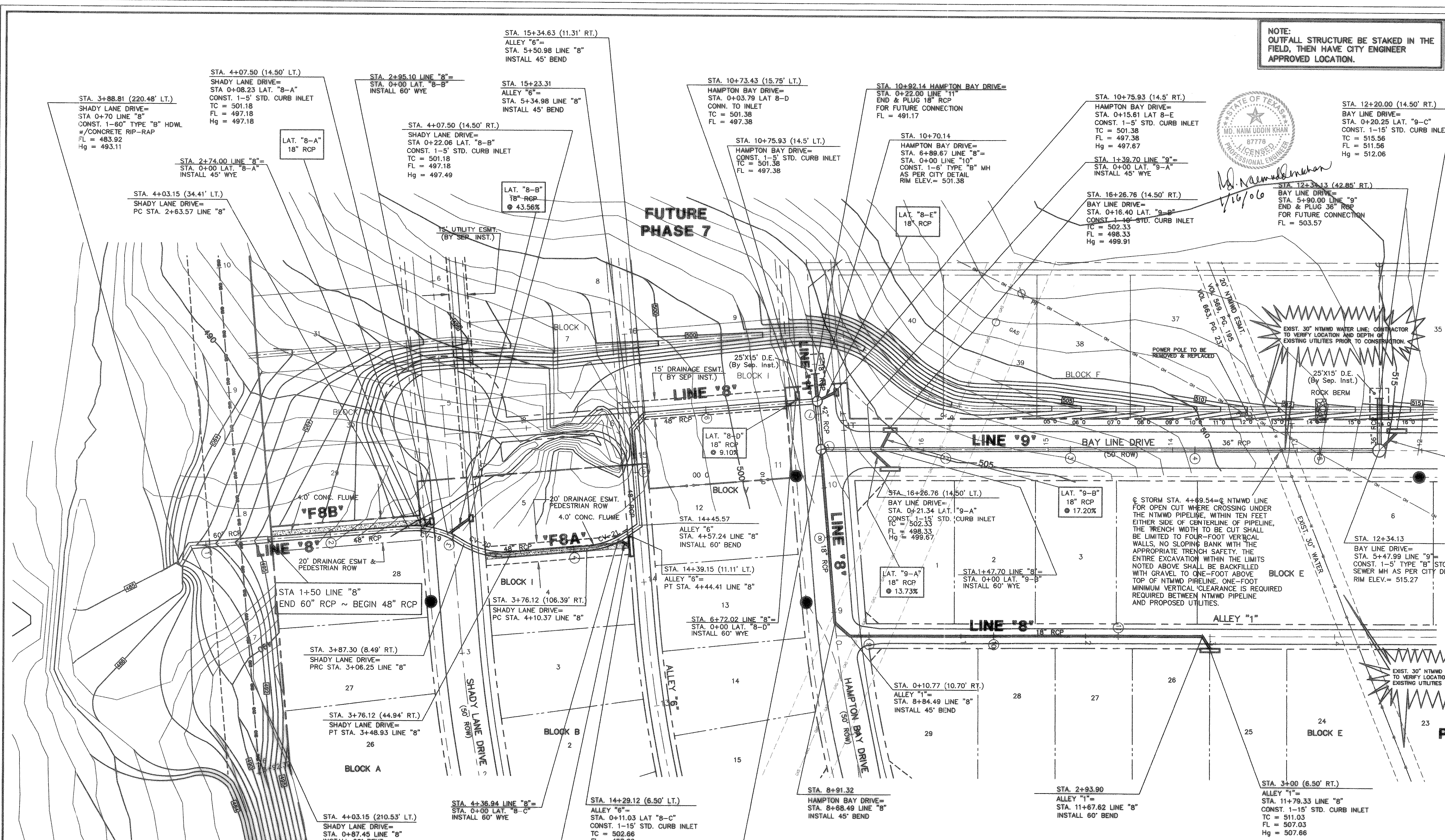
STORM SEWER PLAN (PHASE 6B)

Date: 4/12/04
Designed By: MS
Drawn By: MS
Checked By: MK
File: 146546.DWG
Project No.: 14654.01

SHEET
26
OF
57

BENCHMARK:
"X" CHISEL IN C OF ALLEY EAST OF MORNINGSTAR DRIVE WITHIN 3RD LOT NORTH OF MIDNIGHT PASS. ELEV. 513.26

BENCHMARK:
PK NAIL IN C OF CARUTH LANE & ALLEY INTERSECTION 150'± EAST OF MORNINGSTAR DRIVE. ELEV. 491.68



FUTURE PHASE 7

PHASE 6B

NTMWD NOTES-2

- A. NORTH TEXAS MUNICIPAL WATER DISTRICT (NTMWD) 30-INCH WATER TRANSMISSION PIPELINE IS LOCATED WITHIN LIMITS OF CONSTRUCTION.
- B. OPERATION OF HEAVY EARTHMOVING EQUIPMENT, COMPACTION EQUIPMENT OR HEAVY CONSTRUCTION EQUIPMENT, SUCH AS CONCRETE TRUCKS, SHALL BE RESTRICTED TO SPECIFIC CROSSING POINTS ACROSS NTMWD EASEMENTS, AS APPROVED BY THE NTMWD. THE CROSSINGS SHALL BE DESIGNATED AND VERIFIED TO PROVIDE A MINIMUM OF FIVE-FOOT OF COVER.
- C. TO ASSURE THAT PLACING OF SIGNIFICANT LOADS OVER THE NTMWD PIPELINE DOES NOT DAMAGE THE EXISTING PIPELINE, NO MATERIALS SHALL BE STOCKPILED ON THE NTMWD EASEMENT, WITHOUT AUTHORIZATION FROM THE NTMWD. IF THE CONTRACTOR DESIRES TO USE THE NTMWD'S EASEMENT FOR STOCKPILE OF MATERIALS, CONTACT NTMWD ENGINEERING AT (972) 442-5405 SO YOUR PLANS FOR USE OF NTMWD'S EASEMENT CAN BE REVIEWED.
- D. A MINIMUM OF THREE FEET SEPARATION BETWEEN THE BOTTOM OF THE PAVEMENT AND TOP OF NTMWD PIPELINE IS REQUIRED. IN ADDITION, IF SEPARATION BETWEEN THE BOTTOM OF THE PAVEMENT AND THE TOP OF THE PIPELINE IS LESS THAN 3.5 FEET, A THICKENED PAVEMENT SECTION IS REQUIRED.
- E. CROSSING OF THE NTMWD EASEMENT WITH OTHER UTILITIES, SUCH AS TV CABLE, PHONE, GAS AND ELECTRIC, SHALL BE COORDINATED WITH THE NTMWD TO AVOID DAMAGE TO THE NTMWD FACILITIES.
- F. OUTDOOR LIGHTING, LANDSCAPING, SCREENING WALLS OR OTHER FACILITIES SHALL NOT BE INSTALLED IN NTMWD EASEMENTS WITHOUT WRITTEN APPROVAL OF THE NTMWD.
- G. UNLESS OTHERWISE SHOWN OR REQUIRED A MINIMUM OF ONE-FOOT CLEARANCE SHALL BE PROVIDED FOR ALL UTILITIES CROSSING THE NTMWD PIPELINES.
- H. "THE CONTRACTOR SHALL CONTACT NTMWD ENGINEERING AT (972) 442-5405 AT LEAST 48 HOURS PRIOR TO PERFORMING ANY WORK IN THE VICINITY OF THE NTMWD FACILITIES."

LEGEND

- 730 EXIST. CONTOURS
- 724 PROP. CONTOURS
- S.S. SANITARY SEWER
- Q 100 100-YR FLOW
- TC TOP OF CURB
- FL FLOW LINE
- 89°0' EXIST. SPOT ELEVATION
- FLOW ARROW
- DRAINAGE BOUNDARY

STORM SEWER CURVE TABLE

CURVE	RADIUS	DELTA	TANGENT	LENGTH	CHORD	BEARING
C-19	65.00'	37°37'18"	22.14'	42.68'	41.92'	N77°00'50"E
C-20	65.00'	37°37'18"	22.14'	42.68'	41.92'	N77°00'50"E
C-21	65.00'	30°00'00"	17.42'	34.03'	33.65'	N43°12'11"E

NTMWD NOTE-1
FRANCHISED UTILITIES ARE NOT PERMITTED IN NTMWD EASEMENT EXCEPT FOR CROSSINGS.

NTMWD NOTE-3

EXCAVATION ADJACENT TO NTMWD PIPELINE AND APPURTENANCES TO INSTALL THE PROPOSED IMPROVEMENTS SHALL BE PERFORMED SO THAT THE PIPELINE OR APPURTENANCES ARE NOT DISPLACED OR DAMAGED. ANY DAMAGE TO THE PIPELINE OR APPURTENANCES SHALL BE REPAIRED TO THE SATISFACTION OF THE NTMWD. FURTHER, ANY COST FOR REPAIR OF DAMAGE TO THE PIPELINE OR APPURTENANCES RESULTING FROM CONSTRUCTION BY THE DEVELOPER OR CONTRACTOR WILL BE THE RESPONSIBILITY OF THE DEVELOPER.