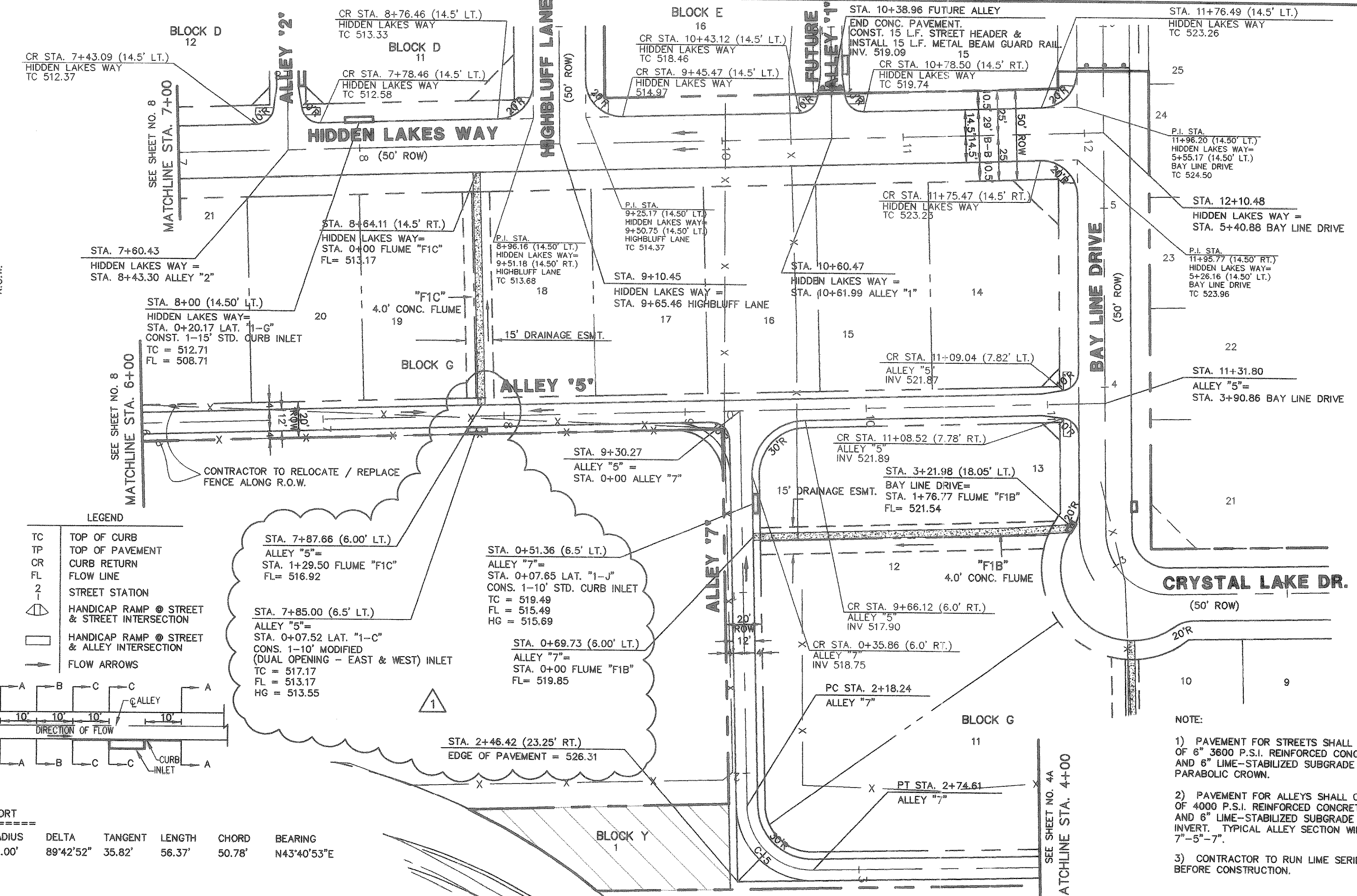


TYPICAL ALLEY WARPING AT INLET  
N.T.S.

**CURVE REPORT**

CURVE	RADIUS	DELTA	TANGENT	LENGTH	CHORD	BEARING
C-5	36.00'	89°42'52"	35.82'	56.37'	50.78'	N43°40'53"E



**"NTMWD NOTES"**

A. NORTH TEXAS MUNICIPAL WATER DISTRICT (NTMWD) 30-INCH WATER TRANSMISSION PIPELINE IS LOCATED WITHIN LIMITS OF CONSTRUCTION.

B. OPERATION OF HEAVY EARTHMOVING EQUIPMENT, COMPACTION EQUIPMENT OR HEAVY CONSTRUCTION EQUIPMENT, SUCH AS CONCRETE TRUCKS, SHALL BE RESTRICTED TO SPECIFIC CROSSING POINTS ACROSS NTMWD EASEMENTS, AS APPROVED BY THE NTMWD. THE CROSSINGS SHALL BE DESIGNATED AND VERIFIED TO PROVIDE A MINIMUM OF FIVE-FEET OF COVER.

C. TO ASSURE THAT PLACING OF SIGNIFICANT LOADS OVER THE NTMWD PIPELINE DOES NOT DAMAGE THE EXISTING PIPELINE, NO MATERIALS SHALL BE STOCKPILED ON THE NTMWD EASEMENT, WITHOUT AUTHORIZATION FROM THE NTMWD. IF THE CONTRACTOR DESIRES TO USE THE NTMWD'S EASEMENT FOR STOCKPILE OF MATERIALS, CONTACT NTMWD ENGINEERING AT (972) 442-5405 SO YOUR PLANS FOR USE OF NTMWD'S EASEMENT CAN BE REVIEWED.

D. A MINIMUM OF THREE FEET SEPARATION BETWEEN THE BOTTOM OF THE PAVEMENT AND TOP OF NTMWD PIPELINE IS REQUIRED. IN ADDITION, IF SEPARATION BETWEEN THE BOTTOM OF THE PAVEMENT AND THE TOP OF THE PIPELINE IS LESS THAN 3.5 FEET, A THICKENED PAVEMENT SECTION IS REQUIRED.

E. CROSSING OF THE NTMWD EASEMENT WITH OTHER UTILITIES, SUCH AS TV CABLE, PHONE, GAS AND ELECTRIC, SHALL BE COORDINATED WITH THE NTMWD TO AVOID DAMAGE TO THE NTMWD FACILITIES.

F. OUTDOOR LIGHTING, LANDSCAPING, SCREENING WALLS OR OTHER FACILITIES SHALL NOT BE INSTALLED IN NTMWD EASEMENTS WITHOUT WRITTEN APPROVAL OF THE NTMWD.

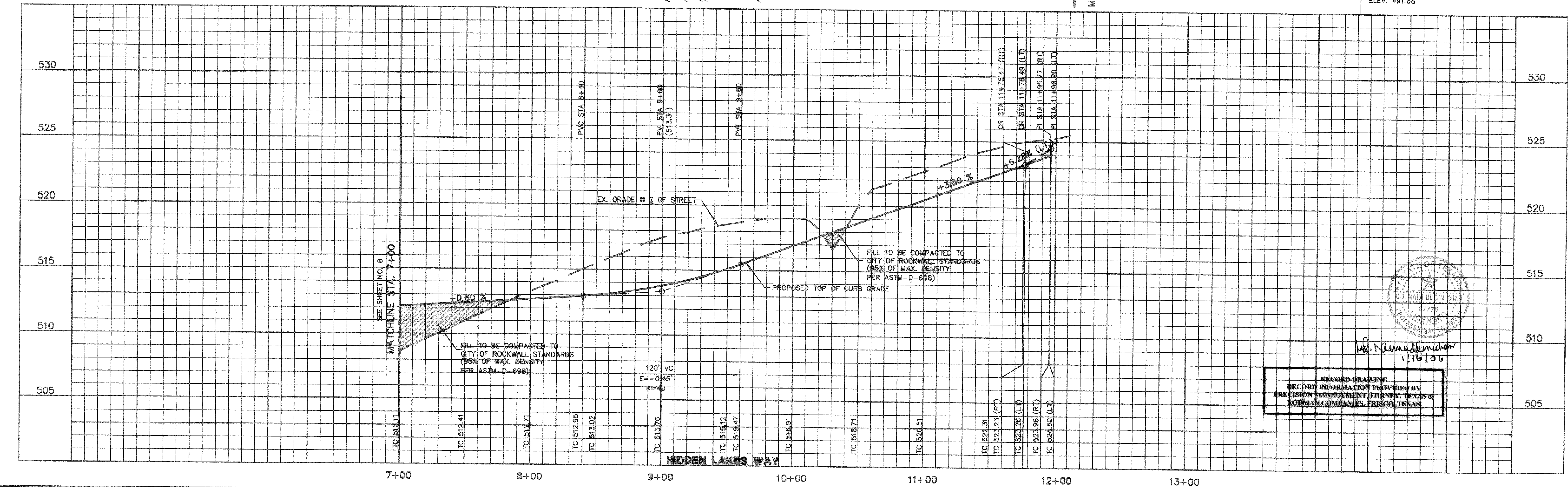
G. UNLESS OTHERWISE SHOWN OR REQUIRED A MINIMUM OF ONE-FOOT CLEARANCE SHALL BE PROVIDED FOR ALL UTILITIES CROSSING THE NTMWD PIPELINES.

H. "THE CONTRACTOR SHALL CONTACT NTMWD ENGINEERING AT (972) 442-5405 AT LEAST 48 HOURS PRIOR TO PERFORMING ANY WORK IN THE VICINITY OF THE NTMWD FACILITIES."

- NOTE:**
- PAVEMENT FOR STREETS SHALL CONSIST OF 6" 3600 P.S.I. REINFORCED CONCRETE AND 6" LIME-STABILIZED SUBGRADE WITH 6" PARABOLIC CROWN.
  - PAVEMENT FOR ALLEYS SHALL CONSIST OF 4000 P.S.I. REINFORCED CONCRETE AND 6" LIME-STABILIZED SUBGRADE WITH 5" INVERT. TYPICAL ALLEY SECTION WILL BE 7'-5"-7".
  - CONTRACTOR TO RUN LIME SERIES BEFORE CONSTRUCTION.

**BENCHMARK:**  
"X" CHISELED IN C OF ALLEY EAST OF MORNINGSTAR DRIVE WITHIN 3RD LOT NORTH OF MIDNIGHT PASS. ELEV. 513.26

**BENCHMARK:**  
PK NAIL IN C OF CARUTH LANE & ALLEY INTERSECTION 150'± EAST OF MORNINGSTAR DRIVE. ELEV. 491.68



RECORD DRAWING  
RECORD INFORMATION PROVIDED BY  
PRECISION MANAGEMENT, FORTNEY, TEXAS &  
RODMAN COMPANIES, FRISCO, TEXAS

NO.	DATE	REVISION	APPROVAL
1	08/30/04	REVISED ALLEY INV. & TC	NK

THESE CONSTRUCTION PLANS WERE PREPARED UNDER THE RESPONSIBLE SUPERVISION OF M.D. NAIM UDDIN KHAN, REGISTERED PROFESSIONAL ENGINEER NO. 87776

THE SEAL APPEARING ON THIS DOCUMENT WAS AUTHORIZED BY M.D. NAIM UDDIN KHAN, # 87776

M.B. JONES SURVEY, ABSTRACT NO. 122  
CITY OF ROCKWALL  
ROCKWALL COUNTY, TEXAS  
LUMBERMEN'S INVESTMENT CORPORATION  
5485 BELLINE ROAD #225  
DALLAS, TEXAS 75240

**PHASE 6A & PHASE 6B**  
Scale: 1"=40'  
Date: 12/22/03  
Designed By: RB  
Drawn By: MS  
Checked By: NK  
File: 346246mp06.dwg View:  
Project No.: 14654.01

**PHASE 6A & PHASE 6B**  
PAVING PLAN & PROFILE (PHASE 6 & PHASE 6A)  
HIDDEN LAKES WAY STA 7+00 TO 12+10.48  
PAVING PLAN ALLEY '5' STA 6+00 TO 11+31.80  
PAVING PLAN ALLEY '7' STA 0+00 TO 4+00

**57**

