

- NOTE:
- 1) PAVEMENT FOR STREETS SHALL CONSIST OF 6" 3600 P.S.I. REINFORCED CONCRETE AND 6" LIME-STABILIZED SUBGRADE WITH 6" PARABOLIC CROWN.
  - 2) PAVEMENT FOR ALLEYS SHALL CONSIST OF 4000 P.S.I. REINFORCED CONCRETE AND 6" LIME-STABILIZED SUBGRADE WITH 5" INVERT. TYPICAL ALLEY SECTION WILL BE 7"-5"-7".
  - 3) CONTRACTOR TO RUN LIME SERIES BEFORE CONSTRUCTION.

**NTMWD NOTE-2**

A. NORTH TEXAS MUNICIPAL WATER DISTRICT (NTMWD) 30-INCH WATER TRANSMISSION PIPELINE IS LOCATED WITHIN LIMITS OF CONSTRUCTION.

B. OPERATION OF HEAVY EARTHMOVING EQUIPMENT, COMPACTION EQUIPMENT OR HEAVY CONSTRUCTION EQUIPMENT, SUCH AS CONCRETE TRUCKS, SHALL BE RESTRICTED TO SPECIFIC CROSSING POINTS ACROSS NTMWD EASEMENTS, AS APPROVED BY THE NTMWD. THE CROSSINGS SHALL BE DESIGNATED AND VERIFIED TO PROVIDE A MINIMUM OF FIVE-FOOT COVER.

C. TO ASSURE THAT PLACING OF SIGNIFICANT LOADS OVER THE NTMWD PIPELINE DOES NOT DAMAGE THE EXISTING PIPELINE, NO MATERIALS SHALL BE STOCKPILED ON THE NTMWD EASEMENT, WITHOUT AUTHORIZATION FROM THE NTMWD. IF THE CONTRACTOR DESIRES TO USE THE NTMWD'S EASEMENT FOR STOCKPILE OF MATERIALS, CONTACT NTMWD ENGINEERING AT (972) 442-5405 SO YOUR PLANS FOR USE OF NTMWD'S EASEMENT CAN BE REVIEWED.

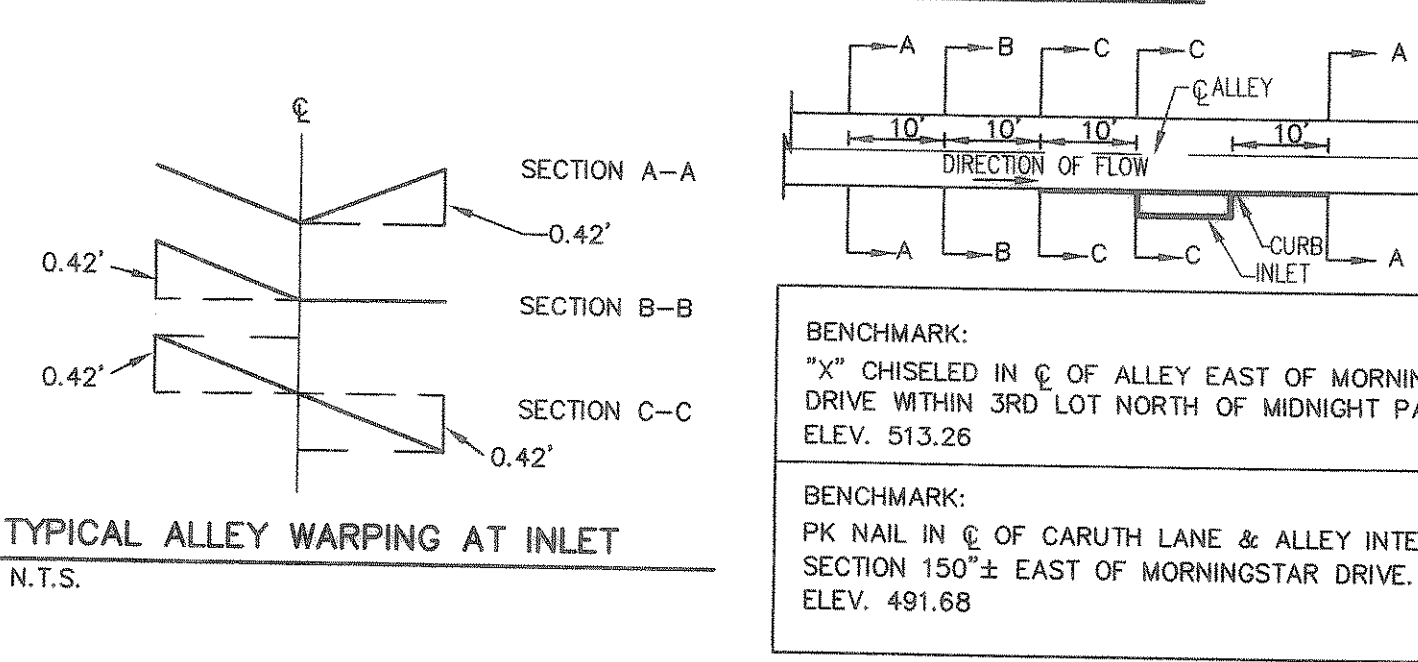
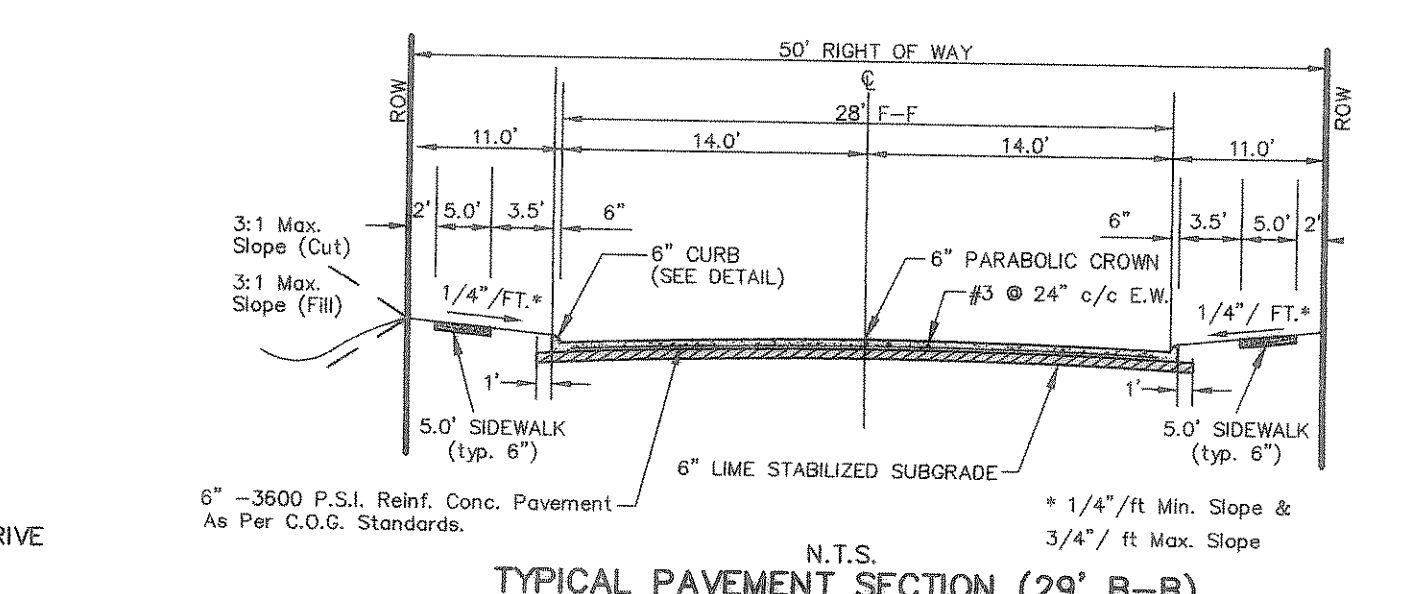
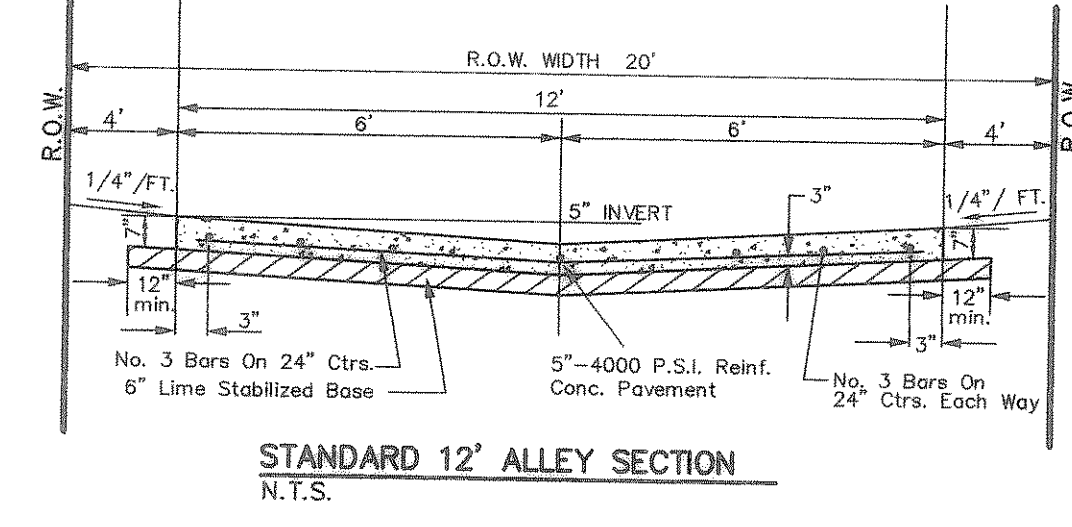
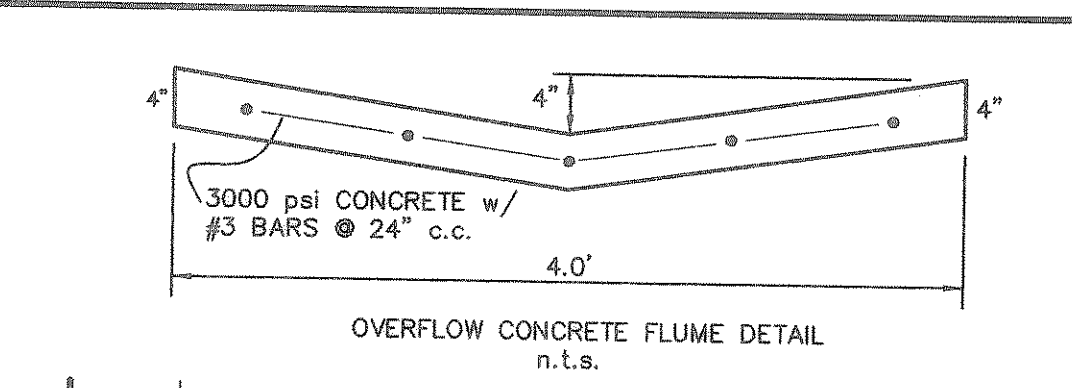
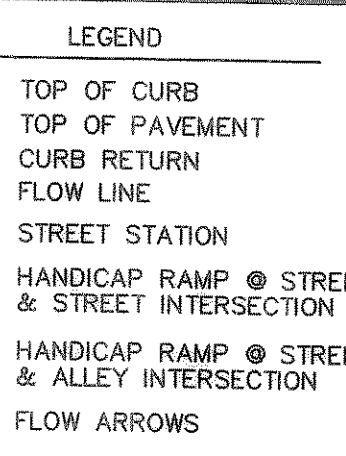
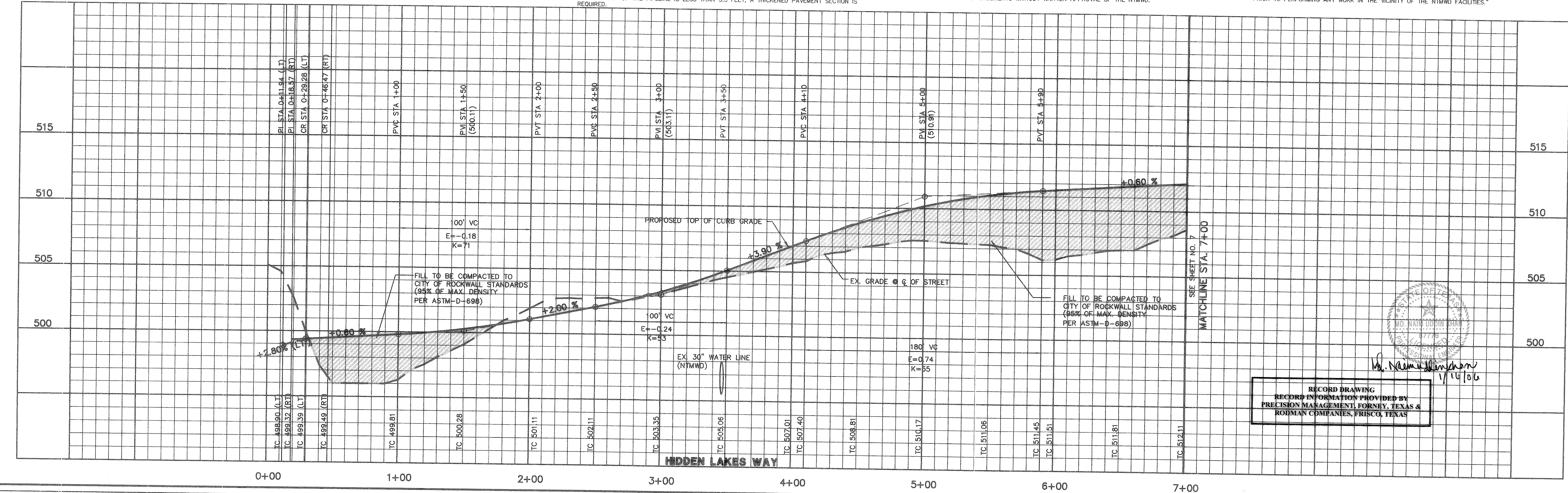
D. A MINIMUM OF THREE FEET SEPARATION BETWEEN THE BOTTOM OF THE PAVEMENT AND TOP OF NTMWD PIPELINE IS REQUIRED. IN ADDITION, IF SEPARATION BETWEEN THE BOTTOM OF THE PAVEMENT AND THE TOP OF THE PIPELINE IS LESS THAN 3.5 FEET, A THICKENED PAVEMENT SECTION IS REQUIRED.

E. CROSSING OF THE NTMWD EASEMENT WITH OTHER UTILITIES, SUCH AS TV CABLE, PHONE, GAS AND ELECTRIC, SHALL BE COORDINATED WITH THE NTMWD TO AVOID DAMAGE TO THE NTMWD FACILITIES.

F. OUTDOOR LIGHTING, LANDSCAPING, SCREENING WALLS OR OTHER FACILITIES SHALL NOT BE INSTALLED IN NTMWD EASEMENTS WITHOUT WRITTEN APPROVAL OF THE NTMWD.

G. UNLESS OTHERWISE SHOWN OR REQUIRED A MINIMUM OF ONE-FOOT CLEARANCE SHALL BE PROVIDED FOR ALL UTILITIES CROSSING THE NTMWD PIPELINES.

H. THE CONTRACTOR SHALL CONTACT NTMWD ENGINEERING AT (972) 442-5405 AT LEAST 48 HOURS PRIOR TO PERFORMING ANY WORK IN THE VICINITY OF THE NTMWD FACILITIES.



APPROVAL

REVISION

DATE

NO.

4/12/04

Winkelman & Associates, Inc.

CONSULTING CIVIL ENGINEERS & SURVEYORS

6700 HILLCREST PLAZA DRIVE, SUITE 100

DALLAS, TEXAS 75230

REGISTERED PROFESSIONAL ENGINEER

STATE OF TEXAS

NO. 0000000000

EXPIRES 08/31/07

THESE CONSTRUCTION PLANS WERE PREPARED UNDER THE RESPONSIBLE SUPERVISION OF AN ENGINEER REGISTERED PROFESSIONAL ENGINEER NO. 87776

M.D. NAIM UDDIN KHAN, # 87776

M.B. JONES SURVEY, ABSTRACT NO. 122

CITY OF ROCKWALL

ROCKWALL COUNTY, TEXAS

LUMBERMAN'S INVESTMENT CORPORATION

5495 BELTLINE ROAD #225

DALLAS, TEXAS 75240

THE SEAL APPEARING ON THIS DOCUMENT WAS AUTHORIZED BY

M.D. NAIM UDDIN KHAN, # 87776

**PAVING PLAN & PROFILE PHASE 6A**

**HIDDEN LAKES WAY STA 0+00 TO 7+00**

**PAVING PLAN ALLEY '6' STA 0+00 TO 6+00**

**PAVING PLAN ALLEY '4' STA 0+00 TO 4+74.65**

RECORD DRAWING

PRECISION MANAGEMENT, FORTNEY, TEXAS & ROIDMAN COMPANIES, FRISCO, TEXAS

PHASE 6A

Scale: 1"=40'

Date: 3/24/04

Designed By: RB

Drawn By: MS

Checked By: NK

File: J46546mp05.dwg View:

Project No.: 14654.01