

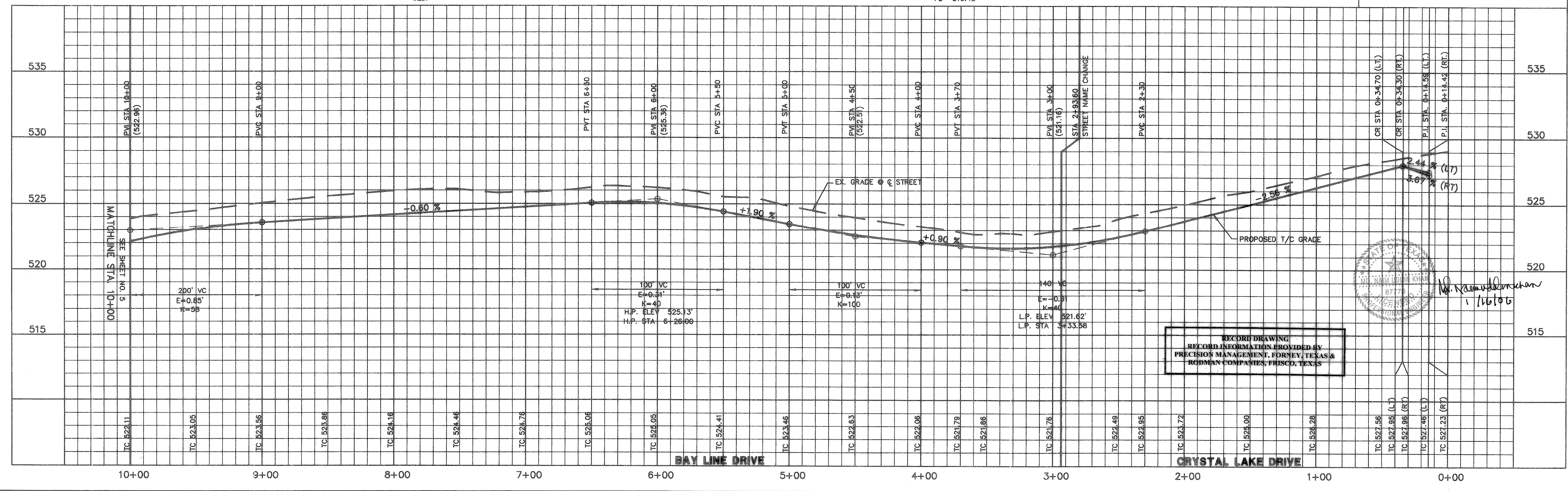
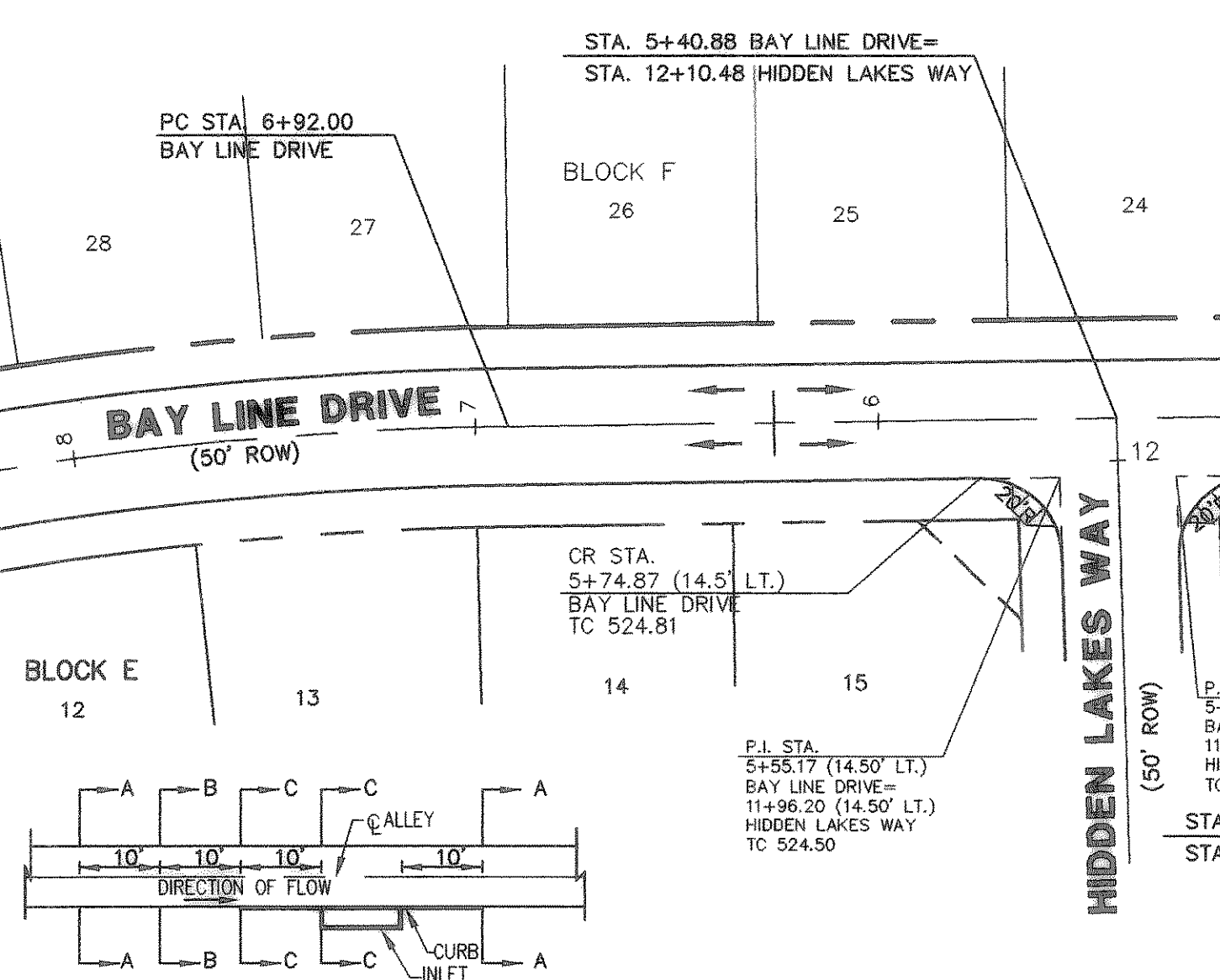
**CURVE REPORT**

CURVE	RADIUS	DELTA	TANGENT	LENGTH	CHORD	BEARING
C-2	36.00'	88°57'39"	35.35'	55.89'	50.45'	N43°38'28"E
C-6	34.50'	90°20'12"	34.70'	54.40'	48.93'	S43°59'33"W
C-7	900.00'	26°23'48"	211.06'	414.64'	410.98'	S75°57'45"W

- NOTE:**
- PAVEMENT FOR STREETS SHALL CONSIST OF 6" 3600 P.S.I. REINFORCED CONCRETE AND 6" LIME-STABILIZED SUBGRADE WITH 6" PARABOLIC CROWN.
  - PAVEMENT FOR ALLEYS SHALL CONSIST OF 4000 P.S.I. REINFORCED CONCRETE AND 6" LIME-STABILIZED SUBGRADE WITH 5" INVERT. TYPICAL ALLEY SECTION WILL BE 7'-5"-7".
  - CONTRACTOR TO RUN LIME SERIES BEFORE CONSTRUCTION.

**LEGEND**

TC	TOP OF CURB
TP	TOP OF PAVEMENT
CR	CURB RETURN
FL	FLOW LINE
2	STREET STATION
1	HANDICAP RAMP @ STREET & STREET INTERSECTION
1	HANDICAP RAMP @ STREET & ALLEY INTERSECTION
→	FLOW ARROWS



**PHASE 08**

Scale: 1" = 40' Date: 4/12/04

Designed By: RB  
 Drawn By: MS  
 Checked By: NK  
 Project No.: 14654.01

**REVISION**

NO.	DATE	REVISION

APPROVAL

THESE CONSTRUCTION PLANS WERE PREPARED BY MD. NAIM UDDIN KHAN, REGISTERED PROFESSIONAL ENGINEER NO. 87776

THE SEAL APPEARING ON THIS DOCUMENT WAS AUTHORIZED BY MD. NAIM UDDIN KHAN, # 87776

M.B. JONES SURVEY, ABSTRACT NO. 122  
 CITY OF ROCKWALL  
 ROCKWALL COUNTY, TEXAS

LUMBERMEN'S INVESTMENT CORPORATION  
 5495 BELLINE ROAD #225  
 DALLAS, TEXAS 75240

**PAVING PLAN & PROFILE (PHASE 08)**  
 CRYSTAL LAKE DRIVE STA 0+00 TO 2+93.60  
 BAY LINE DRIVE STA 2+93.60 TO 10+00  
 PAV. PLAN ALLEY "8" STA 4+00 TO 8+81.89  
 PAVING PLAN ALLEY "7" STA 4+00 TO 8+87.56

RECORD DRAWING  
 RECORD INFORMATION PROVIDED BY  
 PRECISION MANAGEMENT, FORTNEY, TEXAS &  
 RUDDMAN COMPANIES, FRISCO, TEXAS

