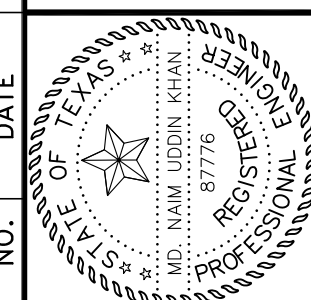


LEGEND

AREA DESIGNATION	PROPOSED STORM SEWER SYSTEM	INLET DESIGNATION
AREA IN ACRES	DRAINAGE AREA BOUNDARY	PROP. CONTOUR
FLOW ARROWS	OFF-SITE DRAINAGE TRIBUTARY (DEVELOPED)	EX. CONTOUR
PROPOSED INLETS		

NO.	DATE	REVISION	APPROV.
1	9/17/04	REVISED DRAINAGE AREA	N.K.

Winkelmann & Associates, Inc.
 CONSULTING CIVIL ENGINEERS & SURVEYORS
 6750 HILBERT PLAZA, SUITE 100
 DALLAS, TEXAS 75230
 (972) 440-7280
 (972) 440-7299 FAX



THESE CONSTRUCTION PLANS WERE PREPARED UNDER THE RESPONSIBLE SUPERVISION OF M.D. NAIM LUDDIN KHAN, REGISTERED PROFESSIONAL ENGINEER NO. 87776

M.B. JONES SURVEY, ABSTRACT NO. 122
 CITY OF ROCKWALL
 ROCKWALL COUNTY, TEXAS
 LUMBERMEN'S INVESTMENT CORPORATION
 5495 BELTLINE ROAD #225
 DALLAS, TEXAS 75240

THE SEAL APPEARING ON THIS DOCUMENT WAS AUTHORIZED BY M.D. NAIM LUDDIN KHAN, # 87776

**DRAINAGE AREA MAP
 PHASE 6**

Scale :	1"=100'	Date :	4/12/04
Designed By :	MS		
Drawn By :	MS		
Checked By :	INK		
File :	146546ndom.dwg	View :	
Project No. :	14654-01		

BENCHMARK: ELEV. = 600.69
 CITY OF ROCKWALL R-19
 BRASS MONUMENT AT THE N/W CORNER OF
 SILVERVIEW & DIAMOND WAY, 500' ± SOUTH OF
 S.H. 276.

BENCHMARK: ELEV. = 583.56
 R.F. SPIKE SET IN THE CENTERLINE OF S.H. 276
 3600± WEST OF F.M. 549

SHEET
 1
 OF
 57