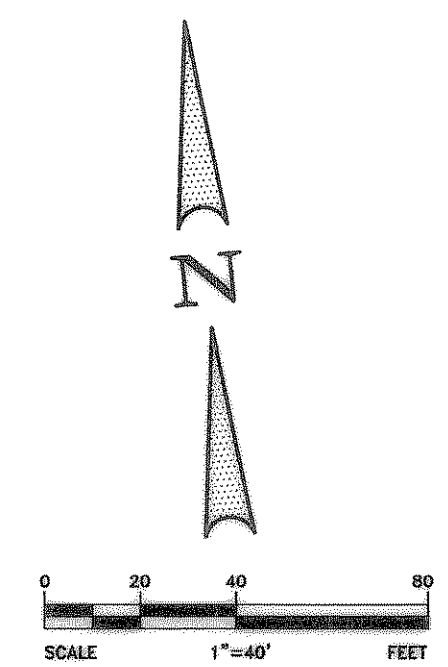
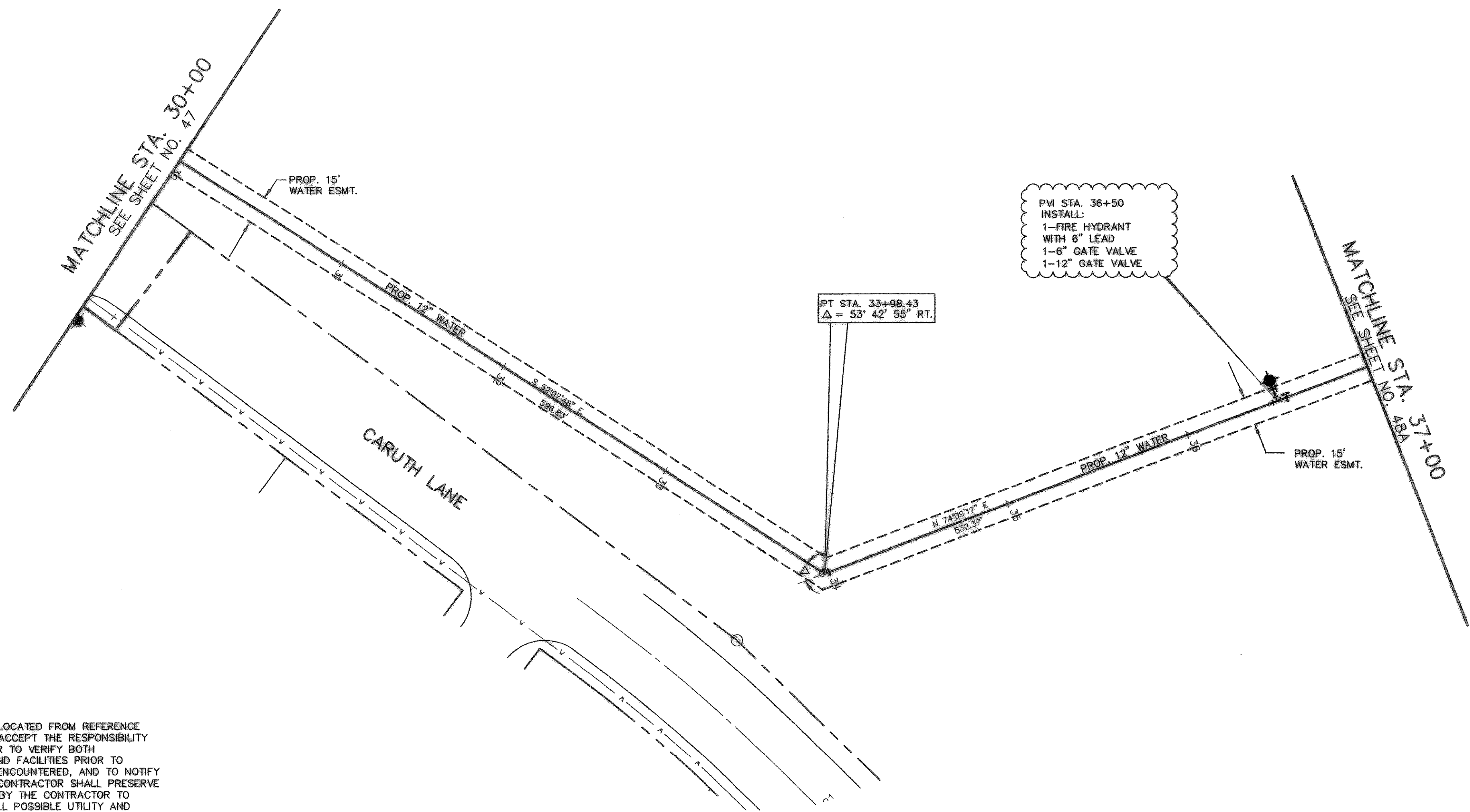


NOTE:
OFF-SITE 12" WATER LINE WILL BE
INSTALLED WITH PHASE 6A CONSTRUCTION

LEGEND	
MH	Manhole
FH	Fire Hydrant
SS	Sanitary Sewer
GAS	Gas Line
SSMH	Sanitary Sewer Manhole
RCP	Reinforced Concrete Pipe

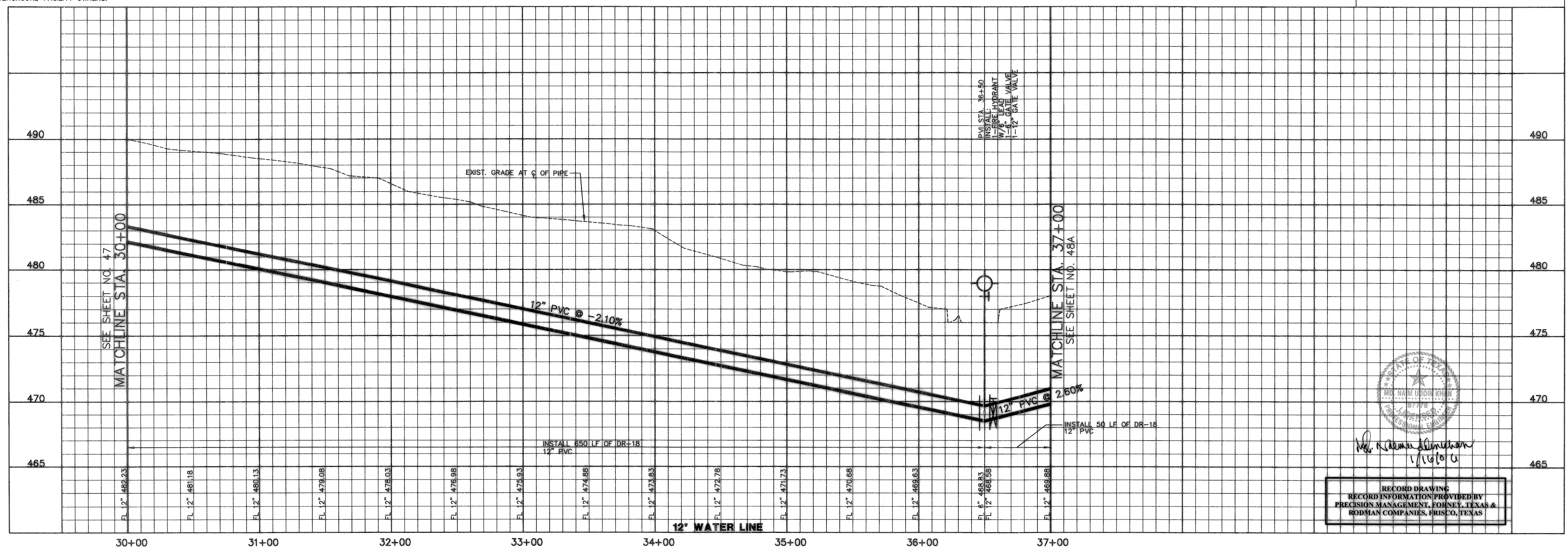


CAUTION !!!
UNDERGROUND UTILITIES

EXISTING UTILITIES AND UNDERGROUND FACILITIES INDICATED ON THESE PLANS HAVE BEEN LOCATED FROM REFERENCE INFORMATION SUPPLIED BY VARIOUS OWNERS OF THE FACILITIES. THE ENGINEER DOES NOT ACCEPT THE RESPONSIBILITY FOR THE UTILITY LOCATIONS SHOWN. IT SHALL BE THE RESPONSIBILITY OF THE CONTRACTOR TO VERIFY BOTH HORIZONTALLY AND VERTICALLY THE LOCATION OF ALL EXISTING UTILITIES AND UNDERGROUND FACILITIES PRIOR TO CONSTRUCTION, TO TAKE NECESSARY PRECAUTIONS IN ORDER TO PROTECT ALL FACILITIES ENCOUNTERED, AND TO NOTIFY THE ENGINEER PROMPTLY OF ALL CONFLICTS OF THE WORK WITH EXISTING FACILITIES. THE CONTRACTOR SHALL PRESERVE AND PROTECT ALL EXISTING UTILITIES FROM DAMAGE DURING CONSTRUCTION. ANY DAMAGE BY THE CONTRACTOR TO EXISTING UTILITIES SHALL BE REPAIRED BY THE CONTRACTOR AT HIS EXPENSE. CONTACT ALL POSSIBLE UTILITY AND UNDERGROUND FACILITY OWNERS.

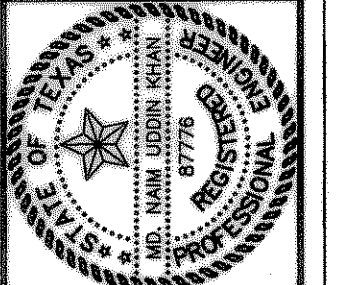
BENCHMARK:
"X" CHISELED IN C OF ALLEY EAST OF MORNINGSTAR DRIVE WITHIN 3RD LOT NORTH OF MIDNIGHT PASS. ELEV. 513.26

BENCHMARK:
PK NAIL IN C OF CARUTH LANE & ALLEY INTERSECTION 150'± EAST OF MORNINGSTAR DRIVE. ELEV. 491.68



RECORD DRAWING
RECORD INFORMATION PROVIDED BY
PRECISION MANAGEMENT, FORTNEY, TEXAS &
RODMAN COMPANIES, FRISCO, TEXAS

NO.	DATE	REVISION	APPROV.



Winkelmann & Associates, Inc.
CONSULTING CIVIL ENGINEERS & SURVEYORS
8750 ALLAMORE PARK DRIVE, SUITE 100
DALLAS, TEXAS 75248
(972) 465-7000 FAX

THESE CONSTRUCTION PLANS WERE PREPARED BY M.B. JONES, REGISTERED PROFESSIONAL ENGINEER NO. 87776.
M.B. Jones 8/14/04
M.B. JONES SURVEY, ABSTRACT NO. 122
CITY OF ROCKWALL
ROCKWALL COUNTY, TEXAS
LUMBERMEN'S INVESTMENT CORPORATION
5495 BELTLINE ROAD #225
DALLAS, TEXAS 75240

THE SEAL APPEARING ON THIS DOCUMENT WAS AUTHORIZED BY M.D. NAIM UDDIN KHAN, # 87776

12' OFF-SITE WATER PLAN & PROFILE

Scale: 1" = 40'
Date: 12/2/03
Designed By: MB
Drawn By: MB
Checked By: NK
File: 146546101W4.dwg/jew
Project No.: 14654.01

SHEET
48
OF
57