

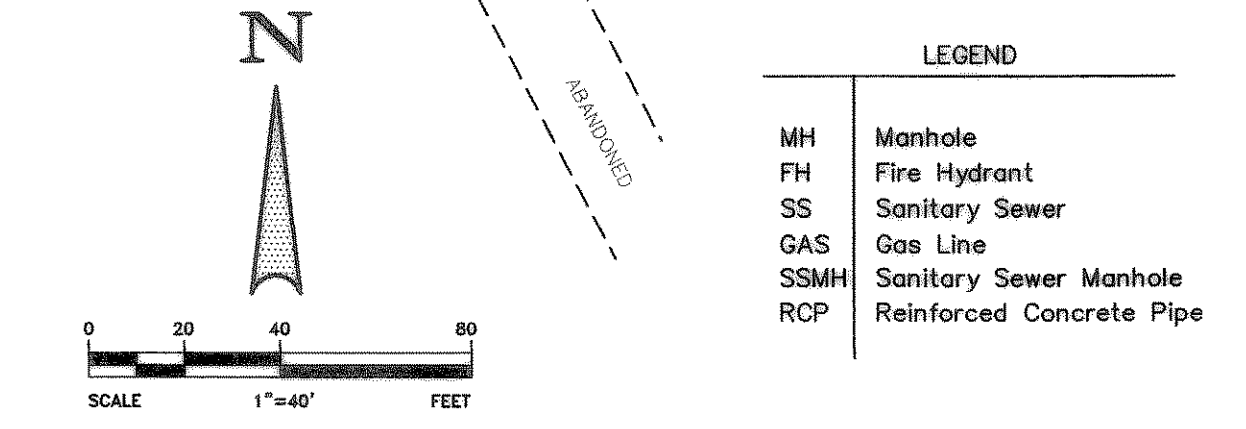
**BENCHMARK:**  
 "X" CHISELED IN C OF ALLEY EAST OF MORNINGSTAR DRIVE WITHIN 3RD LOT NORTH OF MIDNIGHT PASS. ELEV. 513.26

**BENCHMARK:**  
 PK NAIL IN C OF CARUTH LANE & ALLEY INTERSECTION 150'± EAST OF MORNINGSTAR DRIVE. ELEV. 491.68

**CAUTION !!!**  
**UNDERGROUND UTILITIES**

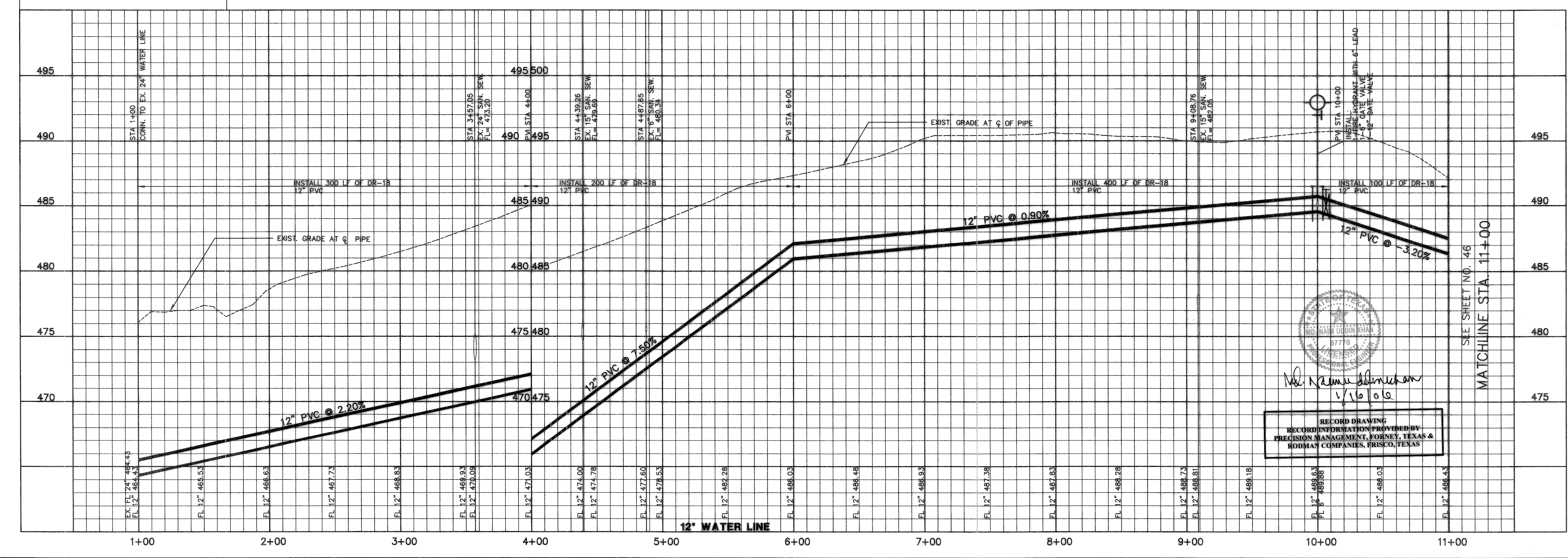
EXISTING UTILITIES AND UNDERGROUND FACILITIES INDICATED ON THESE PLANS HAVE BEEN LOCATED FROM REFERENCE INFORMATION SUPPLIED BY VARIOUS OWNERS OF THE FACILITIES. THE ENGINEER DOES NOT ACCEPT THE RESPONSIBILITY FOR THE UTILITY LOCATIONS SHOWN. IT SHALL BE THE RESPONSIBILITY OF THE CONTRACTOR TO VERIFY BOTH HORIZONTALLY AND VERTICALLY THE LOCATION OF ALL EXISTING UTILITIES AND UNDERGROUND FACILITIES PRIOR TO CONSTRUCTION, TO TAKE NECESSARY PRECAUTIONS IN ORDER TO PROTECT ALL FACILITIES ENCOUNTERED, AND TO NOTIFY THE ENGINEER PROMPTLY OF ALL CONFLICTS OF THE WORK WITH EXISTING FACILITIES. THE CONTRACTOR SHALL PRESERVE AND PROTECT ALL EXISTING UTILITIES FROM DAMAGE DURING CONSTRUCTION. ANY DAMAGE BY THE CONTRACTOR TO EXISTING UTILITIES SHALL BE REPAIRED BY THE CONTRACTOR AT HIS EXPENSE. CONTACT ALL POSSIBLE UTILITY AND UNDERGROUND FACILITY OWNERS.

**WARNING!!!**  
 EXIST. HIGH PRESSURE GAS LINE; CONTRACTOR TO VERIFY LOCATION AND DEPTH OF EXISTING UTILITIES PRIOR TO CONSTRUCTION.



**LEGEND**

MH	Manhole
FH	Fire Hydrant
SS	Sanitary Sewer
GAS	Gas Line
SSMH	Sanitary Sewer Manhole
RCP	Reinforced Concrete Pipe



RECORD DRAWING  
 RECORDING EXTENSION PROVIDED BY  
 PRECISION MANAGEMENT, FORTNEY, TEXAS &  
 RODMAN COMPANIES, FRISCO, TEXAS

*M. Namuddin Khan*  
 1/16/10

APPROV.	
REVISION	
DATE	
NO.	

THESE CONSTRUCTION PLANS WERE PREPARED BY ME OR UNDER MY CLOSE PERSONAL SUPERVISION AND TO THE BEST OF MY KNOWLEDGE AND BELIEF THEY COMPLY WITH ALL CITY, STATE AND FEDERAL REQUIREMENTS. I AM A LICENSED PROFESSIONAL ENGINEER IN THE STATE OF TEXAS.

*M. Namuddin Khan* 8/10/10  
 ENGINEER NO. 87776

M.B. JONES SURVEY, ABSTRACT NO. 122  
 CITY OF ROCKWALL  
 ROCKWALL COUNTY, TEXAS

LUMBERMEN'S INVESTMENT CORPORATION  
 5495 BELTLINE ROAD #225  
 DALLAS, TEXAS 75240

THE SEAL APPEARING ON THIS DOCUMENT WAS AUTHORIZED BY MD. NAM UDDIN KHAN, # 87776

**12" OFF-SITE WATER PLAN & PROFILE**

Scale : 1"=40' Date : 12/22/03  
 Designed By : MB  
 Drawn By : MB  
 Checked By : NK  
 File : 14654601offsite.dwg View :  
 Project No. : 14654.01

**SHEET**  
 45  
 OF  
 57

**Winkelmann & Associates, Inc.**  
 CONSULTING CIVIL ENGINEERS & SURVEYORS  
 6700 BELLEVIEW PLAZA, SUITE 100  
 DALLAS, TEXAS 75248  
 (972) 442-7800  
 (972) 442-7800 FAX

REGISTERED PROFESSIONAL ENGINEER  
 STATE OF TEXAS  
 NO. 87776