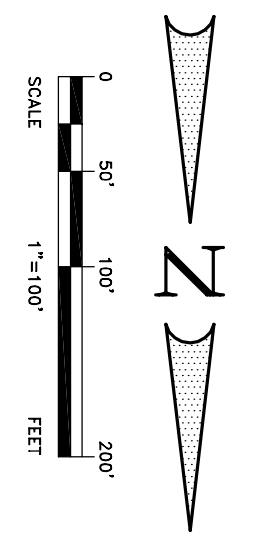


**LEGEND**

	AREA DESIGNATION
	AREA IN ACRES
	FLOW ARROWS
	PROPOSED INLETS
	PROPOSED STORM SEWER SYSTEM
	BOUNDARY
	DRAINAGE AREA
	OFF-SITE DRAINAGE TRIBUTARY (DEVELOPED)
	INLET DESIGNATION
	PROP. CONTOUR
	EX. CONTOUR



**BENCHMARK:** ELEV. = 600.69  
 CITY OF ROCKWALL R-19  
 BRASS MONUMENT AT THE N/W CORNER OF  
 SILVERVIEW & DIAMOND VAY. 500' ± SOUTH OF  
 S.H. 276.

**BENCHMARK:** ELEV. = 583.56  
 R.R. SPIKE SET IN THE CENTERLINE OF S.H. 276  
 3800' WEST OF F.M. 549

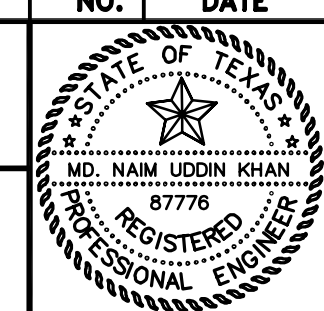
Scale : 1"=100' Date : 4/12/04  
 Designed By : MS  
 Drawn By : MS  
 Checked By : NK  
 File : 146546ndam.dwg View :  
 Project No. : 14654.01

**DRAINAGE AREA MAP  
 PHASE 6**

THE SEAL APPEARING ON THIS DOCUMENT WAS AUTHORIZED BY MD. NAIM UDDIN KHAN, # 87776

M.B. JONES SURVEY, ABSTRACT NO. 122  
 CITY OF ROCKWALL, TEXAS  
 LUMBERMEN'S INVESTMENT CORPORATION  
 5495 BELTLINE ROAD #225  
 DALLAS, TEXAS 75240

NO.	DATE	REVISION	APPROV.
9/10/04		REVISED DRAINAGE AREA	N.K.



**Winkelmann & Associates, Inc.**  
 CONSULTING CIVIL ENGINEERS ■ SURVEYORS  
 6750 HILLCREST PLAZA DRIVE, SUITE 100 DALLAS, TEXAS 75230  
 (972) 490-7090 (972) 490-7099 FAX