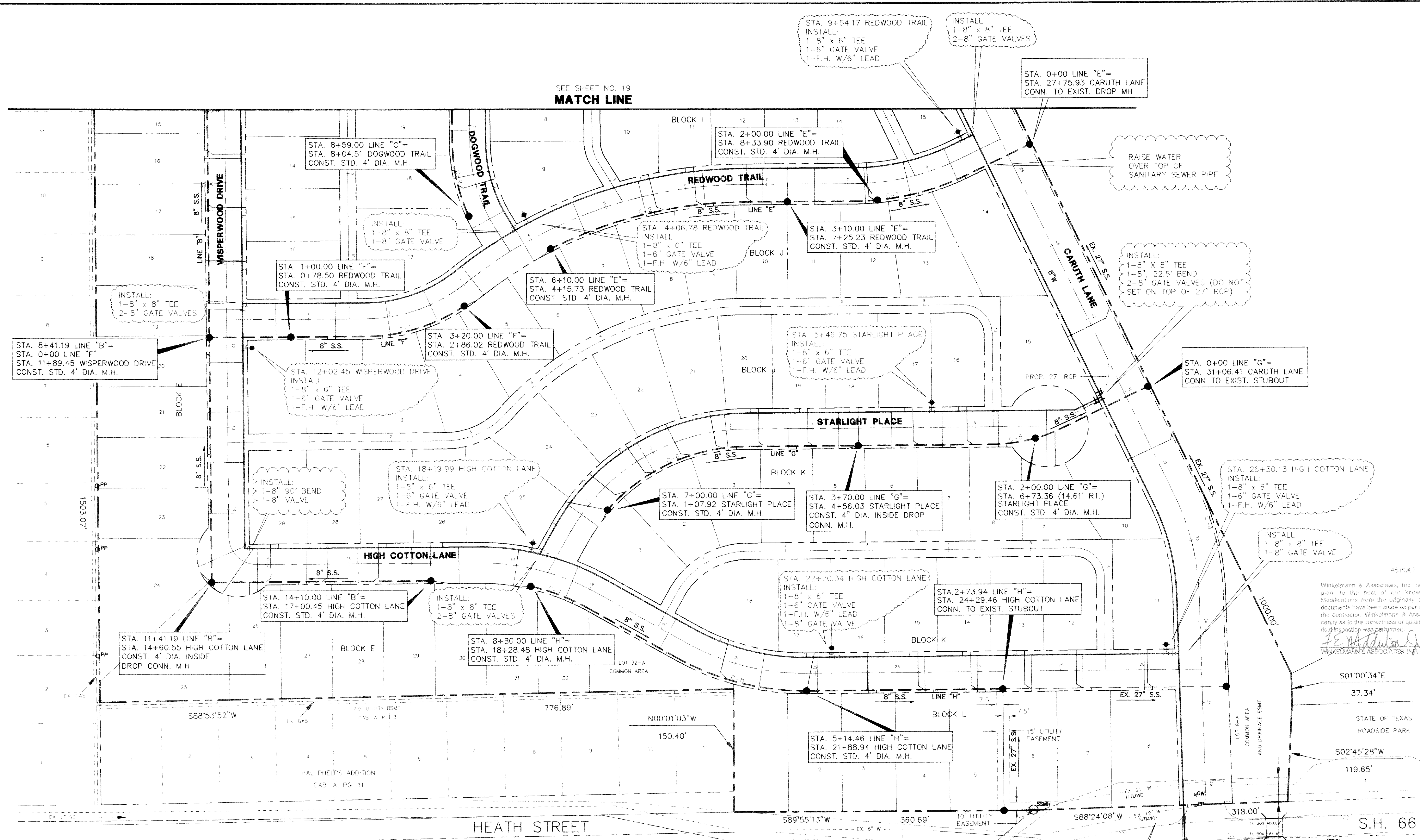


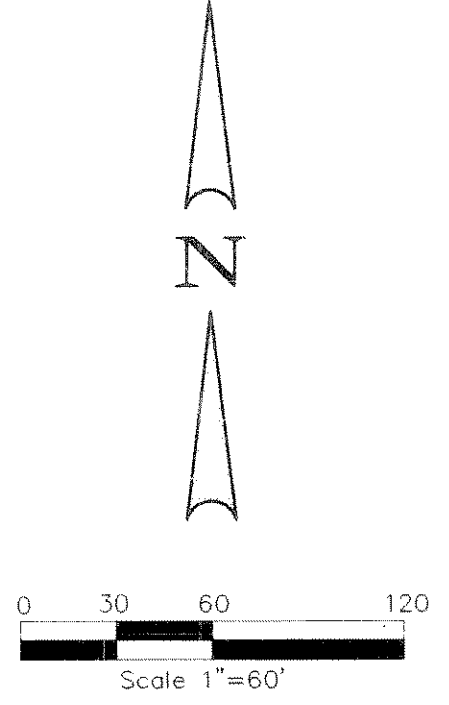
SEE SHEET NO. 19
MATCH LINE



SANITARY SEWER CURVE DATA

CURVING	RADIUS	DELTA	TANGENT	LENGTH	CHORD	BEARING
C-1	225.50	311°52'26"	66.45	126.57	126.57	S73°03'04"W
C-2	526.50	26°32'36"	125.23	245.70	245.70	N76°20'59"E
C-3	321.50	25°28'48"	72.69	142.97	142.97	S76°26'24"W
C-4	329.50	247°08'	69.65	138.15	138.15	S13°41'56"E
C-5	200.00	26°29'48"	45.27	88.94	88.94	S76°26'24"W
C-6	228.50	44°15'13"	102.35	192.48	192.48	N65°33'01"E
C-7	278.50	16°32'56"	39.39	78.25	78.25	S68°43'35"E
C-8	321.50	29°38'35"	65.07	166.35	166.35	N75°29'55"W
C-9	221.50	247°10'01"	47.66	93.89	93.89	N12°27'47"W

NOTE:
1. WATER LINE LOCATED 5' BACK OF CURB.
2. SANITARY SEWER LOCATED 7' BACK OF CURB.



NOTE:
THE CONTRACTOR SHALL CONTACT MR. JOE STANKIEWICZ, ENGINEERING OFFICER, AT (214) 442-5405 AT LEAST 48 HOURS PRIOR TO PERFORMING ANY WORK IN THE VICINITY OF NORTH TEXAS MUNICIPAL WATER DISTRICT FACILITIES.

CONNECT TO EXIST. 6" WATER
INSTALL:
1-6" x 6" TAPPING VALVE & SLEEVE
1-8" x 6" REDUCER
APPROX. 30' L.F. OF 12" STEEL ENCASEMENT PIPE BY BORE

Winkelmann & Associates, Inc. hereby states that this plan, to the best of our knowledge is "As Built". Modifications from the originally approved construction documents have been made as per information provided by the contractor. Winkelmann & Associates, Inc. does not certify as to the correctness or quality of construction as no field inspection was performed.
J.E. Addelman
WINKELMANN & ASSOCIATES, INC. DATE 10-14-99

APPROV.	
REVISION	
DATE	
NO.	

Winkelmann & Associates, Inc.
CONSULTING CIVIL ENGINEERS • SURVEYORS
1505 VALLEY VIEW, SUITE 200
DALLAS, TEXAS 75246
(972) 492-7899 FAX

CARUTH LANE PHASE FIVE
M.B. JONES SURVEY ABSTRACT NO. 122
CITY OF ROCKWALL
ROCKWALL COUNTY, TEXAS

LUMBERMEN'S INVESTMENT CORPORATION
5995 BELLEVUE BOULEVARD, SUITE 225
DALLAS, TEXAS 75246

WATER AND SANITARY SEWER PLAN

Scale: 1"=60' Date: 5/25/98
Designed By: R.B./N.K.
Drawn By: R.B.
Checked By: K.G.
File: 14633W54.DWG
Project No.: 14633.01

c:\RUSSELL\14633w54 Thu Jun 11 14:49:32 1998 RB